

Supplemental Table 1. Rodent diet composition

	dN		dPD	
%	gm	kcal	gm	kcal
Protein	20	20.5	2	2
Carbohydrate	66.3	68	84	86
Fat	5	11.5	5	12
Total		100		100
kcal/gm	3.9		3.9	
Ingredient	gm	kcal	gm	kcal
Egg Whites, Spray Dried	200	800	20	80
Corn Starch	150	600	330	1320
Sucrose	502.5	2010.2	502.5	2010
Cellulose, BW200	50	0	50	0
Corn Oil	50	450	50	450
Mineral Mix S19401	35	0	35	0
Vitamin Mix V10001	10	40	10	40
Choline Bitartrate	2	0	2	0
Biotin, 1%	0.4	0	0.4	0
Zinc Carbonate, 52.1% Zinc	0.056	0	0.056	0
Total	1000	3900	1000	3900

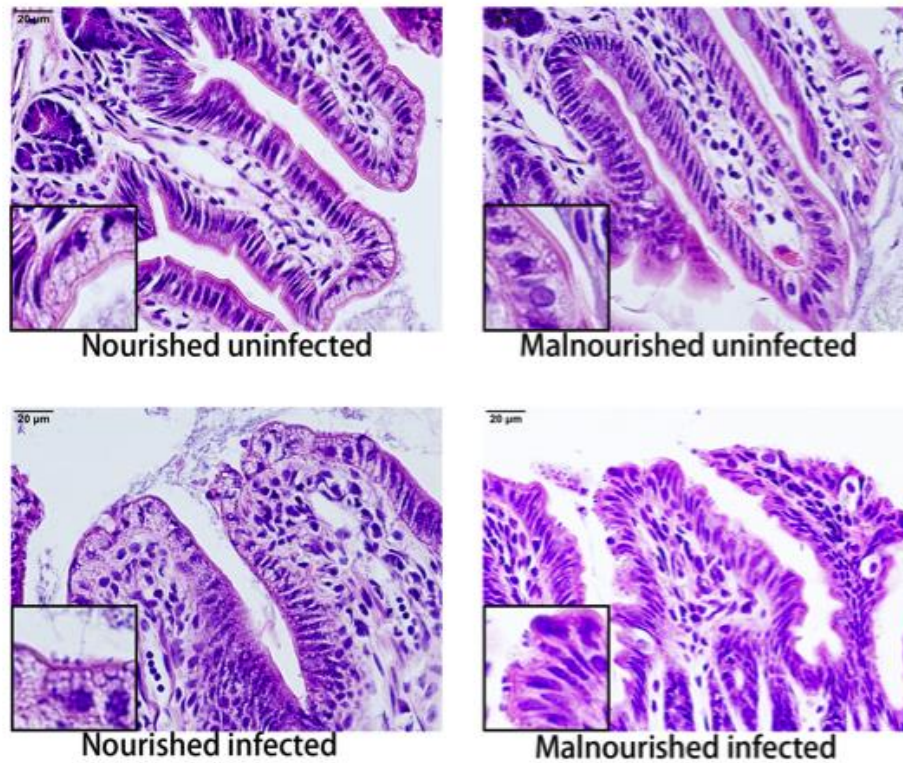


FIG S1 Ileal histology in nourished and malnourished uninfected and infected mice at 72 hours after challenge. Images in left-lower corner of each picture represented high-power magnification of a selected villus, showing cryptosporidial parasites at the enterocyte apical surface of infected mice, H&E $\times 400$.

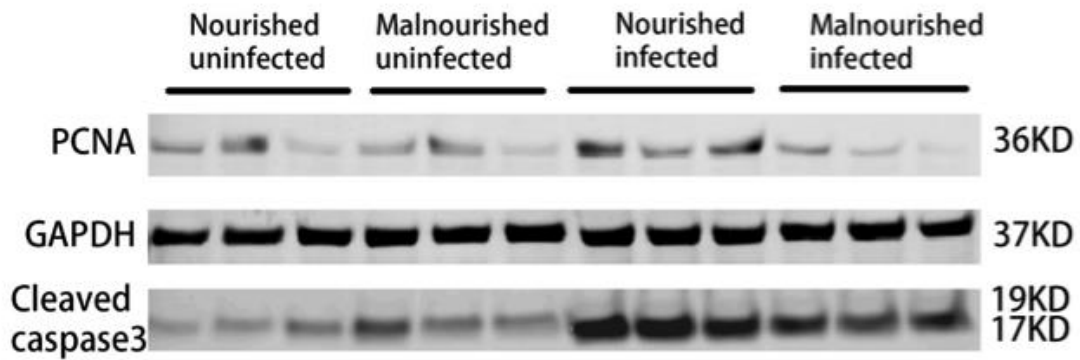


FIG S2 Protein malnutrition suppressed the expression of cleaved caspase 3 and PCNA induced by *C. parvum* at 72 hours after challenge. C57BL/6 mice at postnatal day 28 were fed with an isocaloric low-protein (2% protein) diet or the regular diet containing 20% protein and simultaneously challenged with 2×10^7 unexcysted oocysts per mouse, then euthanized 72 hours later. Equal amount of total proteins from ileal epithelial cells were Western blotted against Cleaved caspase 3, PCNA and GAPDH antibodies.