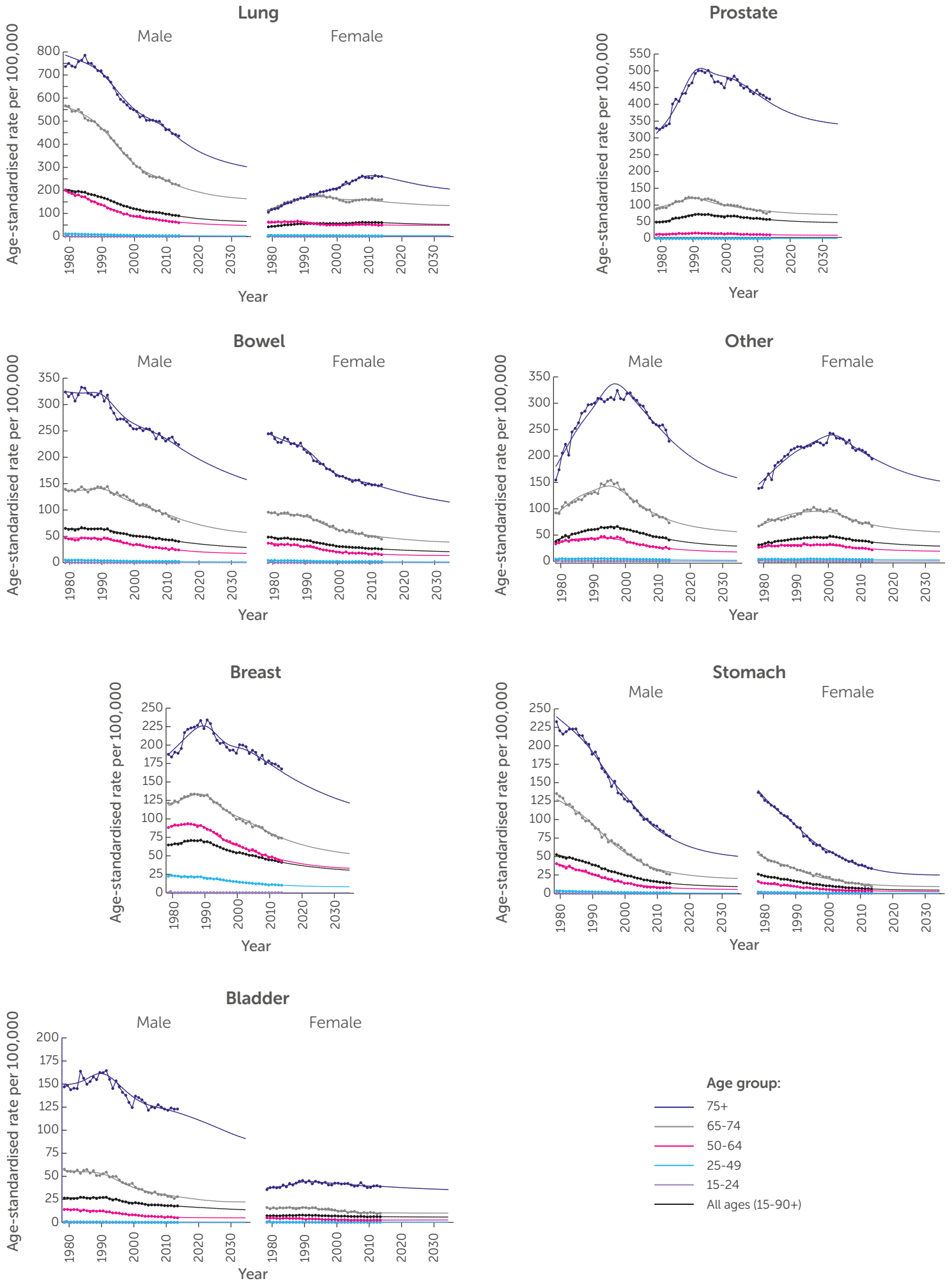
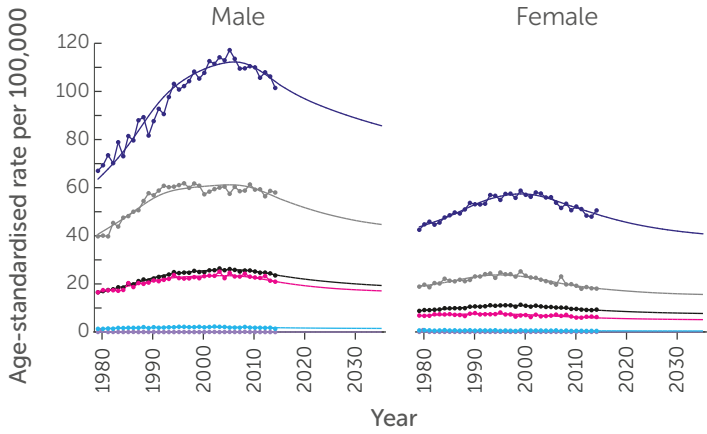


**Observed and projected mortality age standardised rates (ASRs) per 100,000 15-90+ year olds, for each cancer site by age group and sex**

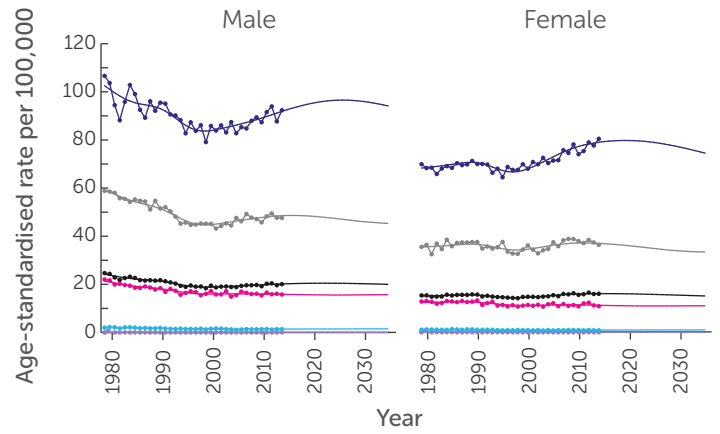


**Observed and projected mortality age standardised rates (ASRs) per 100,000 15-90+ year olds, for each cancer site by age group and sex**

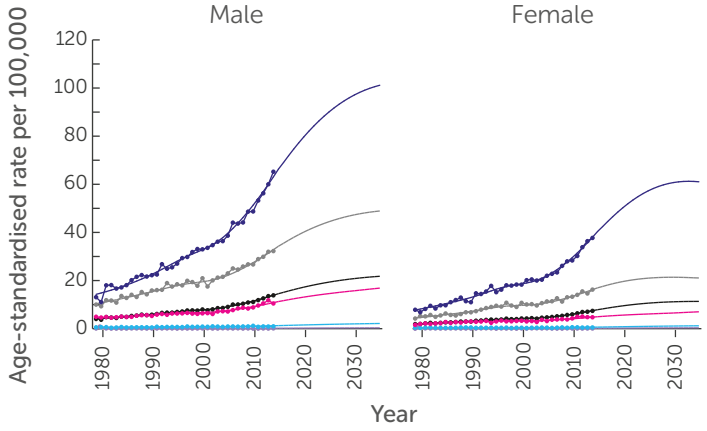
**Oesophagus**



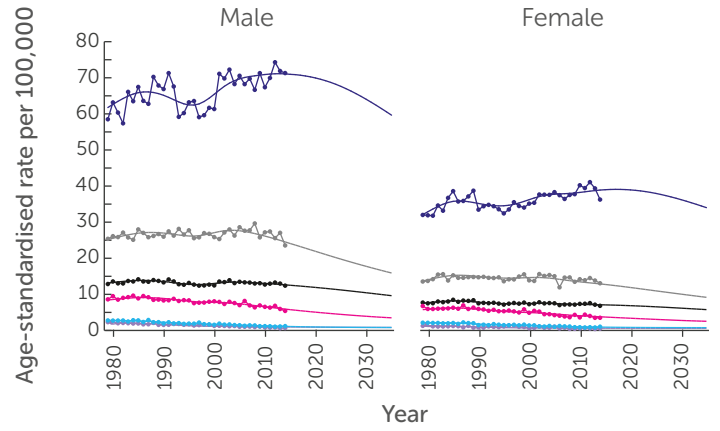
**Pancreas**



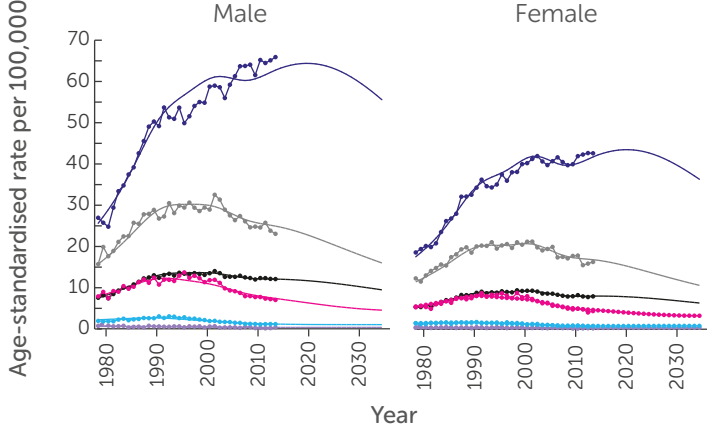
**Liver**



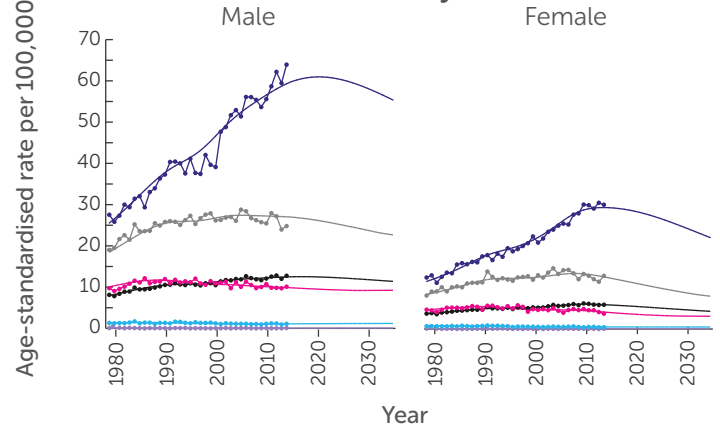
**Leukaemia**



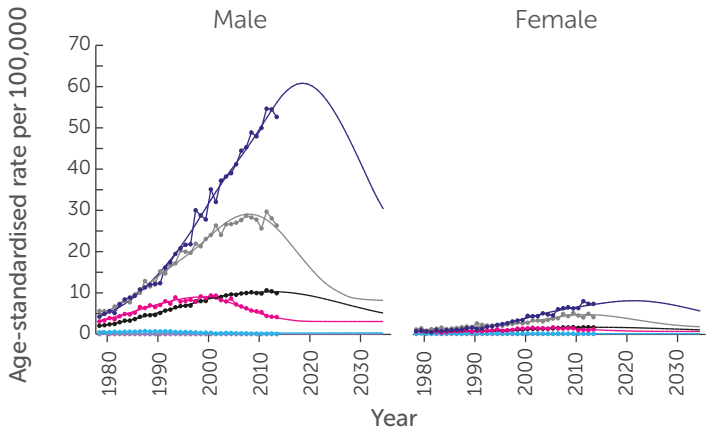
**Non-Hodgkin Lymphoma**



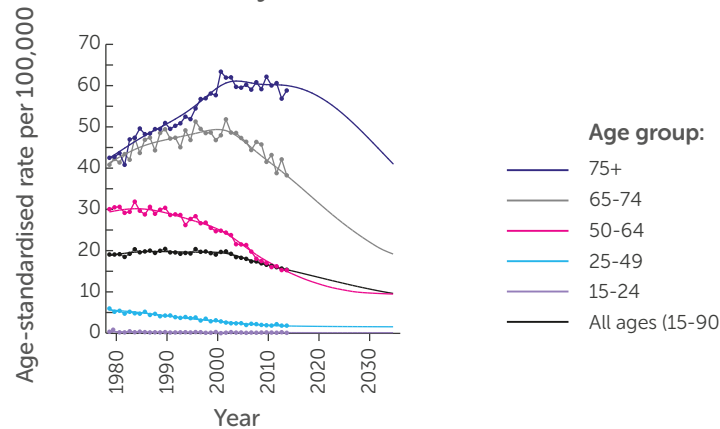
**Kidney**



**Mesothelioma**



**Ovary**

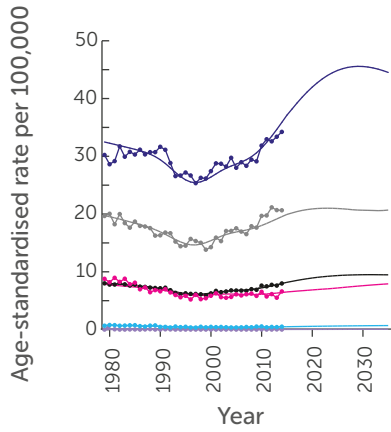


**Age group:**

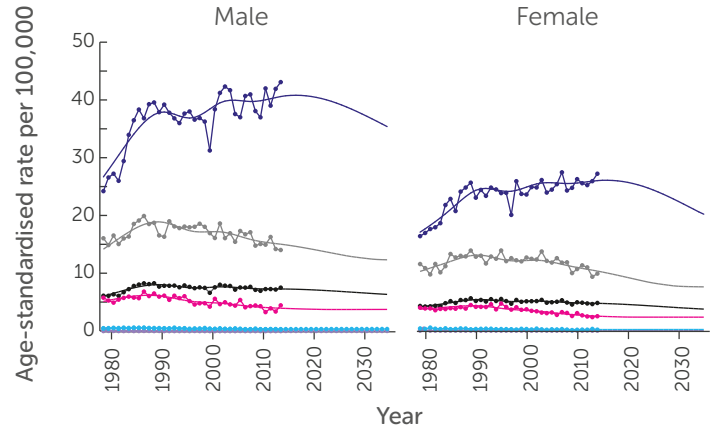
- 75+
- 65-74
- 50-64
- 25-49
- 15-24
- All ages (15-90+)

Observed and projected mortality age standardised rates (ASRs) per 100,000 15-90+ year olds, for each cancer site by age group and sex

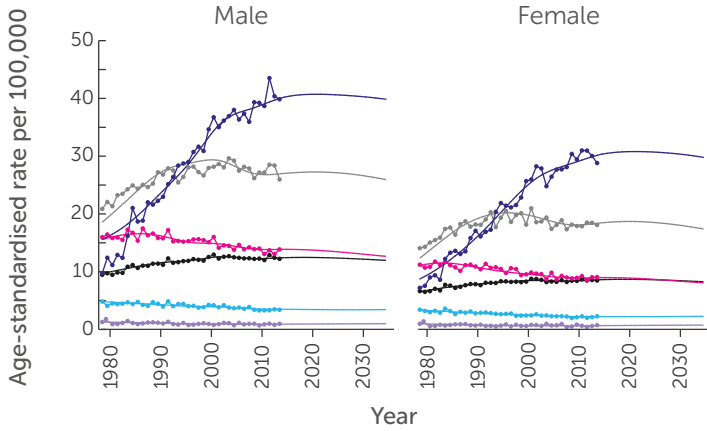
Uterus



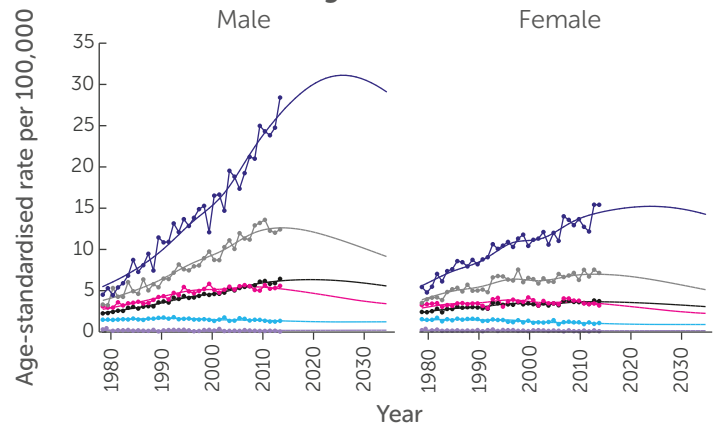
Myeloma



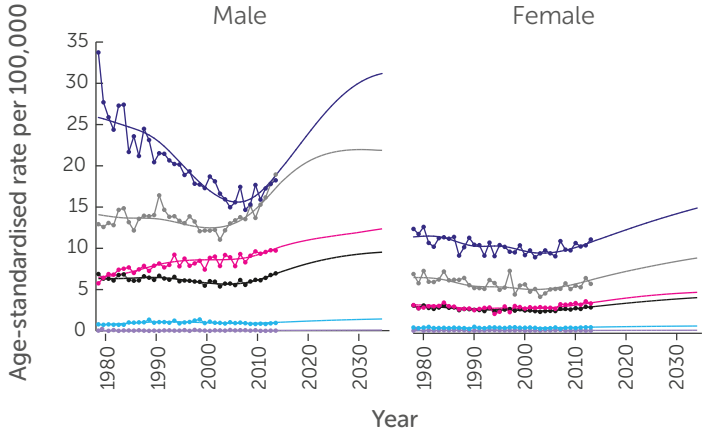
Brain



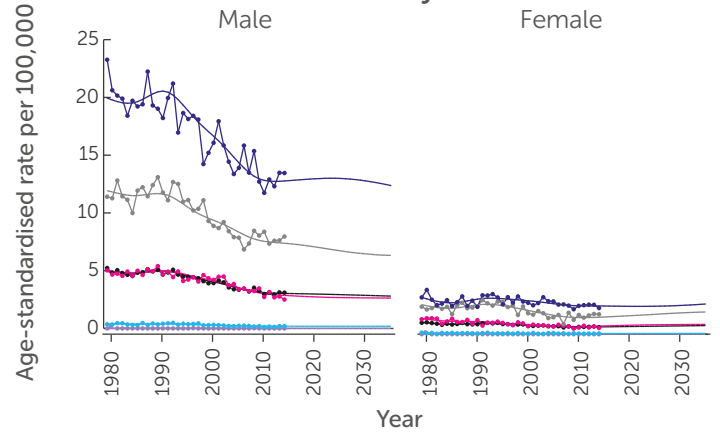
Malignant Melanoma



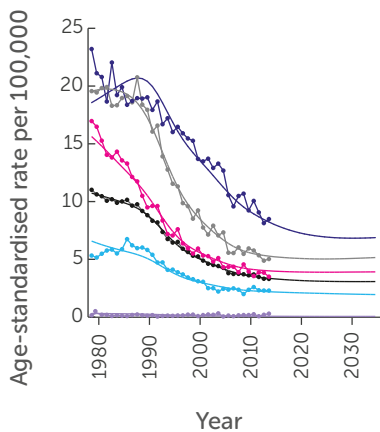
Oral



Larynx



Cervix



Age group:

- 75+
- 65-74
- 50-64
- 25-49
- 15-24
- All ages (15-90+)

**Observed and projected mortality age standardised rates (ASRs) per 100,000 15-90+ year olds, for each cancer site by age group and sex**

