

SUPPLEMENT

Supplemental Table 1: Associations of different SD quartiles and various outcomes in multivariable model adjusted for Model 5 variables and adherence to antihypertensive medications in a subgroup of individuals prescribed antihypertensive drugs.

SD	Adjusted hazard ratio (95% confidence interval)			
Quartiles	All-cause mortality	Incident CHD	Incident stroke	Incident ESRD
1	1	1	1	1
2	0.97 (0.94-1.00)	1.83 (1.66-2.01)	1.77 (1.58-1.98)	0.87 (0.59-1.27)
3	1.13 (1.10-1.17)	2.86 (2.61-3.13)	2.95 (2.66-3.28)	1.42 (1.01-2.00)
4	1.63 (1.58-1.68)	4.76 (4.36-5.20)	5.48 (4.94-6.08)	5.77 (4.20-7.94)

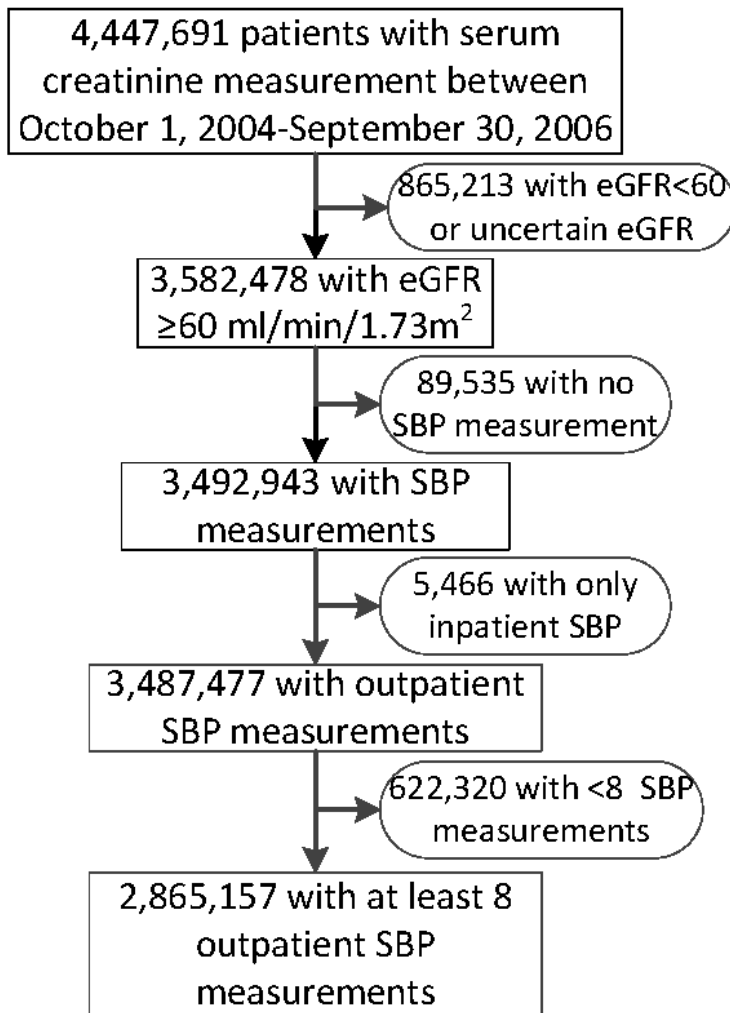
Footnotes: SD, standard deviation; CHD, coronary heart disease; ESRD, end-stage renal disease.

Supplemental Table 2: Associations of different SD quartiles of SBP limited to the initial 12-month period and various outcomes in multivariable model adjusted for Model 5 variables.

SD Quartiles	Adjusted hazard ratio (95% confidence interval)			
	All-cause mortality	Incident CHD	Incident stroke	Incident ESRD
1	1	1	1	1
2	1.08 (1.07-1.10)	1.05 (1.02-1.08)	1.10 (1.06-1.13)	1.18 (1.06-1.32)
3	1.25 (1.24-1.27)	1.16 (1.13-1.20)	1.26 (1.23-1.30)	1.44 (1.29-1.60)
4	1.47 (1.46-1.49)	1.35 (1.31-1.39)	1.59 (1.54-1.64)	2.10 (1.90-2.33)

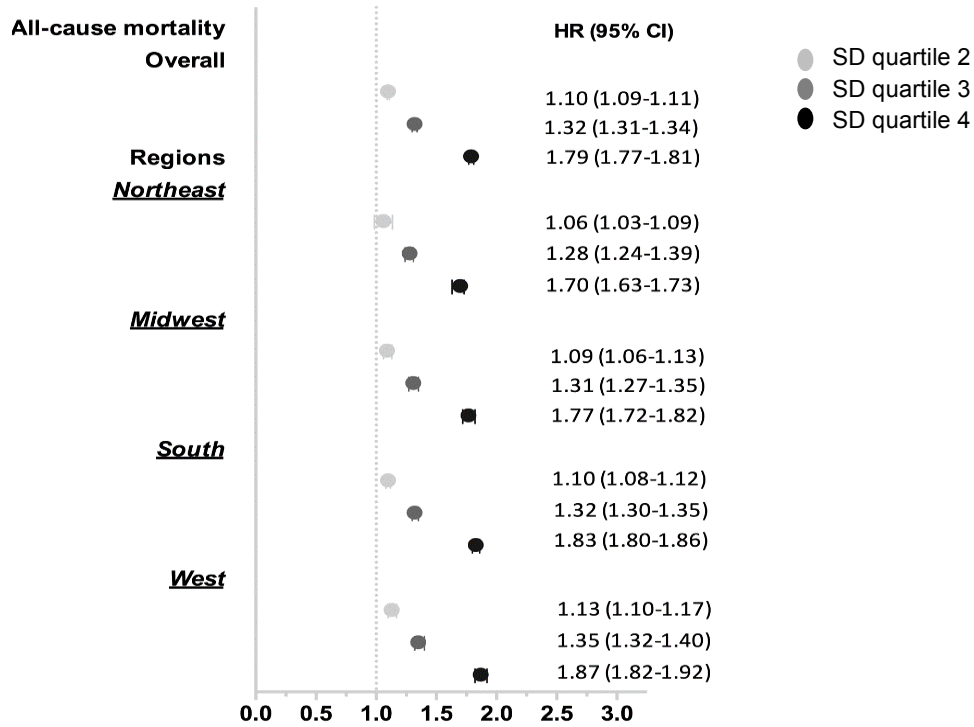
Footnotes: SD, standard deviation; CHD, coronary heart disease; ESRD, end-stage renal disease.

Supplemental Figure 1: Cohort selection flow chart

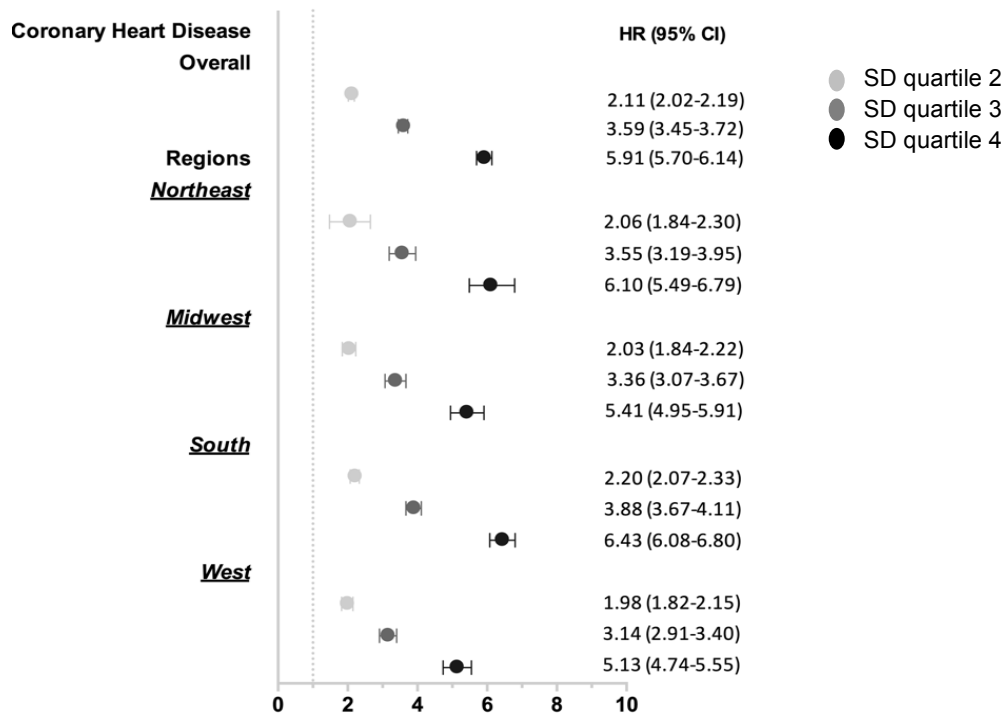


Supplemental Figure 2: Subgroup Analysis of Adjusted Hazard Ratios and 95% confidence intervals of outcomes of interest associated with different SD quartiles of mean blood pressure in different geographic regions

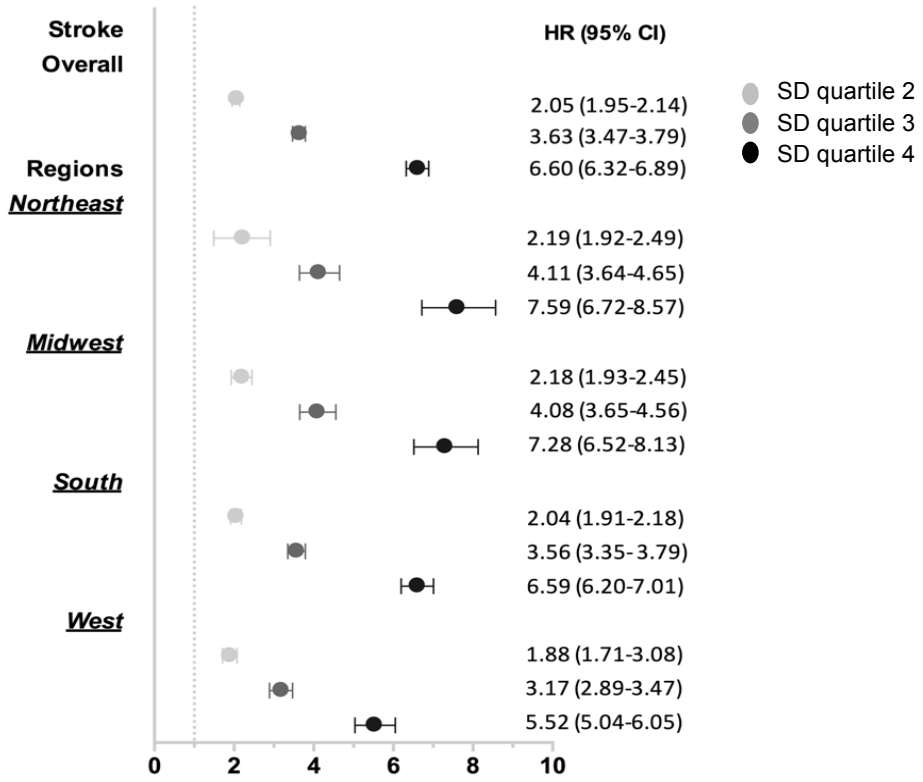
A.



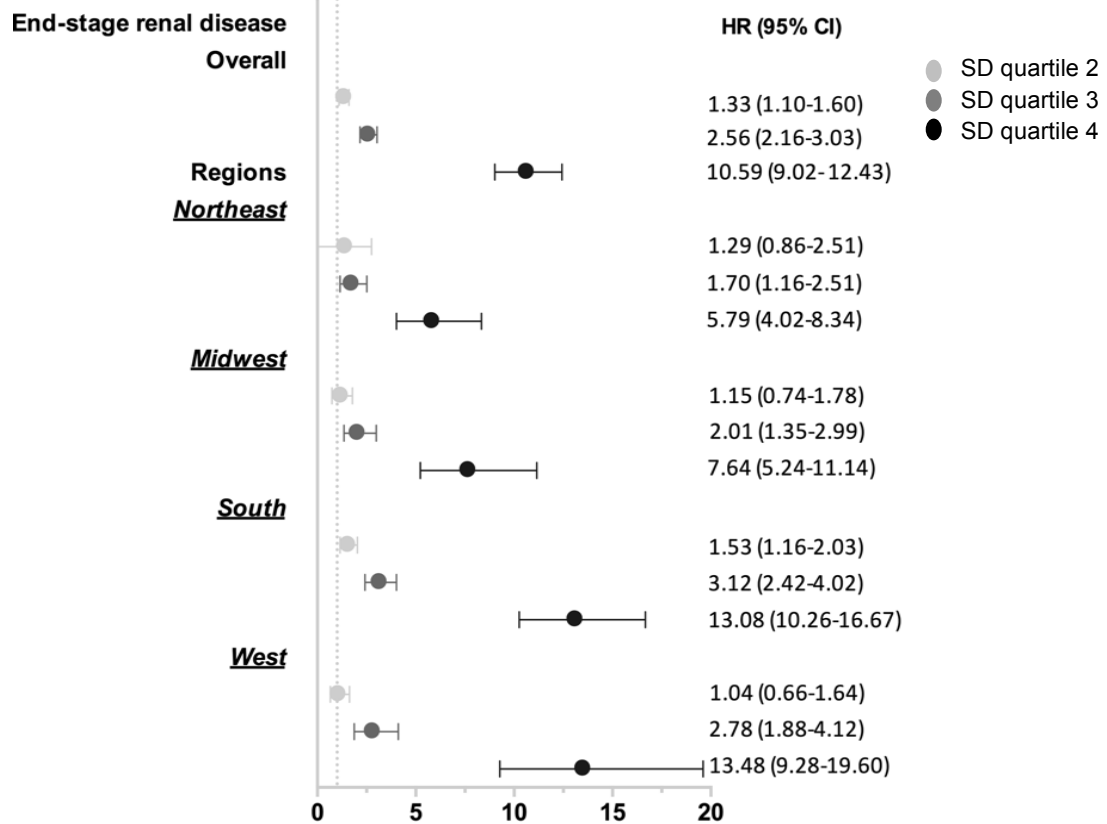
B.



C.



D.



Footnotes: SD quartile 1 served as a reference group. HR, hazard ratio; 95% CI- 95% Confidence Interval. A. Adjusted Hazard ratios and 95% confidence intervals of all-cause mortality associated with different SD quartiles of mean blood pressure in various geographic regions. B. Adjusted Hazard ratios and 95% confidence intervals of incident coronary artery disease associated with different SD quartiles of mean blood pressure in various geographic regions. C. Adjusted Hazard ratios and 95% confidence intervals of incident stroke associated with different SD quartiles of mean blood pressure in various geographic regions. D. Adjusted Hazard ratios and 95% confidence intervals of incident end-stage renal disease associated with different SD quartiles of mean blood pressure in various geographic region.