

Table S.1- List of PCR primers used in the study

Gene / protein name		
<i>Slc7a11</i> / xCT	Forward	5'-GAGCATCACCATCGTCAGA-3'
	Reverse	5'-CAGGTTATTCTACGTCGCATCT-3'
<i>Gclc</i> / GCLc	Forward	5'-ACATCGCCTCCATTGAGTAAC-3'
	Reverse	5'-ACATCTACCACGCAGTCAAG-3'
<i>Gss</i> / GSS	Forward	5'-TTCCTTCTCTTGAGCAATCAGT-3'
	Reverse	5'-TCCAAGATCCTGTCCAATAACC-3'
<i>Ggt1</i> / γ -GT	Forward	5'-AGAACTCAGAGCTCATGTTGC-3'
	Reverse	5'-CTGACGTATACCGTATCGTG-3'
<i>Nfe212</i> / Nrf2	Forward	5'-TCAAACACTTCTCGACTTACTCC-3'
	Reverse	5'-TGATGGACTTGGAGTTGCC-3'
<i>Gsr</i> / GR	Forward	5'-AGCATCTCATCACAGCCAARC-3'
	Reverse	5'-TCTACTCGACTGCCTTTACCC-3'
<i>Gxp2</i> / GPx-2	Forward	5'-GAAGATGCCATCATTCTGTGAA-3'
	Reverse	5'-AATATCCGTCCCCTTGCCTTC-3'
<i>Gstm1</i> / GSTM1	Forward	5'-AGGTGTTGCGATGTAGCG-3'
	Reverse	5'-CCTGCTTATGACATTCTTGACC-3'
<i>Gstp1</i> / GSTP1	Forward	5'-TGTAATCGGCAAAGGAGATCTG-3'
	Reverse	5'-TCACCCTCATCTACACCAACT-3'
<i>Gapdh</i> / GAPDH	Forward	5'-TGTGATGGGTGTGAACCACGAGAA-3'
	Reverse	5'-GAGCCCTTCCACAATGCCAAAGTT-3'
<i>Hprt1</i> / HPRT1	Forward	5'-TGGGCTTACCTCACTGCTTT-3'
	Reverse	5'-CTAATCACGACGCTGGGACT-3'
<i>Rplp0</i> / RPLP0	Forward	5'-TCCAGGCTTTGGGCATCA-3'
	Reverse	5'-CTTTATCAGCTGCACATCACTCAGA-3'
<i>Rn18s</i>	Forward	5'-GCAATTATTCCCCATGAACG-3'
	Reverse	5'-GGCCTCACTAAACCATCCAA-3'

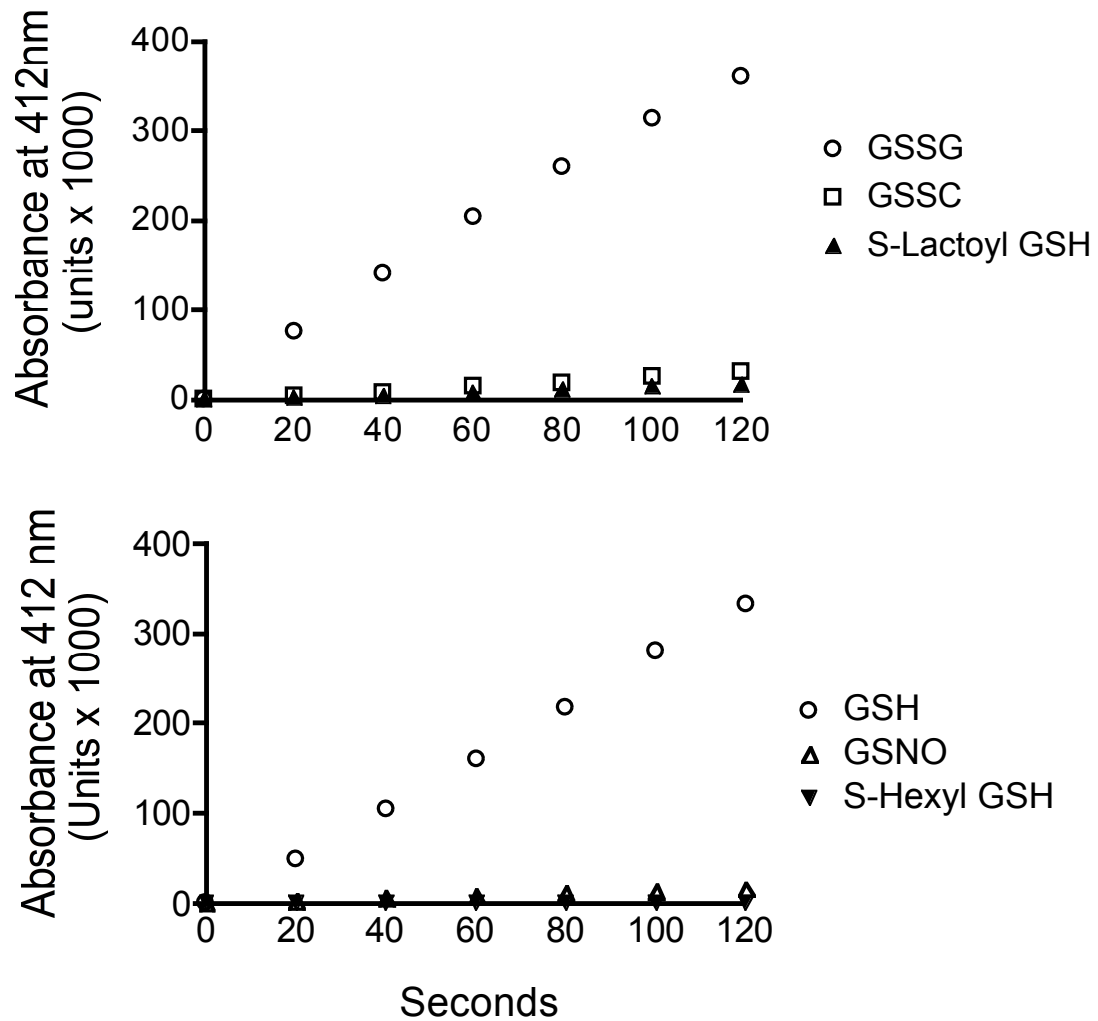


Fig. S1 – Among several glutathione-containing compounds only GSH and GSSG are measured with the enzymatic recycling method. The various GSH derivatives were incubated in the presence of GR, DTNB and NADPH as described in “Materials and Methods” and the appearance of the yellow trinitrobenzoate anion was determined spectrophotometrically at 412nm. The concentration of the GSH derivatives was 10 μ M except for that of GSSG, which was 5 μ M.

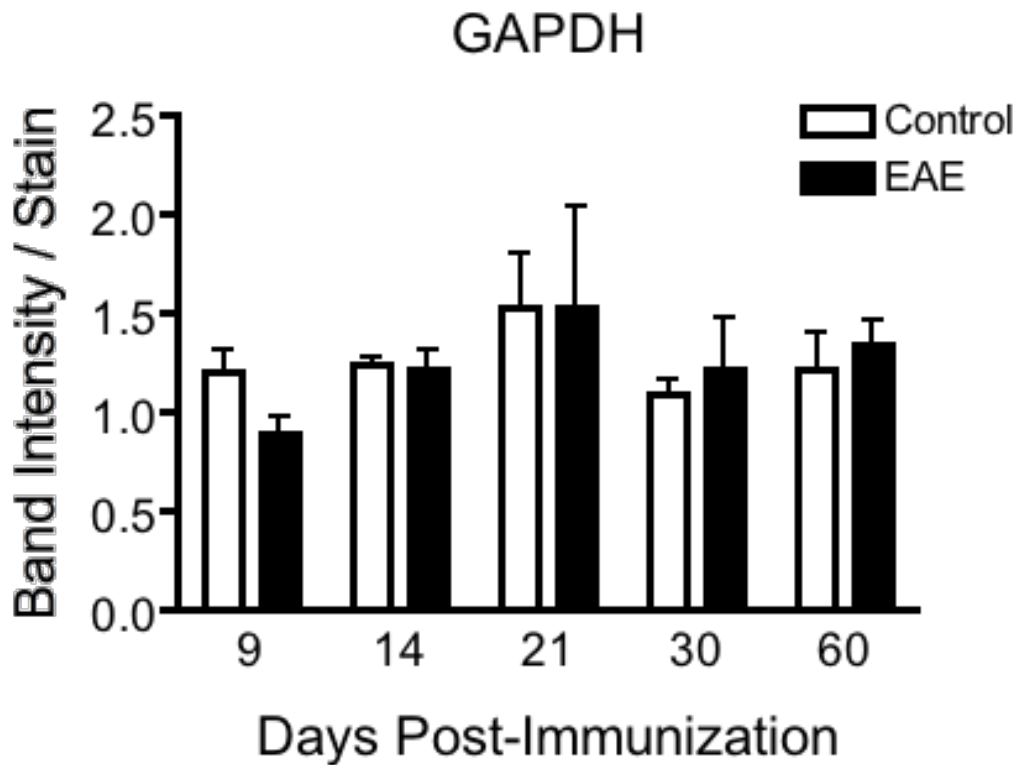


Figure S2. Relative levels of GAPDH in the spinal cord of control and EAE mice. GAPDH band intensity on the western blots was corrected by the Commassie brilliant blue intensity in the same lane. Values represent the mean \pm SEM of 3-4 animals per experimental group.

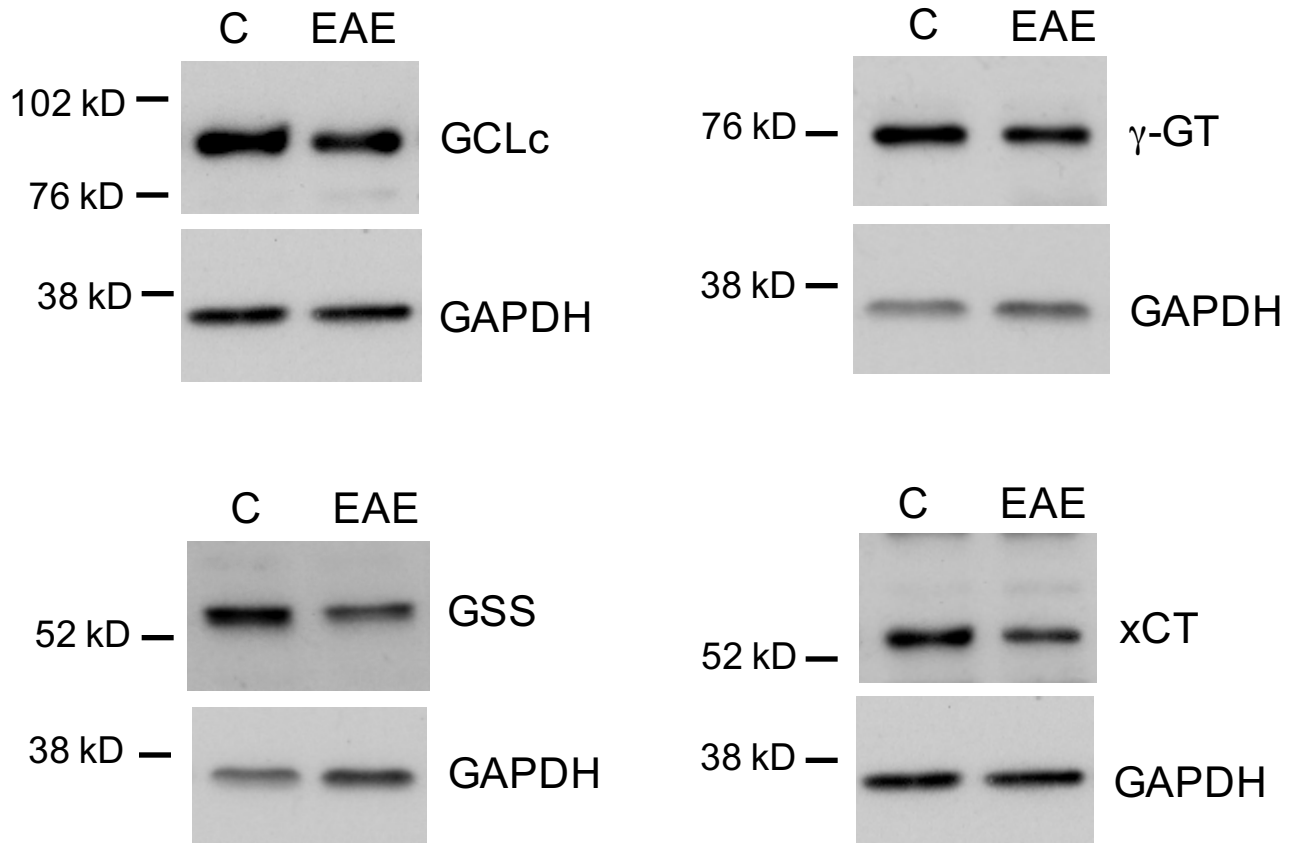


Fig. S3 - Representative western blots of the four enzymes involved in GSH synthesis in the spinal cord of control and EAE mice at 21 dpi.

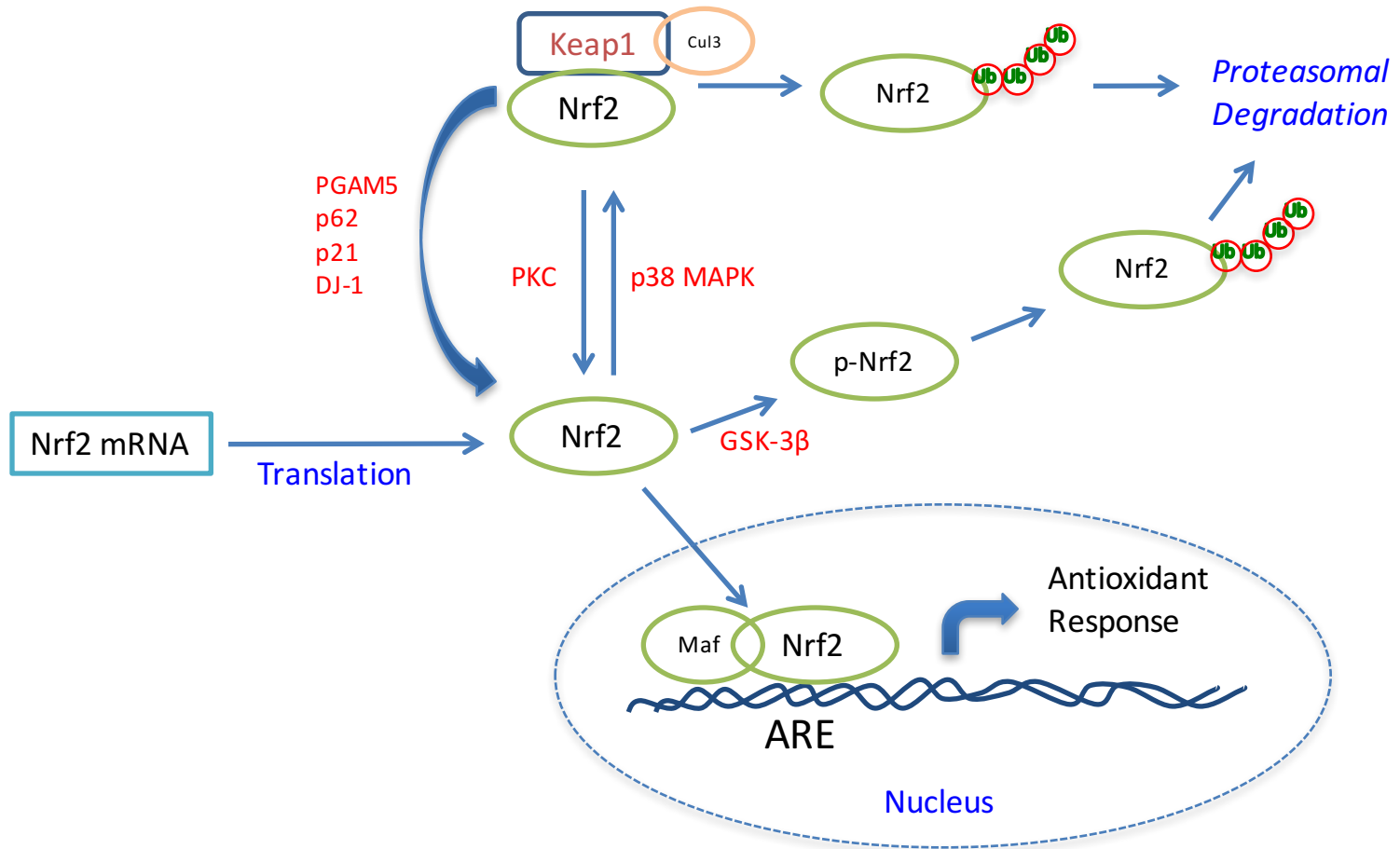


Fig. S4 – Diagram depicting post-translational mechanisms controlling Nrf2 levels.