

Figure S24. Focused ion beam images of secretory stage enamel forming at Level 2 in a wild-type mouse mandibular incisor. **Top:** Low magnification montage of the incisor Level 2 cross-section that was characterized. Boxes outline the regions detailed by higher magnification montages shown below. Downward pointing arrowheads indicate the position of the DEJ. **Key:** Am, ameloblast; d, dentin; e, enamel; TP, Tomes Process; r, rod enamel; horizontal pointing arrowheads, interrod enamel.

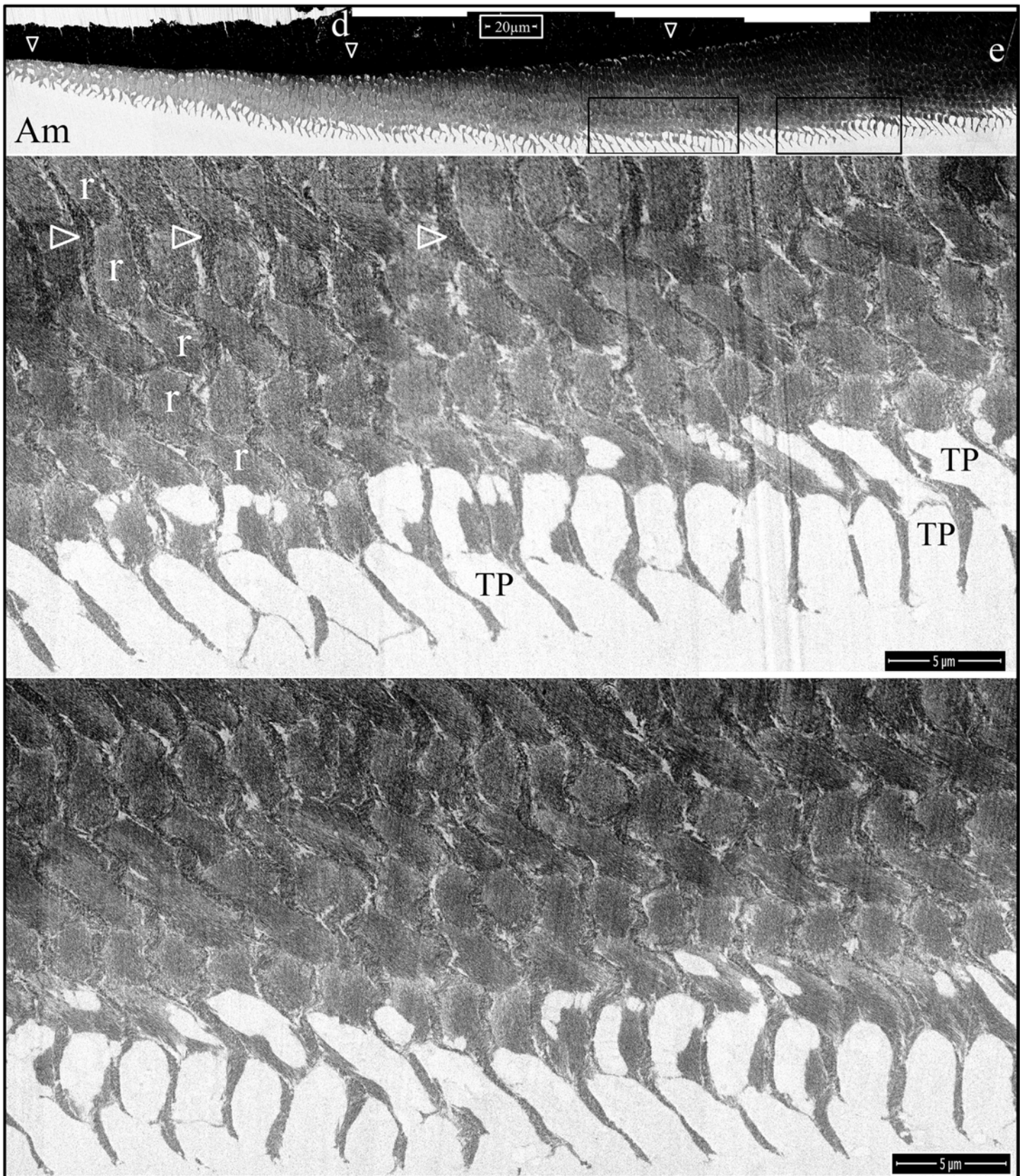


Figure S25. Focused ion beam images of secretory stage enamel forming at Level 2 in a wild-type mouse mandibular incisor. **Top:** Low magnification montage of the incisor Level 2 cross-section that was characterized. Boxes outline the regions detailed by higher magnification montages shown below. Downward pointing arrowheads indicate the position of the DEJ. **Key:** Am, ameloblast; d, dentin; e, enamel; TP, Tomes Process; r, rod enamel; horizontal pointing arrowheads, interrod enamel.

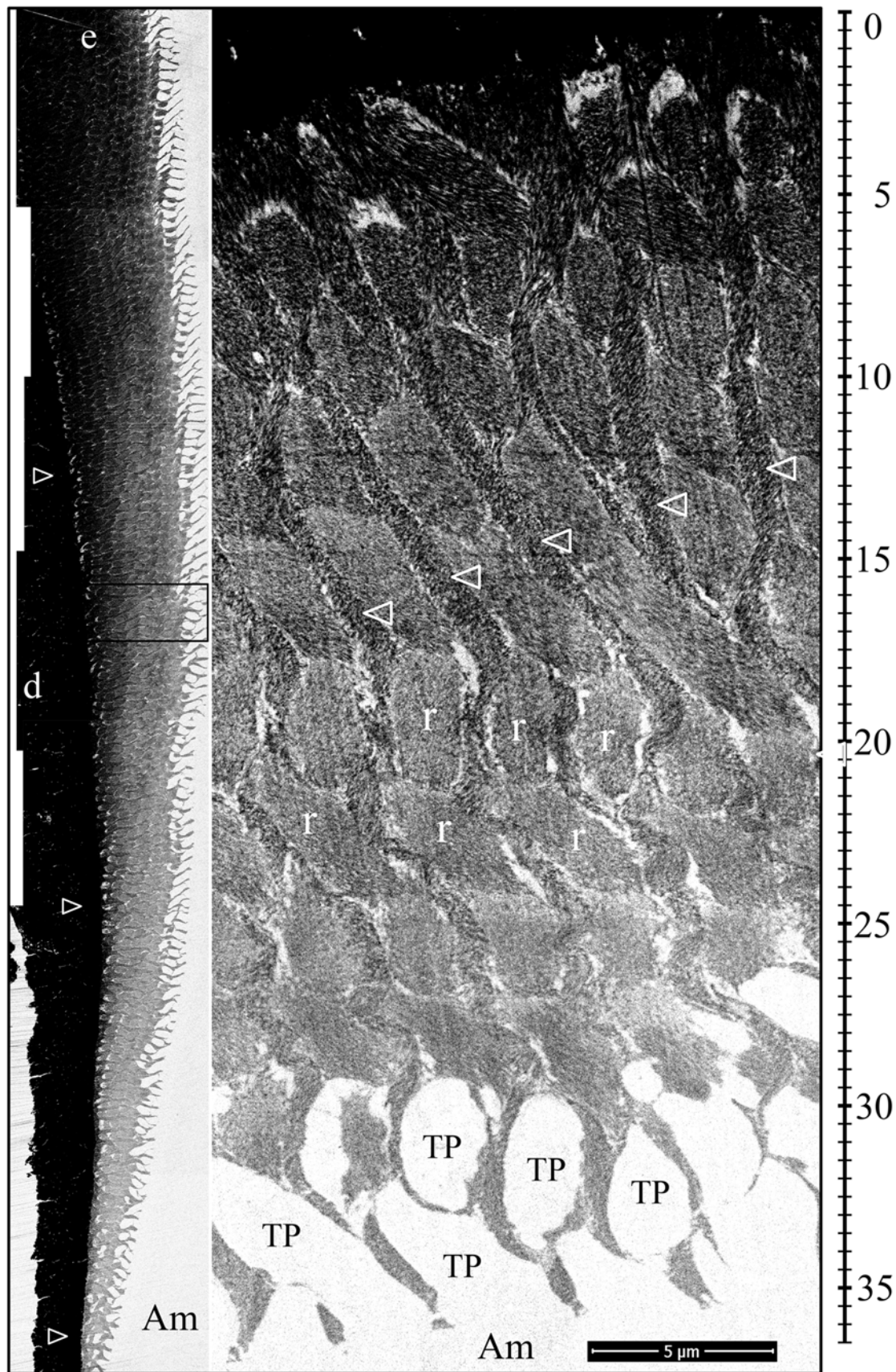


Figure S26. Focused ion beam images of secretory stage enamel forming at Level 2 in a wild-type mouse mandibular incisor. **Left:** Low magnification montage of the incisor Level 2 cross-section that was characterized. Box outlines the higher magnification montage on the right. Rightward pointing arrowheads indicate the position of the DEJ. **Key:** Am, ameloblast; d, dentin; e, enamel; TP, Tomes Process; r, rod enamel; horizontal pointing arrowheads, interrod enamel.