

Supplementary Figures

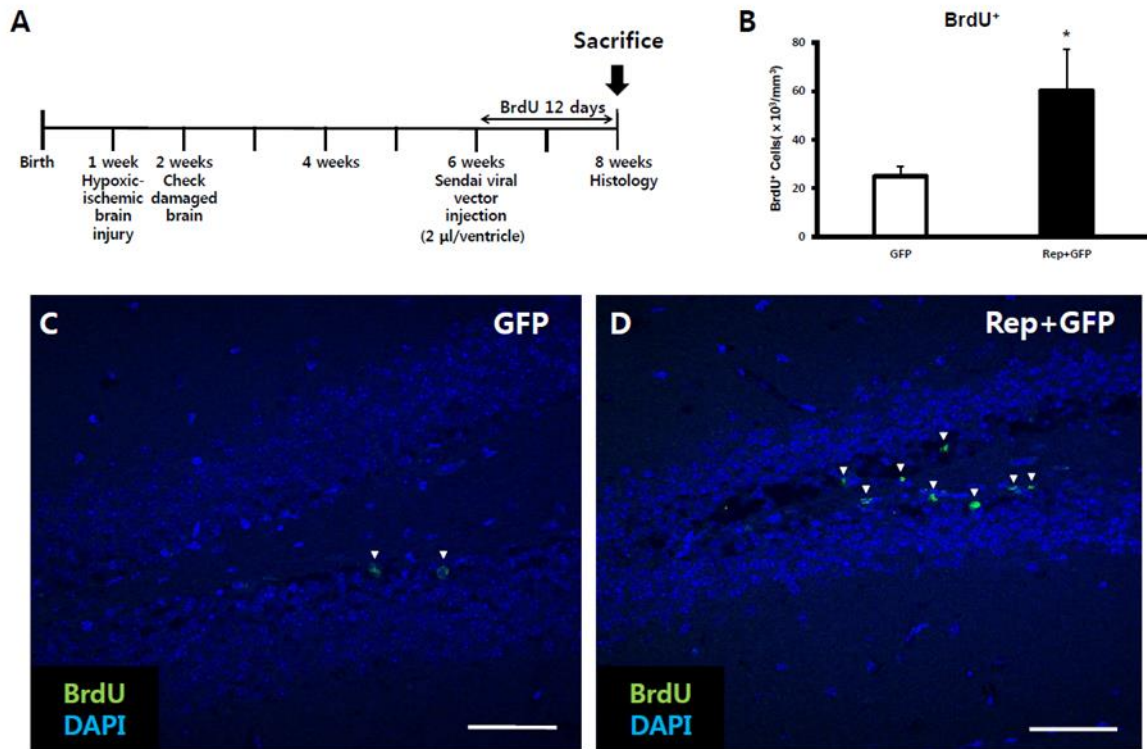


Figure S1. The number of BrdU⁺ cells in the hippocampus two weeks after the surgical treatment in chronic hypoxic-ischemic brain injury. (A) Schematic timeline of the experiment. (B) The density of BrdU⁺ cells in the hippocampus was significantly higher in the treatment group than the control group ($t = 2.349$, $p < 0.05$). (C) The hippocampus of GFP control group. (D) The hippocampus of treatment group. Both C and D are images of immunohistochemistry results by confocal microscope. Cells with double positive for DAPI, BrdU are indicated by the white arrow. Scale bars = 50 μ m.

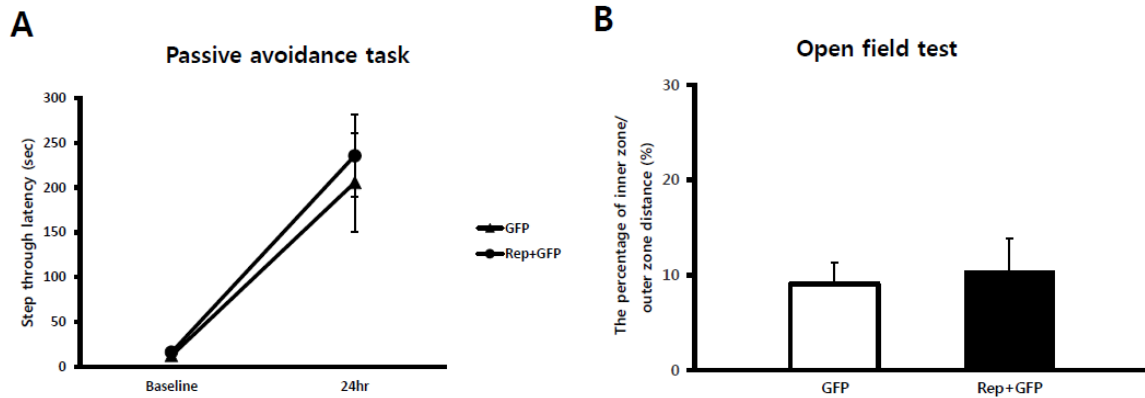


Figure S2. Effects of reprogramming factor expression on neurobehavioral functions in the sham-operated control group and treatment group. (A) Passive avoidance task result showed that there was no significant difference between sham-operated control group (205.7 ± 55.7 seconds) and treatment group (235.7 ± 45.7 seconds) ($n = 6$ per group). (B) Open field test result showed that there was no significant difference between sham-operated control group ($9.1 \pm 2.0\%$) and treatment group ($10.3 \pm 3.3\%$) ($n = 6$ per group).