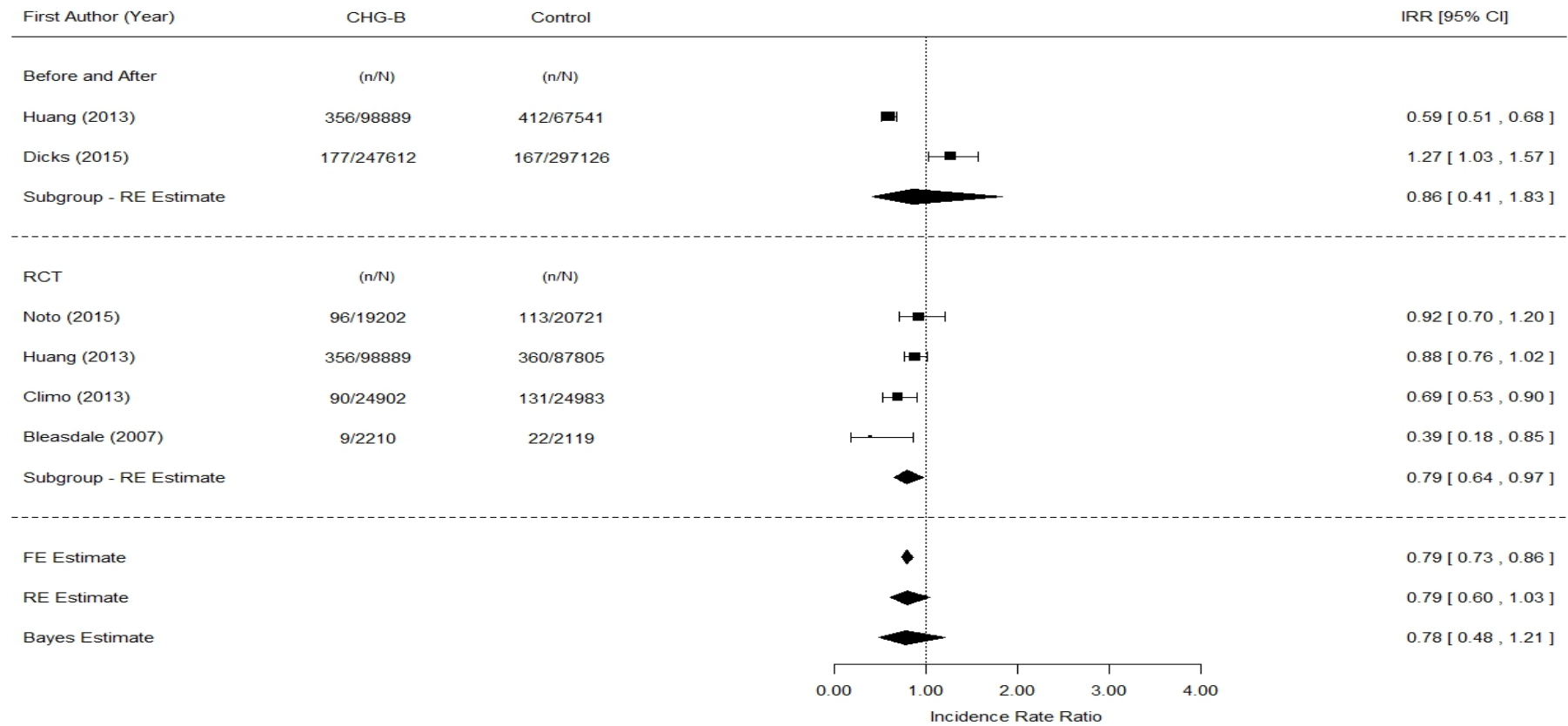
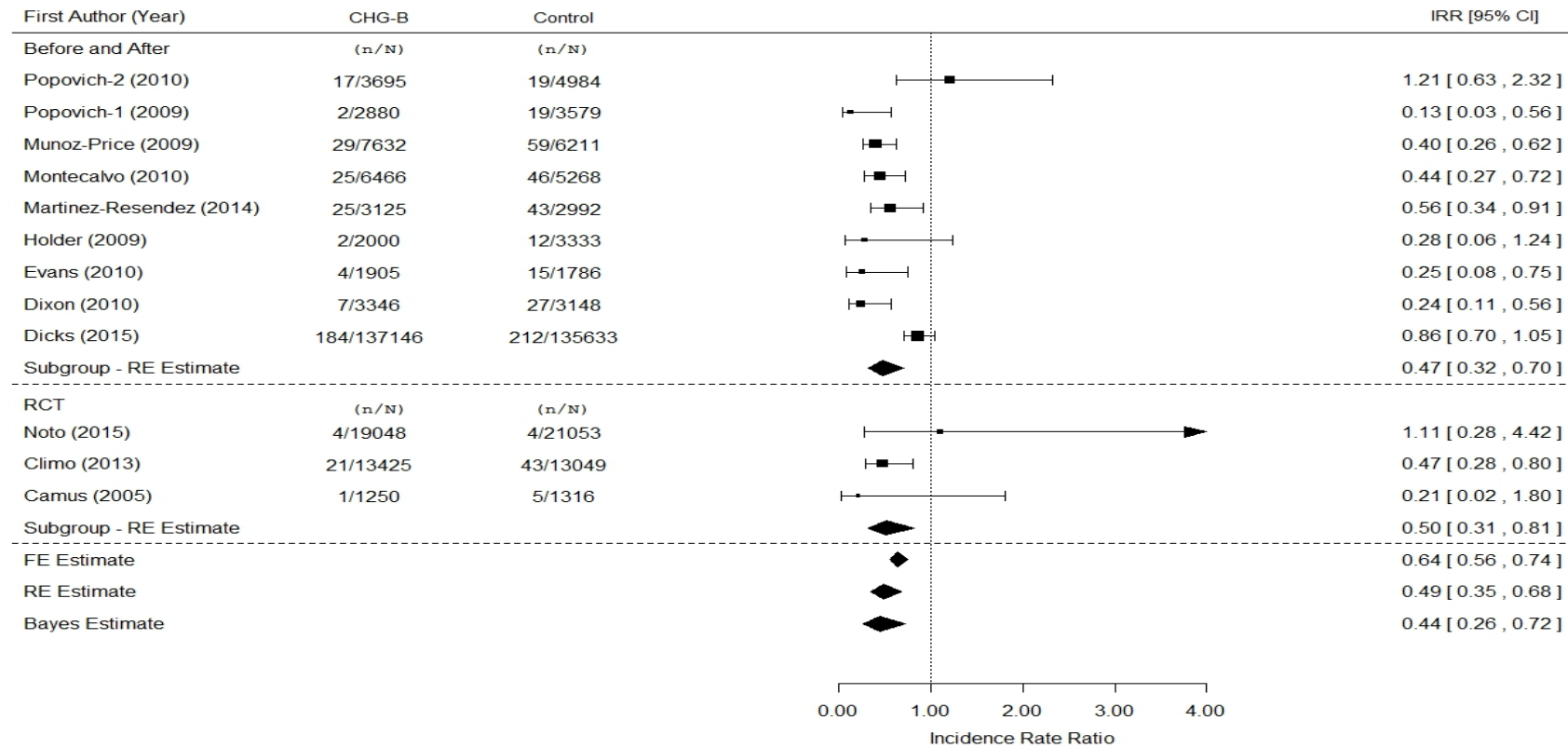


(a) BSI



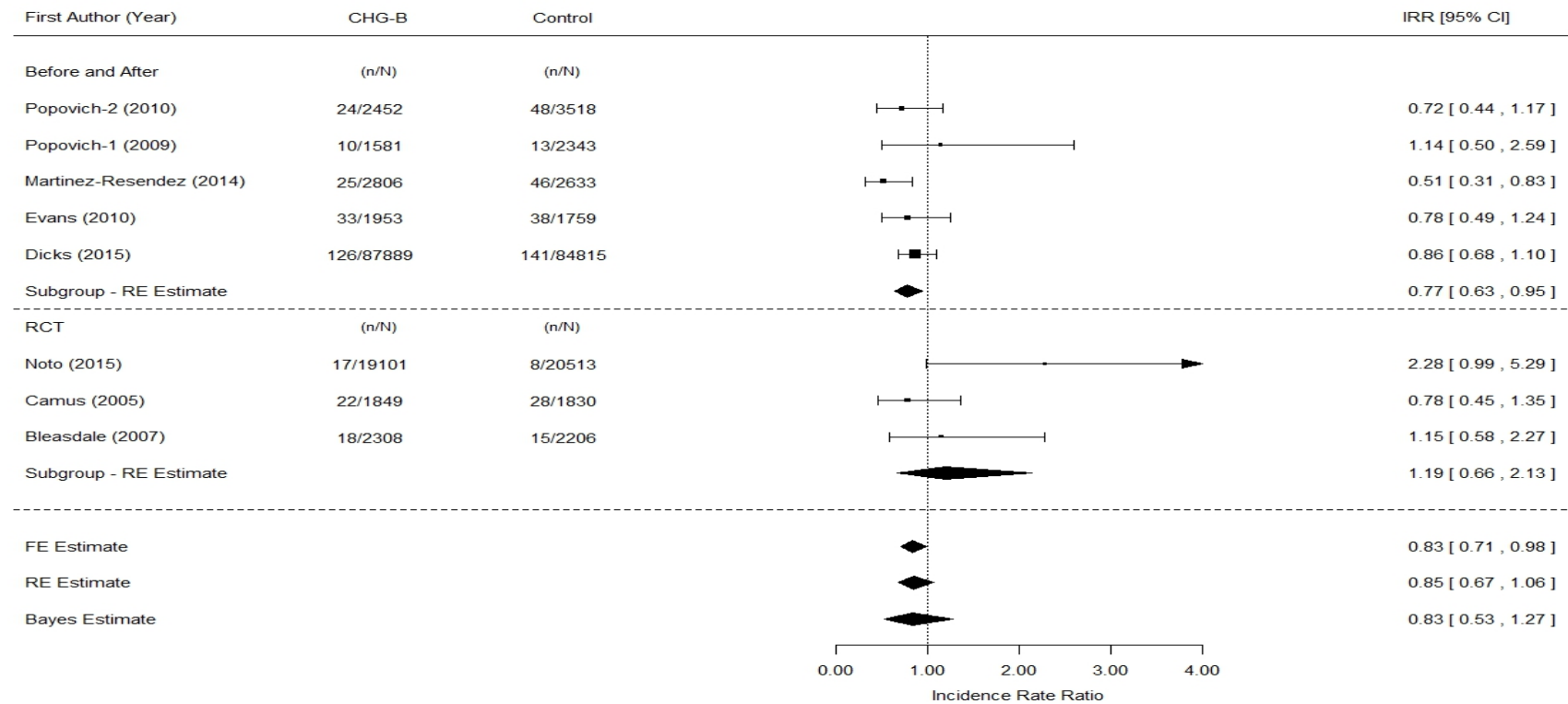
**Figure S1.** Forest plots presenting the effectiveness of CHG bathing in reducing: BSI (panel A), CLABSI (panel B), VAP (panel C), CAUTI (panel D), MRSA colonisation (panel E), MRSA associated BSI (panel F), VRE colonisation (panel G), VRE associated BSI (panel H), and Clostridium Difficile infections (panel I). FE = fixed effects, RE = random effects.

(b) CLABSI



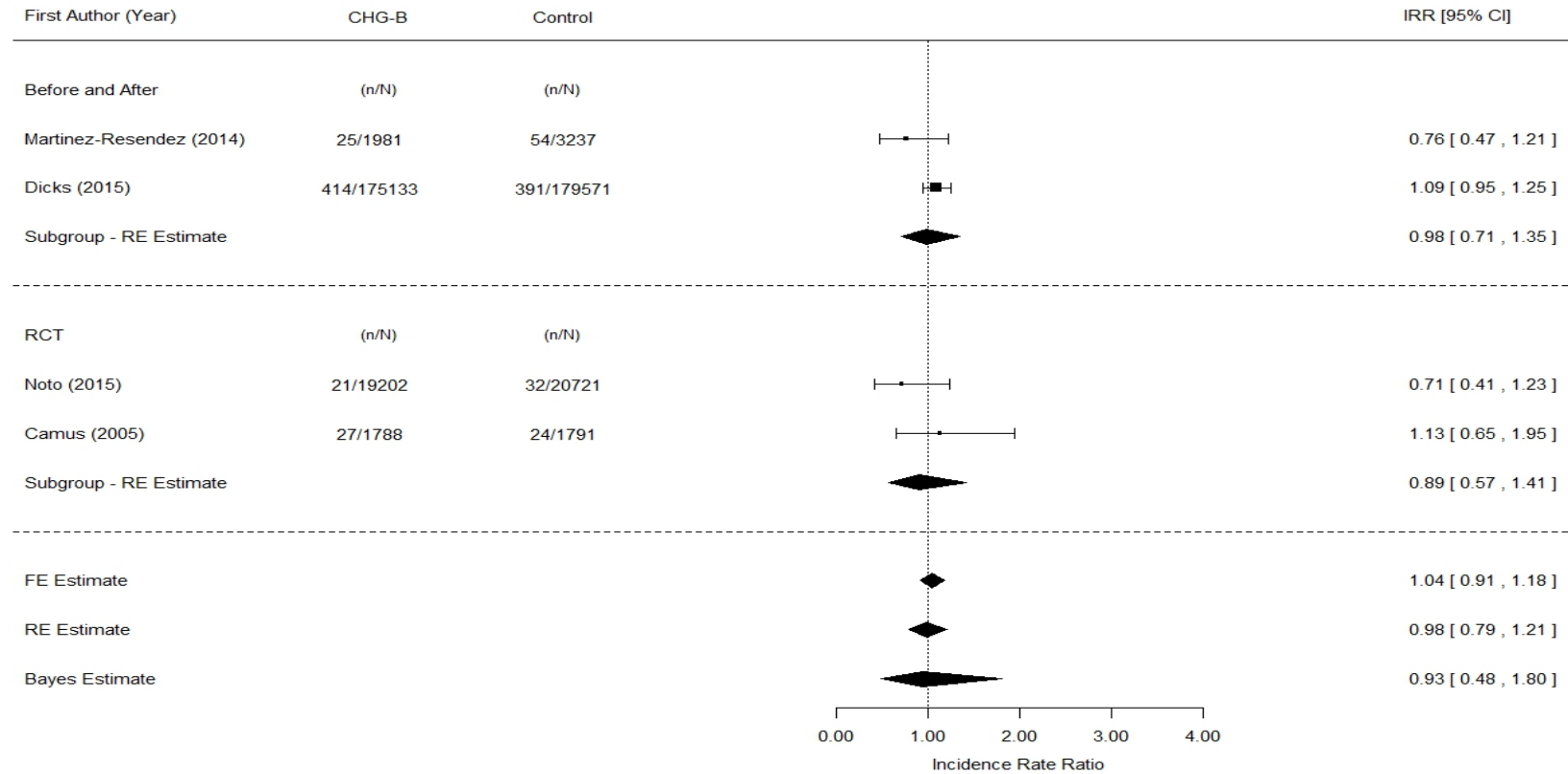
**Figure S1.** Forest plots presenting the effectiveness of CHG bathing in reducing: BSI (panel A), CLABSI (panel B), VAP (panel C), CAUTI (panel D), MRSA colonisation (panel E), MRSA associated BSI (panel F), VRE colonisation (panel G), VRE associated BSI (panel H), and Clostridium Difficile infections (panel I). FE = fixed effects, RE = random effects.

(c) VAP



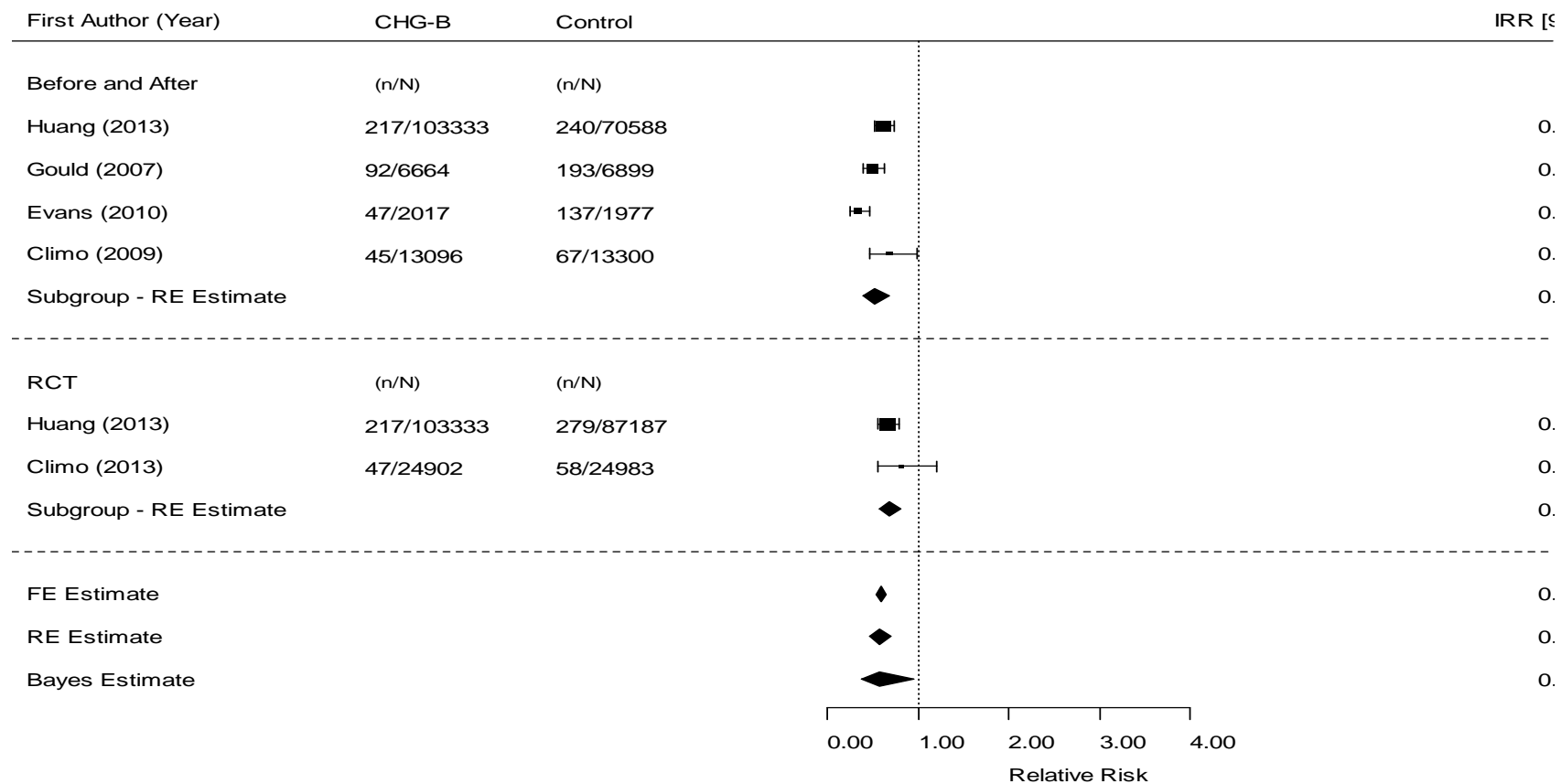
**Figure S1.** Forest plots presenting the effectiveness of CHG bathing in reducing: BSI (panel A), CLABSI (panel B), VAP (panel C), CAUTI (panel D), MRSA colonisation (panel E), MRSA associated BSI (panel F), VRE colonisation (panel G), VRE associated BSI (panel H), and Clostridium Difficile infections (panel I). FE = fixed effects, RE = random effects.

(d) CAUTI



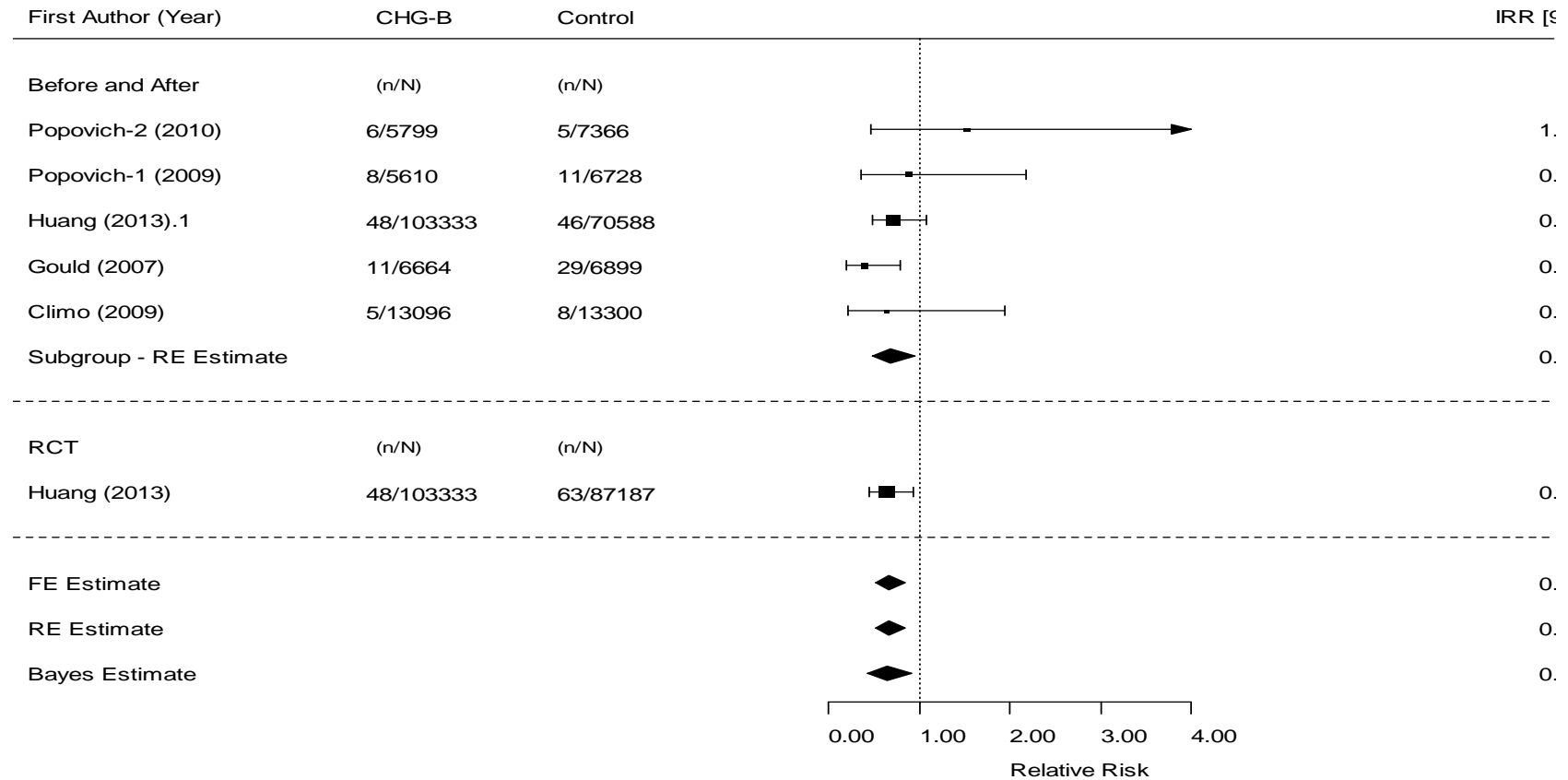
**Figure S1.** Forest plots presenting the effectiveness of CHG bathing in reducing: BSI (panel A), CLABSI (panel B), VAP (panel C), CAUTI (panel D), MRSA colonisation (panel E), MRSA associated BSI (panel F), VRE colonisation (panel G), VRE associated BSI (panel H), and Clostridium Difficile infections (panel I). FE = fixed effects, RE = random effects.

(e) MRSA-C



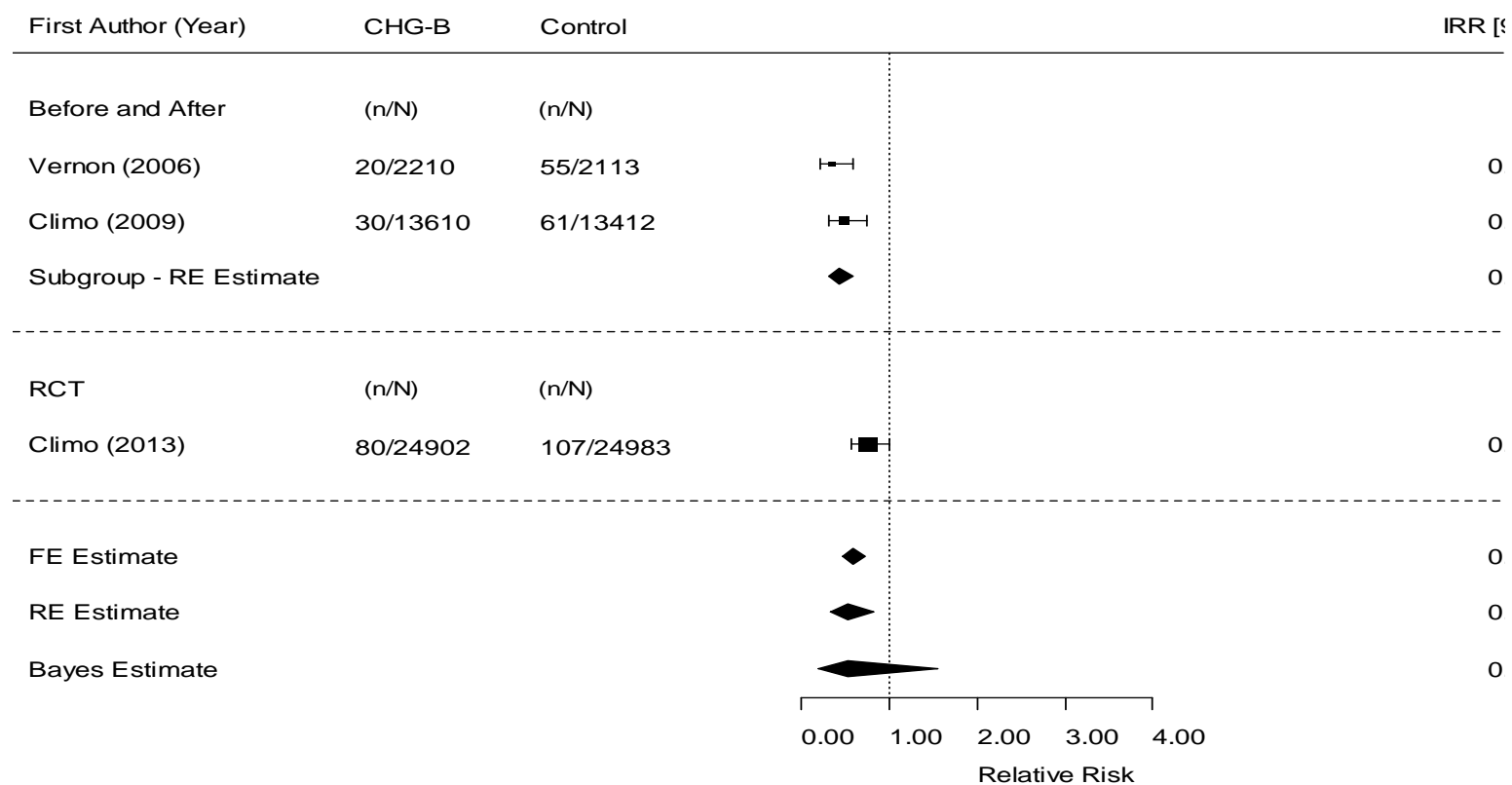
**Figure S1.** Forest plots presenting the effectiveness of CHG bathing in reducing: BSI (panel A), CLABSI (panel B), VAP (panel C), CAUTI (panel D), MRSA colonisation (panel E), MRSA associated BSI (panel F), VRE colonisation (panel G), VRE associated BSI (panel H), and Clostridium Difficile infections (panel I). FE = fixed effects, RE = random effects.

(f) MRSA-B



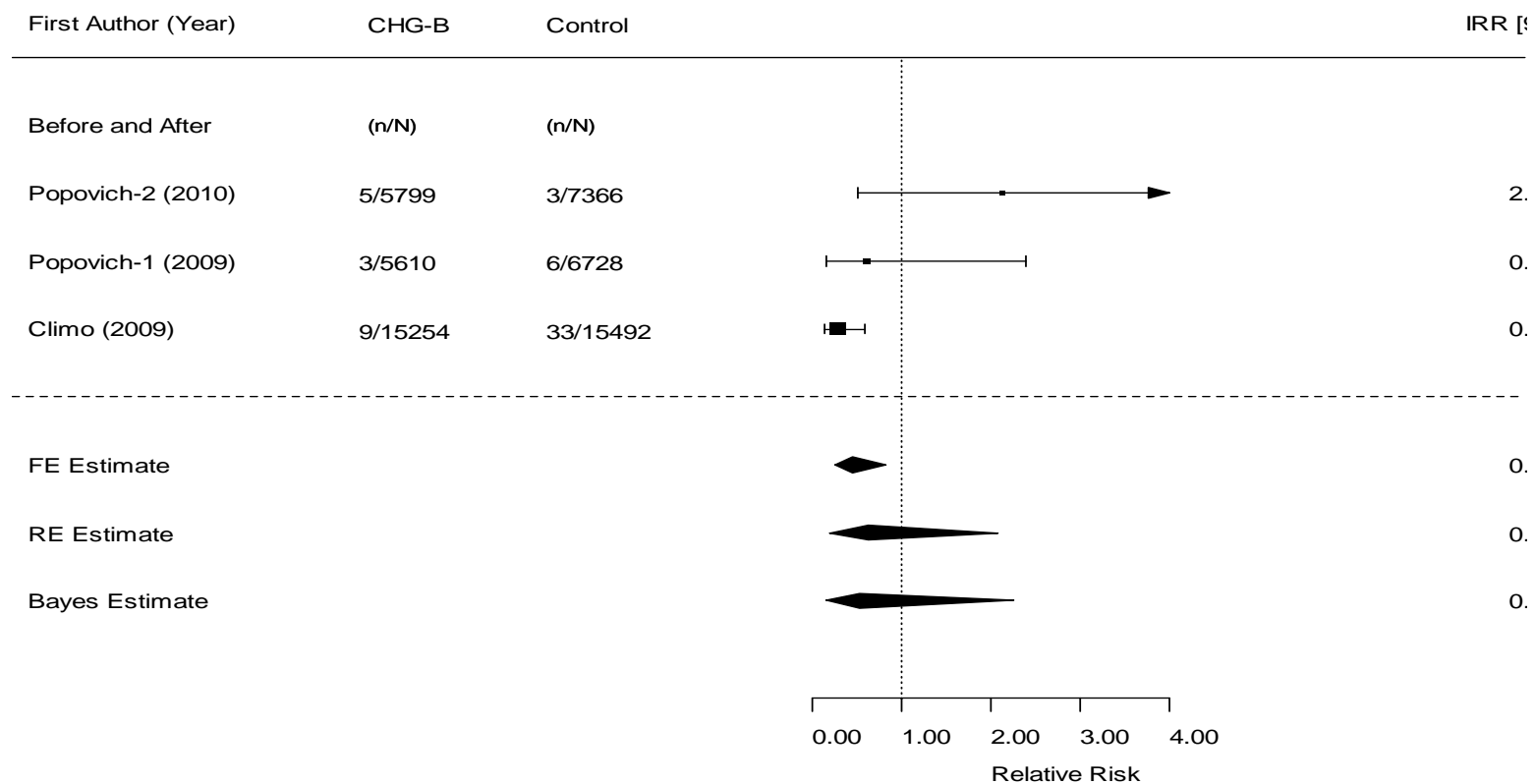
**Figure S1.** Forest plots presenting the effectiveness of CHG bathing in reducing: BSI (panel A), CLABSI (panel B), VAP (panel C), CAUTI (panel D), MRSA colonisation (panel E), MRSA associated BSI (panel F), VRE colonisation (panel G), VRE associated BSI (panel H), and Clostridium Difficile infections (panel I). FE = fixed effects, RE = random effects.

(g) VRE-C



**Figure S1.** Forest plots presenting the effectiveness of CHG bathing in reducing: BSI (panel A), CLABSI (panel B), VAP (panel C), CAUTI (panel D), MRSA colonisation (panel E), MRSA associated BSI (panel F), VRE colonisation (panel G), VRE associated BSI (panel H), and Clostridium Difficile infections (panel I). FE = fixed effects, RE = random effects.

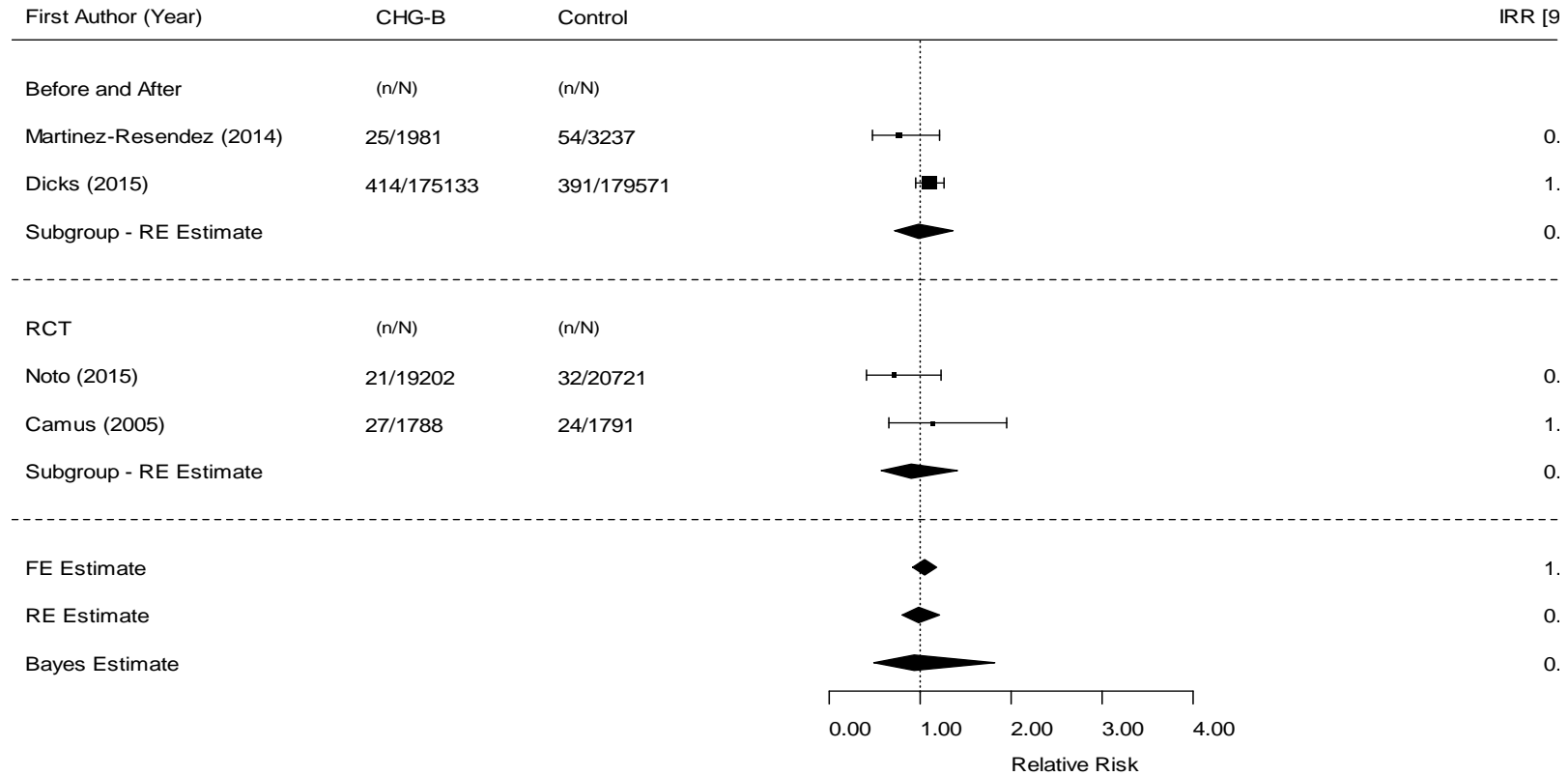
(h) VRE-B



**Figure S1.** Forest plots presenting the effectiveness of CHG bathing in reducing: BSI (panel A), CLABSI (panel B), VAP (panel C), CAUTI (panel D), MRSA colonisation (panel E), MRSA associated BSI (panel F), VRE colonisation (panel G), VRE associated BSI (panel H), and Clostridium Difficile infections (panel I). FE = fixed effects, RE = random effects.



(i) c-diff



**Figure S1.** Forest plots presenting the effectiveness of CHG bathing in reducing: BSI (panel A), CLABSI (panel B), VAP (panel C), CAUTI (panel D), MRSA colonisation (panel E), MRSA associated BSI (panel F), VRE colonisation (panel G), VRE associated BSI (panel H), and Clostridium Difficile infections (panel I). FE = fixed effects, RE = random effects.