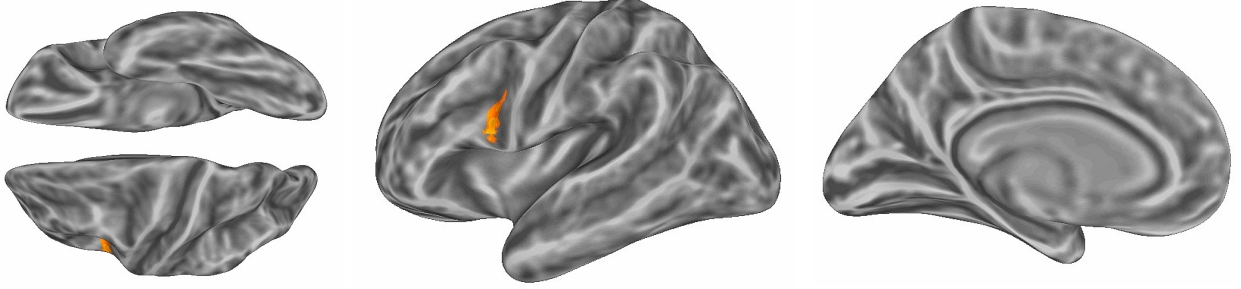


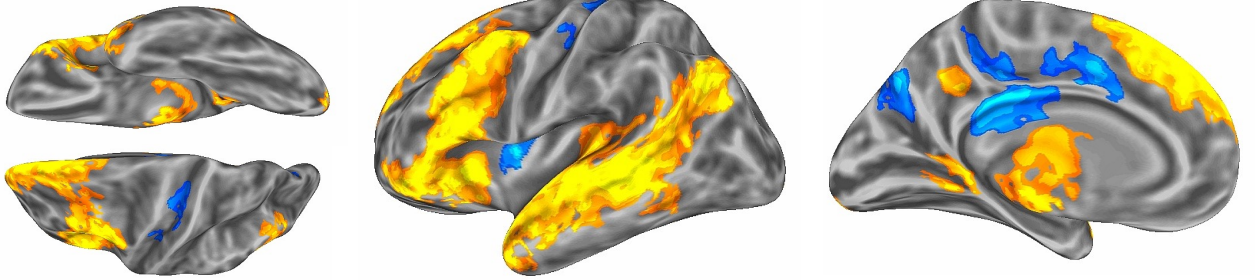
Whole-brain Analysis:  
*Borderline detected vs. Easy detected*

LEFT HEMISPHERE

CONTEXT



TARGET



VENTRAL/DORSAL

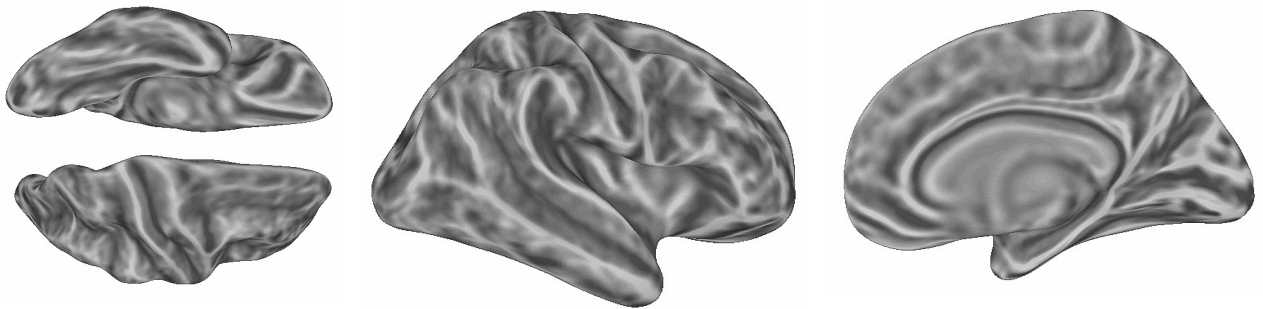
LATERAL

MEDIAL



RIGHT HEMISPHERE

CONTEXT



TARGET

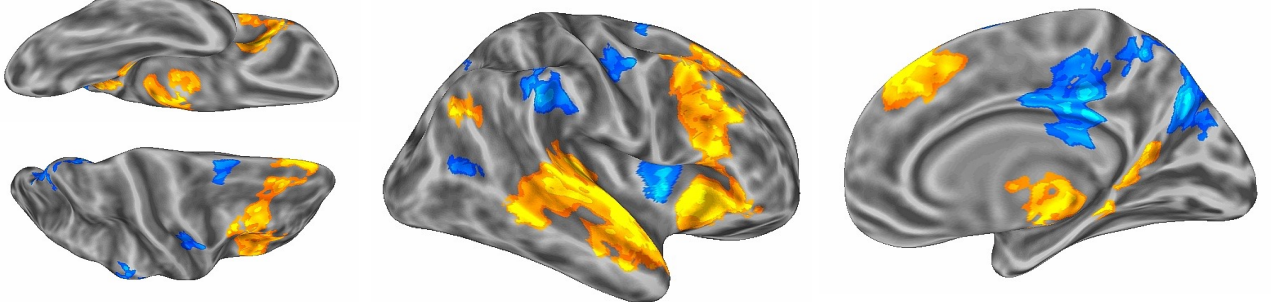
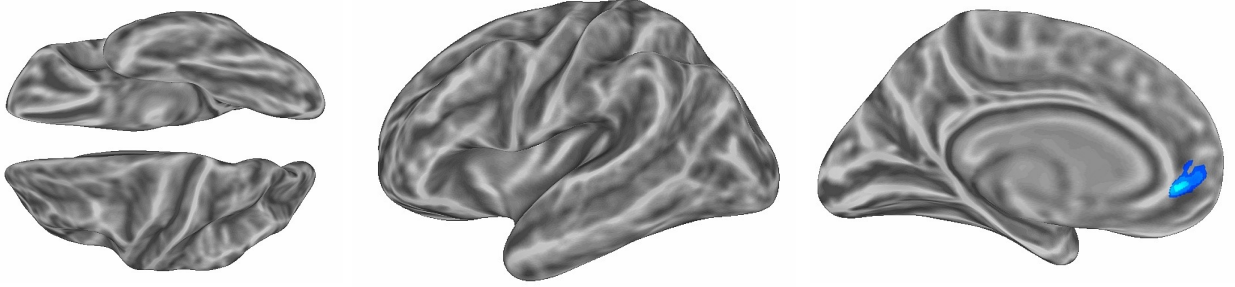


Figure S1: Results of the whole-brain comparison between the *borderline detected* and *easy detected* condition separate for context and target sentences shown on inflated average brain surfaces of the left and right hemisphere. The individual per-vertex threshold was  $p < .01$  (corrected FWE  $p < .05$ ). Warm colors indicate higher levels of activation for *borderline detected* context or target sentences, respectively; cold colors reflect greater activation for the *easy detected* context or target sentences, respectively.

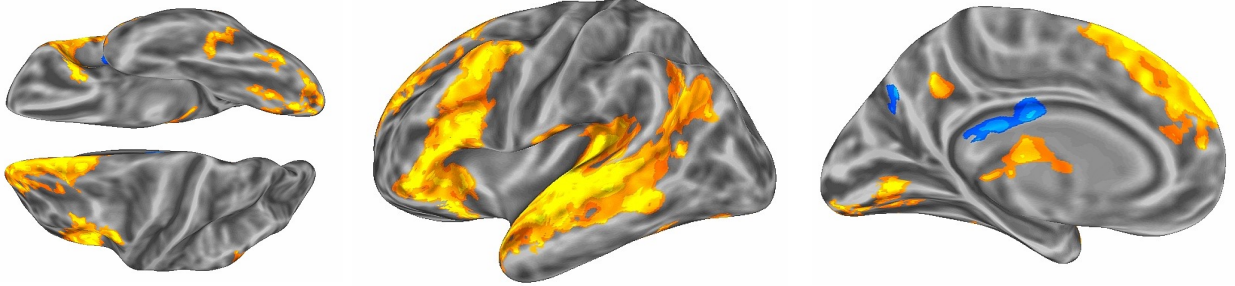
Whole-brain Analysis:  
*Borderline control vs. Easy control*

LEFT HEMISPHERE

CONTEXT



TARGET



VENTRAL/DORSAL

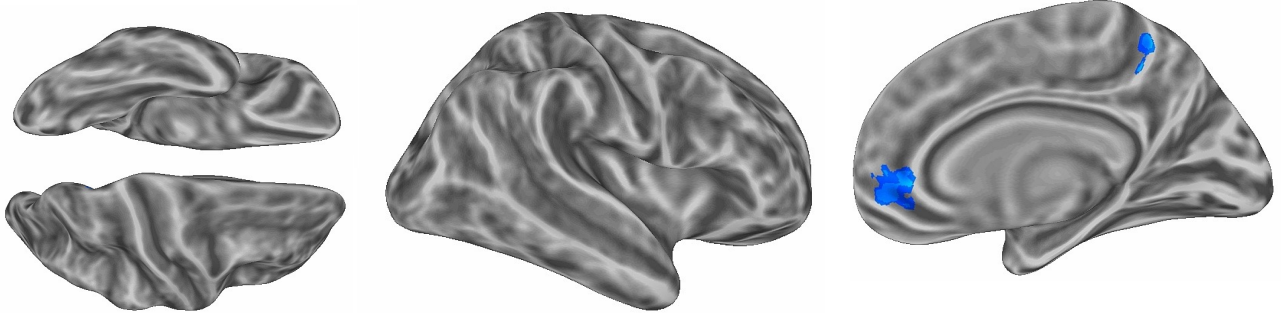
LATERAL

MEDIAL



RIGHT HEMISPHERE

CONTEXT



TARGET

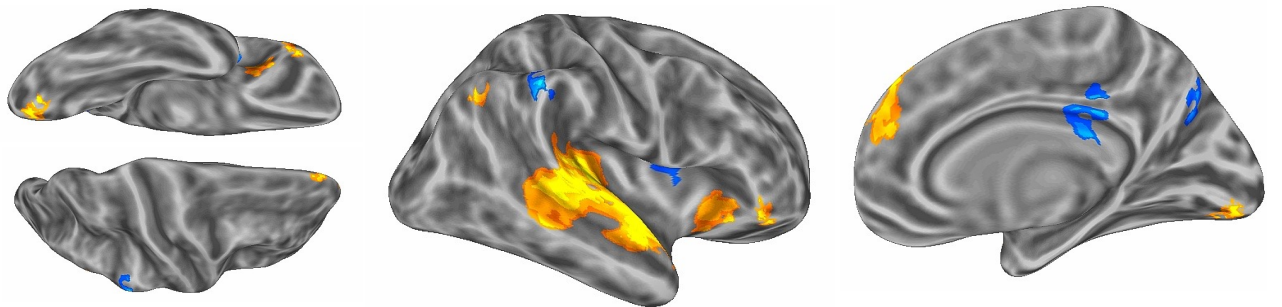
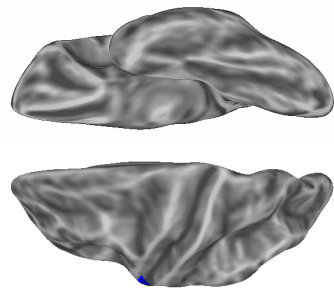


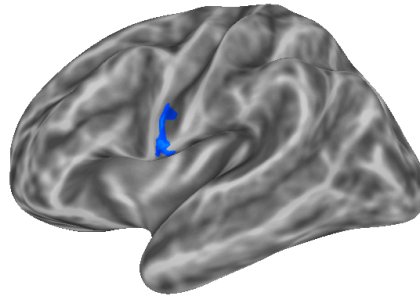
Figure S2: Results of the whole-brain comparison between the *borderline control* and *easy control* condition separate for context and target sentences shown on inflated average brain surfaces of the left and right hemisphere. The individual per-vertex threshold was  $p < .01$  (corrected FWE  $p < .05$ ). Warm colors indicate higher levels of activation for *borderline control* context or target sentences, respectively; cold colors reflect greater activation for the *easy control* context or target sentences, respectively.

Whole-brain Analysis:  
*Borderline non-detected vs. Borderline control*

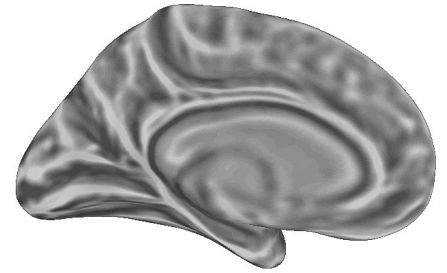
LEFT HEMISPHERE



VENTRAL/DORSAL



LATERAL



MEDIAL



RIGHT HEMISPHERE

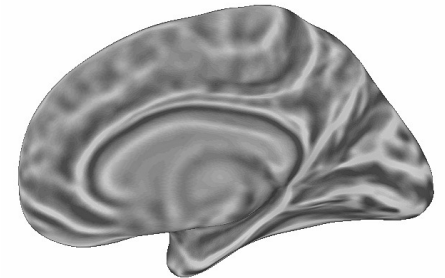
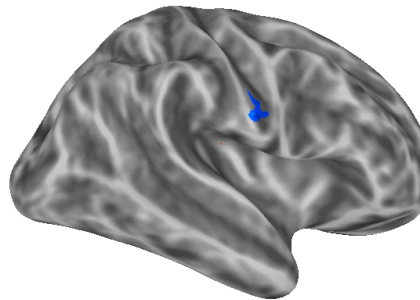
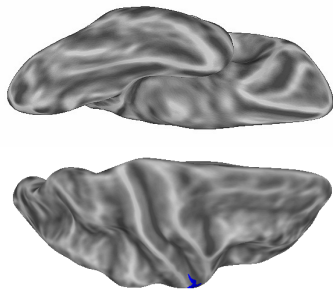


Figure S3: Results of the whole-brain comparison between the *borderline non-detected* and *borderline* target sentences shown on inflated average brain surfaces of the left and right hemisphere. The individual per-vertex threshold was  $p < .01$  (corrected FWE  $p < .05$ ). Warm colors indicate higher levels of activation for *borderline non-detected* target sentences, respectively; cold colors reflect greater activation for the *borderline control* target sentences, respectively.