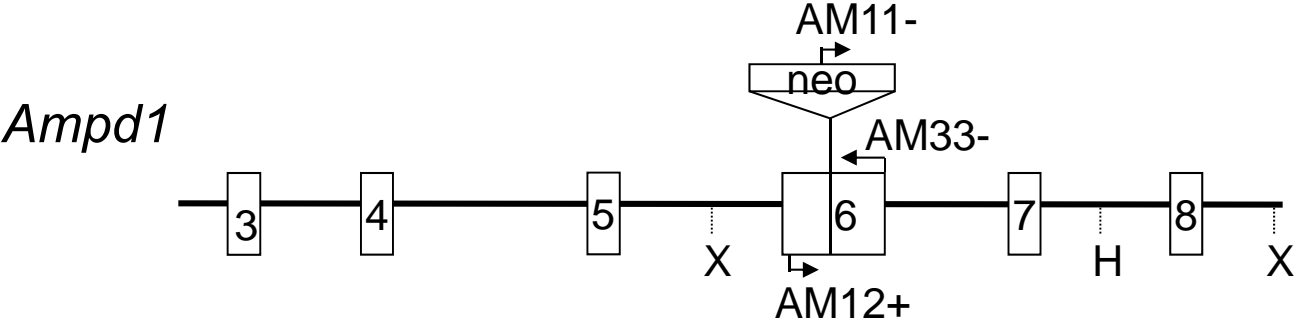
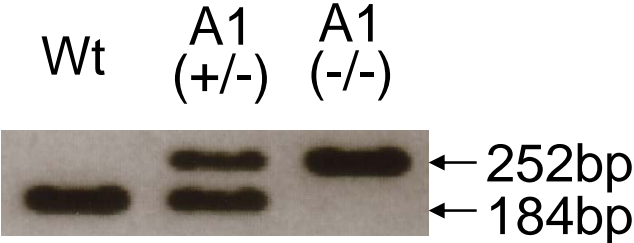


Figure S1

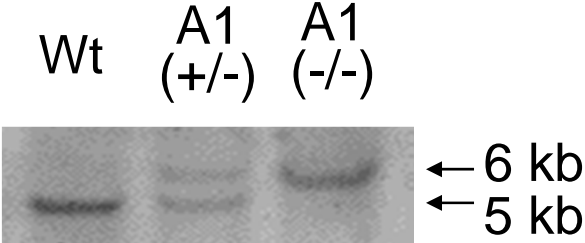
A



B



C



Supplementary Data

Legend for Supplemental Figure

Supplemental Figure S1. Disruption of AMPD1 gene.

A: Mouse AMPD1 gene and gene targeting strategy. Long- and short-arm genomic fragments of the mouse AMPD1 gene were reconstructed into a pSK vector. The long- and short-arm fragments, divided by the insertion of neomycin resistant gene driven by PGK promoter, contained exons 3 to 8 and introns. As a result of homologous recombination, exon 6 of AMPD1 was inserted using a neomycin resistant gene. Upstream of the long arm, the diphtheria toxin A-chain gene was inserted to function as a negative selectable marker for random integration. B and C: PCR screening and Southern blot analysis for genotyping of AMPD1 knockout mice.