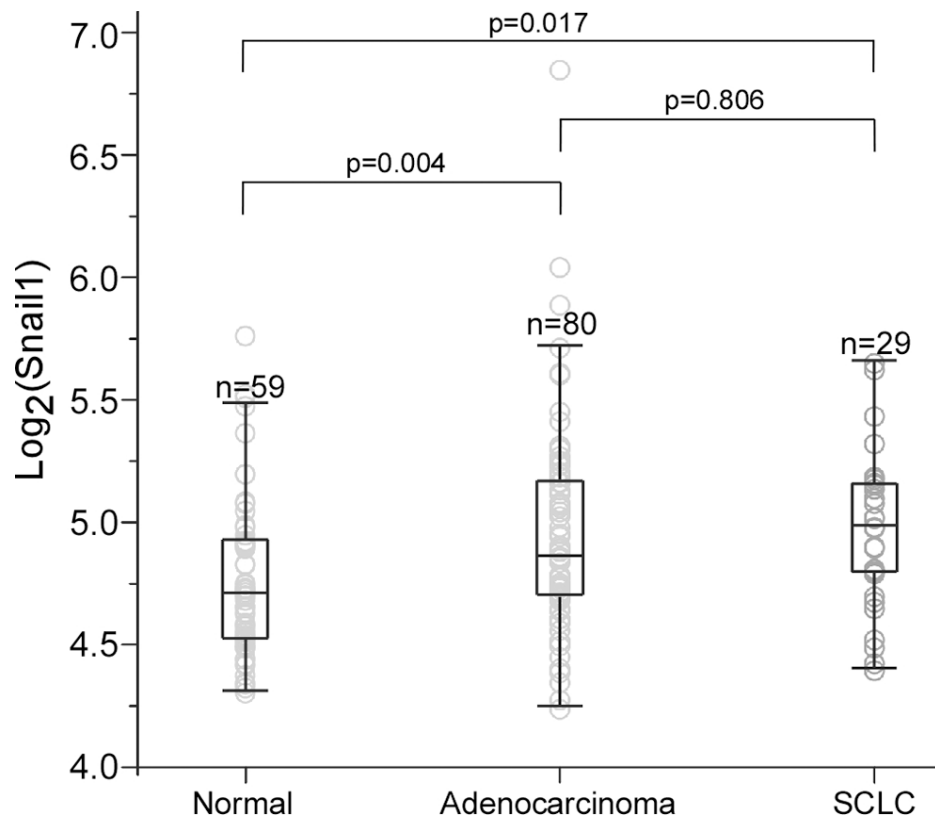


Rs2853677 modulates Snail1 binding to the *TERT* enhancer and affects lung adenocarcinoma susceptibility

Supplementary Materials



Supplementary Figure S1: Snail1 expression in lung adenocarcinoma cell lines and in SCLC cell lines. Gene Expression Omnibus database (GSE32036) was interrogated for Snail1 expression in human normal lung epithelial cells (59), lung adenocarcinoma cell lines (80) and SCLC cell lines (29) [39].