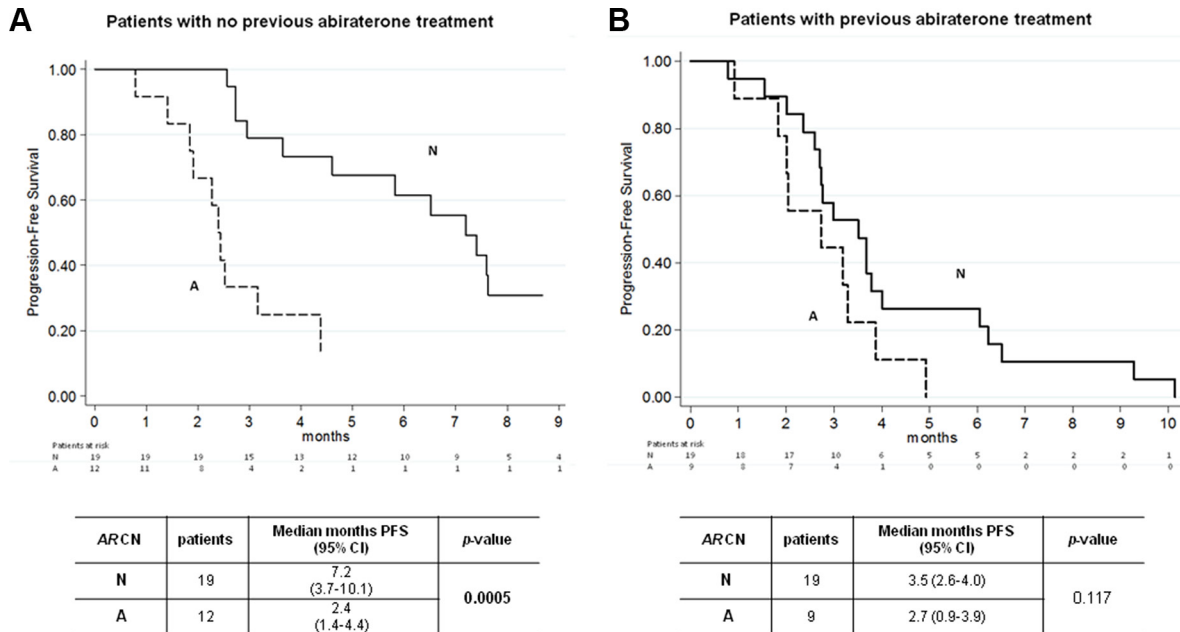
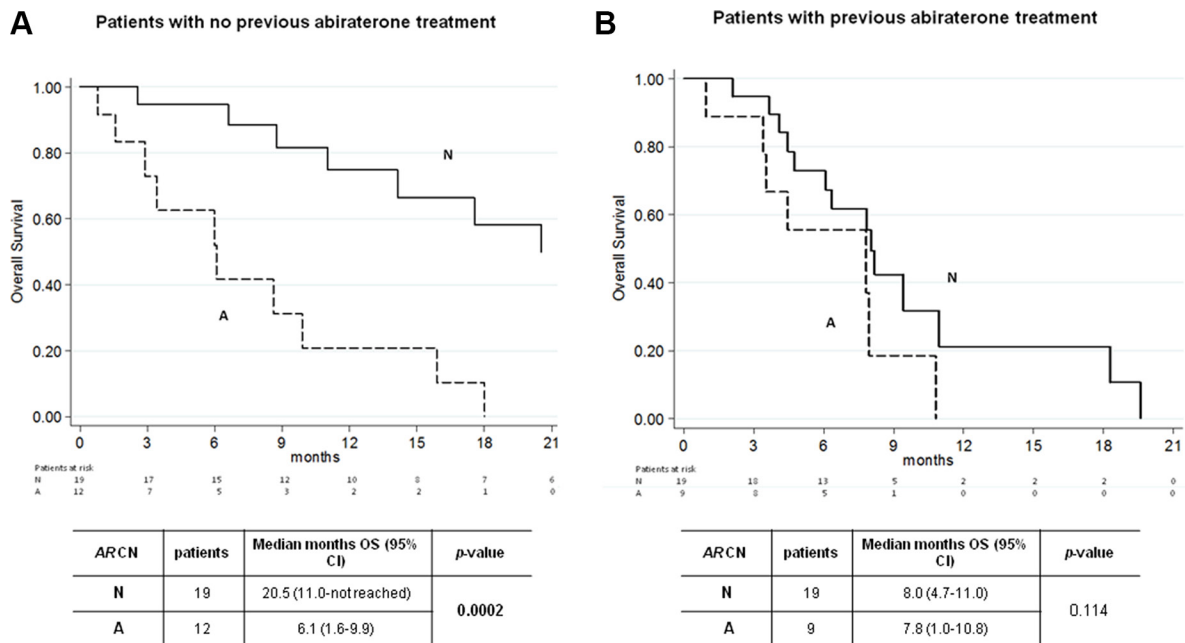


# Circulating AR copy number and outcome to enzalutamide in docetaxel-treated metastatic castration-resistant prostate cancer

## Supplementary Materials



Supplementary Figure S1: Progression free-survival curves made for AR CN gain vs. non-gain in patients without abiraterone and AR CN gain vs. non-gain with previous abiraterone.



Supplementary Figure S2: Overall survival curves made for AR CN gain vs. non-gain in patients without abiraterone and AR CN gain vs. non-gain with previous abiraterone.

**Supplementary Table S1: Sensitivity and specificity of *AR* copy number variations with respect to PFS and OS**

	<b>Sensitivity (95% CI)</b>	<b>Specificity (95% CI)</b>	<b>Overall Accuracy (95% CI)</b>
<b>Progression-free survival</b>			
<i>AR</i> CN	55.2 (41.5–68.1)	85.7 (73.4–93.1)	70.2 (58.2–82.1)
<b>Overall survival</b>			
<i>AR</i> CN	50.0 (35.1–64.9)	80.0 (65.1–89.8)	63.0 (49.1–77.0)

*AR*, androgen receptor; CN, copy number.