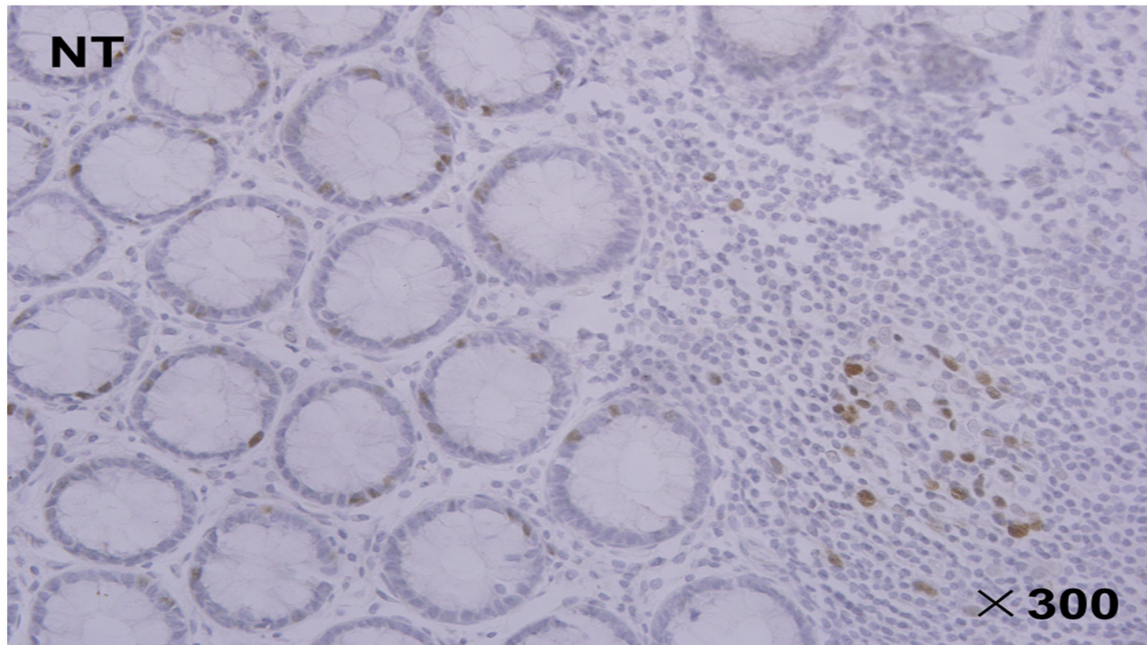
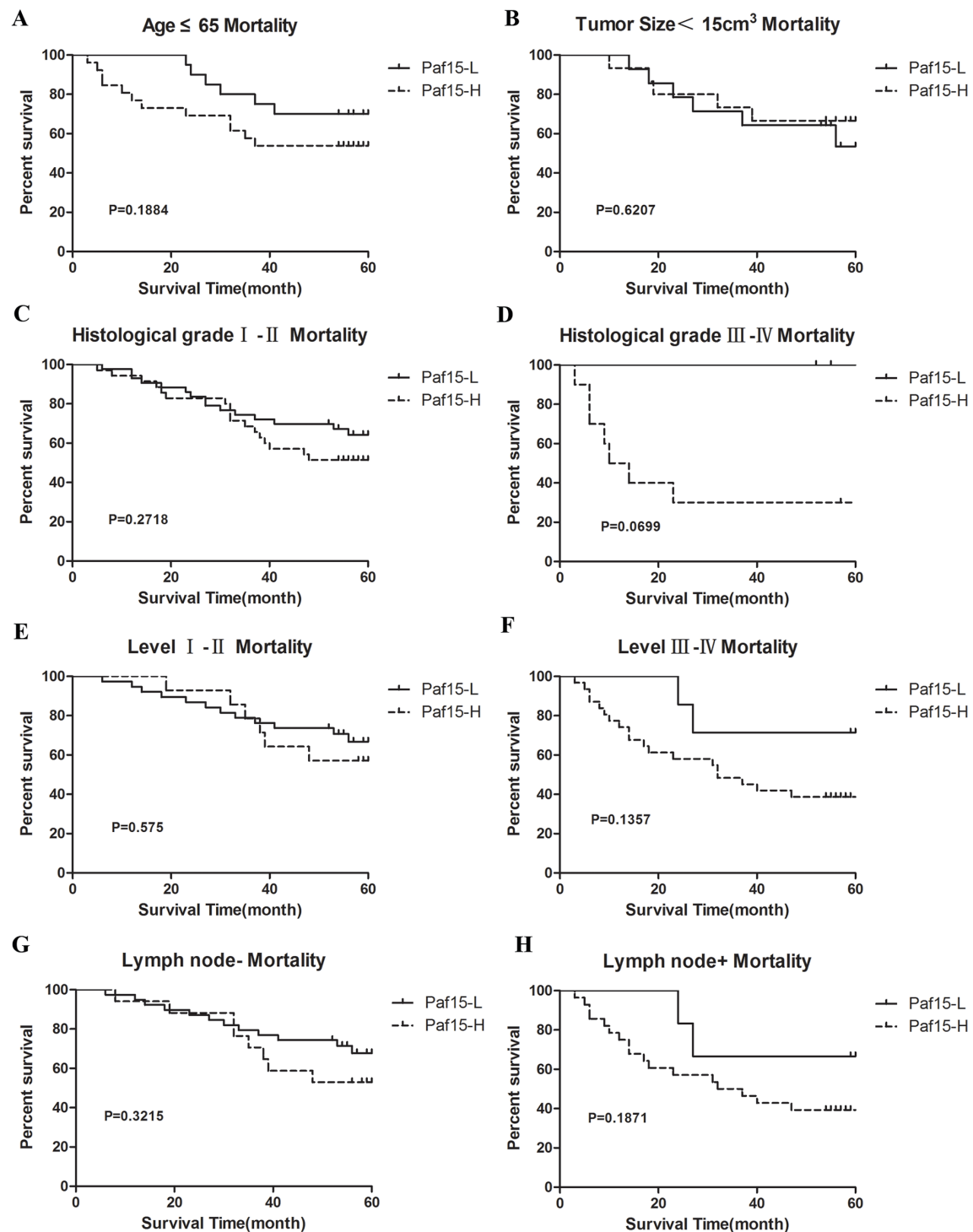


Paf15 expression correlates with rectal cancer prognosis, cell proliferation and radiation response

SUPPLEMENTARY FIGURES



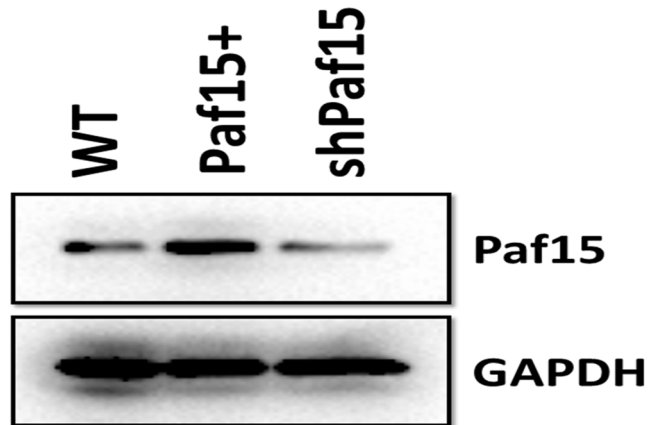
Supplementary Figure S1: Paf15 expression pattern in normal rectal tissue. Positive staining was found in normal rectal mucosal cells and mucosa-associated lymphoid follicles.



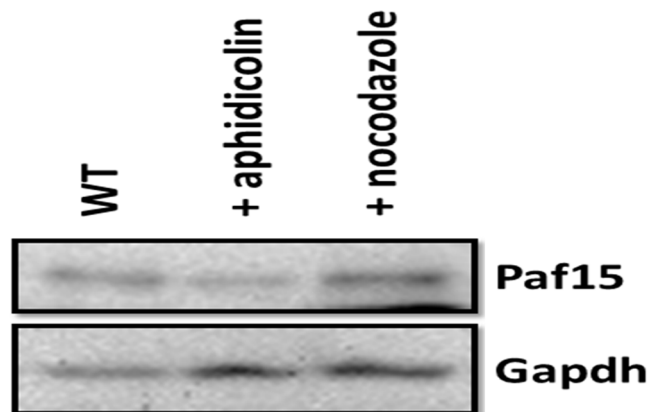
Supplementary Figure S2: Subgroup analyzes of 5-year survival. A. Subgroup analysis of patients younger than 65. B. Subgroup analysis of tumor size $\leq 15\text{cm}^3$. C. & D. Subgroup analyses of histological grade. E. & F. Subgroup analyses of pTNM stage. G. & H. Subgroup analyses of lymph node status. There were no statistically significant differences in any of these comparisons.



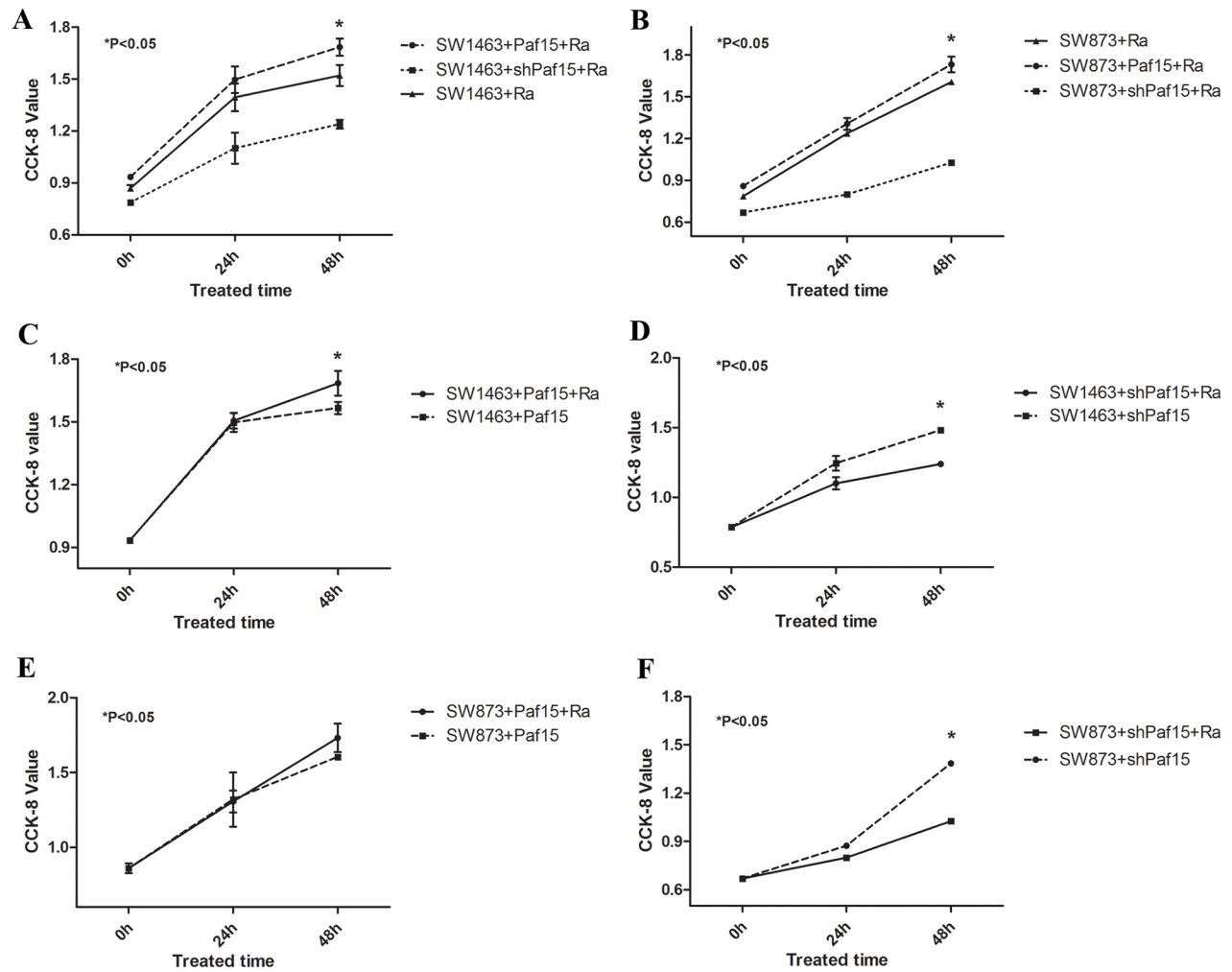
Supplementary Figure S3: Paf15 knockdown by different shPaf15 plasmids. Three different candidate shPaf15 plasmids were tested, and Paf15 expression was measured by RT-PCR. The plasmid chosen for this experiment was sh226.



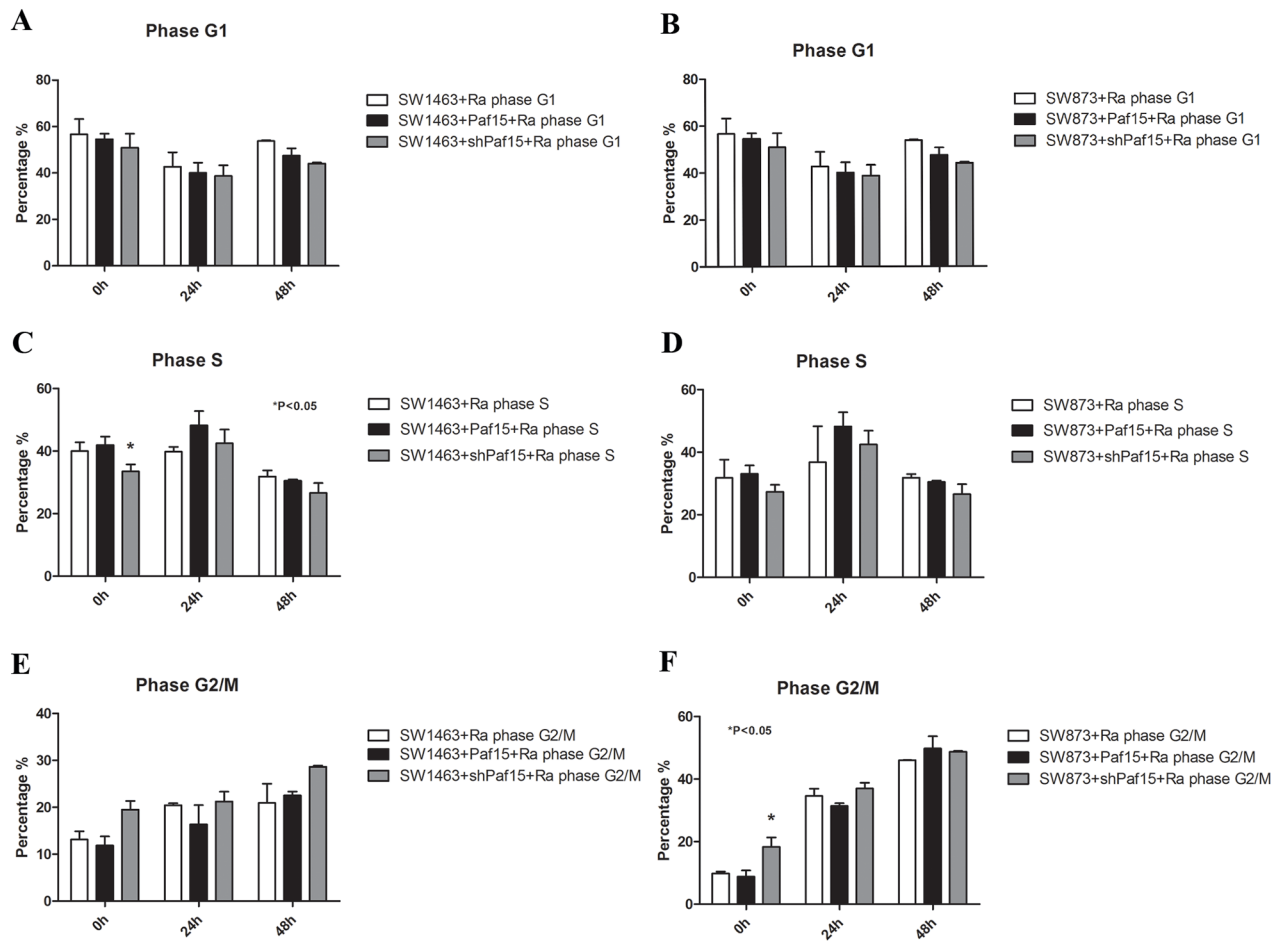
Supplementary Figure S4: Paf15 protein expression after plasmid transfections. RC cells were separately transfected with Paf15+, shPaf15, or empty plasmids for comparison.



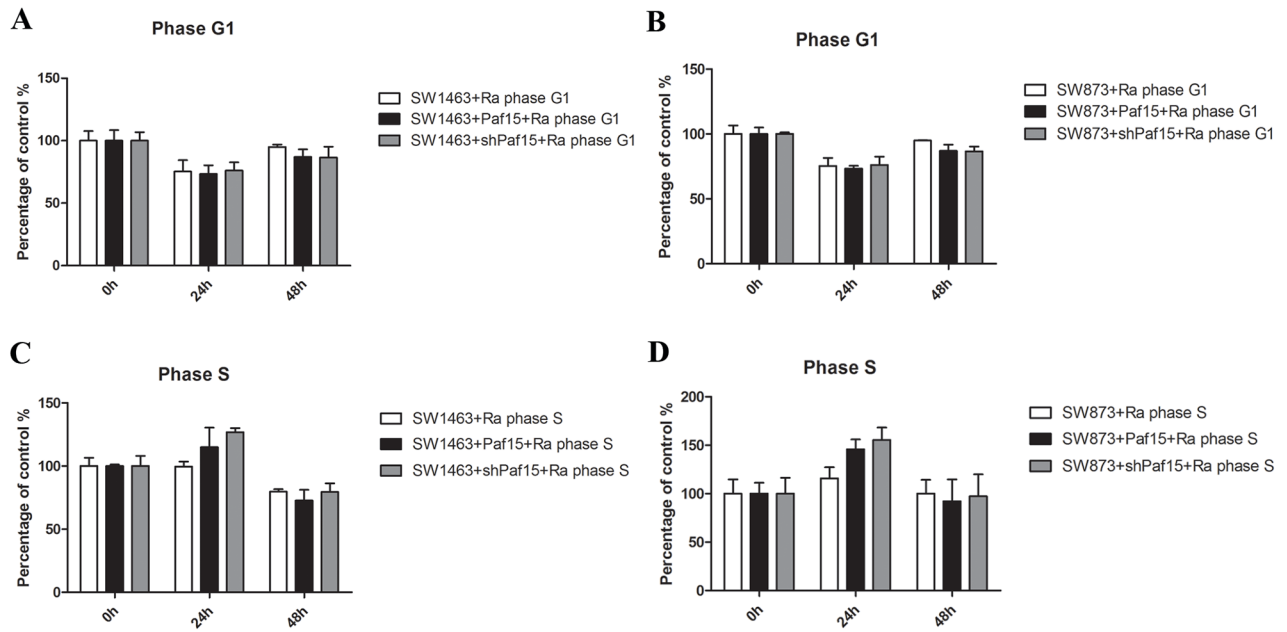
Supplementary Figure S5: Paf15 expression with different cell cycle modifiers. Cell cycle was blocked by aphidicolin in S phase or by nocodazole in G2/M phases, respectively.



Supplementary Figure S6: CCK-8 assays after irradiation for cells with varying levels of Paf15 expression. A. & B. Viability of cells expressing different Paf15 levels after irradiation. **C. & E.** Viability of Paf15-high expressing cells under irradiated and control conditions. **D. & F.** Viability of Paf15-low expressing cells under irradiated vs. control (unirradiated) conditions.



Supplementary Figure S7: Cell cycle distribution at varying Paf15 expression levels. A. & B. Percentage of cells in G1 phase. **C. & D.** Percentage of cells in S phase. **E. & F.** Percentage of cells in G2/M phase.



Supplementary Figure S8: Cell cycle after irradiation at varying Paf15 expression levels. A. & B. G1 phase cell percentages of unirradiated controls. **C. & D.** S phase cell percentages of unirradiated controls.