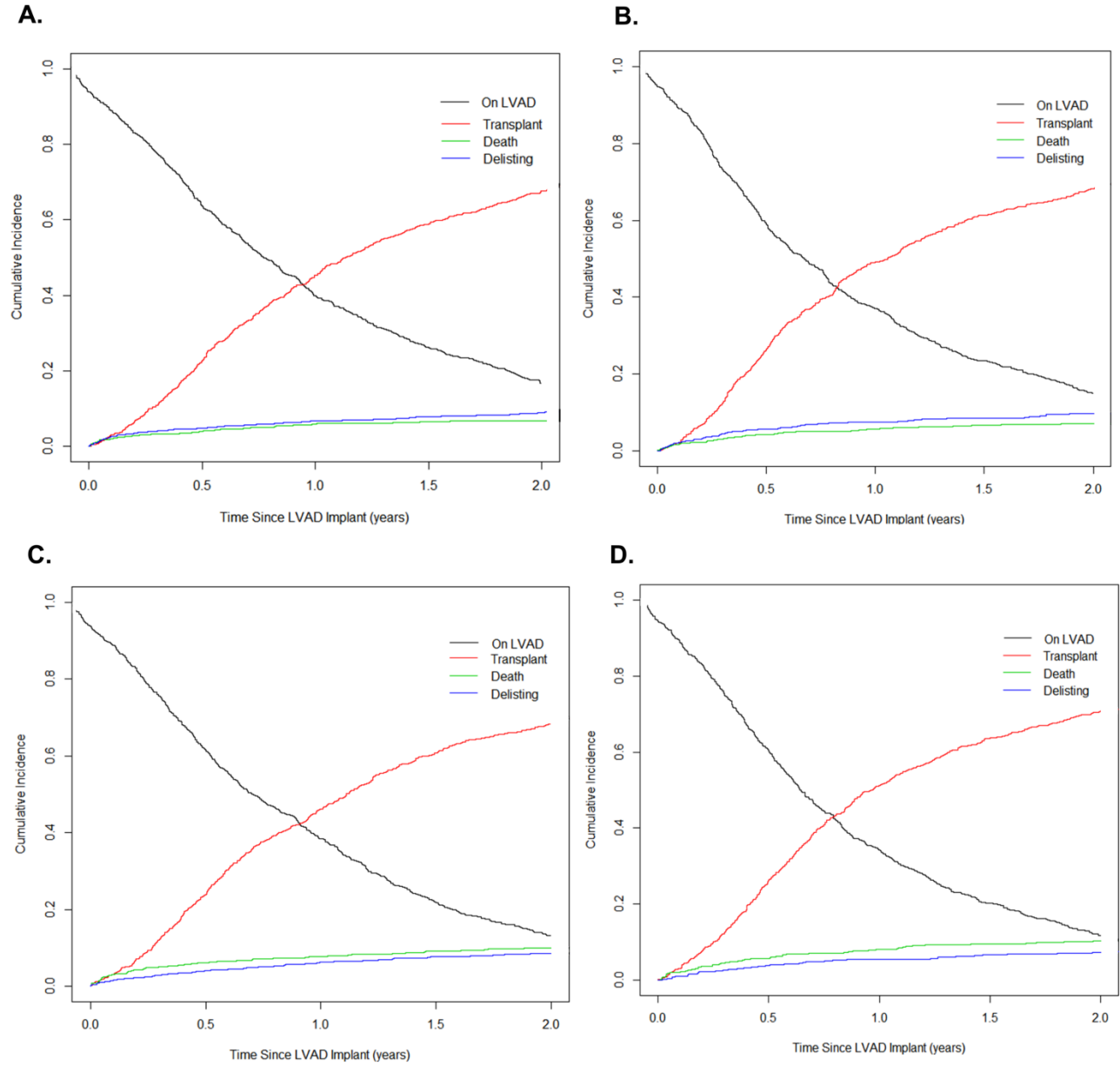


SUPPLEMENTAL MATERIAL

Supplemental Figure 1. Competing Risk Plots of Waitlist Events for the (A) bottom SES quartile, (B) second SES quartile, (C) third SES quartile, and (D) top SES quartile while on LVAD support



Supplemental Table 1. Socioeconomic Index Score Calculation

$$\text{SES Index Score} = 50 + (-0.07 * \text{crowded}) + (0.08 * \text{prop100}) + (-0.10 * \text{pct_poverty}) \\ + (0.11 * \text{hhinc100}) + (0.10 * \text{high_educ}) + (-0.11 * \text{low_educ}) + (-0.08 * \text{pct_unemp})$$

Abbreviations:

- crowded = Percentage of households containing one or more person per room
- prop100 = Median value of owner-occupied values, standardized to range from 0-100
- pct_poverty = Percentage of persons below the federally defined poverty line
- hhinc100 = Median household income, standardized to range from 0-100
- high_educ = Percentage of persons aged ≥ 25 years with at least 4 years of college
- low_educ = Percentage of persons aged ≥ 25 years with less than a 12th-grade education
- pct_unemp = Percentage of persons aged 16 years or older in the labor force who are unemployed (and actively seeking work)