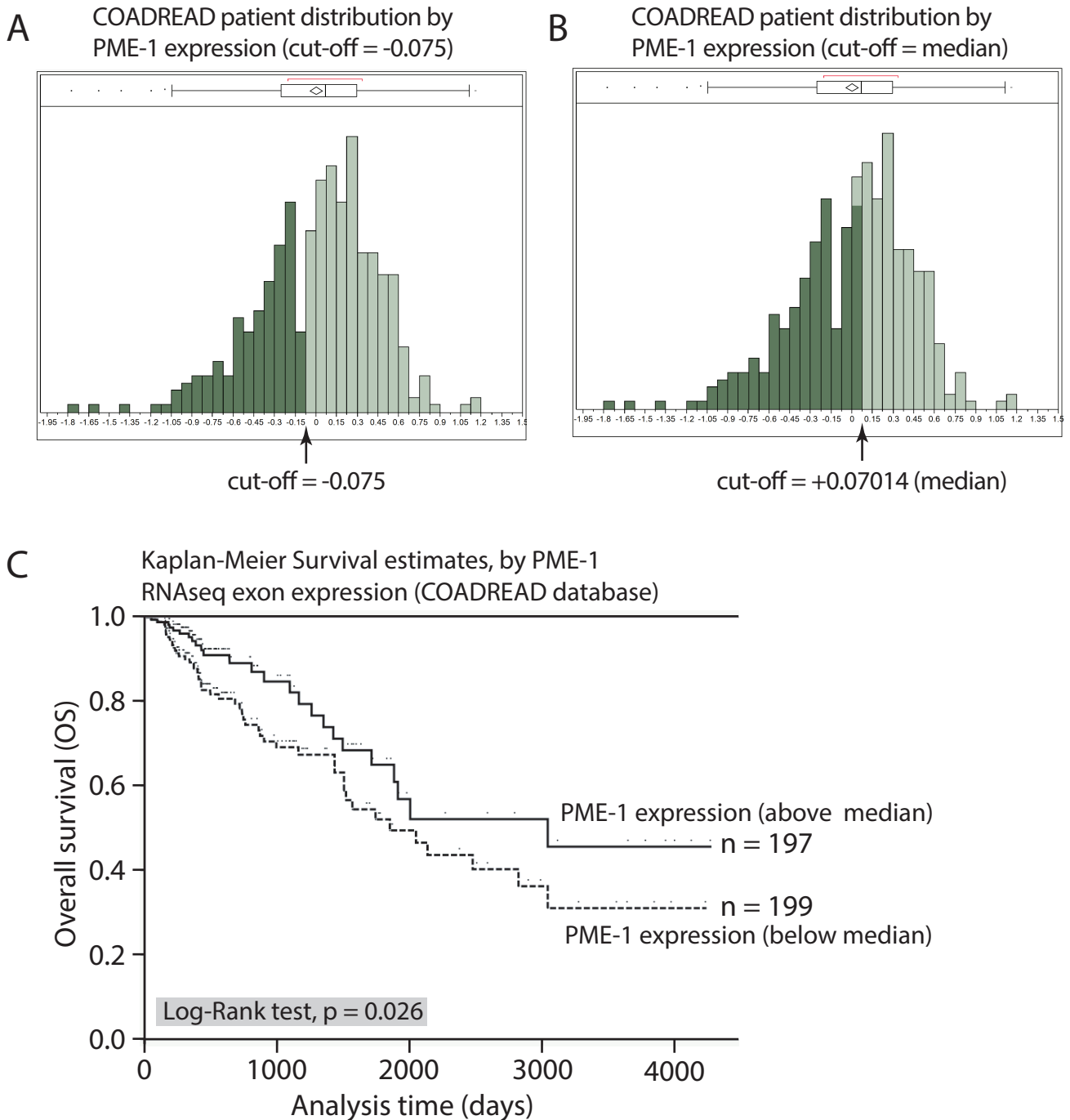


Supplementary Figure 1



Supplementary Figure 1. PME-1 mRNA expression correlates with colorectal cancer patient survival.

(A and B) Distribution plot for the TCGA colon and rectal adenocarcinoma patient (COADREAD) dataset based on the mRNA expression (RNAseq exon array) for PME-1. The patients categorized into two groups based on PME-1 expression are highlighted in different colour (dark green for low PME-1 and light green for high PME-1). Cut-off values of -0.075 **(A)** and +0.07014 or median **(B)** are marked with arrows. **(C)** Kaplan-Meier survival curve for OS by PME-1 gene expression in COADREAD patient groups based on median (+0.07014) PME-1 expression as cut-off (n = 396).