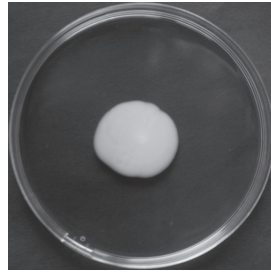
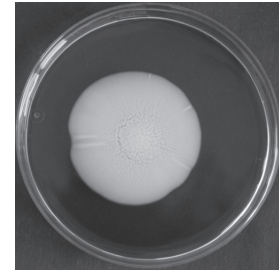


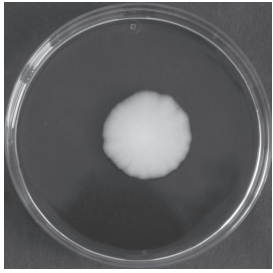
CLIB192



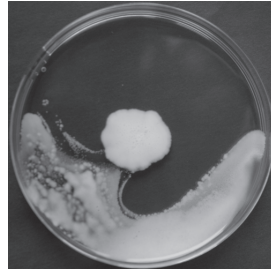
YJM421



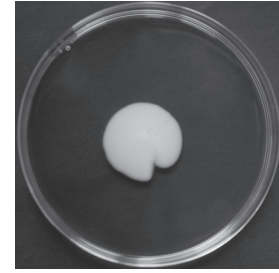
YJM678



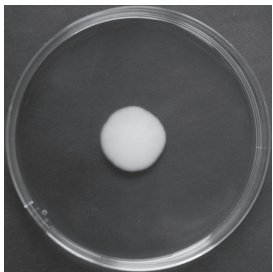
YJM145



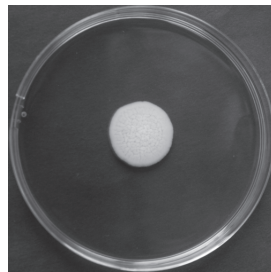
YJM428



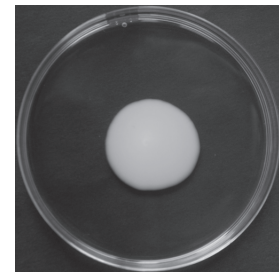
CBS7960



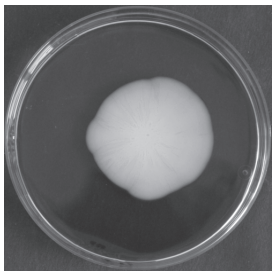
YJM280



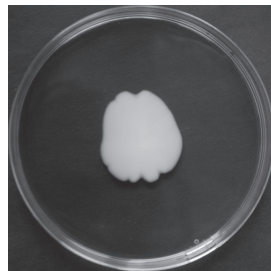
YJM434



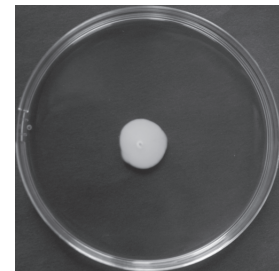
CECT10109



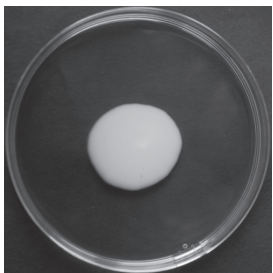
YJM320



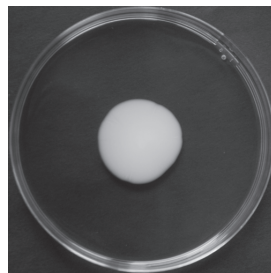
YJM436



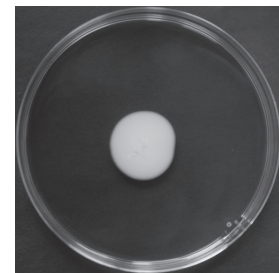
DBVPG1788



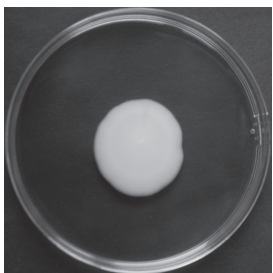
YJM326



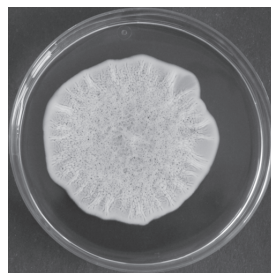
YJM454



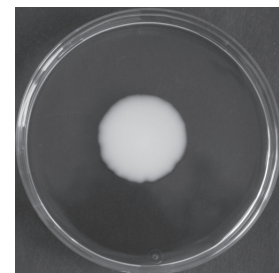
DBVPG1794



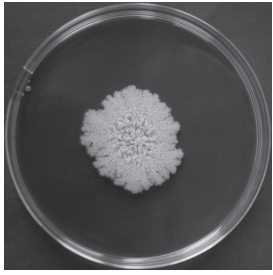
YJM413



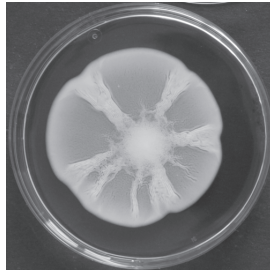
YJM653



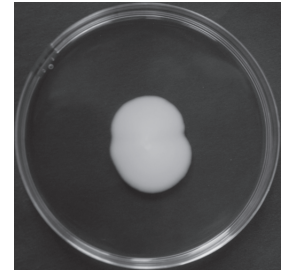
DBVPG3591



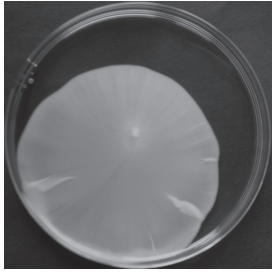
DBVPG4651



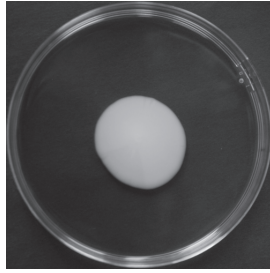
Y10



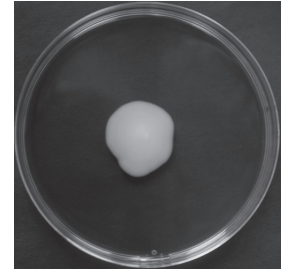
114



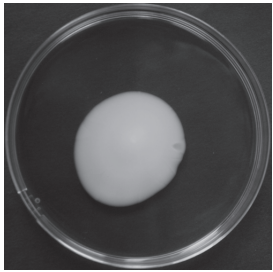
DBVPG6861



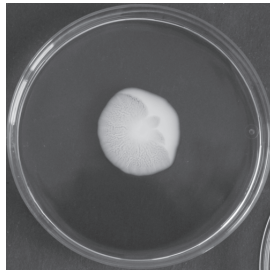
Y12



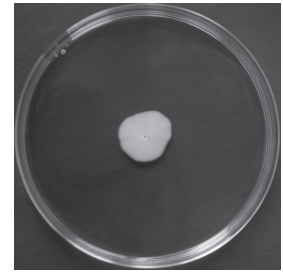
M22



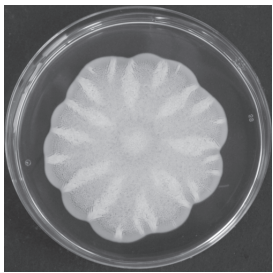
YPS1000



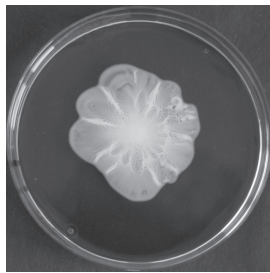
Y3



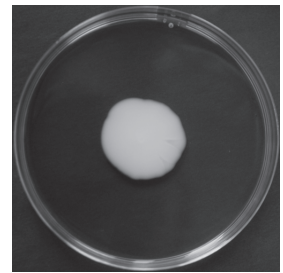
T73



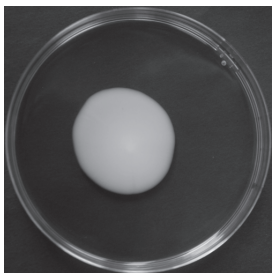
YPS163



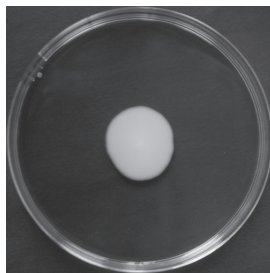
Y9



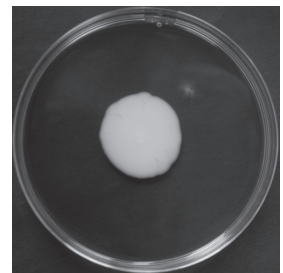
UC8



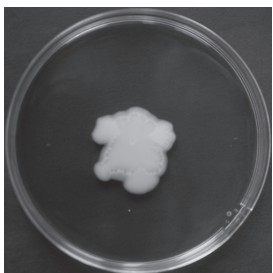
CLIB413



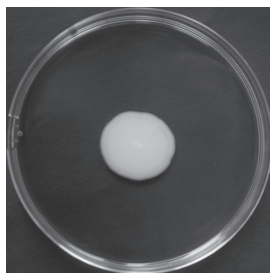
YJM269



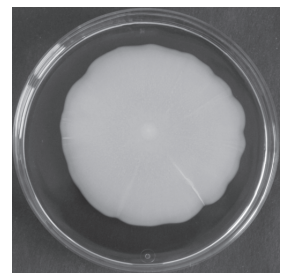
WE372



K12



CLIB219



Y55

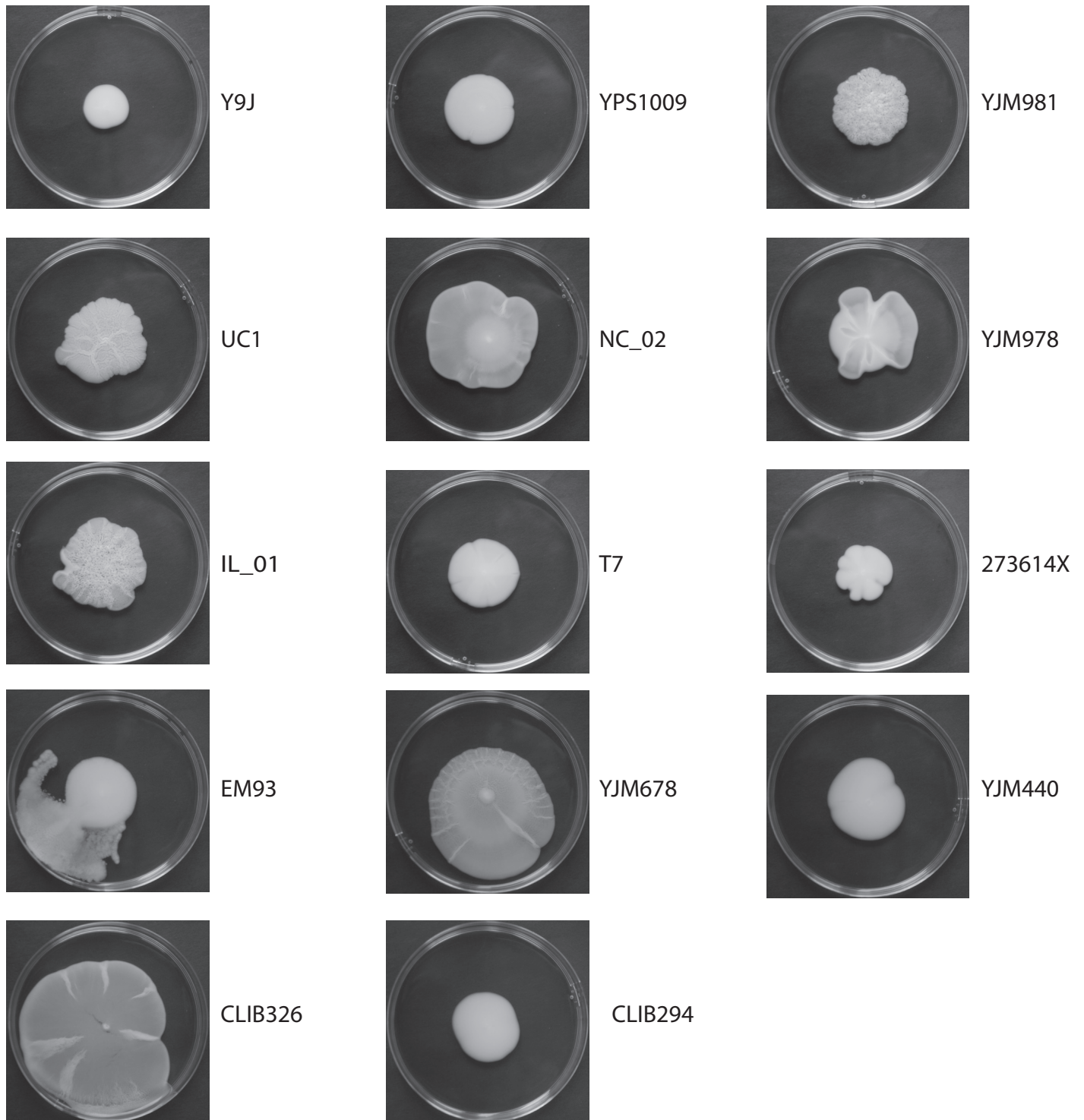


Figure S1. Morphology of natural *S. cerevisiae* isolates. Inoculations were always 500 cells in the center of semisolid complex medium plates (9 cm Ø, 0.3% agar, YPD), which were grown for seven days at room temperature. Large structured colonies (YJM653; DBVPG6861; YPS163; Y55, CLIB326; YJM678) were biofilm formers, whereas all others were wrinkled small colonies (DBVPG46651, YJM981) and smooth small colonies that did not form biofilms. NC-02, Y9, Y10 formed smaller slightly structured colonies and were recorded as smooth.