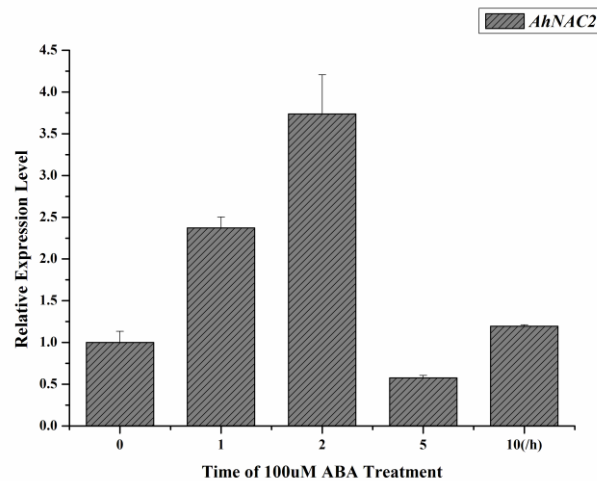


Negative feedback regulation of ABA biosynthesis in peanut (*Arachis hypogaea*): a transcription factor complex inhibits *AhNCED1* expression during water stress

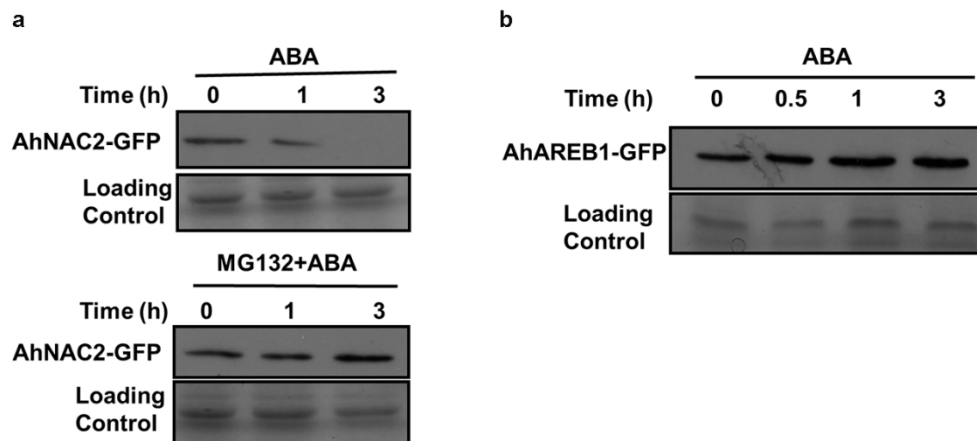
Shuai Liu¹, Meijuan Li¹, Liangchen Su¹, Kui Ge¹, Limei Li¹, Xiaoyun Li¹, Xu Liu², Ling Li^{1,*}

¹ Guangdong Provincial Key Laboratory of Biotechnology for Plant Development, School of Life Sciences, South China Normal University, Guangzhou, China.

² Molecular Analysis and Genetic Improvement Center, South China Botanical Garden, Chinese Academy of Science, Guangzhou 510650, China. Correspondence and requests for materials should be addressed to L. L. (email: liling502@126.com)



Supplementary Figure S1 Expression of *AhNAC2* in response to ABA.



Supplementary Figure S2 AhNAC2 or AhAREB1 protein accumulation is affected by ABA treatment in corresponding over-AhNAC2-GFP or over-AhAREB1-GFP transgenic *A. thaliana* lines. (a) The effect of ABA on AhNAC2-GFP protein levels with or without MG132 pretreatment in a *p35S::AhNAC2-GFP* *A. thaliana* line. (b) The effect of ABA on AhNAC2-GFP protein levels in a *p35S::AhAREB1-GFP* *A. thaliana* line.

TTCAAAAGGATGACATTATTTGACTTGAAATGGAGTTTAAGAAAAAGAAAAAGATTTTTAATTTATAATTCTAAATTAAGTTGTG
TCAAATATACCAAATGCGCTTTAATTTATGATCTTAAATATGT CACGTGGCAAGTTAAAGTTAAATGTTACAAAAAATAAATGAATA
ATTCTTTTGAACAGACTTAAAAGGAAACATGGTCATCTTTTTTAAATGGAAGGAATATTTAAATTTCTAAATTAACAAACATCCATCT
ACGATTAATGTAATTGTAATAAAATAAAATGTTTCTACAATTTTTTAAAGAAAGAATTATGTATAATTTCTTTCTTAATTTATGTAATC
TTTTATTGAAAATTTTCAAAGGATAACATTTTTAAATTTAGTATAAATTATAATTTAACCTTTTTTTTAAAAATATATGTAAGTAATTT
ATGACATAAATTGAAATTAGAGGAGTAGATTATTTACGCCCTCAACATGAGCG CGTGAGGAAGTAGGCAAAGAAACACTTTTATAGTTG
CTGCACATTTTATGAAACAATAAAAAAGTGCATCAATAGTACTGCTCACTCTGACTACTGCTTTGGCGAGTTGTTAACATGTTTTTT
TTATTAGGATGGTGCACCATAAAATTTATTTTTTTCATATTAAGATTTGAATTATGATTTTTCAGTATTCAAATTTAAACTTTTAGTTAA
AG CACGAGTGGAAATCAATTTACCTTTTAGTTATATGTTAAACATTTAATTAATTGTATAATTTATTTGTTTTTATATAAGAAGCTAGC
AAATAACAATAGATAAATTTAAAAATATTATACCTAAAAATTTGATTTATTTCTTATTCAATTCGTCCTATATACATTTTCTCAGTTCAA
TAGAATCGTCCACAAGAACCTTCGATTTCTTTAAACACATATAATCTTTAAATTTGCTCTTATTTTTTATTTTTCATAATCTATCTTAGTCTT
GTTTCATTTTGATCCTCATGCTCTTTTTTCAAATAAAGCTAAGGGGTTAAATGAAATAAGACTAAGCTAGAGTGTCAATATGAAAAACG
AGGGCATGTTAACATGACTATCTATGTATTTGGTCTCTCTTTTATTTTATTTATCTAATTTAACTTGACATGCAAAATAACACTAATAAAAT
AAATTTAGTGAATTTTAAAAATTTAAATTTGAAAAGGATAAAATATATCCGATGTTATCACTATATCTCCTAGGTAGATATAGATTGTTTT
AAAAAATTATCAATCCAAATAAATTAATGCAGTGATAAAAAAATATTACGAATAATAGCAAAGTAGTGATAGCATATATGCAAGAGAT
CATATACTTGGAATATCAAACACTACATATATAAAATGAGATGAAGGGAGTATCAACTTTTTTTTGATTTATTTAAAAGAAATGATTGAGA
ACACTCCTAAACTACGCATGAATTATTAGTTTCATTTCTGAATTATTGACAGAATAAGACACTTATTAGTTGACTAACTAGACTAAAAT
ACACCATAATTTGTAATATGAGCGAAACACCTCAAATTTCTCATTAAATTTAGGAATACTTCAATACTTTTCTCATTTTATTAATAAT
CTCATTCTCTACAAAAGTTTACGCTCATTGTTATGT CGTGTTGCATATCAATACTTGTCGTTGGTTTATTTAATTGAATTTTCGATTTATG
AGTTTGACATTAATACCCTACCATTATGTTGCTCCCAAGTGACCTTCTCACAAATACCAC CACGTGCTCTTCTTAGATGTCTAAGGT
GGACCTCGTCCCTCTTCCACATACACTCCCTTTTTTCTCAAACATCTTCTCTATTTAAACCCTCTTCTTCCCTCTCTCTCTAC
TCAACCCCAACAATTCTCTTTTCTCCCTTTTTTTTTCTCTCTTCAAAGAAGGAAAAAAAAT

Supplementary Figure S3 The bioinformatics analysis of the 2000-bp upstream region of NCED1 in tomato. The

yellow highlights indicates ABRE *cis*-acting elements and green indicates *cis*-acting core NACRE elements.

Supplemental Table 1 Primers used in the paper

Name	Sequence
Actin QF	GATTGGAATGGAAGCTGCTG
Actin QR	CGGTCAGCAATACCAGGGAA
adh3F QR	GACGCTTGGCGAGATCAACA
adh3F QR	AACCGGACAACCACCACATG
pN1-F	GCAAGCGTGTGGGGTAGTAA
pN1-R	GAGTGAGAGTTGAGAGTGTC
pN2-F	CAACAAACAAACCAAAATGC
pN2-R	TAGGAGGGGTGTGAAGAAGA
pN3-F	TAATAAAGCAAAGAACTCAATTTA
pN3-R	TGAGAAAGTTGAGGGATGAGGGGAG
pN4-F	CCTTCCTTCTCTTGTATTCCA
pN4-R	TGATACACTGCCACGAACACTCTAC
pN5-F	TCTTGATCACTTATTGGCAATCCAAC
pN5-R	TTGATTGAAGAATAGTAATGGGTGGT
pN6-F	ACTCACAACCACCTCTC
pN6-R	GCAAGTAAGTAGCAGGGG
AhNCED1 QF	TTACCTGTGGGATTGTTTGC
AhNCED1 QR	ACATGAGCCTCTACTTCTGC

Full-length gels and blots

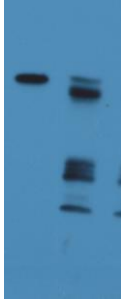


Figure 2b Anti-GST



Figure 2b Anti-AhNAC2

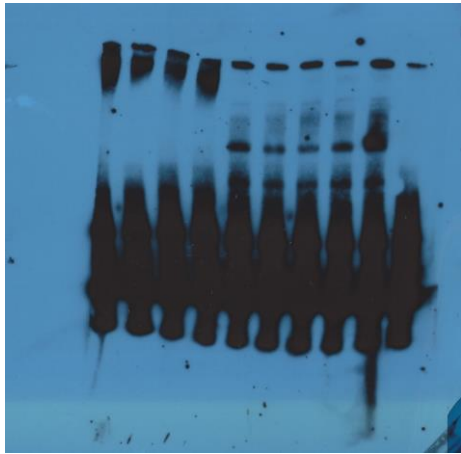


Figure 4b

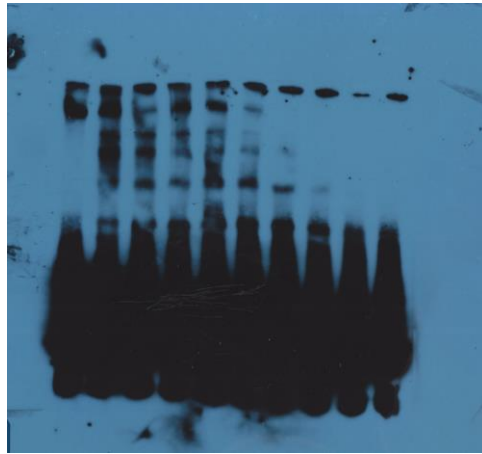


Figure 4c

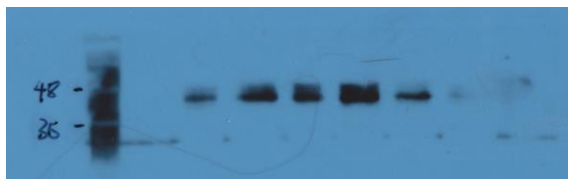


Figure 5b AhAREB1

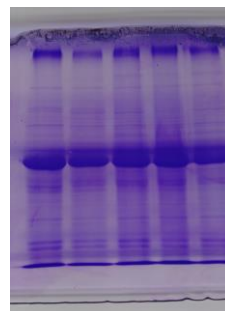


Figure 5b AhAREB1 loading Control



Figure 5b AhNAC2

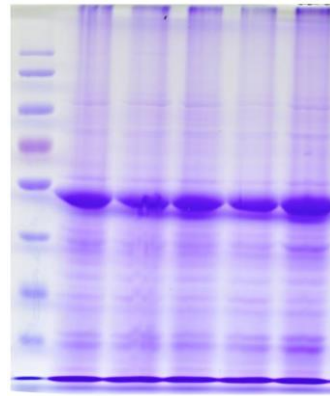


Figure 5b AhNAC2 loading Control

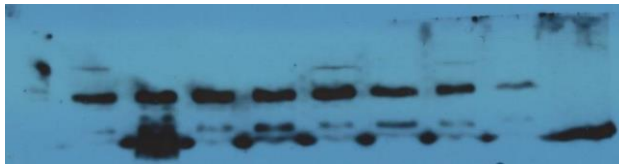


Figure 6a AhNAC2

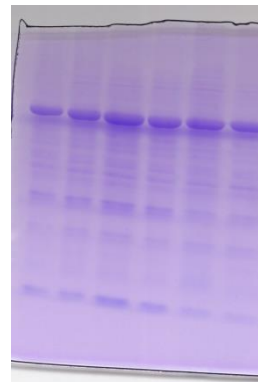


Figure 6a AhNAC2 loading Control

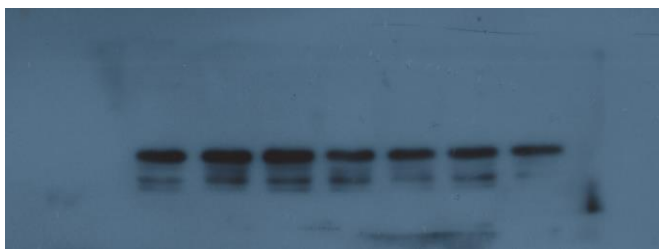


Figure 6b AhNAC2

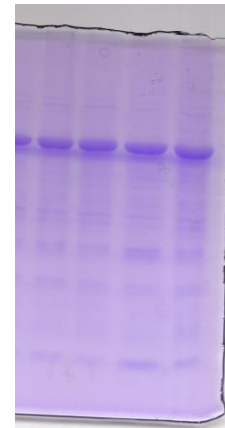


Figure 6b AhNAC2 loading Control

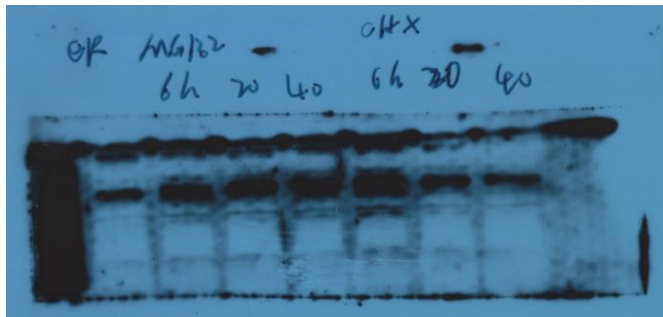


Figure 6c AhNAC2

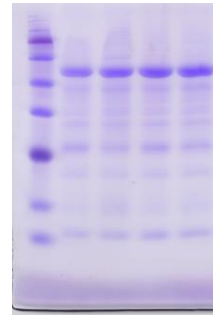
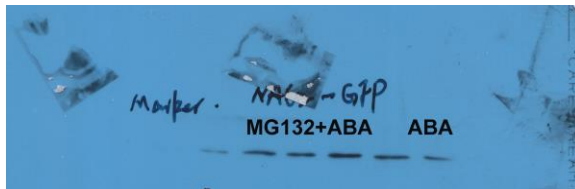
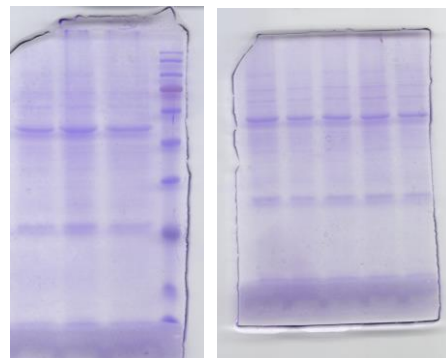


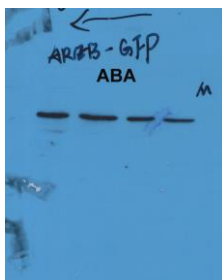
Figure 6c AhNAC2 loading Control



Supplementary Figure S2a



Supplementary Figure S2a loading control



Supplementary Figure S2b



Supplementary Figure S2a loading control