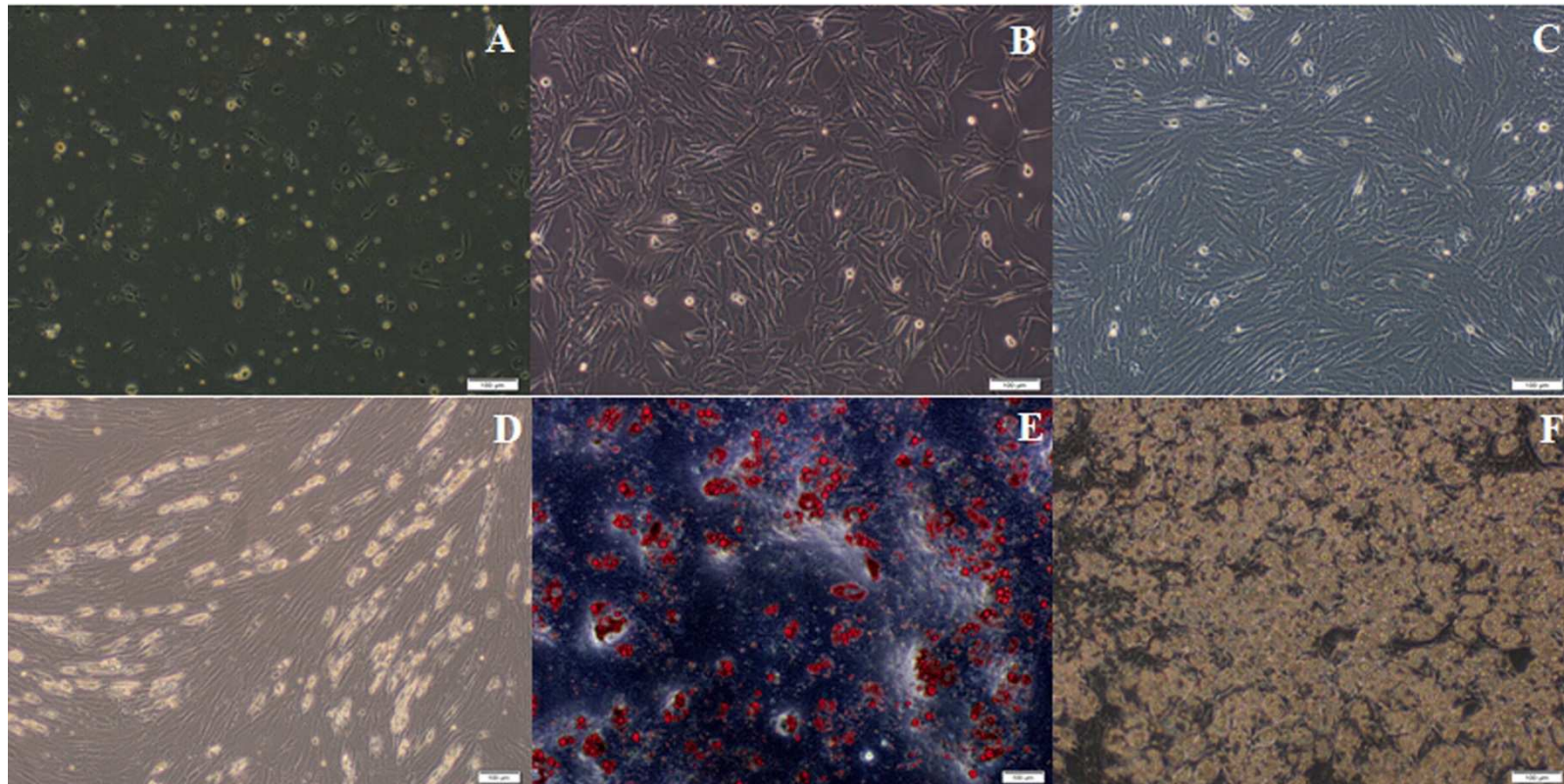
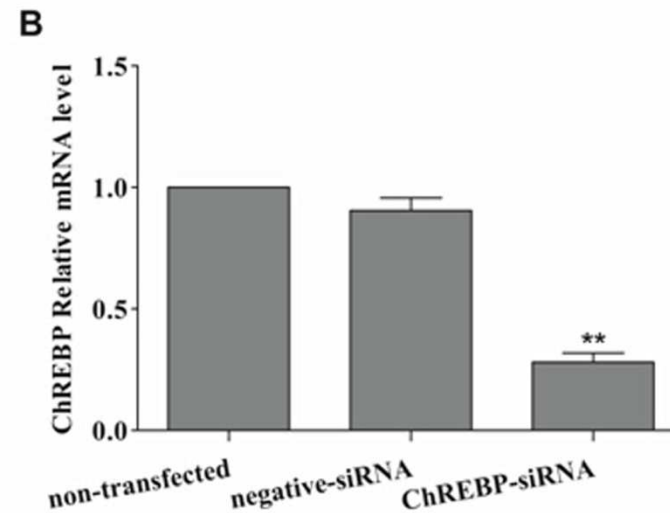
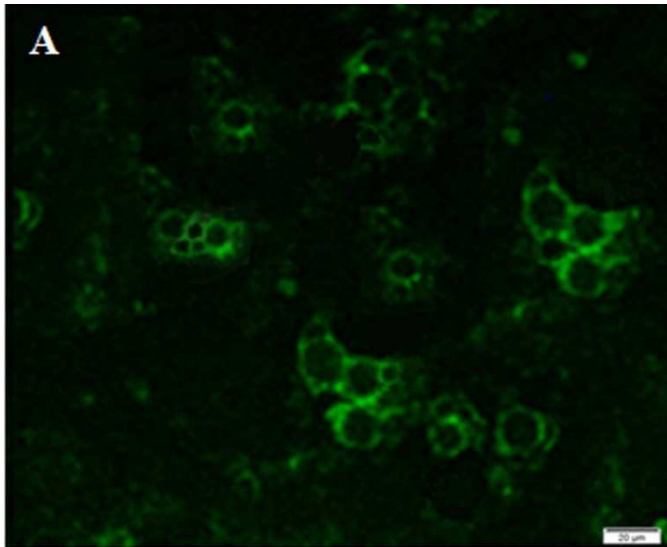


**Supplementary Fig.1** The morphology change of primary cultured porcine adipocytes. A. The cells are seeded for 24h. B. The cells start to confluence on d 3. C. the cells grew to confluent monolayer at d 8. D. adipocytes cultured for 5 days after inducing. E. adipocytes stained by Oil Red O. F. adipocytes cultured for 10 days after inducing.



**Supplementary Fig.2** The transfection of ChREBP-siRNA expression plasmid on porcine adipocytes. A. Cell morphology under fluorescence microscope after transfection of pcDNA6.2-GW/EmGFP-*ChREBP*. A representative is shown (n=3). B. The expression levels of *ChREBP* mRNA in porcine transfected adipocytes. ChREBP-siRNA indicates the adipocytes transfected with pcDNA6.2-GW/EmGFP- *ChREBP* siRNA expression plasmid; negative-siRNA indicates the adipocytes transfected with control siRNA. and non-transfected indicates the unperturbed adipocytes. All data are means±SEM. \*\* means significant difference  $P<0.01$ .



**Supplementary Fig.3** Western blot analysis demonstrates SREBP-1c expression. A. 10 mmol/L Fatostatin treatment reduced the level of SREBP-1c protein expressed in porcine adipocytes. B. Quantification of the data using ImageJ. \*\* means significant difference  $P < 0.01$  (n=3).

