

Supplementary Information

ECM proteins in a microporous scaffold influence hepatocyte morphology, function, and gene expression

Yan Wang^{1,2,±}, Myung Hee Kim^{1,2,±}, Hitomi Shirahama^{1,2}, Jae Ho Lee^{1,2}, Soon Seng Ng^{1,2},
Jeffrey S. Glenn^{3,4} & Nam-Joon Cho^{1,2,5,*}

¹School of Materials Science and Engineering, Nanyang Technological University, 50 Nanyang Avenue 639798, Singapore

²Centre for Biomimetic Sensor Science, Nanyang Technological University, 50 Nanyang Drive 637553, Singapore

³Division of Gastroenterology and Hepatology, Department of Medicine, Stanford University School of Medicine, Palo Alto, California, United States of America

⁴Department of Microbiology and Immunology, Stanford University School of Medicine, Palo Alto, California, United States of America

⁵School of Chemical and Biomedical Engineering, Nanyang Technological University, 62 Nanyang Avenue 637459, Singapore

[±]These authors contributed equally to this work.

*Correspondence and requests for materials should be addressed to N.J.C. (email:

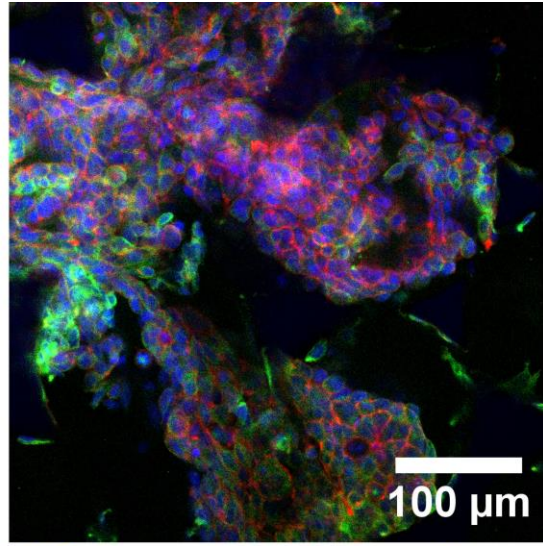
njcho@ntu.edu.sg)

Supplementary Figure 1. High quality figures of the day 14 merged images of Huh-7.5 cells with immunofluorescence staining for CYP3A4 (green) and co-stained for F-actin (red) and nuclei (blue).

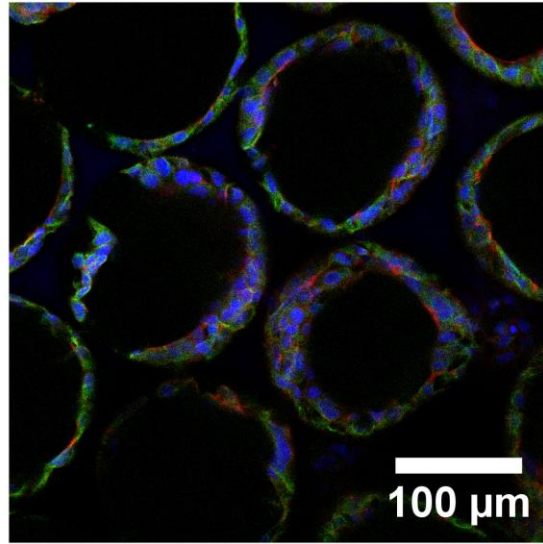
Supplementary Figure 2. High quality figures of the day 14 merged images of Huh-7.5 cells with immunofluorescence staining for E-cadherin (green) and co-stained for F-actin (red) and nuclei (blue).

Supplementary Figure 1

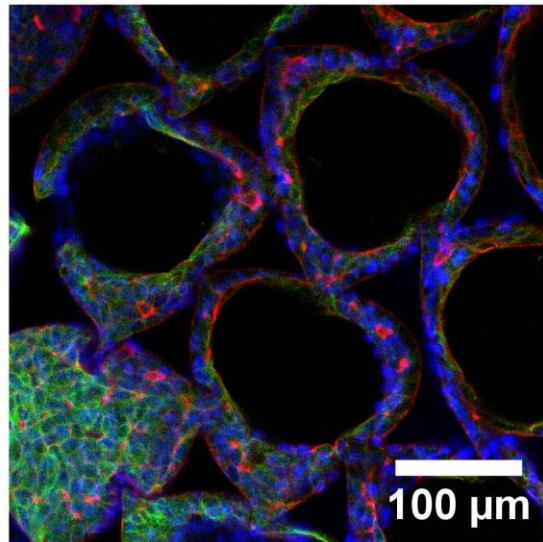
Bare ICC



Collagen ICC

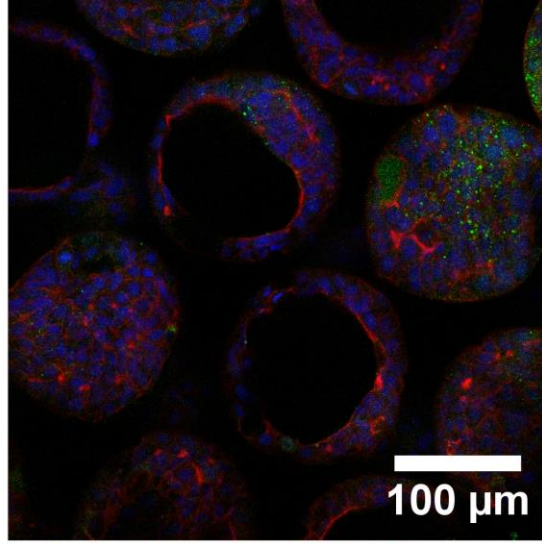


Fibronectin ICC

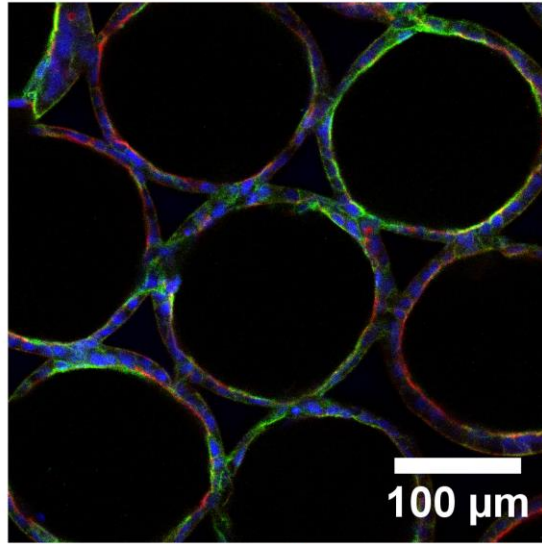


Supplementary Figure 2

Bare ICC



Collagen ICC



Fibronectin ICC

