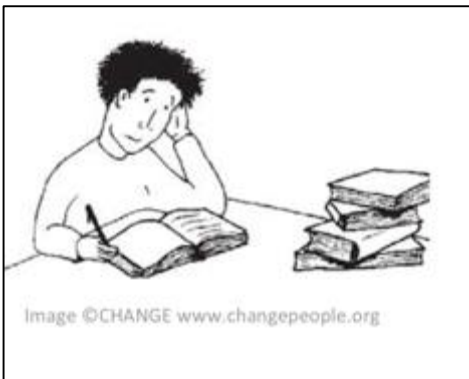
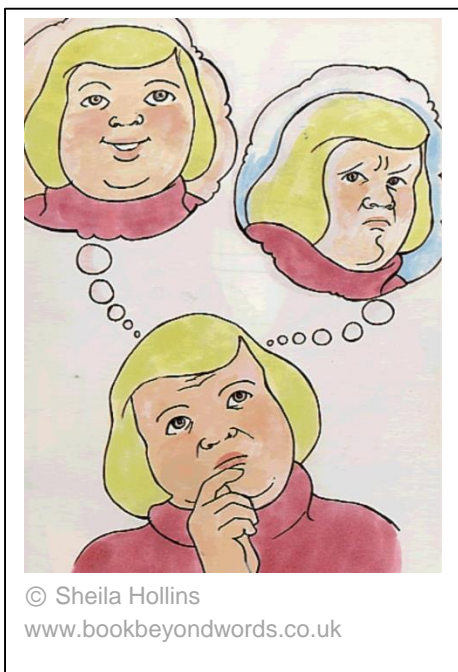


## Information about a study in this epilepsy clinic

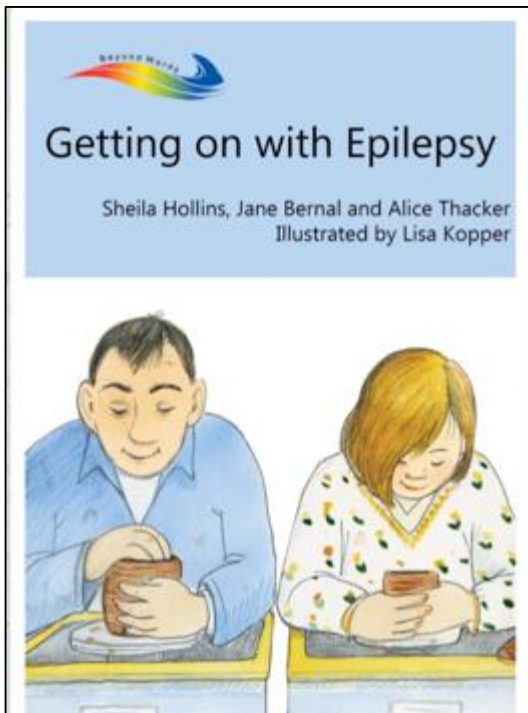
Study title: WIELD (wordless intervention for epilepsy in learning disabilities)



- Hello, we are researchers and doctors doing a study.
- A researcher is a person who finds out new things.
- A study is a way of finding things out.



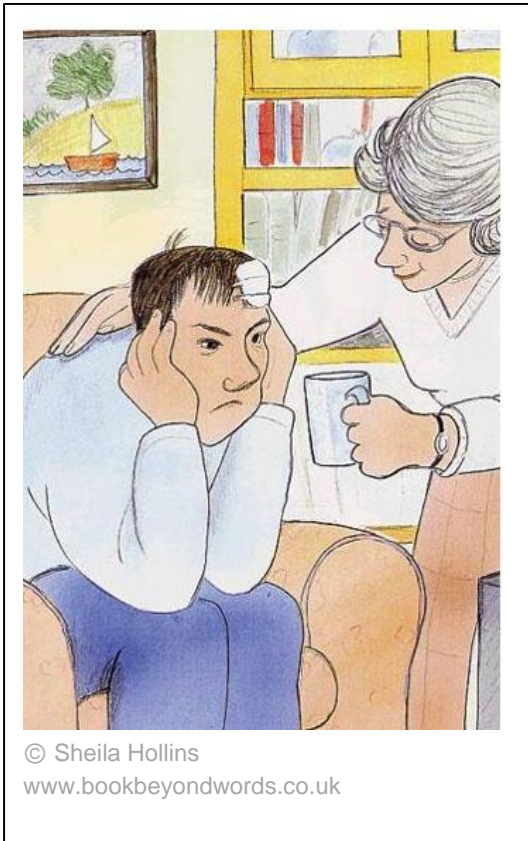
- **Would you like to be in the study?**
- This leaflet tells you about the study. It will help you decide if you want to be in the study.



## What is the study about?

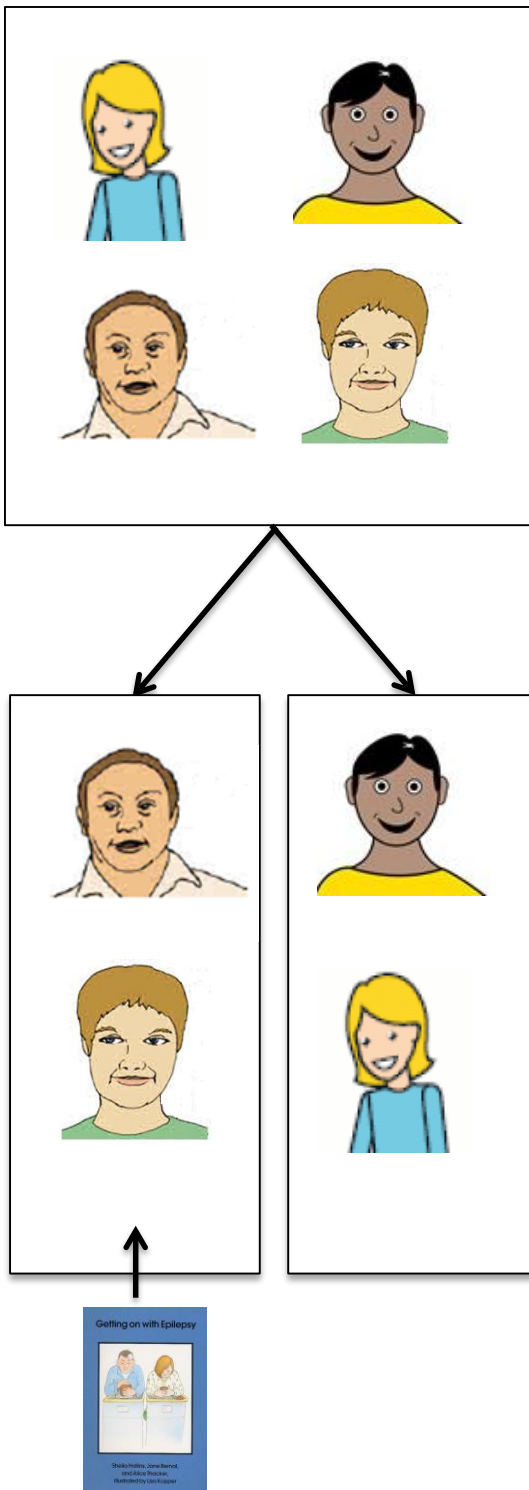
- The study is about epilepsy.
- We want to find out if a book with pictures can help people with learning disabilities to understand and manage their epilepsy.
- We are doing a small study with a small number of people. It will help us decide if a larger study is possible.
- The larger study will tell us if the book is helpful for people with learning disabilities who have epilepsy.





## Why are we doing this study?

- We know that people with learning disabilities can find it hard to understand and manage their epilepsy.
- We want to know if a book with pictures is helpful.



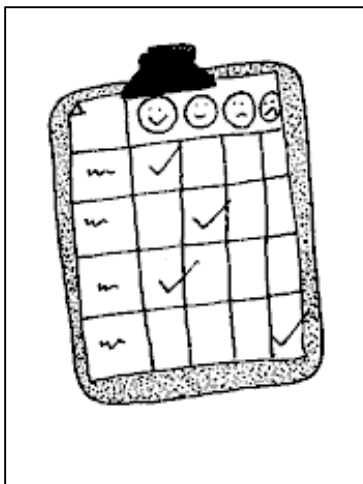
## What happens in the study?

- We want to know about you and your epilepsy.
- We will put people into two groups by chance (randomly).
- In one group, people will be given a book, to use with the nurse and at home.
- In the other group, people will not be given a book to start with. They can use the book later.
- We want to know what you think about using the book (if we give you one).



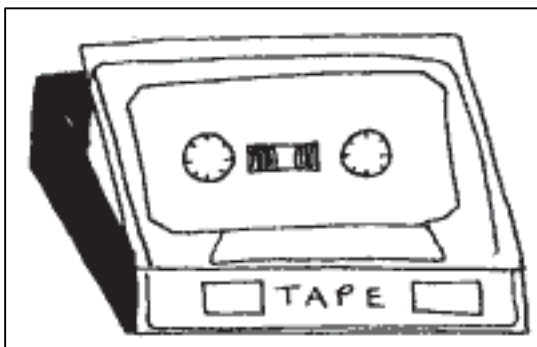
- We will also give you a questionnaire. We want you to answer the same questionnaire 4 times.

- You can do this with your carer or family.



- We may also ask you some questions in an interview.

- We will show you some pictures to help you think about the questions.



- We may record what you say on a tape.

- If you don't mind, we will use a tape recorder. It will help us remember what you have said.



## What will we do after the study?



- Afterwards, what you have told us will be put in a computer.
- We will not write down your names. We will use pretend names instead.



- Everything you say to us is private.
- We will tell others what we found out. But we won't tell them who said it.



- We will also write in magazines about what we have found out.



### Can someone come with me?

- Yes, your family or carer can come to the epilepsy clinic with you.

### Do I have to be in the study?



- Being in the study is up to you.
- It is your choice.
- If you do not want to do it, that's ok.
  
- You can stop doing the study if you do not like it. You can stop at any time.
  
- Nobody will be annoyed if you say no or if you stop.



## What will happen now?

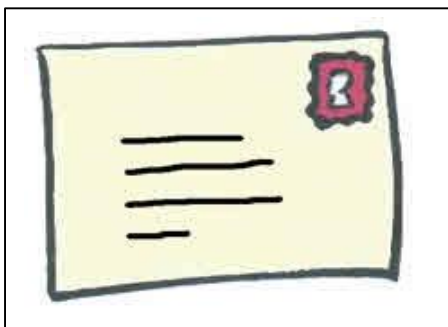
- You can call or write to us to ask questions about the study.
- If you want to know more about the study, you or your carer or family can call Silvana. Silvana is a researcher.



- Her phone number is:  
**01707 284494**



- Or you can send Silvana an email:  
**s.mengoni@herts.ac.uk**



- Or you can write to Silvana.

Her address is:

Silvana Mengoni

CLiCIR

School of Life and Medical Sciences

University of Hertfordshire

College Lane Campus

Hatfield AL10 9AB