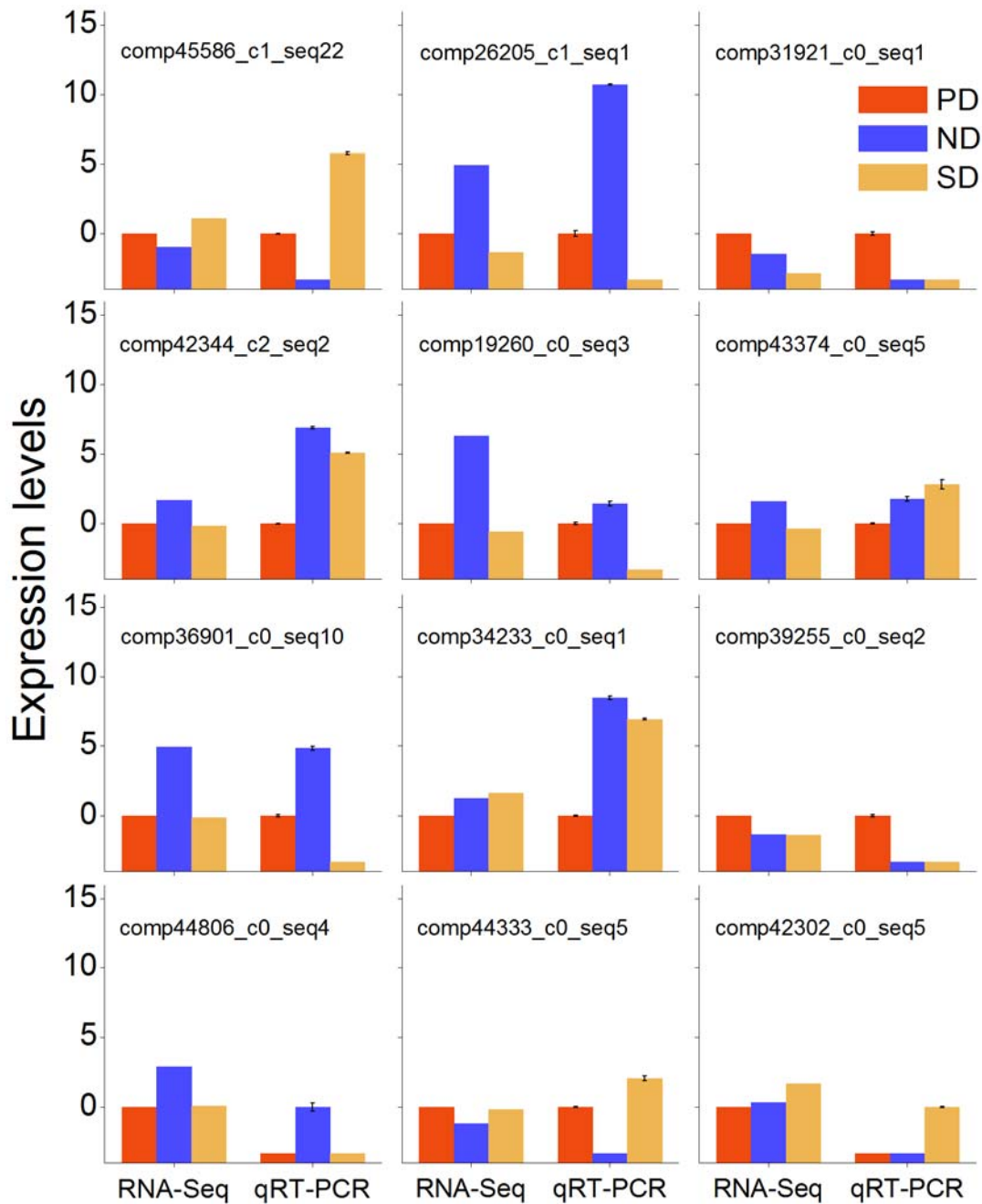


1 **Supplemental Figure S5**



2

3 **Fig. S5 Comparison of gene expression levels detected by RNA-Seq versus qRT-PCR.**

4 Values of expression levels (RPKM) by RNA-seq were standardized, with the value for primary
 5 dormant seeds set to 1. Expression levels of genes detected by qRT-PCR were calculated using
 6 the $2^{-\Delta\Delta C_t}$ method. All data were \log_2 transformed. PD, primary dormant seeds; ND, non-dormant
 7 seeds; SD, secondary dormant seeds.