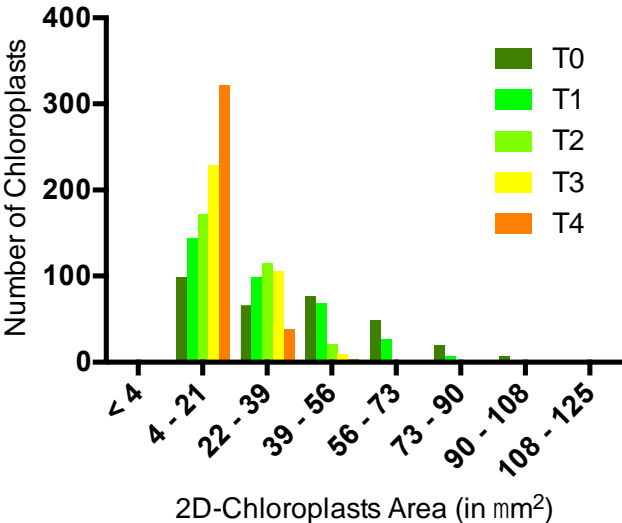
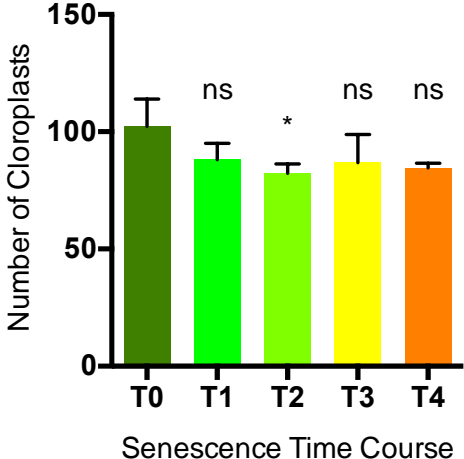


Supplemental Figure 1.

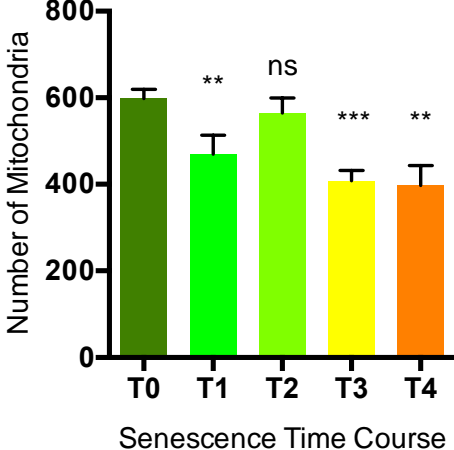
A



B



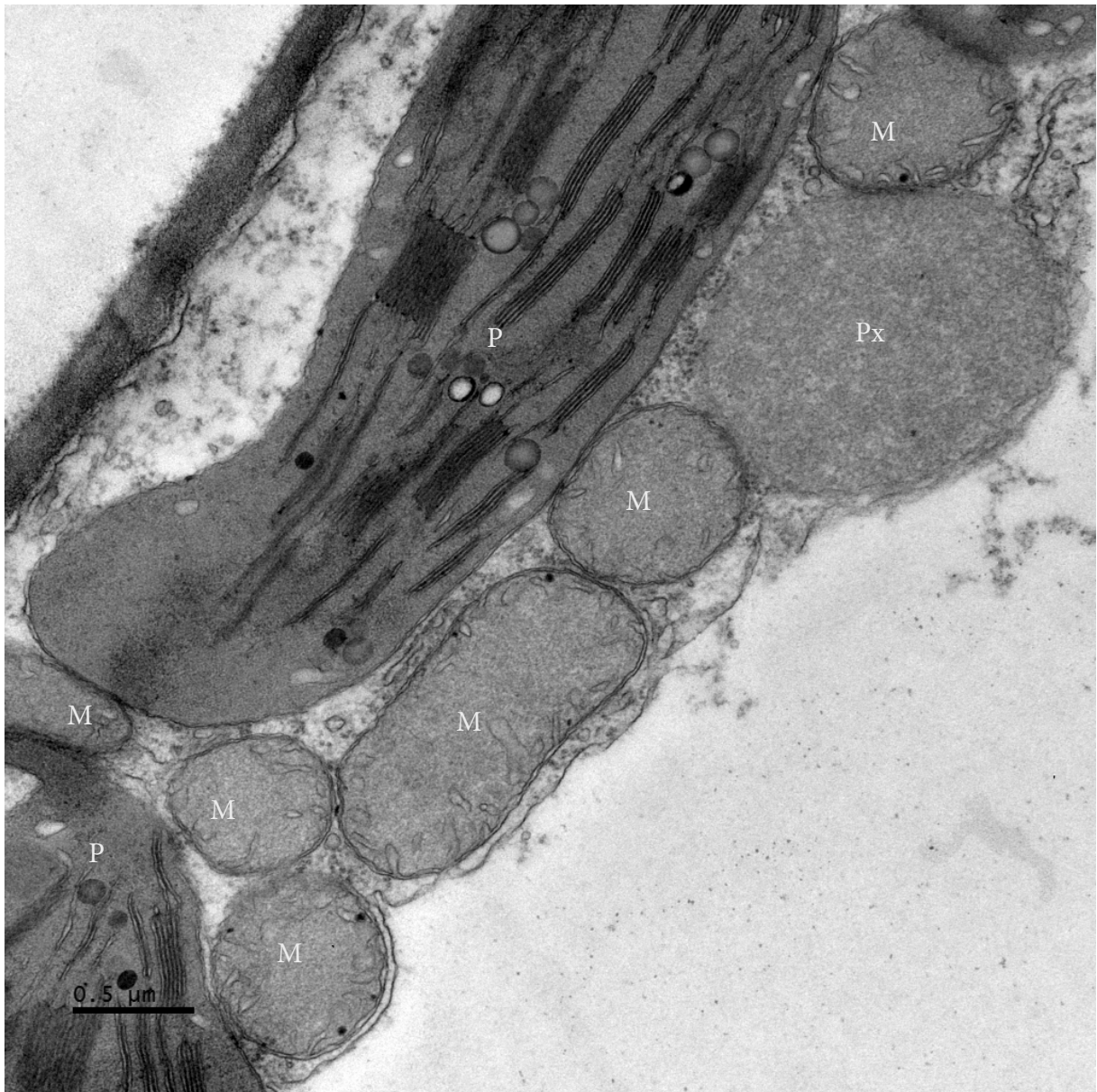
C



Supplemental Figure 2.

Electron microscopy. P: plastid, M: mitochondrion, Px: peroxisome.

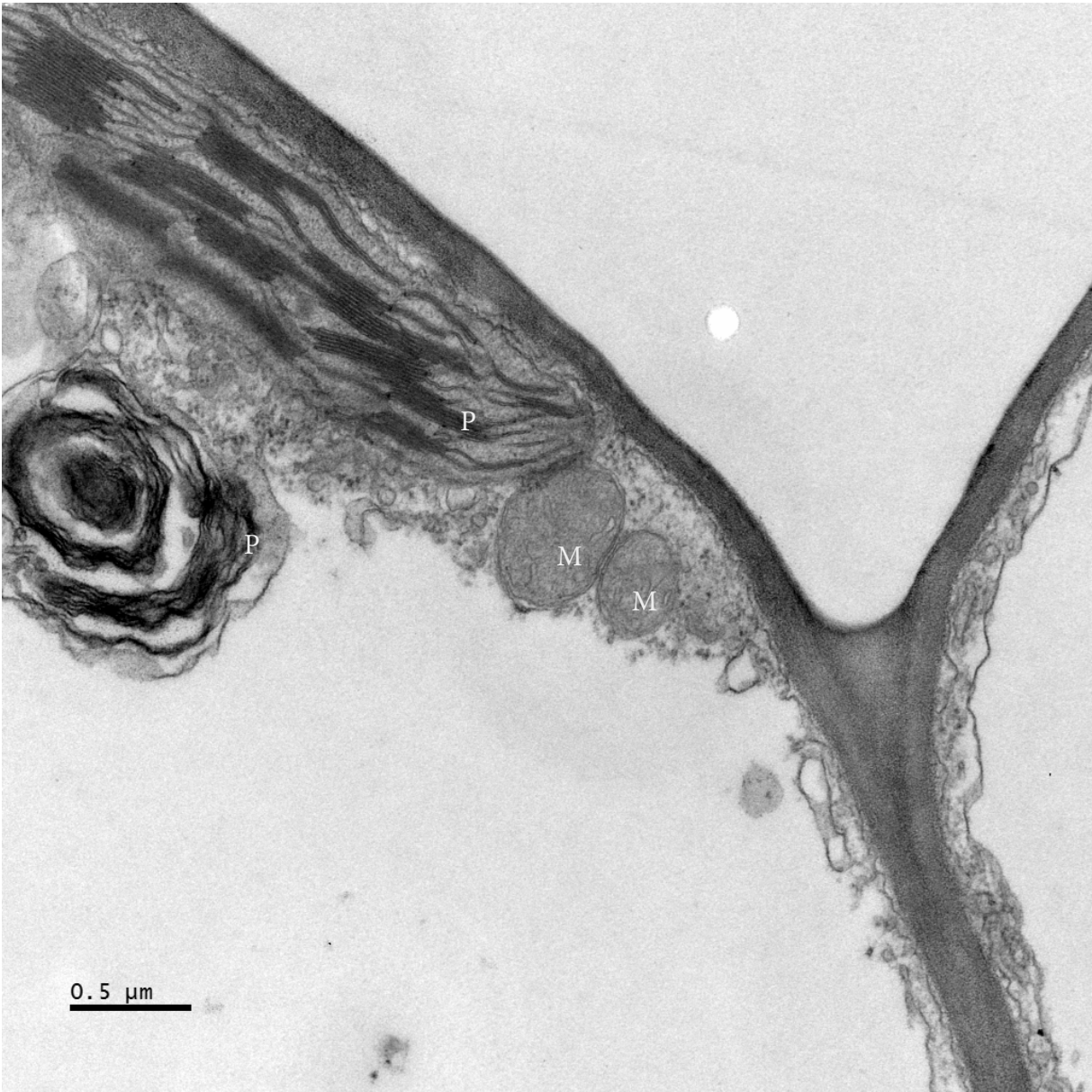
T0: 0% chlorophyll degraded (magnification x30 000)



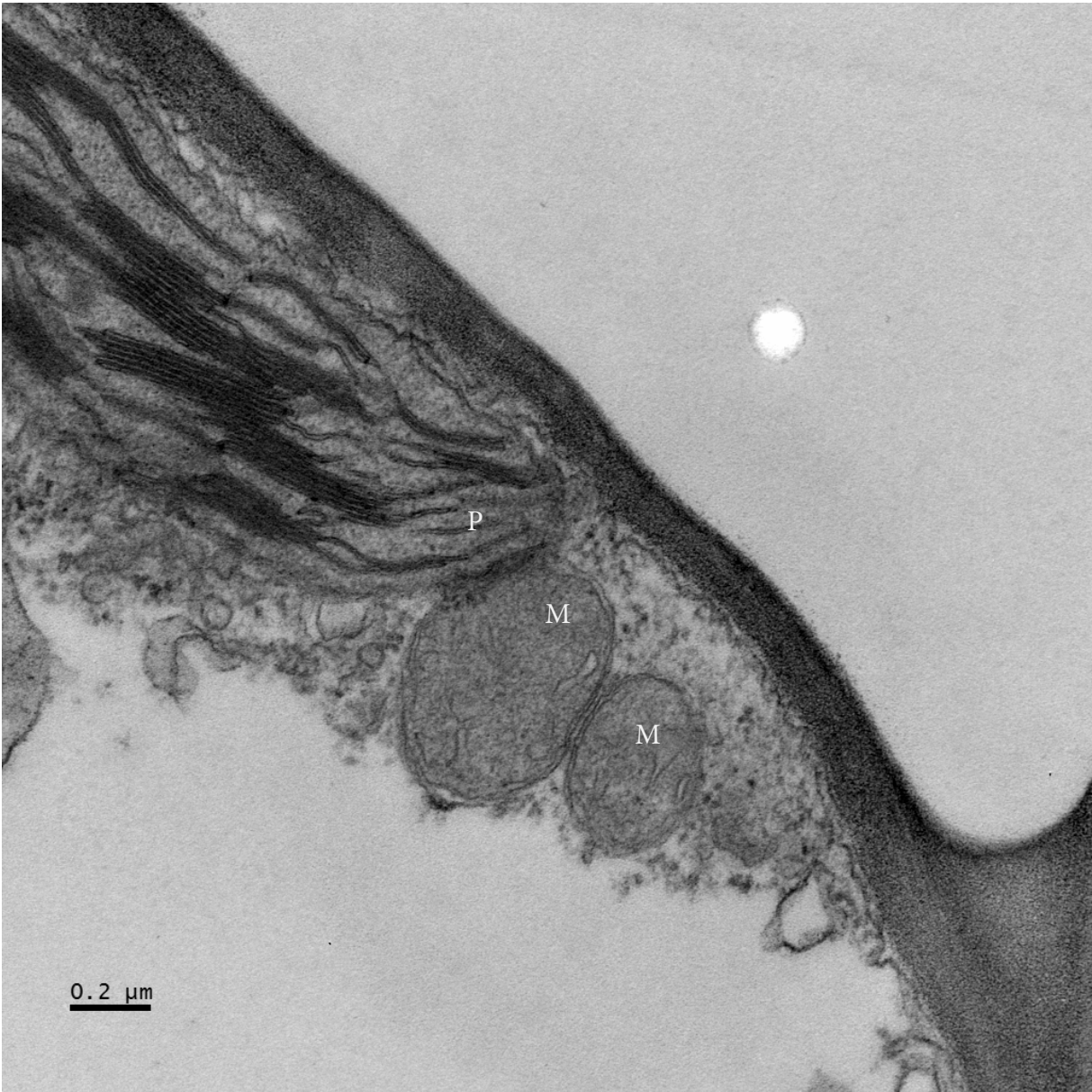
T0: 0% chlorophyll degraded (magnification x50 000)



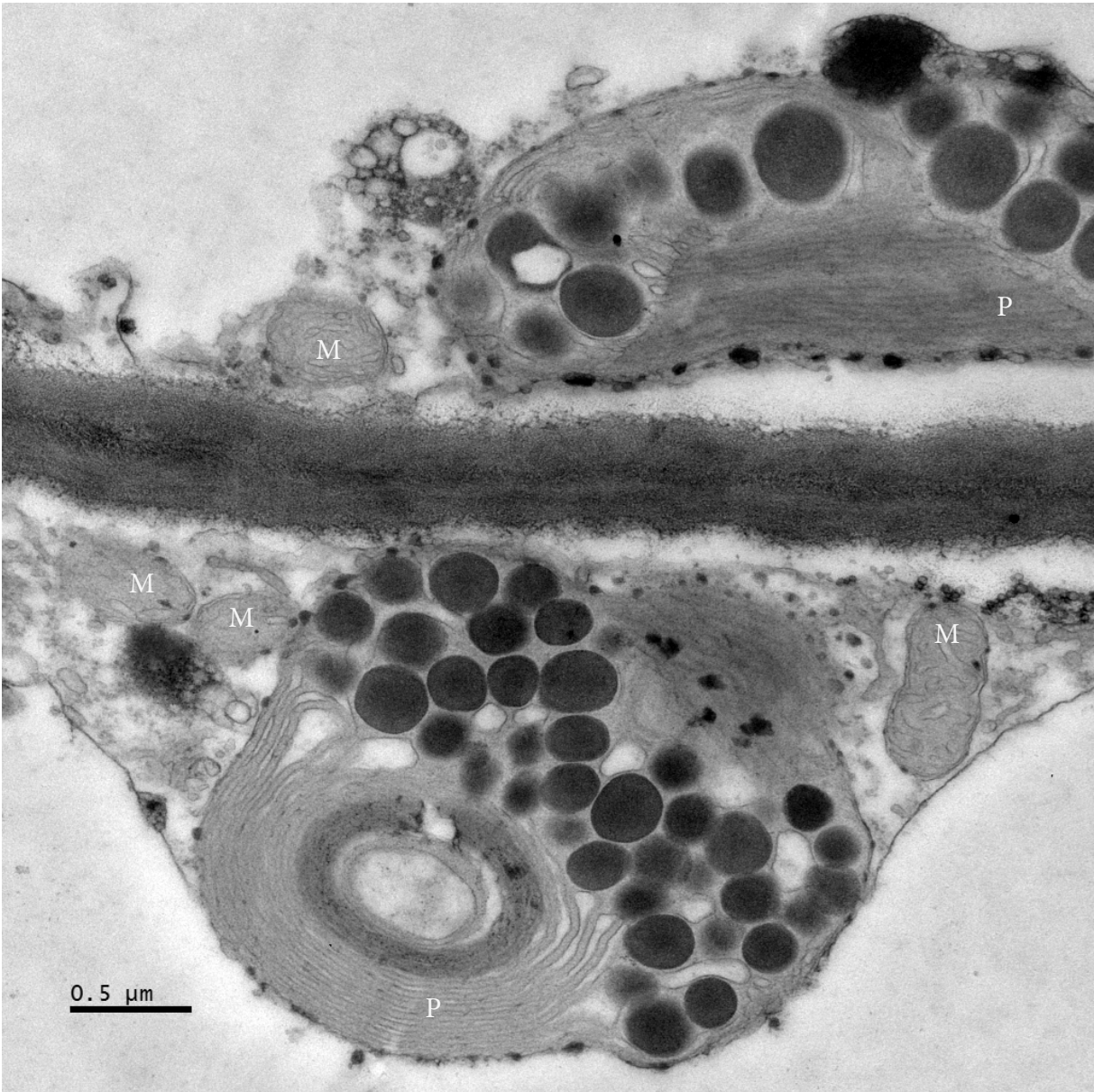
T2: 40-60% chlorophyll degraded (magnification x30 000)



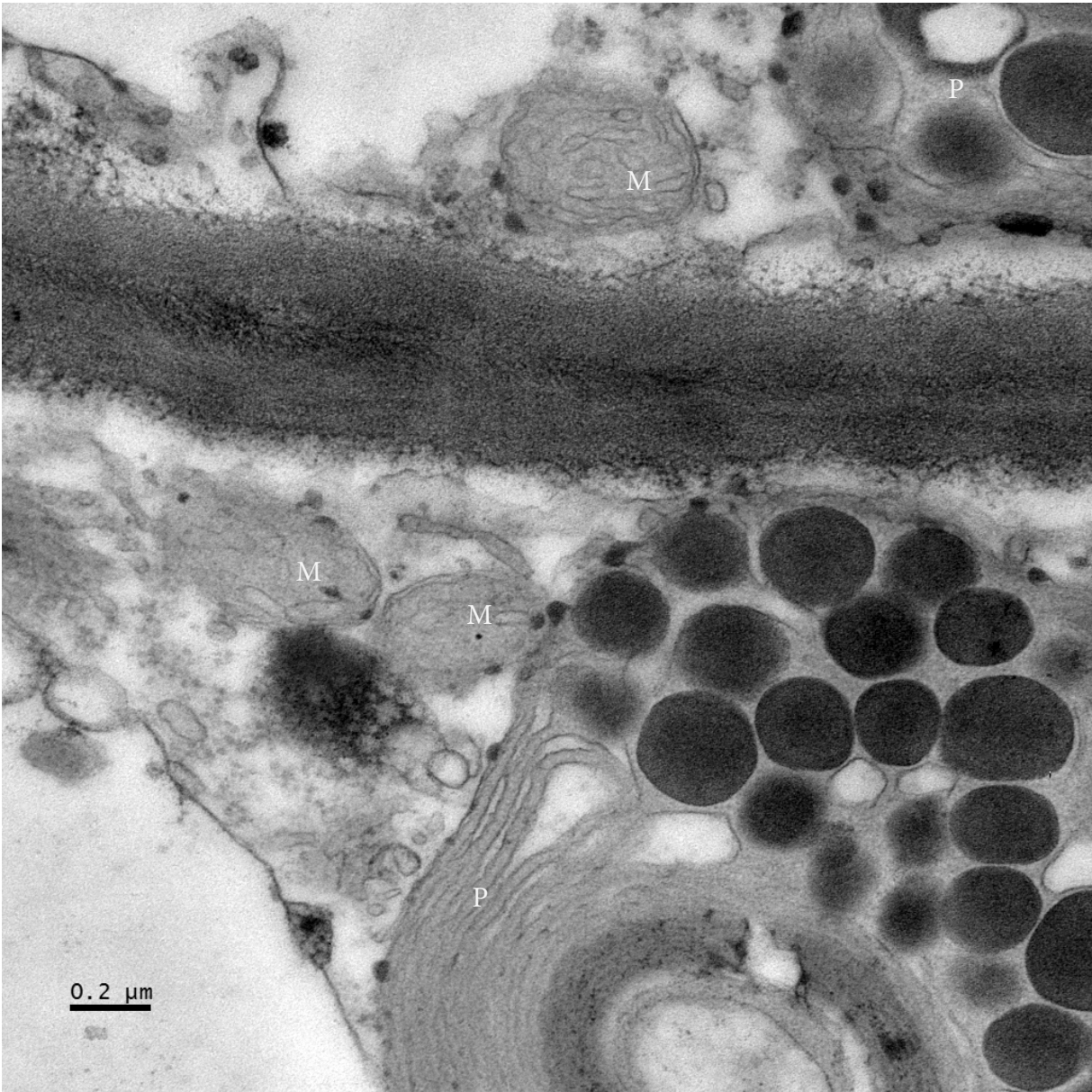
T2: 40-60% chlorophyll degraded (magnification x50 000)



T4: >80% chlorophyll degraded (magnification x30 000)

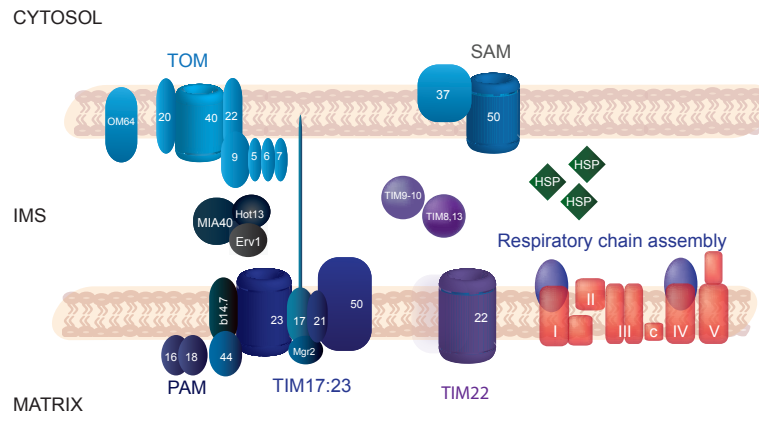


T4: >80% chlorophyll degraded (magnification x50 000)

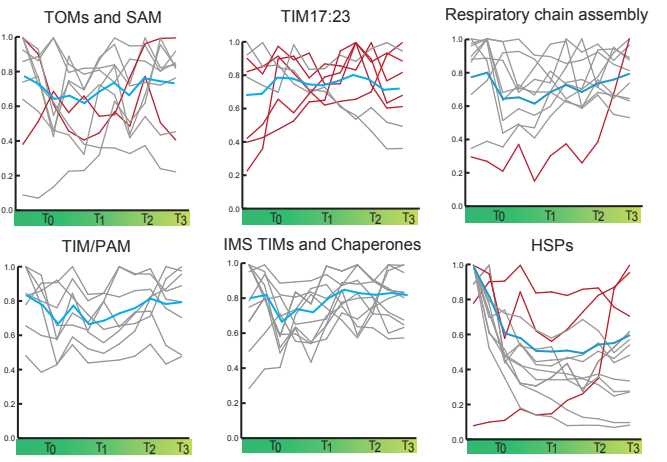


Supplemental Figure 3.

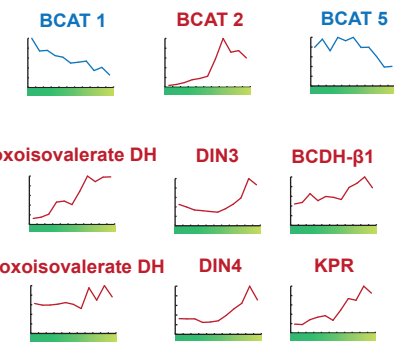
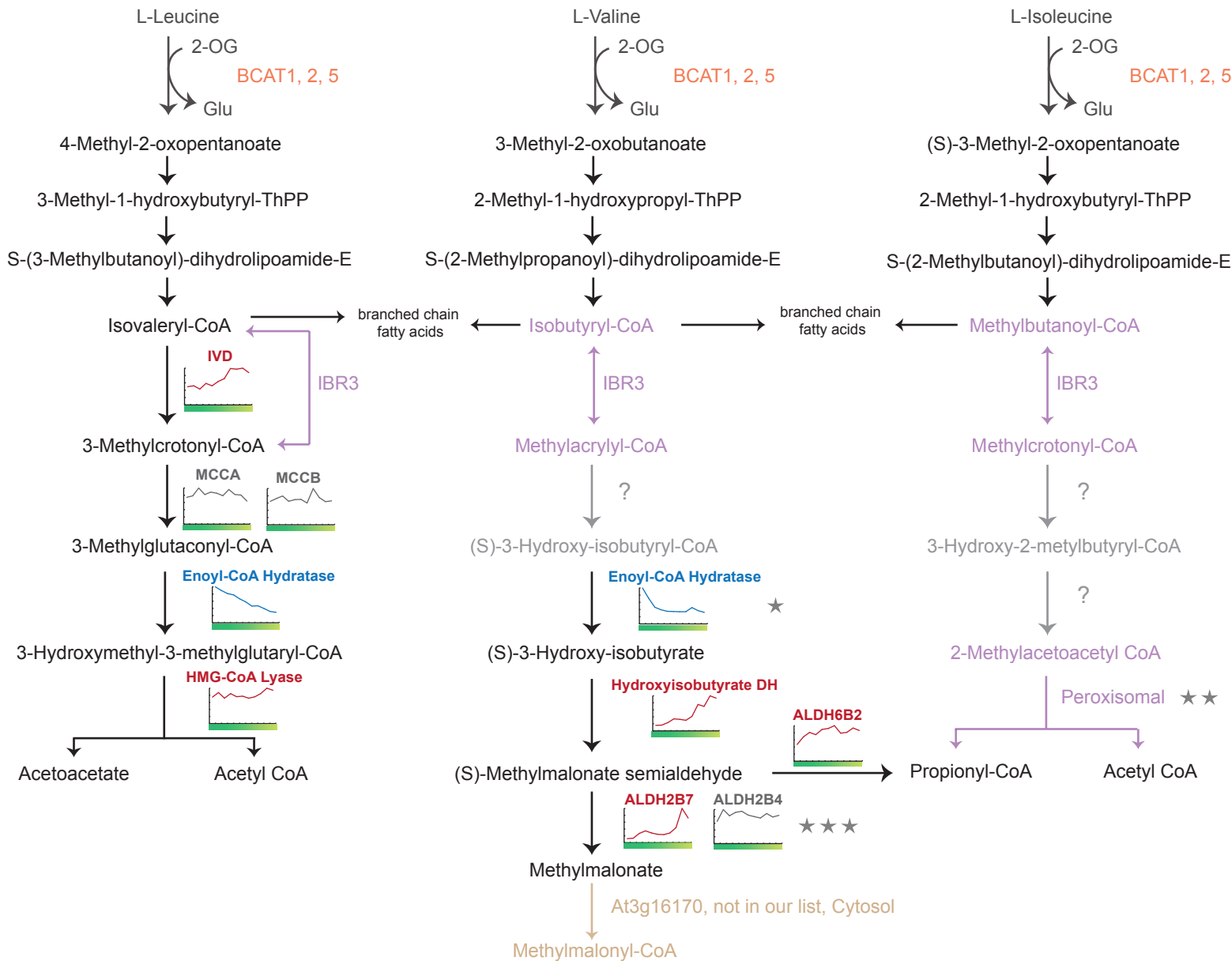
A



B



Supplemental Figure 4.



BCKDH complex

BCATs:

- BCAT3: At3g49680, not in our list, Plastid
- BCAT4: At3g19710, not in our list, Cytosol
- BCAT6: At1g50110, not in our list, Cytosol
- BCAT7: At1g50090, not in our list, Cytosol

BCKDH complex:

- mtLPD2: At3g17240, not in our list, Mitochondrial
- mtLPD1: At1g48030, not in our list, Mitochondrial

IBR3: At3g06810, not in our list, Peroxisomal

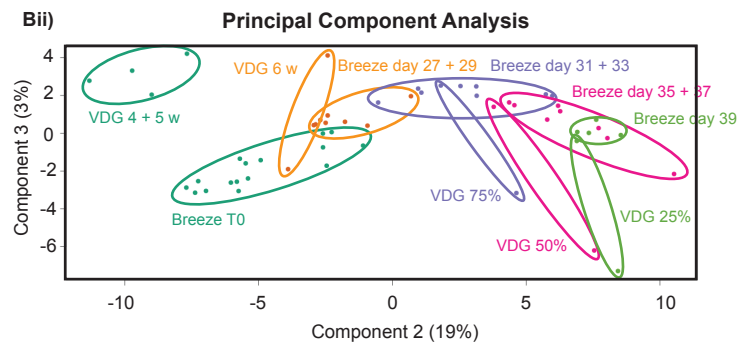
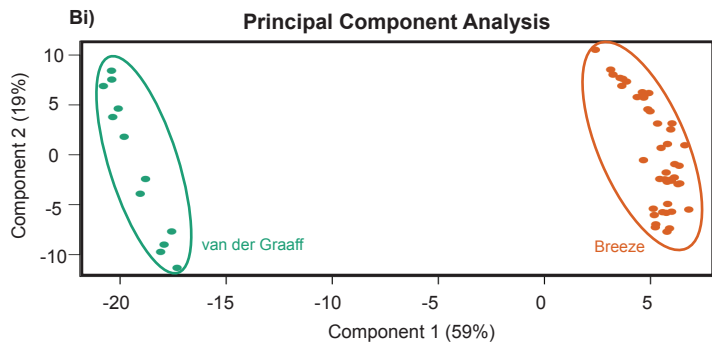
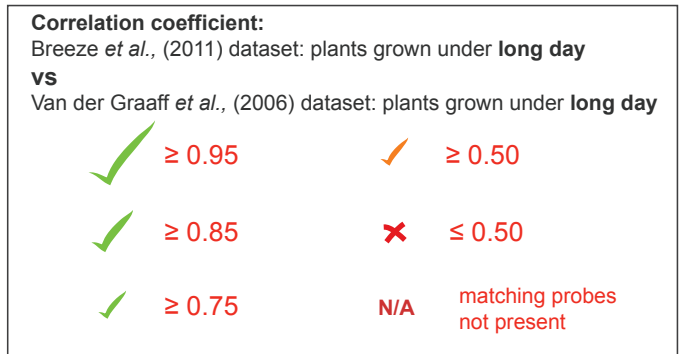
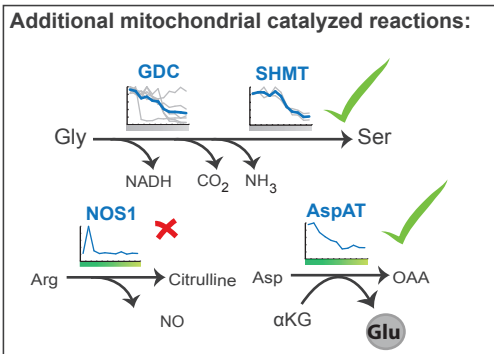
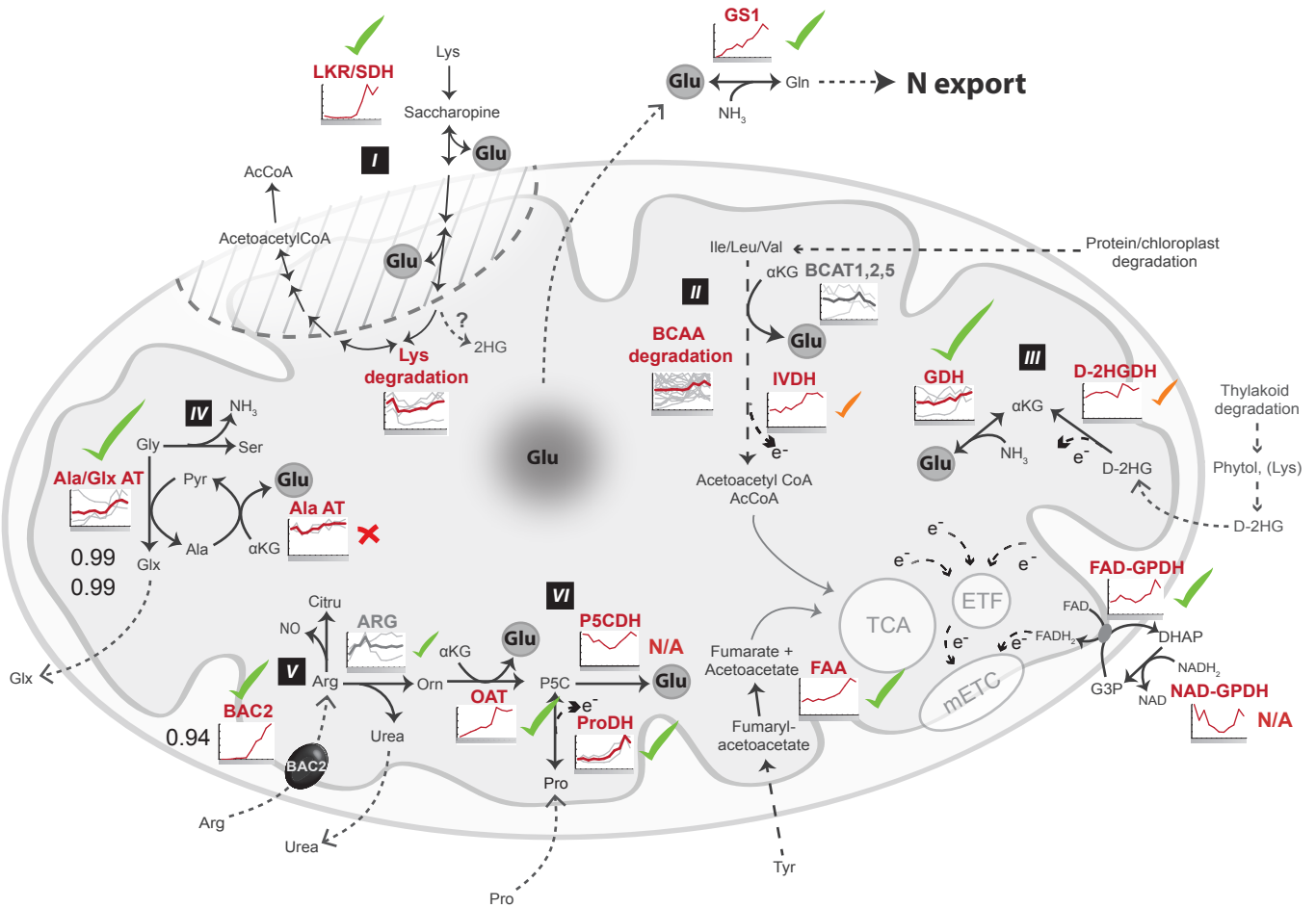
- ★
- At1g06550, not in our list, Peroxisomal
- At2g30650, not in our list, Peroxisomal
- At2g30660, not in our list, Peroxisomal
- At3g60510, not in our list, Mitochondrial
- At5g69540, not in our list, Peroxisomal

- ★★
- At1g04710, not in our list, Peroxisomal
- At2g33150, not in our list, Peroxisomal
- At5g48880, not in our list, Peroxisomal

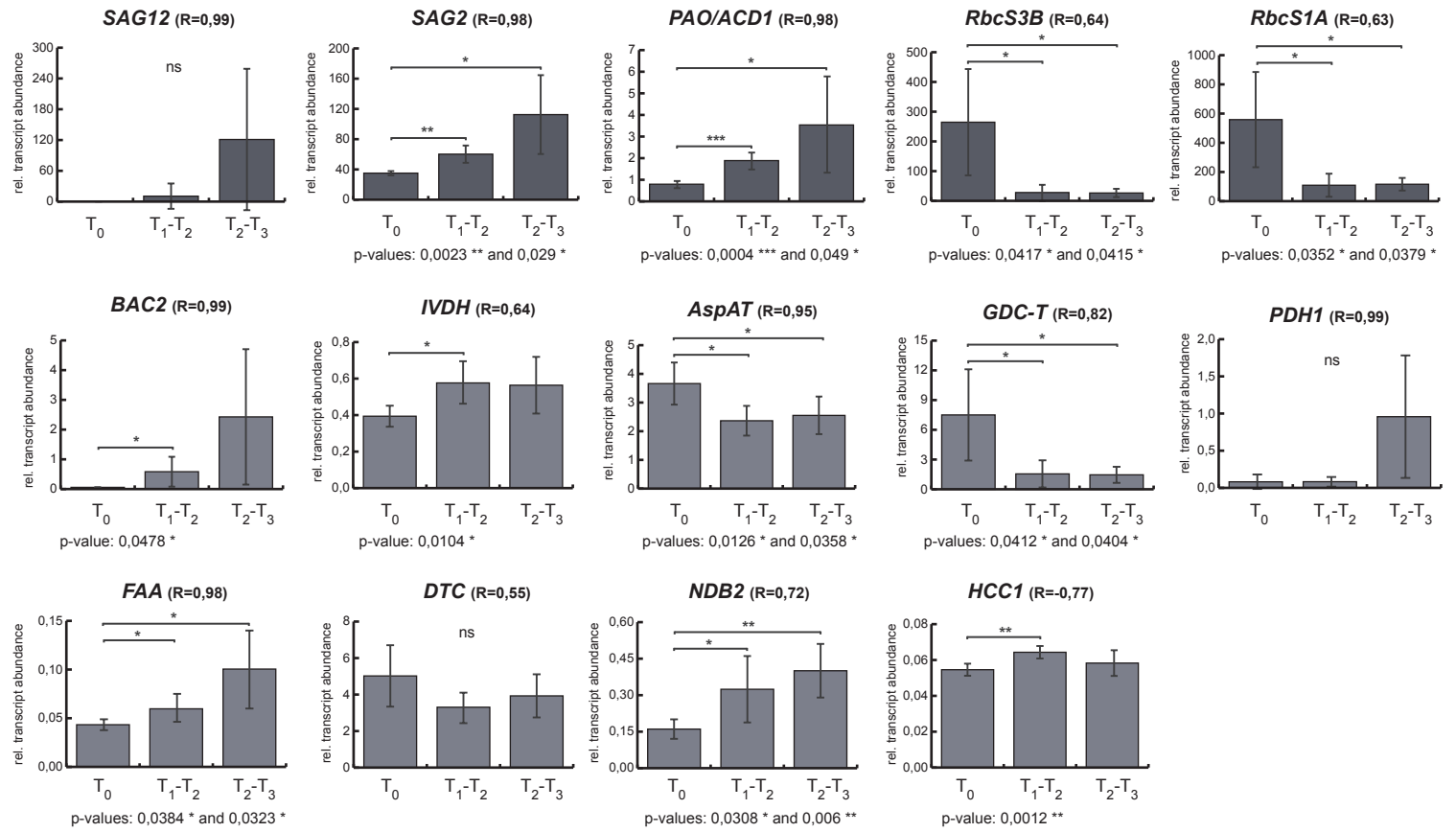
- ★★★
- At1g44170 (ALDH3H1), not in our list, Cytosol, ER, PM
- At1g54100 (ALDH7B4), not in our list, Cytosol
- At4g34240 (ALDH3I1), not in our list, Plastid
- At4g36250 (ALDH3F1), not in our list, Cytosol, ER

Supplemental Figure 5.

A



Supplemental Figure 6.



SAGs	SAG12	AT5G45890
	SAG2	AT5G60360
	RBCS3B	AT5G38410
	RBCS1A	AT1G67090
	PAO/ACD1	AT3G44880
Reference genes	TIP41-like	AT4G34270
	EIF4A1	AT3G13920
	MCF	AT5G48970
tested genes	GDC-T	AT1G11860
	BAC2	AT1G79900
	AspAT	AT2G30970
	IVDH	AT3G45300
	PDH1	AT3G30775
	FAA	AT4G15940
	DTC	AT5G19760
	NDB2	AT4G05020
HCC1	AT3G08950	