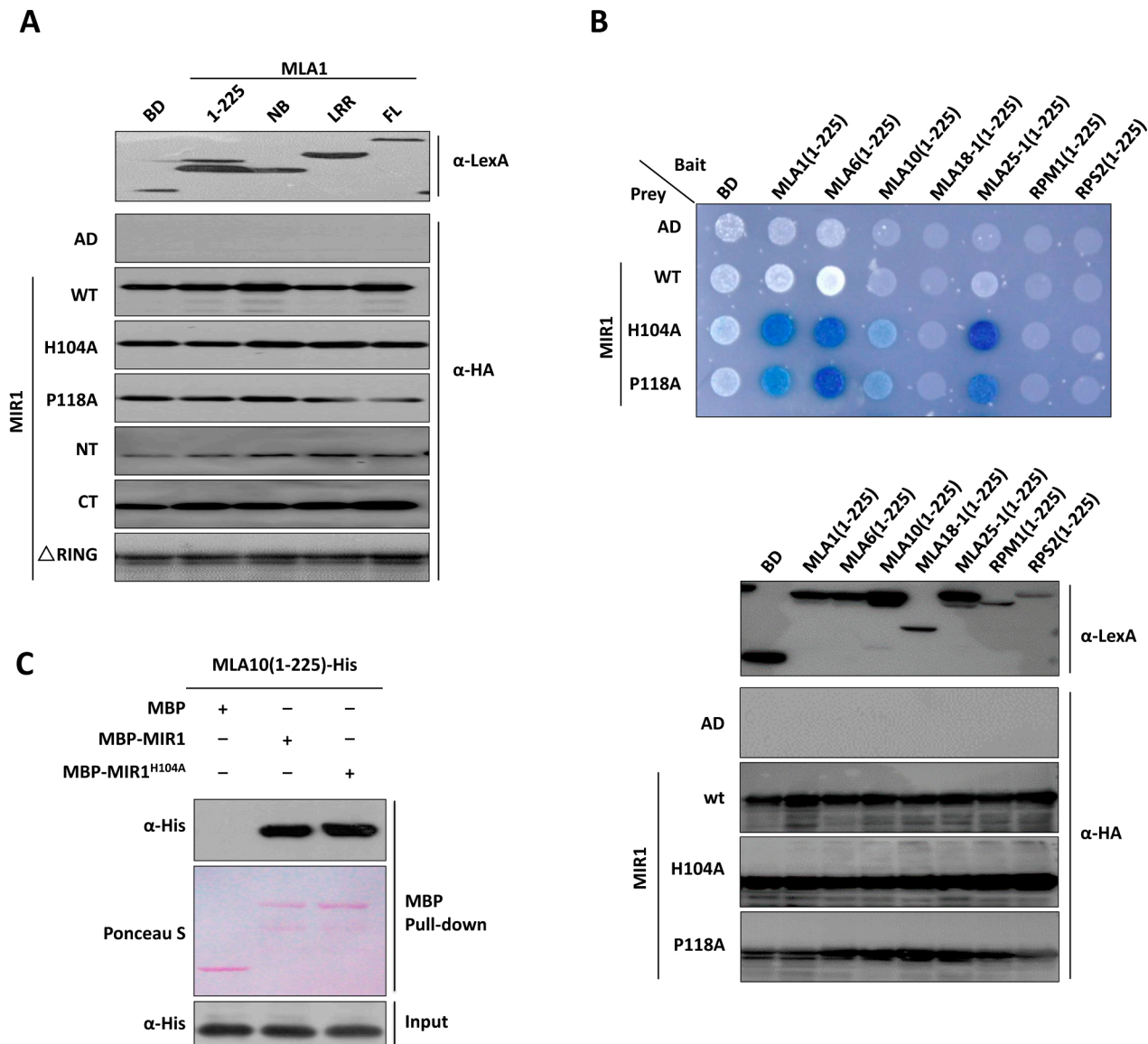


**Figure S3**

**Figure S3.** Analysis for MIR1 interaction with allelic MLAs. (A) Western blotting shows protein levels of indicated MIR1 preys and MLA baits in yeast in Figure 1B. (B) MIR1 interacts with the N-terminus of functional MLAs in yeast. Baits of the N-terminus of indicated MLAs or *Arabidopsis* RPM1 and RPS2 were fused to LexA DNA binding domain (BD) and preys of MIR1 were fused to the B42 activation domain (AD) (top); western blotting shows protein levels for all tested baits and preys (bottom). (C) In vitro MBP pull-down assay for MLA10 and MIR1 interaction.