

Figure S10

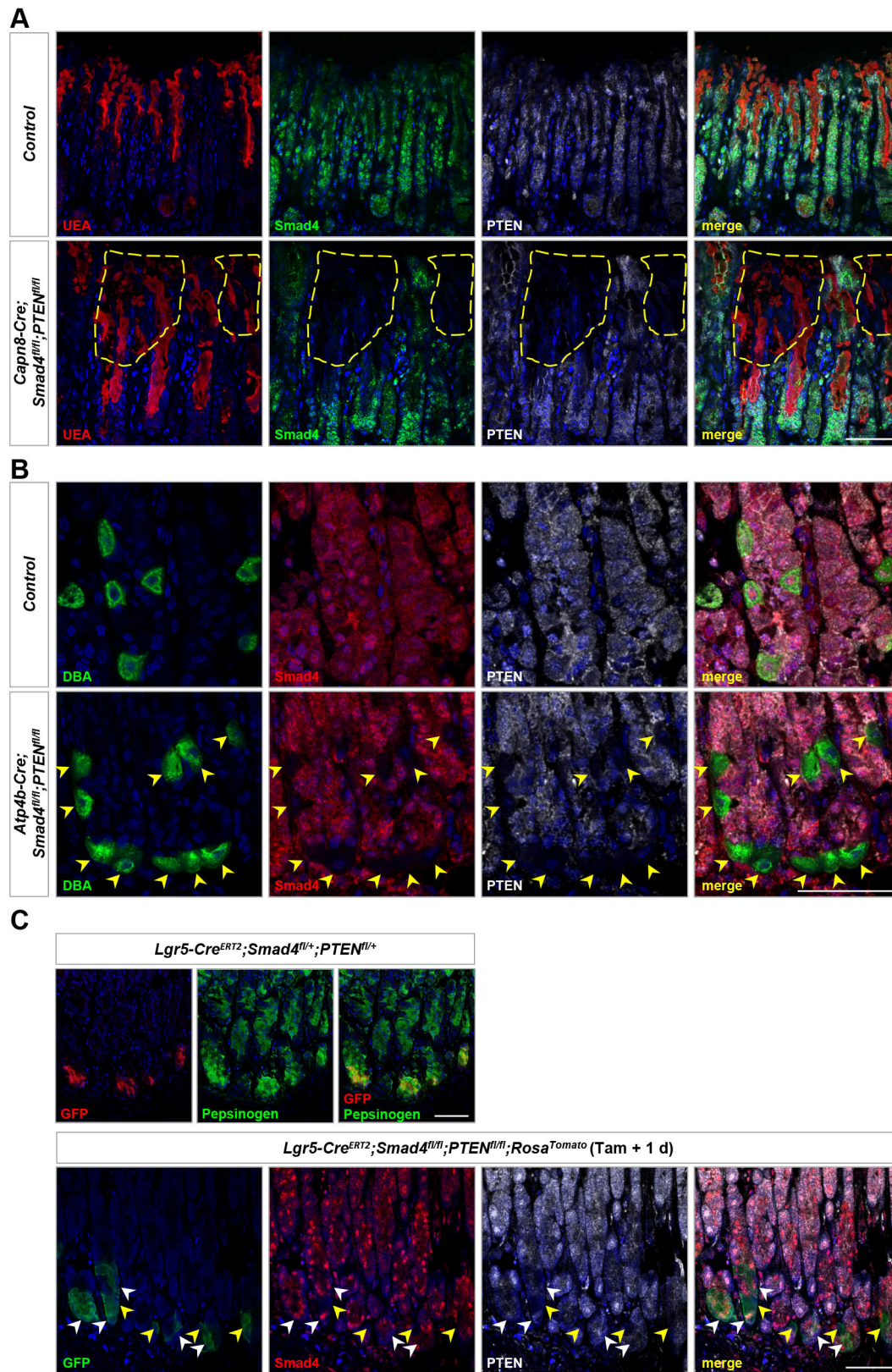


Figure S10 Concurrent loss of Smad4 and PTEN expression in pit and parietal cells at antral region and chief cells at corpus region. (A) Immunofluorescence (IF) analysis using Smad4

(green) and PTEN (white) antibodies and UEA (red; a marker of pit cell) lectin at *Capnn8-Cre;Smad4^{fl/fl};PTEN^{fl/fl}* antrum. (B) IF analysis using Smad4 (red) and PTEN (white) antibodies and DBA (green; a marker of parietal cell) lectin at *Atp4b-Cre;Smad4^{fl/fl};PTEN^{fl/fl}* transition zone between the gastric antrum and corpus on the lesser curvature. (C) IF analysis using GFP (red; for Lgr5⁺ cells) and Pepsinogen (green) antibodies revealed that Lgr5 marked some chief cells at the corpus of gastric lesser curvature. IF analysis using GFP (green; for Lgr5⁺ cells), Smad4 (red) and PTEN (white) antibodies at *Lgr5-Cre^{ERT2};Smad4^{fl/fl};PTEN^{fl/fl}* corpus of gastric lesser curvature. Scale bars: 50 μ m.