

Figure S2

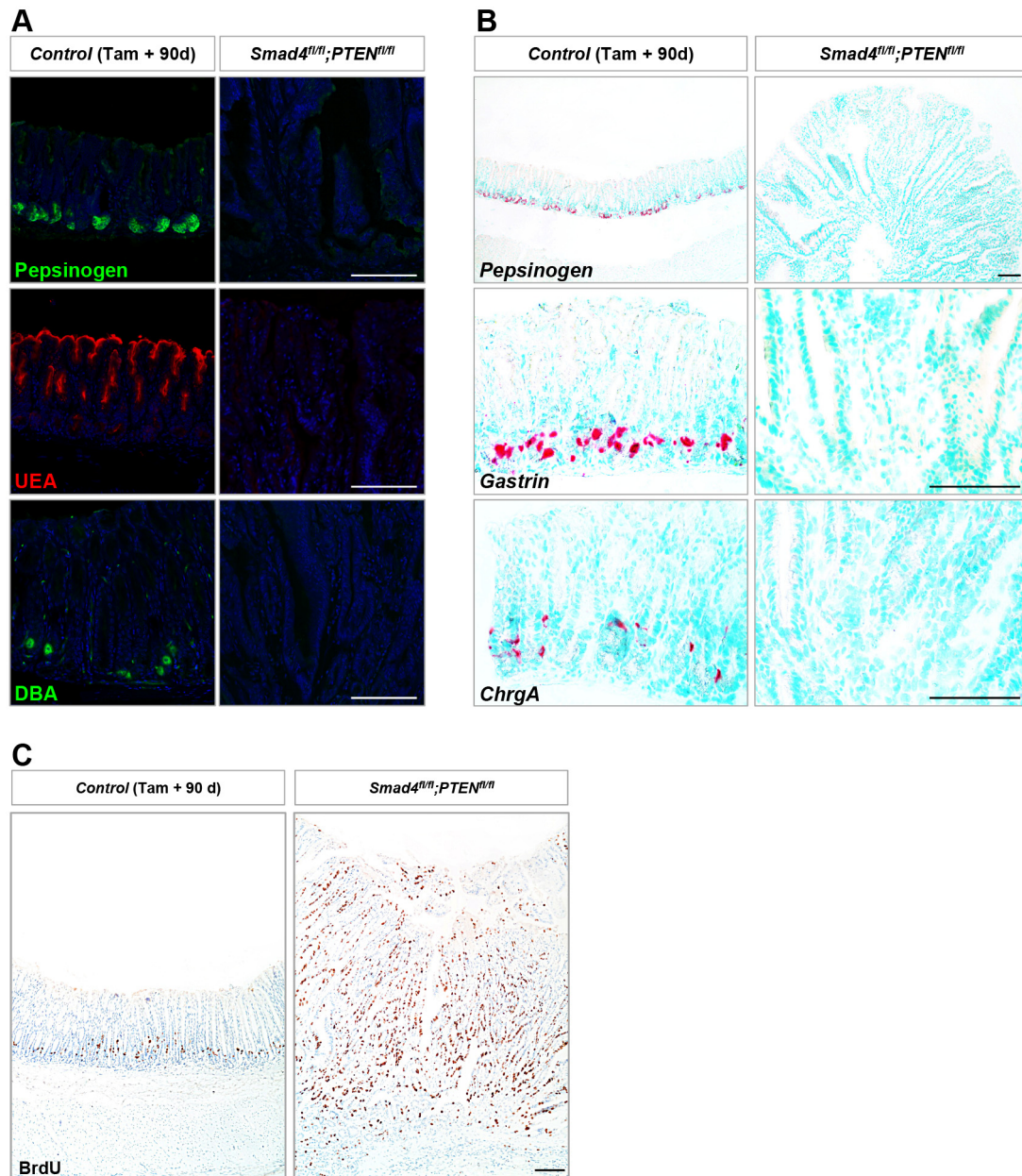


Figure S2 Gastric antral adenoma in *Smad4* and *PTEN* mutant mice exhibited a marked increase in proliferative cells and a complete loss of differentiated cells. (A) IF or lectin analysis of Pepsinogen, UEA and DBA in *Control* antral epithelium as well as *Smad4* and *PTEN* double mutant adenoma at 90 days post-induction. (B) ISH analysis of *Pepsinogen*, *Gastrin* and *ChrgA* in *Control* antral epithelium and double mutant adenoma at 90 days after induction. (C) BrdU incorporation of *Control* antral epithelium and double mutant adenoma at 90 days post-induction. Scale bars: 100 μ m.