

Figure S3

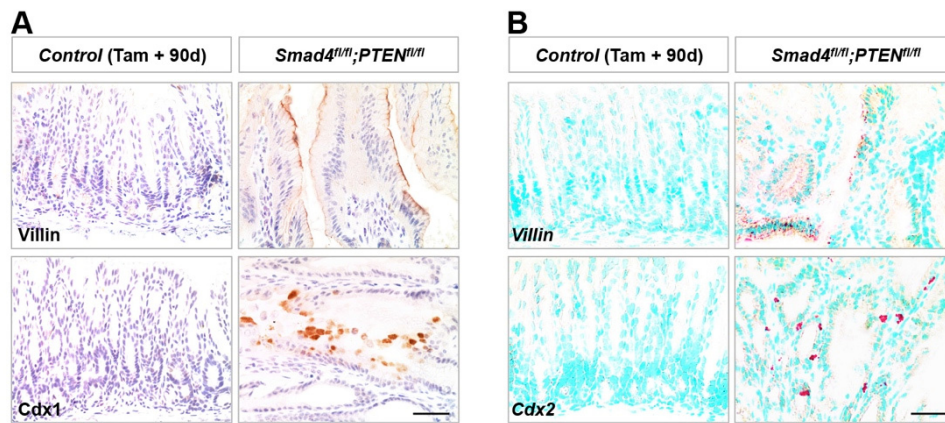


Figure S3 Gastric antral adenoma in *Smad4* and *PTEN* mutant mice ectopically expressed intestinal epithelial markers. (A) IHC analysis of Villin and Cdx1 in *Control* antral epithelium as well as *Smad4* and *PTEN* double mutant adenoma at 90 days post-induction. (B) ISH analysis of *Villin* and *Cdx2* mRNA expression in *Control* antral epithelium and double mutant adenoma at 90 days post-induction. Scale bar: 50 μ m.