

Figure S4

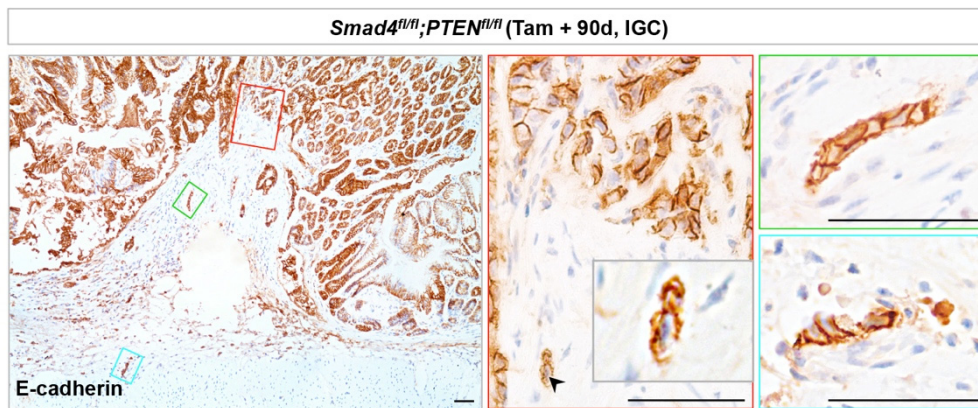


Figure S4 Invasive IGC in *Smad4* and *PTEN* compound mutant mice. Immunostaining of E-cadherin in the invasive IGC of *Smad4* and *PTEN* double mutant mice at 90 days post-induction. The representative invasive lesions in green, red and light blue solid-line boxes were magnified on the right. The invasive adenocarcinoma presented with the infiltrating strands of neoplastic cells. Scale bar: 50 μ m.