

Figure S5

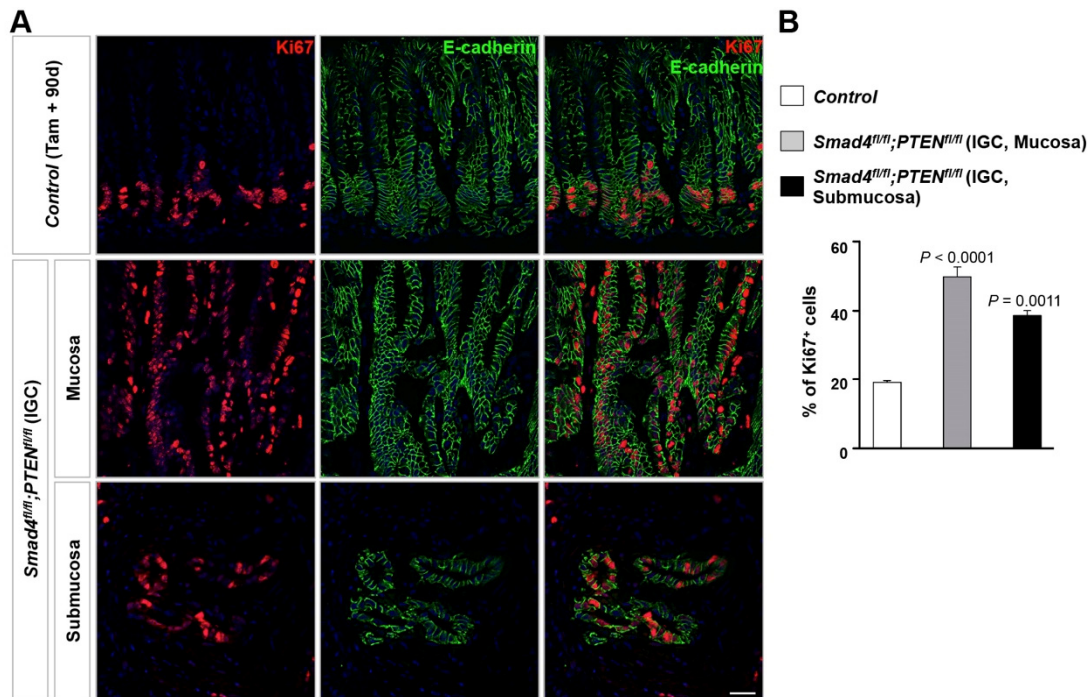


Figure S5 Active proliferation in IGC of *Smad4* and *PTEN* compound mutant mice. (A) Double immunostaining of Ki67 and E-cadherin in *Control* antral epithelium, the mucosal and submucosal lesions of IGC from *Smad4* and *PTEN* compound mutant mice at 90 days post-induction. (B) Quantification of the percentage of proliferative Ki67⁺ cells in E-cadherin⁺ epithelial cells in *Control* gastric antrum and IGC. Significance was calculated using Student's t test (n = 4). Scale bars: 25 μ m.