

Figure S7

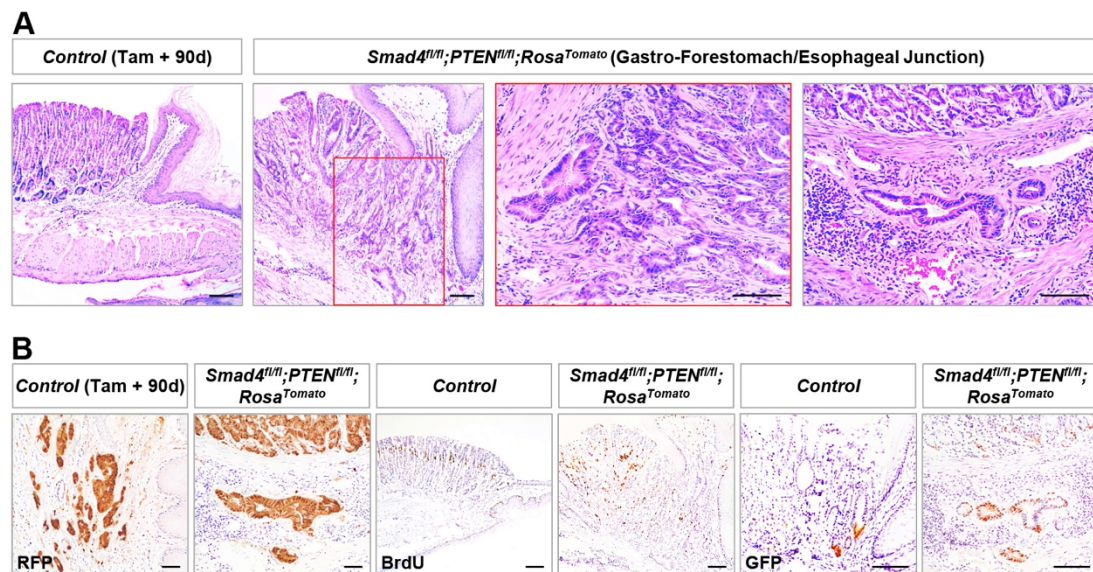


Figure S7 Invasive IGC at the gastro-forestomach/esophageal junction of *Smad4* and *PTEN* double mutant stomach. **(A)** Invasive IGC developed at the gastro-forestomach/esophageal junction of double mutant mice. The red solid-line boxes were magnified on the right. **(B)** IHC analysis of RFP, BrdU and GFP in the invasive IGC at the gastro-forestomach/esophageal junction of double mutant mice. Scale bar: 100 μ m.