

Figure S8

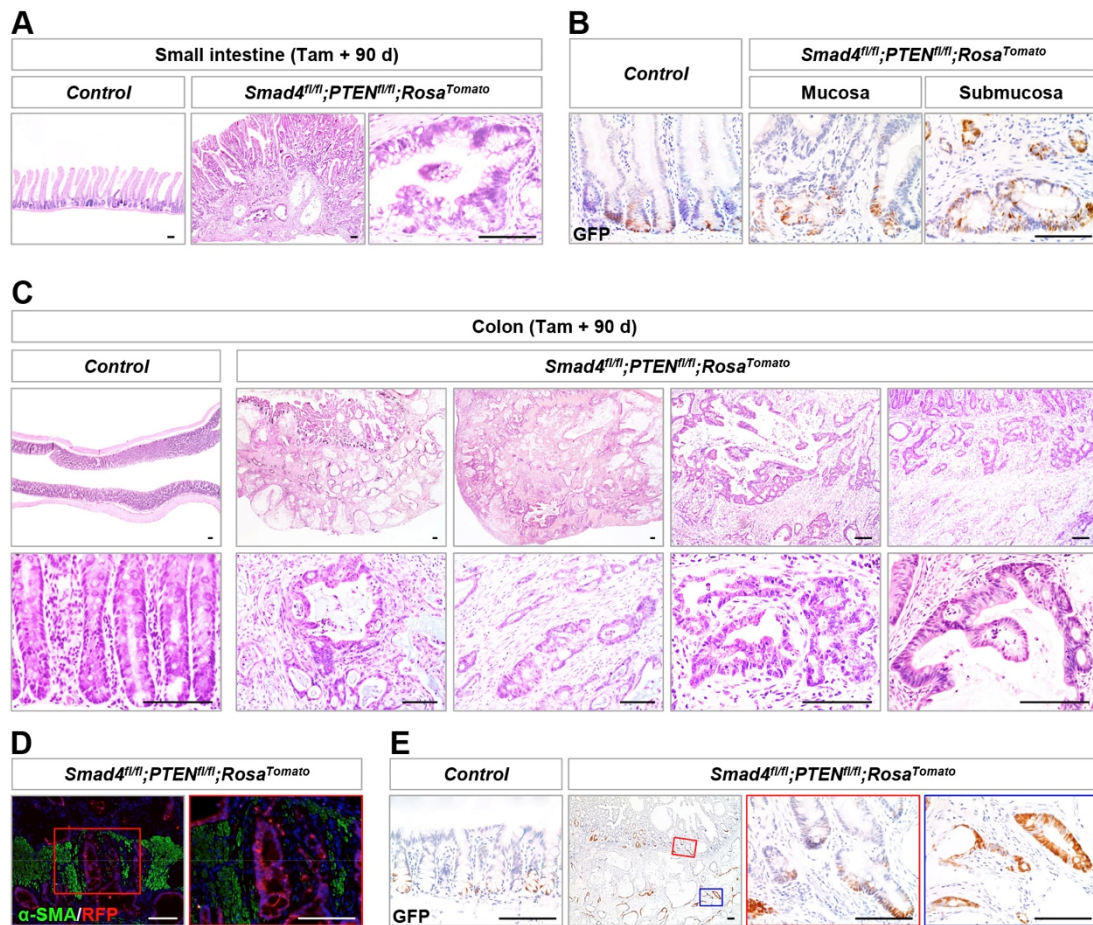


Figure S8 Invasive adenocarcinoma in the intestine and colon of *Smad4* and *PTEN* compound mutant mice. (A) H&E staining of the small intestine from *Control* and double mutant mice at 90 days post-induction. (B) IHC analysis using GFP antibody in *Control* intestine and invasive adenocarcinoma of *Smad4* and *PTEN* mutant mice. (C) H&E staining of the colon of *Control* and double mutant mice at 90 days post-induction. (D) Double IF analysis using RFP (for cancer cells) and α -SMA (for smooth muscle cells) antibodies showed the invasive lesions deep into the muscularis propria. The representative invasive lesion (red frame) was magnified on the right. (E) IHC analysis using GFP antibody in *Control* colon and adenocarcinoma from the *Smad4* and *PTEN* mutant mice. The representative mucosal lesion (red frame) and invasive lesion (blue frame) was magnified on the right. Scale bars: 100 μ m.