

Figure S9

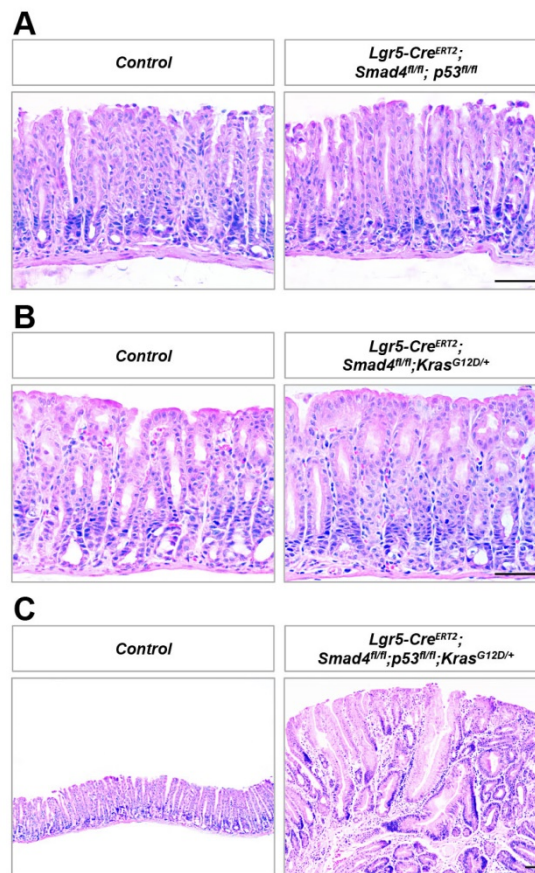


Figure S9 Smad4 deletion with combination of p53 deletion and/or $Kras^{G12D}$ expression in gastric $Lgr5^+$ stem cells led to tumor formation. (A) H&E staining of the gastric antrum from Control (*Lgr5-Cre;Smad4^{fl/fl};p53^{fl/fl}*) and *Smad4* and *p53* double mutant mice (*Lgr5-Cre;Smad4^{fl/fl};p53^{fl/fl}*) at 4 months after six daily administrations of 2mg tamoxifen. (B) H&E staining of the gastric antrum from Control (*Lgr5-Cre;Smad4^{fl/fl};Kras^{+/+}*) and *Smad4* deletion with combination of $Kras^{G12D}$ expression mice (*Lgr5-Cre;Smad4^{fl/fl};Kras^{G12D/+}*) at 4 months after a single induction. (C) H&E staining of the gastric antrum from Control (*Lgr5-Cre;Smad4^{fl/fl};p53^{fl/fl};Kras^{+/+}*) and triple mutant mice (*Lgr5-Cre;Smad4^{fl/fl};p53^{fl/fl};Kras^{G12D/+}*) at 4 months after a single induction. Scale bars: 50 μ m.