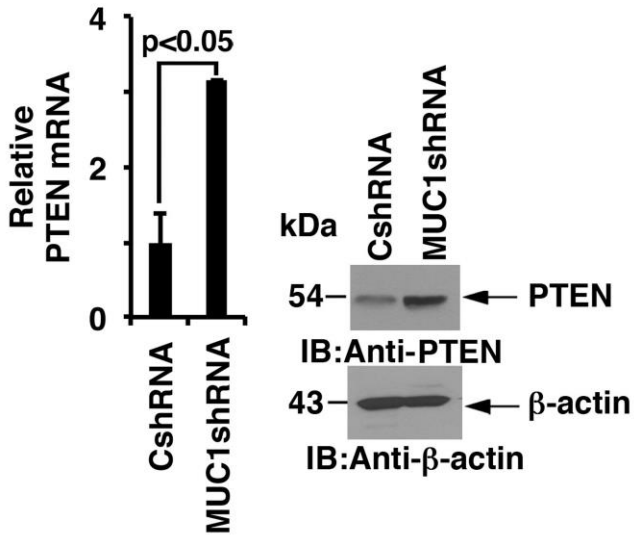


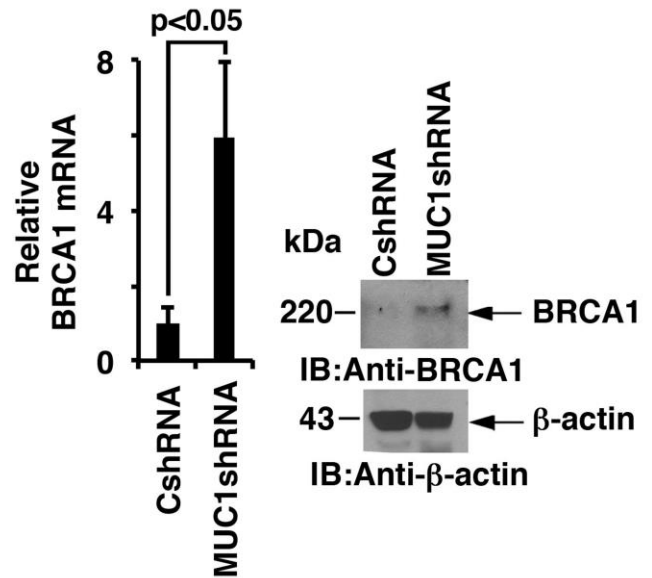
MUC1-C induces DNA methyltransferase 1 and represses tumor suppressor genes in acute myeloid leukemia

Supplemental Material

A. MOLM-14



B. MOLM-14



Supplemental Fig. S1. Silencing MUC1-C derepresses PTEN and BRCA1 expression in MOLM-14 cells. (A and B) The indicated MOLM-14 cells were analyzed for PTEN (A) and BRCA1 (B) mRNA levels by qRT-PCR (left). The results are expressed as a relative mRNA levels (mean \pm SD of three determinations) as compared to that obtained with CshRNA cells (assigned a value of 1). Lysates from MOLM-14/CshRNA and MOLM-14/MUC1shRNA cells were immunoblotted for indicated antibodies (right).

Supplemental Table S1. Primers used for qRT-PCR.

DNMT1	Fwd: 5'-CCCAAGTAACTGGGATTAGAGC-3'
DNMT1	Rev: 5'-GGTTTGCCTGGTGCTTTTC-3'
E-cadherin	Fwd: 5'-GAAGGTGACAGAGCCTCTGGAT-3'
E-cadherin	Rev: 5'-GATCGGTTACCGTGATCAAAATC-3'
BRCA1	Fwd: 5'-GCGTCCCCTCACAAATAAAT-3'
BRCA1	Rev: 5'-CTTGACCATTCTGCTCCGTT-3'
PTEN	Fwd: 5'-AAGGGACGAACTGGTGTAATG-3'
PTEN	Rev: 5'-GCCTCTGACTGGGAATAGTTA-3'
β -actin	Fwd: 5'-TTCTACAATGAGCTGCGTGTG-3'
β -actin	Rev: 5'-GGGGTGTGAAGGTCTCAA-3'

Supplemental Table S2. Primers used for ChIP and MeDIP qPCR.

<i>DNMT1</i>	Fwd: 5' -GCTAGGATTACAGGTGTGTGTC-3'
<i>DNMT1</i>	Rev: 5' -GATCGCTTGAGGTTAGGAGTTC-3'
<i>CDH1</i>	Fwd: 5' -CTTTCTGATCCCAGGTCTTAGTG-3'
<i>CDH1</i>	Rev: 5' -TAGGGTCTAGGTGGGTTATGG-3'
<i>GAPDH</i>	Fwd: 5' -TACTAGCGGTTTTACGGGCG-3'
<i>GAPDH</i>	Rev: 5' -TCGAACAGGAGGAGCAGAGAGCGA-3'