

# Prognostic relevance of autophagy markers LC3B and p62 in esophageal adenocarcinomas

## Supplementary Material

**Supplementary Table 1.1:** Cross-tabulation for LC3B dots and p62 dots individual scores with p-value (bold = significant)

Staining pattern		p62 dots			Total
LC3B dots	Score	0	1	2	
	<b>0</b>	28	23	7	58
	<b>1</b>	14	20	5	39
	<b>2</b>	6	6	5	17
	<b>3</b>	0	0	2	2
<b>Total</b>		48	49	19	116
<b>p= 0.020</b>					

**Supplementary Table 1.2:** Cross-tabulation for LC3B dots and p62 cytoplasm individual scores with p-value

Staining pattern		p62 cytoplasm				Total
LC3B dots	Score	0	1	2	3	
	<b>0</b>	28	23	12	0	58
	<b>1</b>	14	20	11	0	39
	<b>2</b>	6	6	4	1	17
	<b>3</b>	0	0	0	0	2
<b>Total</b>		12	76	27	1	116
<b>p= 0.167</b>						

**Supplementary Table 1.3:** Cross-tabulation for LC3B dots and p62 nuclear individual scores with p-value

Staining pattern		p62 nuclear			Total
LC3B dots	Score	0	1	2	
	<b>0</b>	33	19	6	58
	<b>1</b>	15	17	7	39
	<b>2</b>	8	6	3	17
	<b>3</b>	2	0	0	2
<b>Total</b>		58	42	16	116
<b>p= 0.473</b>					

**Supplementary Table 2.1:** Cross-tabulation for individual p62 dots and p62 cytoplasmic scores with p-value (bold = significant)

Staining pattern		p62 cytoplasm				Total
p62 dots	Score	<b>0</b>	<b>1</b>	<b>2</b>	<b>3</b>	
	<b>0</b>	9	34	5	0	48
	<b>1</b>	2	33	14	0	49
	<b>2</b>	1	9	8	1	19
<b>Total</b>		12	76	27	1	116
<b>p= 0.005</b>						

**Supplementary Table 2.2:** Cross-tabulation for individual p62 nuclear and p62 dots scores with p-value

Staining pattern		p62 nuclear			Total
p62 dots	Score	<b>0</b>	<b>1</b>	<b>2</b>	
	<b>0</b>	23	15	10	48
	<b>1</b>	24	20	5	49
	<b>2</b>	11	7	1	19
<b>Total</b>		58	42	16	116
<b>p= 0.394</b>					

**Supplementary Table 2.3:** Cross-tabulation for individual p62 cytoplasm and p62 nuclear scores with p-value

Staining pattern		p62 nuclear			Total
p62 cytoplasm	Score	<b>0</b>	<b>1</b>	<b>2</b>	
	<b>0</b>	9	2	1	12
	<b>1</b>	32	34	10	76
	<b>2</b>	17	5	5	27
	<b>3</b>	0	1	0	1
<b>Total</b>		58	42	16	116
<b>p= 0.090</b>					

**Supplementary Table 3.1:** Cross-tabulation for p62 cytoplasm and p62 dots expression levels with p-value (bold = significant)

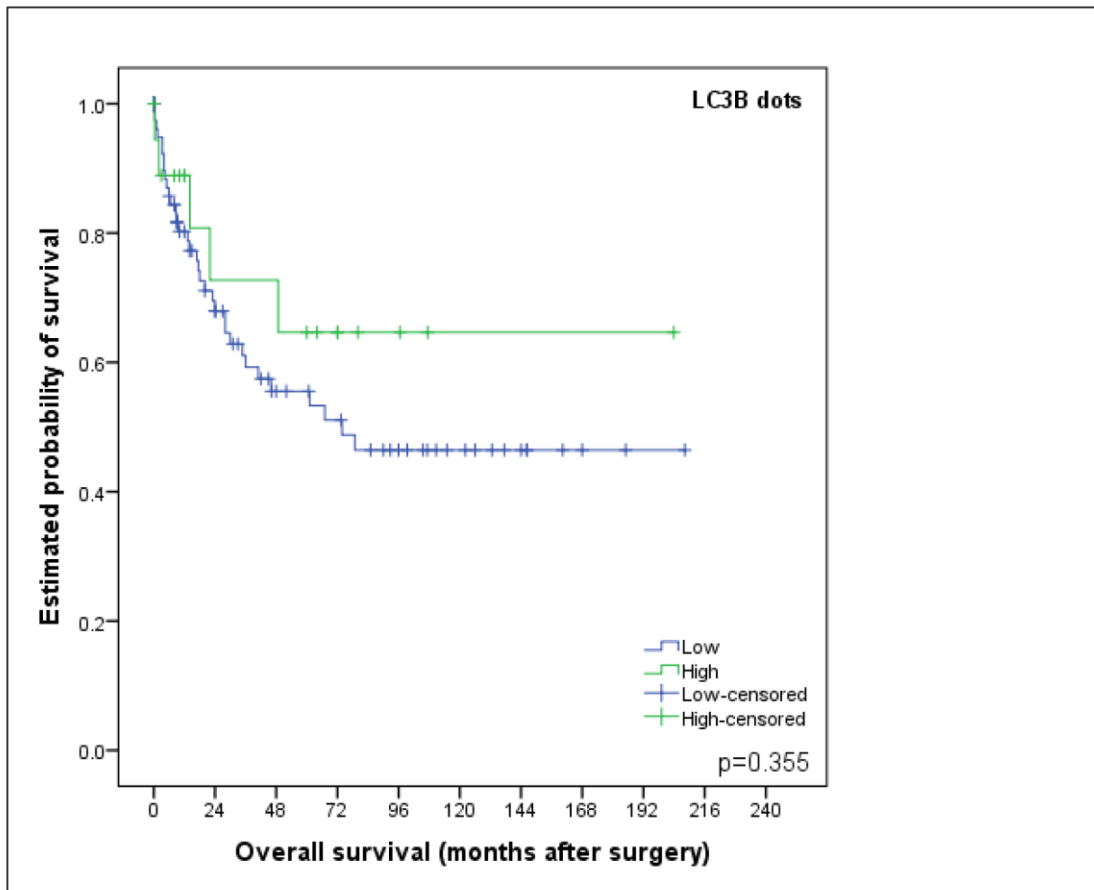
Staining pattern		p62 dots		Total
p62 cytoplasm	Expression	Low	High	
	Low	23	35	58
	High	25	33	58
Total		48	68	116
<b>p= 0.026</b>				

**Supplementary Table 3.2:** Cross-tabulation for p62 nuclear and p62 dots expression levels with p-value

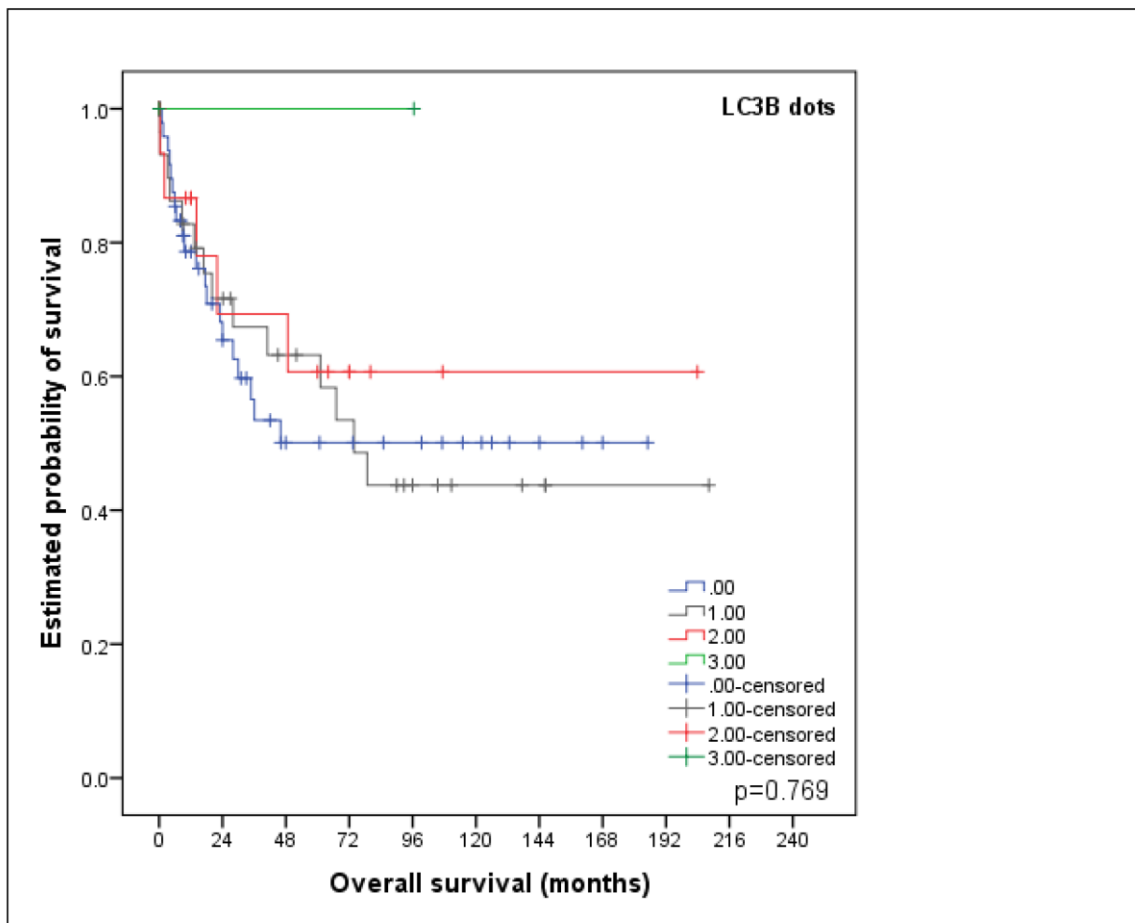
Staining pattern		p62 dots		Total
p62 nuclear	Expression	Low	High	
	Low	23	35	58
	High	25	33	58
Total		48	68	116
p= 0.851				

**Supplementary Table 3.3:** Cross-tabulation for p62 nuclear and p62 cytoplasm expression levels with p-value

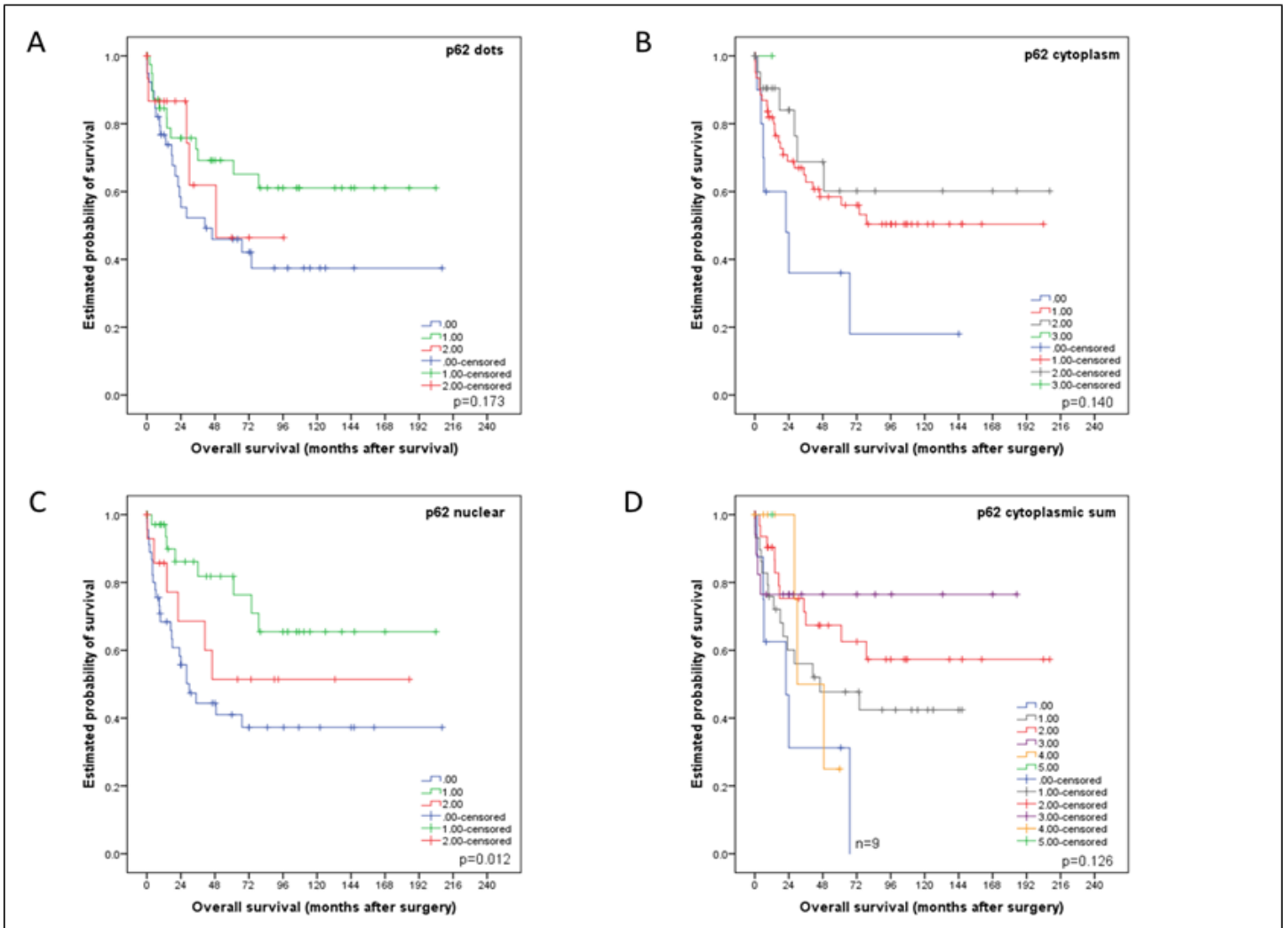
Staining pattern		p62 cytoplasm		Total
p62 nuclear	Expression	Low	High	
	Low	9	49	58
	High	3	55	58
Total		12	104	116
p= 0.125				



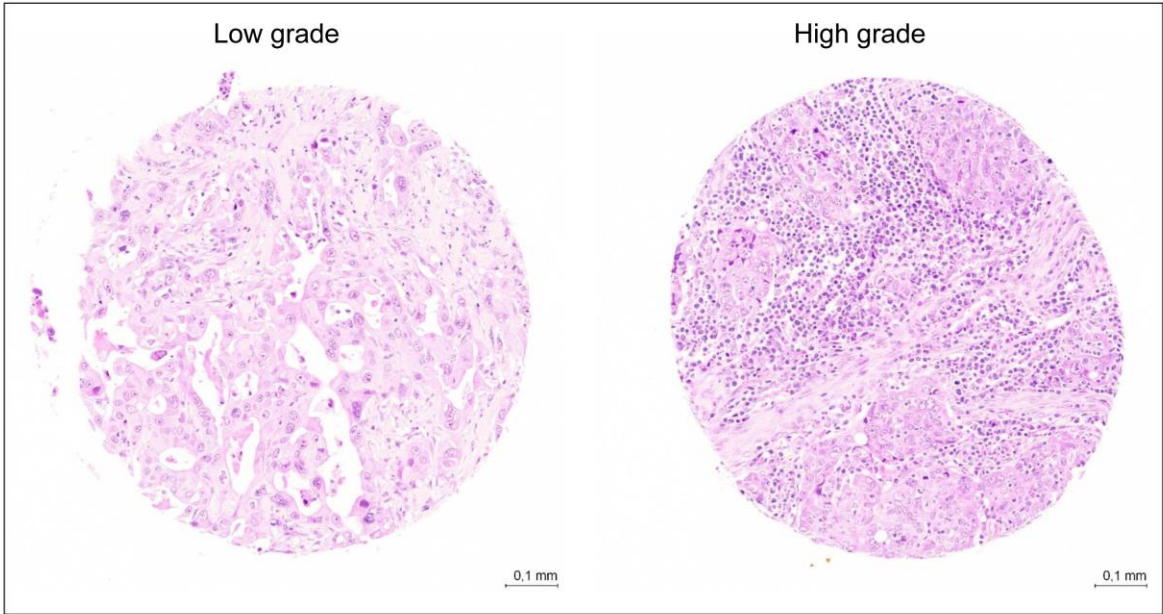
**Supplementary Figure 1:** Kaplan-Meier survival curves for LC3B dot-like staining patterns (low/high groups) in esophageal adenocarcinomas



**Supplementary Figure 2:** Kaplan-Meier survival curves for LC3B dot-like staining patterns (individual scores) in esophageal adenocarcinomas



**Supplementary Figure 3:** Kaplan-Meier survival curves for individual scores of A) p62 dot-like staining, B) p62 cytoplasmic staining, C) p62 nuclear staining and D) p62 cytoplasmic sum score.



**Supplementary Figure 4:** Examples of extent of immunoinfiltrates in esophageal adenocarcinomas