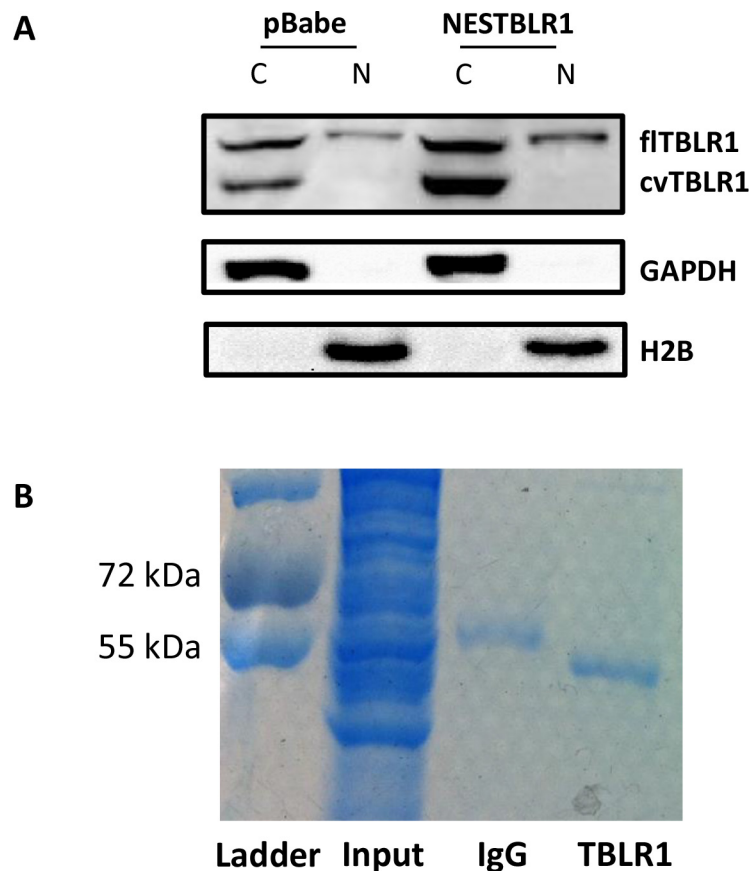
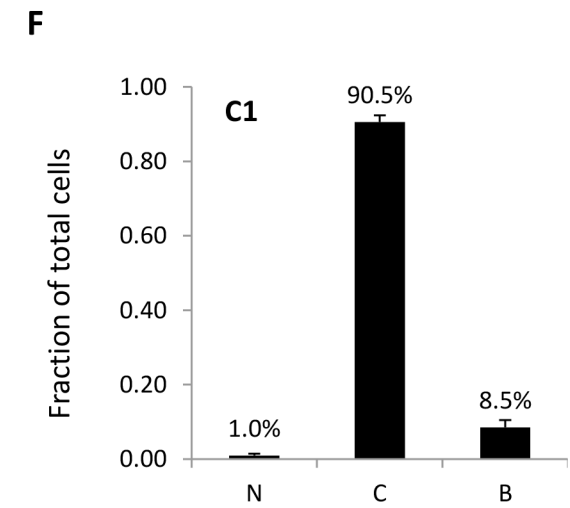
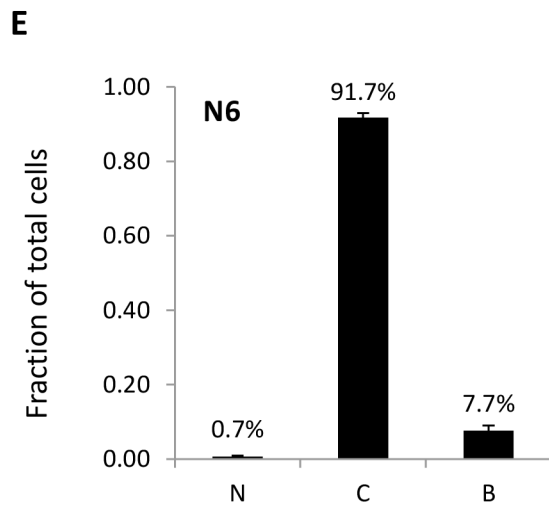
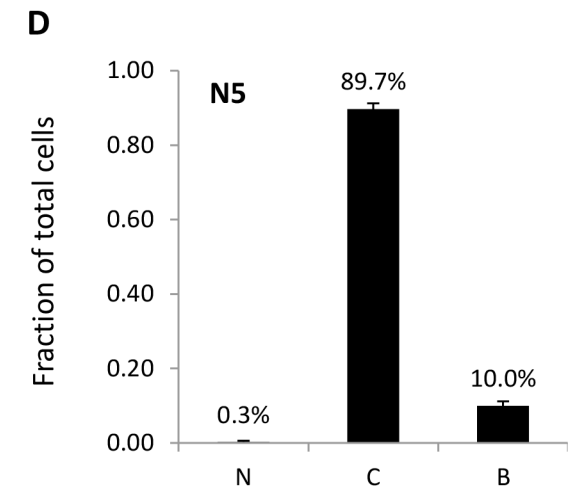
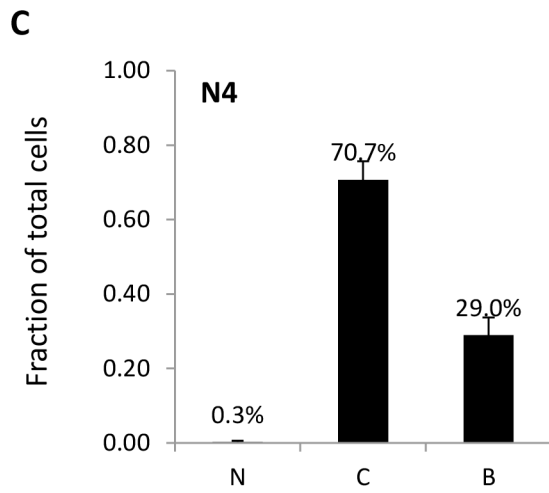
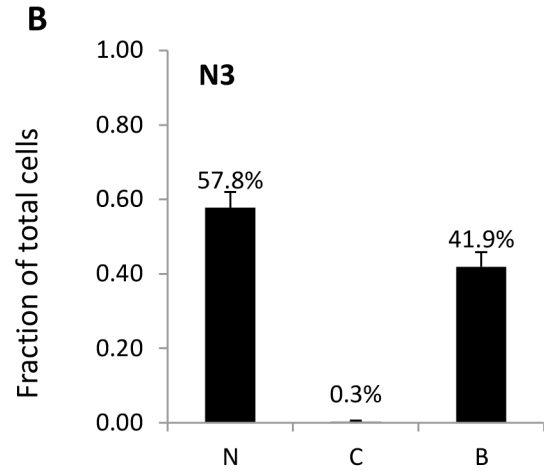
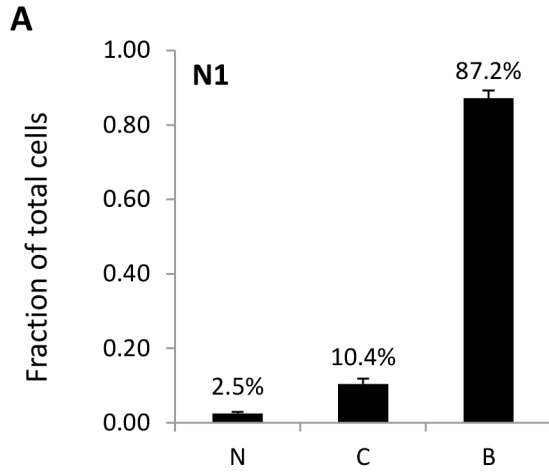


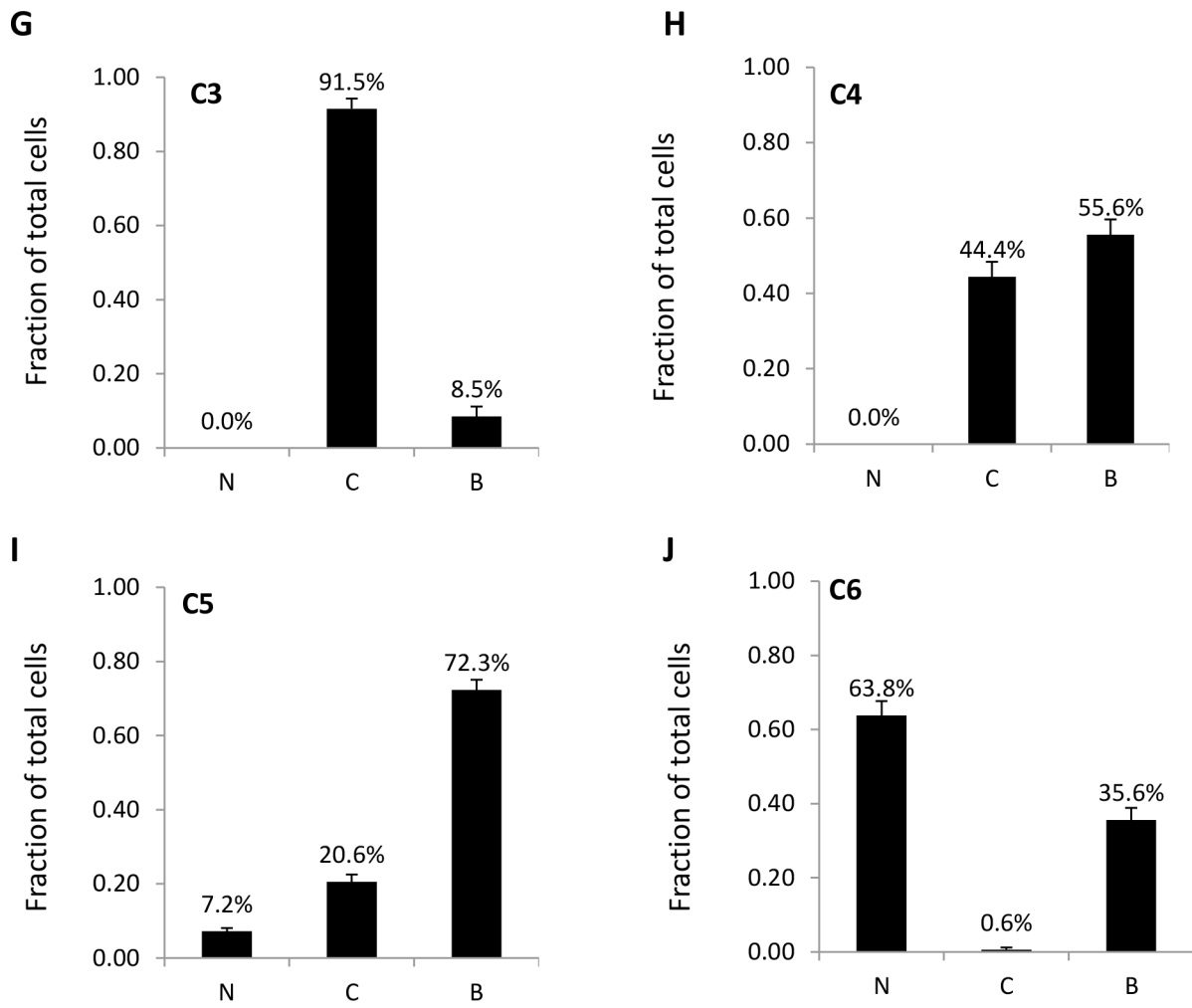
## Cytoplasmic, full length and novel cleaved variant, TBLR1 reduces apoptosis in prostate cancer under androgen deprivation

### Supplementary Materials



**Supplementary Figure S1: Colloidal coomassie blue stain of cvTBLR1 purification.** (A) Western blot for TBLR1 on fractionated cell lysates comparing LNCaP NESTBLR1 to LNCaP pBabe control. (B) Total cell lysate input and 10% loading of cvTBLR1 and IgG control immunoprecipitation for large scale purification of protein used for mass spectrometric analysis.





**Supplementary Figure S2: Deletion analysis of TBLR1 to identify localization sequences.** (A–J) Quantification of TBLR1 localization observed in 293T cells transfected with mutant GFP-TBLR1 constructs. Cells showing GFP expression by fluorescent imaging were counted as cytoplasmic, nuclear, or both for expression.

**Supplementary Table S1: List of primers used for mutation analysis cloning**

N1	F: 5'-aaggCATATGatgagtataagcagtg-3'
	R: 5'-gtacGGATCCCTActgactgatatggcttc-3'
N2	F: 5'-aaggCATATGatgagtataagcagtg-3'
	R: 5'-gtacGGATCCCTAaggcatctatcaggacag-3'
N3	F: 5'-aaggCATATGatgagtataagcagtg-3'
	R: 5'-gtacGGATCCCTAagagccactGGTgctgtt-3'
N4	F: 5'-aaggCATATGatgagtataagcagtg-3'
	R: 5'-gtacGGATCCCTActgttcttggcttcacc-3'
N5	F: 5'-aaggCATATGatgagtataagcagtg-3'
	R: 5'-gtacGGATCCCTAatcatggacacaattgtc-3'
N6	F: 5'-aaggCATATGatgagtataagcagtg-3'
	R: 5'-gtacGGATCCCTAaggtatggatgcatatccc-3'
C1	F: 5'-gtacCATATGtccaataataatggtgcc-3'
	R: 5'-aagtGGATCCCTAttccgaaggtctaatac-3'
C2	F: 5'-gtacCATATGcctgatgtagtacaaca-3'
	R: 5'-aagtGGATCCCTAttccgaaggtctaatac-3'
C3	F: 5'-gtacCATATGacacagttagtacttaga-3'
	R: 5'-aagtGGATCCCTAttccgaaggtctaatac-3'
C4	F: 5'-gtacCATATGtttctttcattcagca-3'
	R: 5'-aagtGGATCCCTAttccgaaggtctaatac-3'
C5	F: 5'-gtacCATATGttgcaagcacataataaa-3'
	R: 5'-aagtGGATCCCTAttccgaaggtctaatac-3'
C6	F: 5'-gtacCATATGttgacaaaacaccaagag-3'
	R: 5'-aagtGGATCCCTAttccgaaggtctaatac-3'
N7	F: 5'-aaggCATATGatgagtataagcagtg-3'
	R: 5'-aagtGGATCCCTAagactctattggtcgaccatca-3'
C7	F: 5'-aaggCATATGctgtccctgatagatgccgtaa-3'
	R: 5'-aagtGGATCCCTAttccgaaggtctaatac-3'
C8	F: 5'-ttacgaCATATGgatggtcgaccaatagag-3'
	R: 5'-aagtGGATCCCTAttccgaaggtctaatac-3'
Leu81Ala	5'-cggcatctatcaggacgcagactctattggtcgac-3'
	5'-gtcgaccaatagatctgctgcctgatagatgccg-3'
Leu83Ala	5'-ggcattacggcatctatcgggacagagactctattgg-3'
	5'-ccaatagagtctctgtccgcatagatgccgtaatgcc-3'

F: Forward; R: Reverse.

Forward and reverse primers used to create pCDNA GFP N1-N7, C1-C8, and site-directed mutation primers to modify leucine to alanine residues.