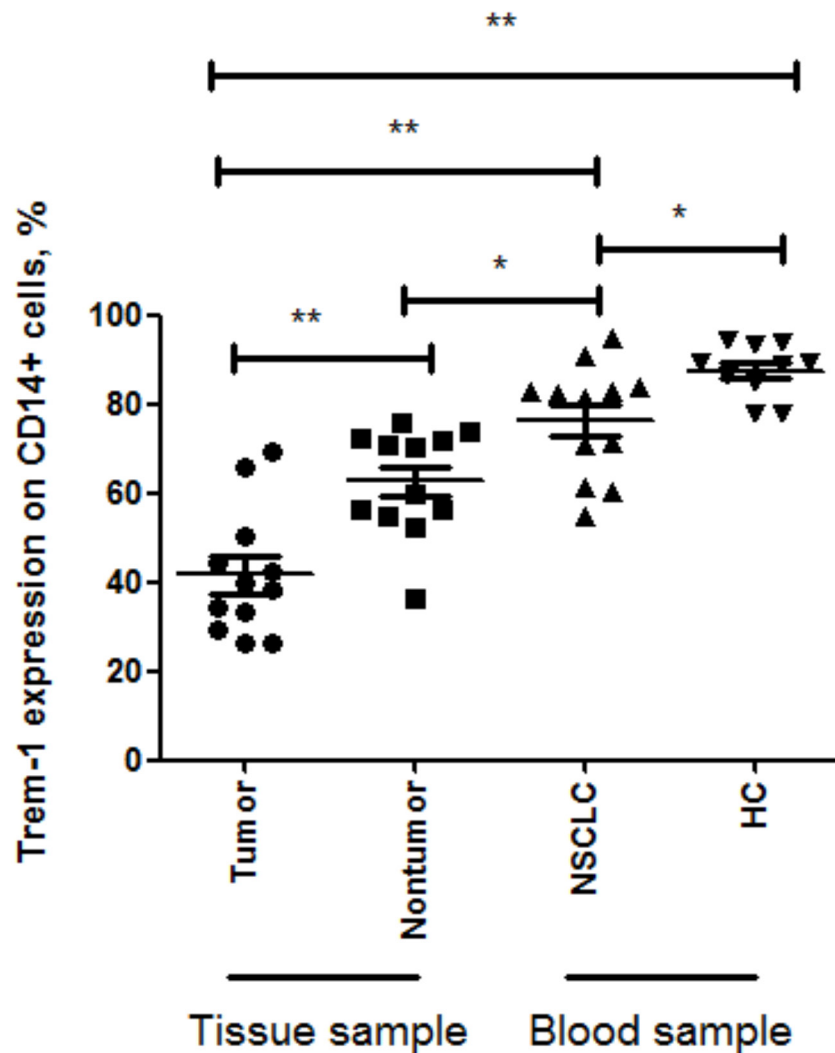


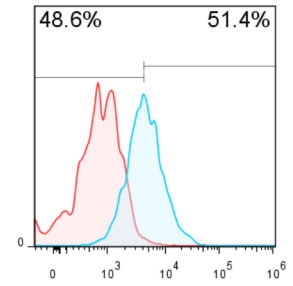
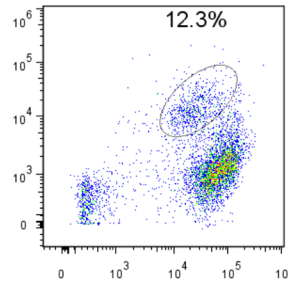
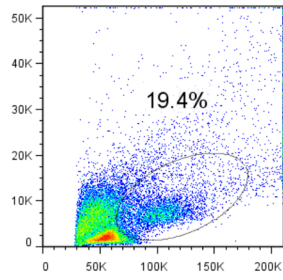
## TREM-1<sup>low</sup> is a novel characteristic for tumor-associated macrophages in lung cancer

### SUPPLEMENTARY FIGURES

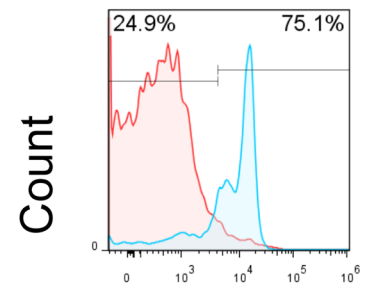
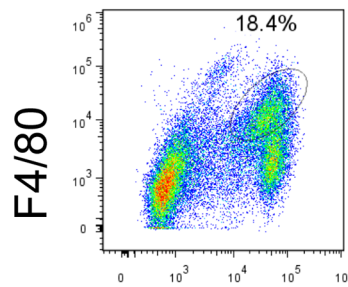
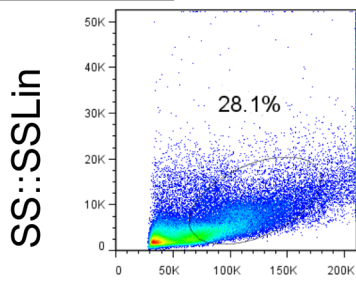


**Supplementary Figure S1: Analysis of TREM-1 on blood or tissue-infiltrating monocytes/macrophages.** Representative dot plots and summarized data. Mann Whitney test was performed and data are presented as mean  $\pm$  SEM. \* represents  $p < 0.05$ , \*\* represents  $p < 0.01$ .

### Spleen



### Tumor



FS::FSLin

CD11b

TREM-1

**Supplementary Figure S2: Strategy for TREM-1 detection on monocytes/macrophages in mice.** Flow cytometric analysis of TREM-1 expression on monocytes/macrophages of spleen or tumor tissues. Single-cell suspension was labeled with CD11b and F4/80. TREM-1 was detected (right flow diagram, right peak) and IgG was used as a control (right -flow diagram, left peak).