

The impact of DNA damage response gene polymorphisms on therapeutic outcomes in late stage ovarian cancer.

Guffanti F¹, Fruscio R², Rulli E^{3*} and Damia G^{1*}.

¹Department of Oncology, Laboratory of Molecular Pharmacology, IRCCS-Istituto di RicercheFarmacologiche Mario Negri, Milan, Italy.²Clinic of Obstetrics and Gynecology, San Gerardo Hospital, Department of Medicine and Surgery, University of Milan-Bicocca, Italy. ³Department of Oncology, Laboratory of Methodology for Clinical Research, IRCCS-Istituto di RicercheFarmacologiche Mario Negri, Milan, Italy.

Legends to Supplementary Figures

Supplementary Figure 1. Overall survival and Progression Free Survival curves by ATM genotypes.

Supplementary Figure 2. Overall survival and Progression Free Survival curves by ATR genotypes.

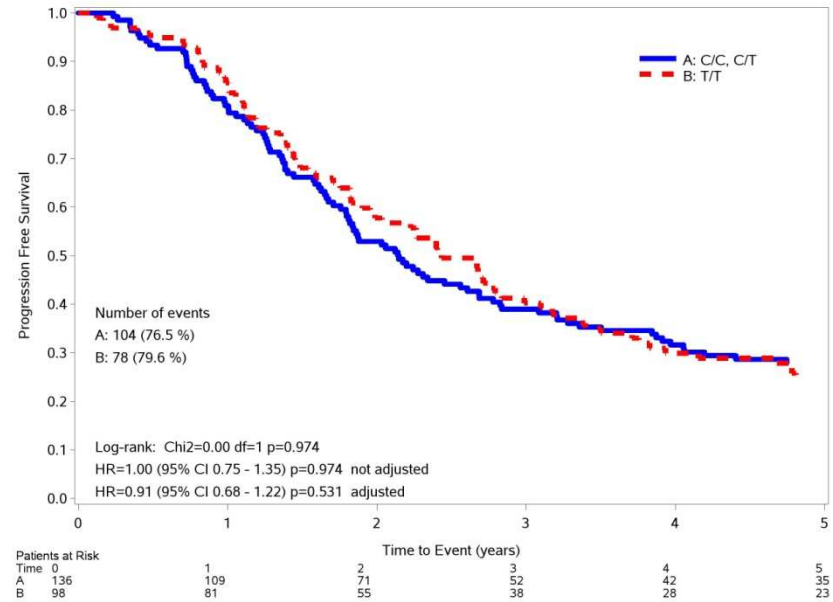
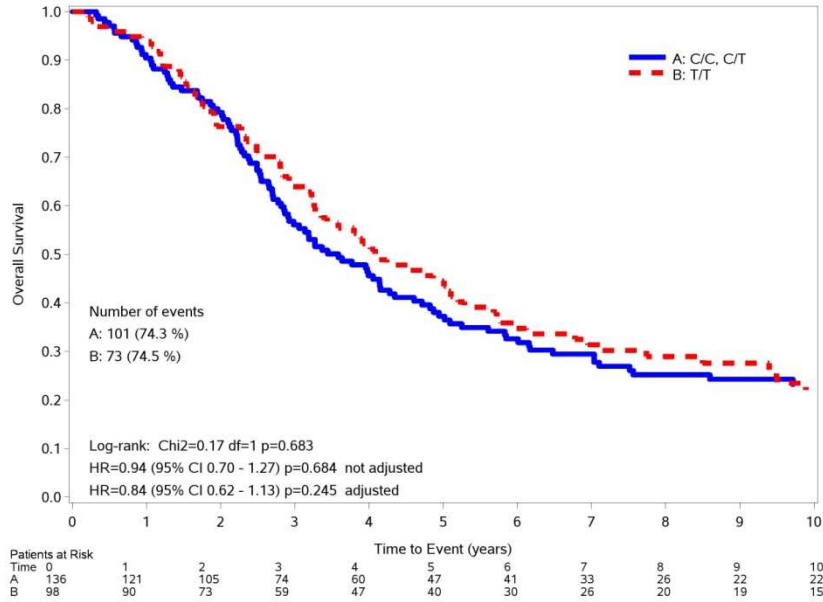
Supplementary Figure 3. Overall survival and Progression Free Survival curves by CHK1 (upper panels) and CHK2 (lower panels) genotypes.

Supplementary Table 1. SNPs evaluated.

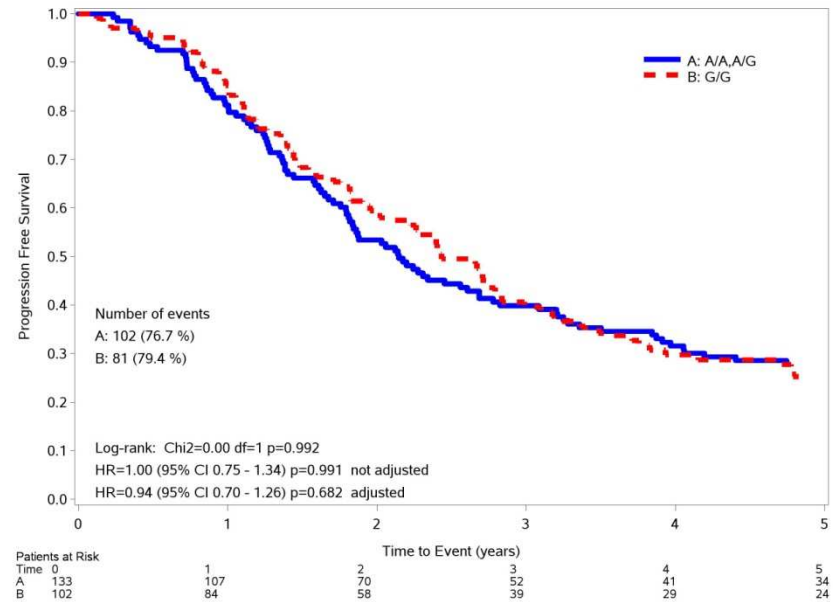
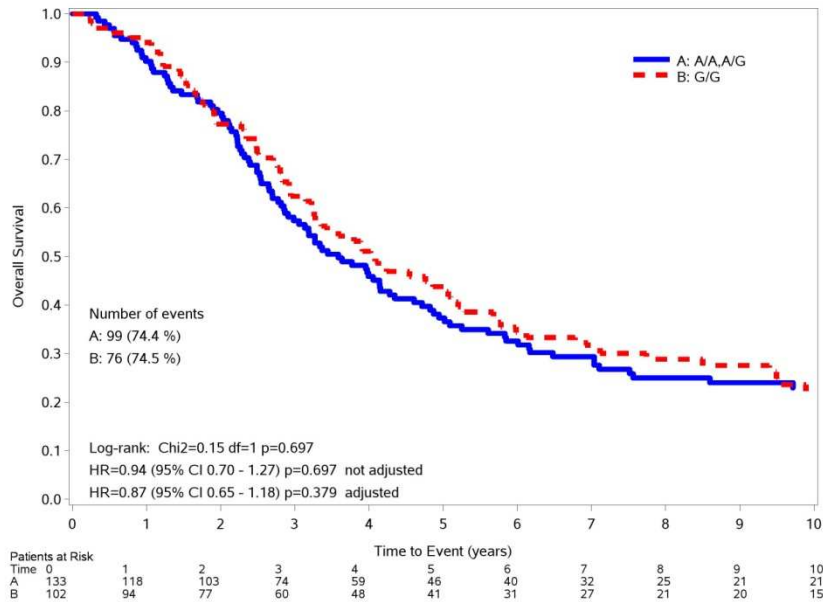
<i>Gene</i>	<i>Chromosome</i>	<i>Most severe consequence</i>	<i>Ref. SNP ID n°</i>	<i>MFA</i>
ATM	11	T to C transition: intron variant	rs664677	0,35 (C)
	11	G to A transition: 3 prime UTR variant	rs664143	0,37 (A)
ATR	3	C to T transition: missense variant	rs2229032	0,10 (T)
	3	G to A transition: missense variant	rs2227928	0,40 (A)
CHEK1	11	G to A transition: intron variant	rs521102	0,44 (A)
CHEK2	22	T to C transition: intron variant	rs2267130	0,31 (C)
CDK12	17	G to A transition: 3 prime UTR variant	rs1054488	0,22 (A)

MFA= minor allele frequency

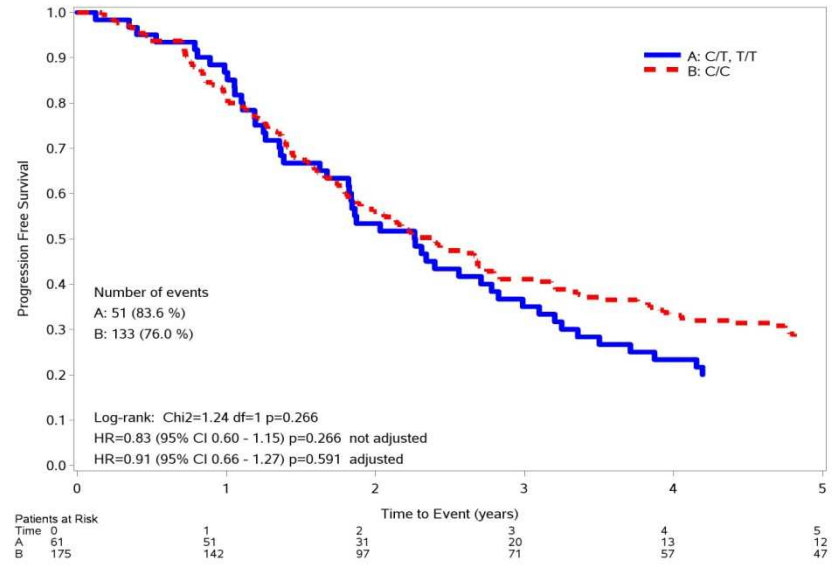
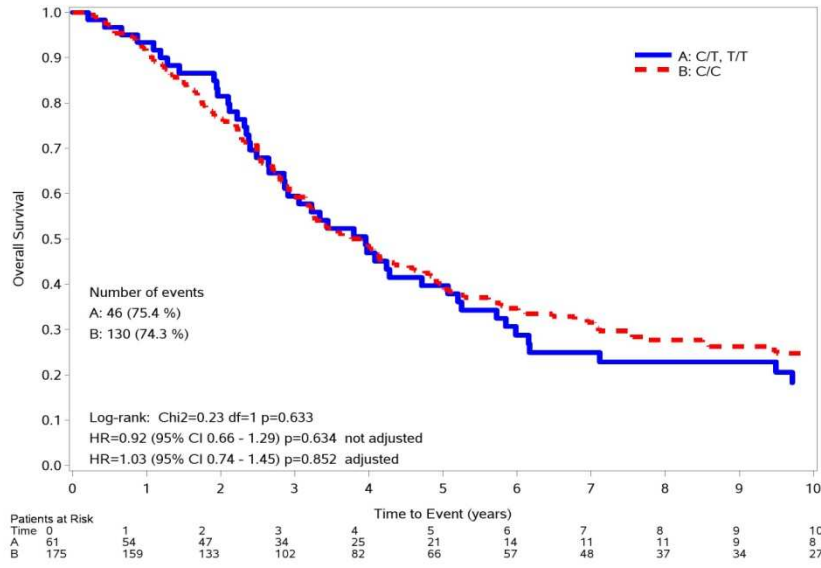
ATM rs664677



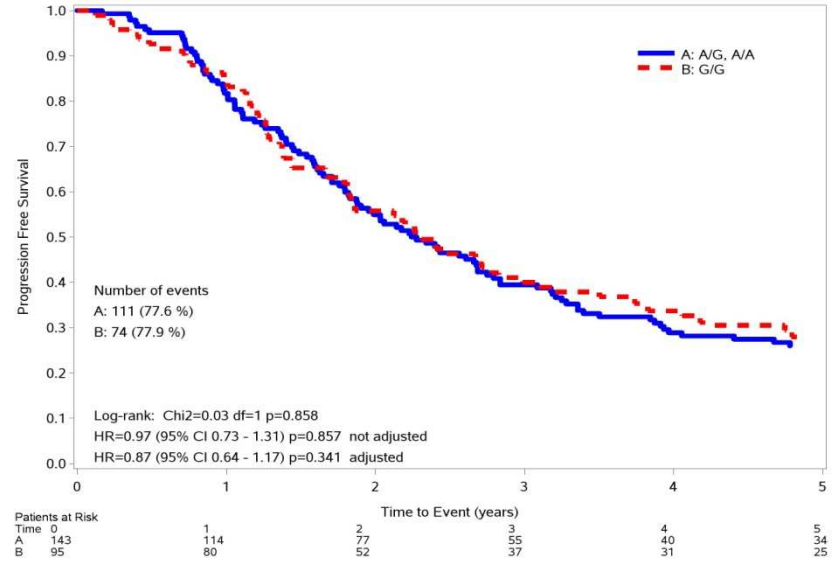
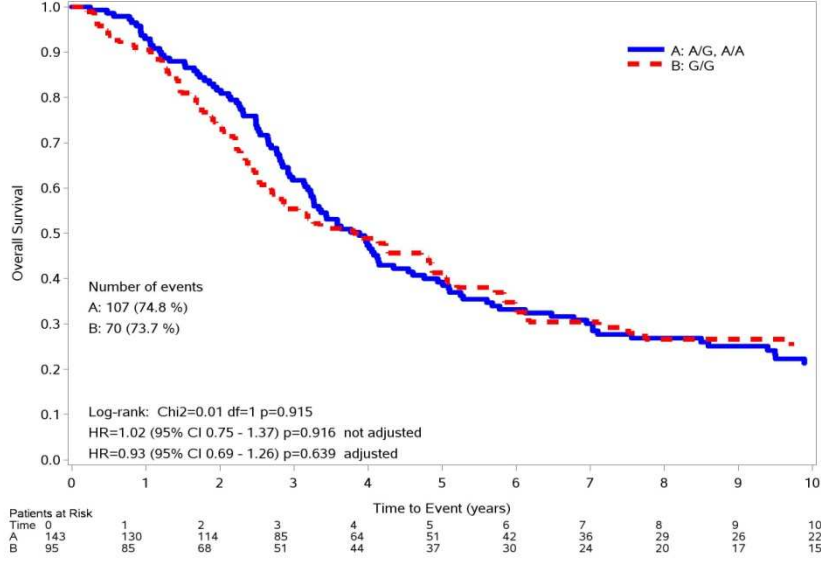
ATM rs664143



ATR rs2229032

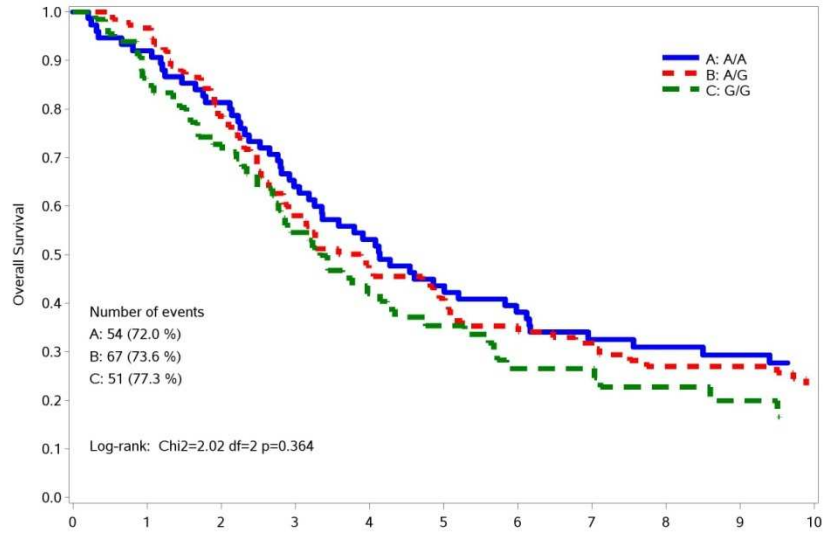


ATR rs2227928

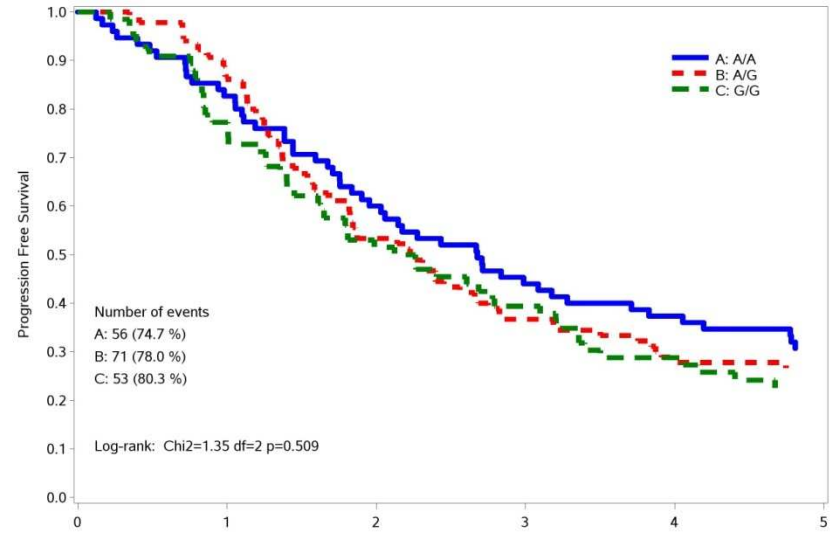


Supplementary Figure 2

CHEK1 rs521102

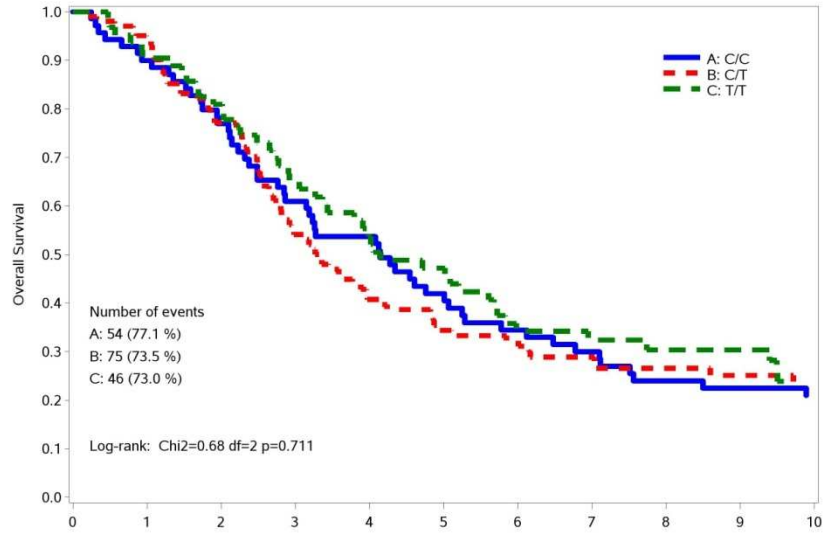


Patients at Risk	Time to Event (years)										
Time	0	1	2	3	4	5	6	7	8	9	10
A	75	68	60	47	38	31	27	20	18	17	14
B	91	85	68	50	40	35	29	26	22	20	18
C	66	55	47	34	25	19	15	13	7	5	5

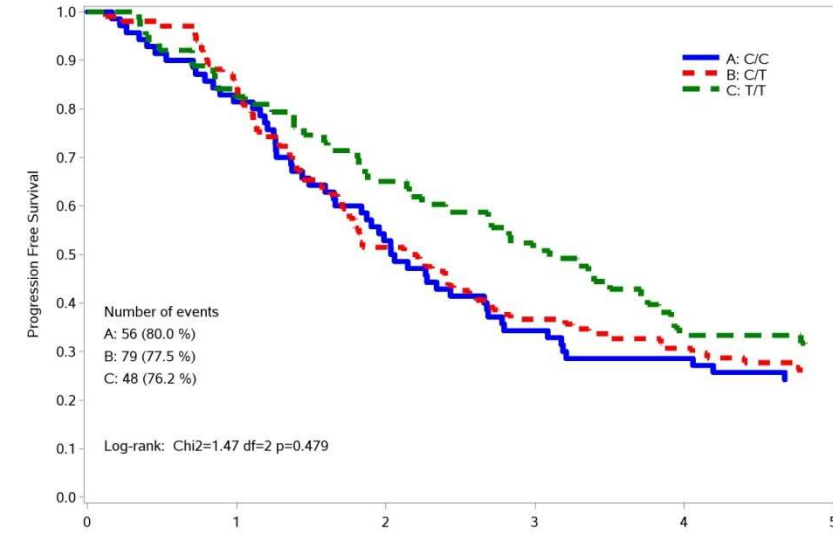


Patients at Risk	Time to Event (years)					
Time	0	1	2	3	4	5
A	75	61	44	32	27	22
B	91	77	47	32	24	23
C	66	50	33	25	18	12

CHEK2 rs2267130



Patients at Risk	Time to Event (years)										
Time	0	1	2	3	4	5	6	7	8	9	10
A	70	61	52	41	36	27	22	19	15	14	14
B	102	94	76	52	38	31	28	23	17	14	12
C	63	56	50	40	32	28	18	15	15	13	11



Patients at Risk	Time to Event (years)					
Time	0	1	2	3	4	5
A	70	56	36	23	19	16
B	102	85	51	36	30	24
C	63	51	40	31	20	18

Supplementary Figure 3