

Supplementary informations

Validation of plasma microRNAs as biomarkers for myotonic dystrophy type 1.

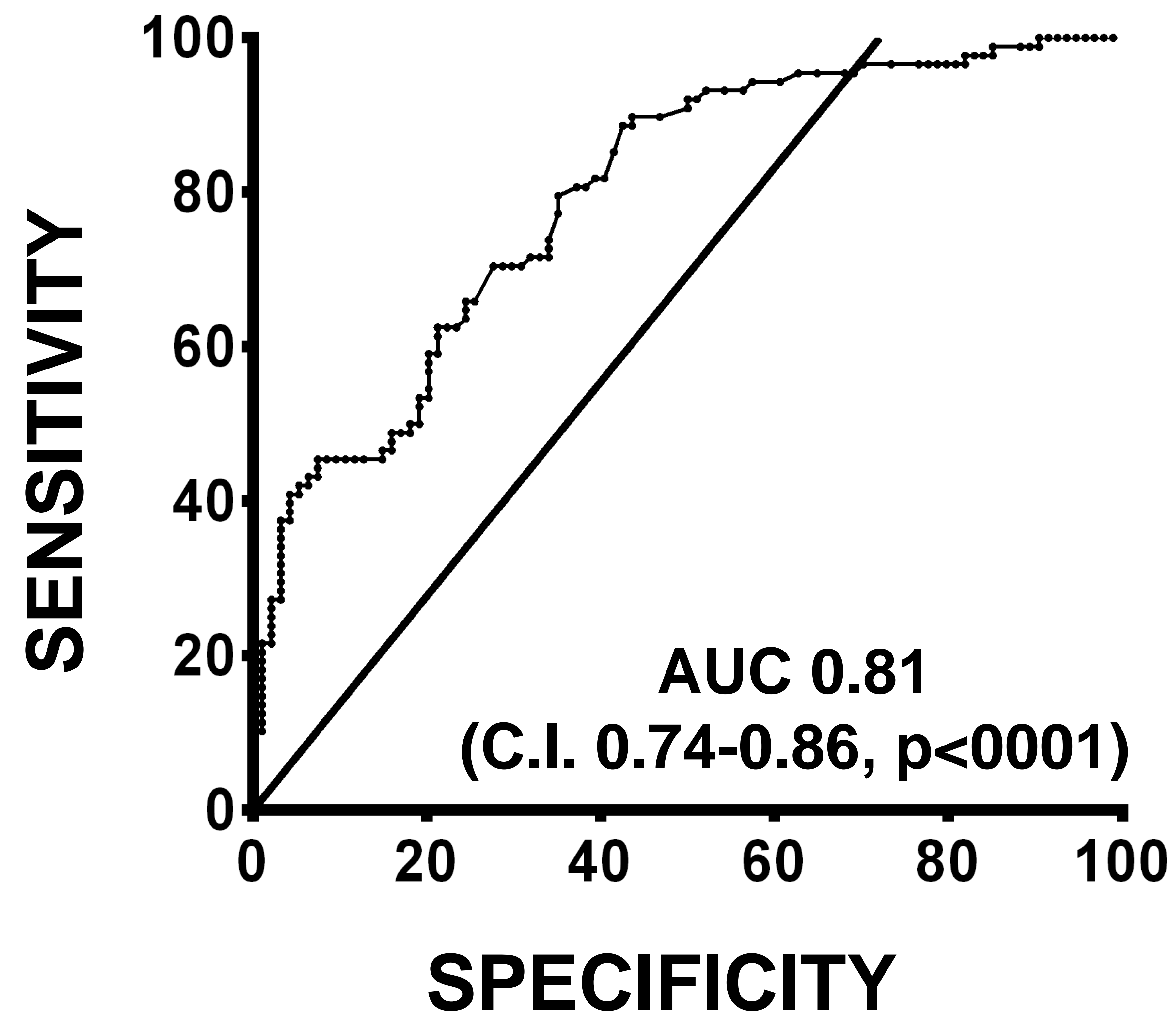
Perfetti A., Greco S., Cardani R., Fossati B., Cuomo G., Valaperta R., Ambrogi F.,

Cortese A., Botta A., Mignarri A., Santoro M., Gaetano C., Costa E., Dotti M.T.,

Silvestri G., Massa R., Meola G., Martelli F.

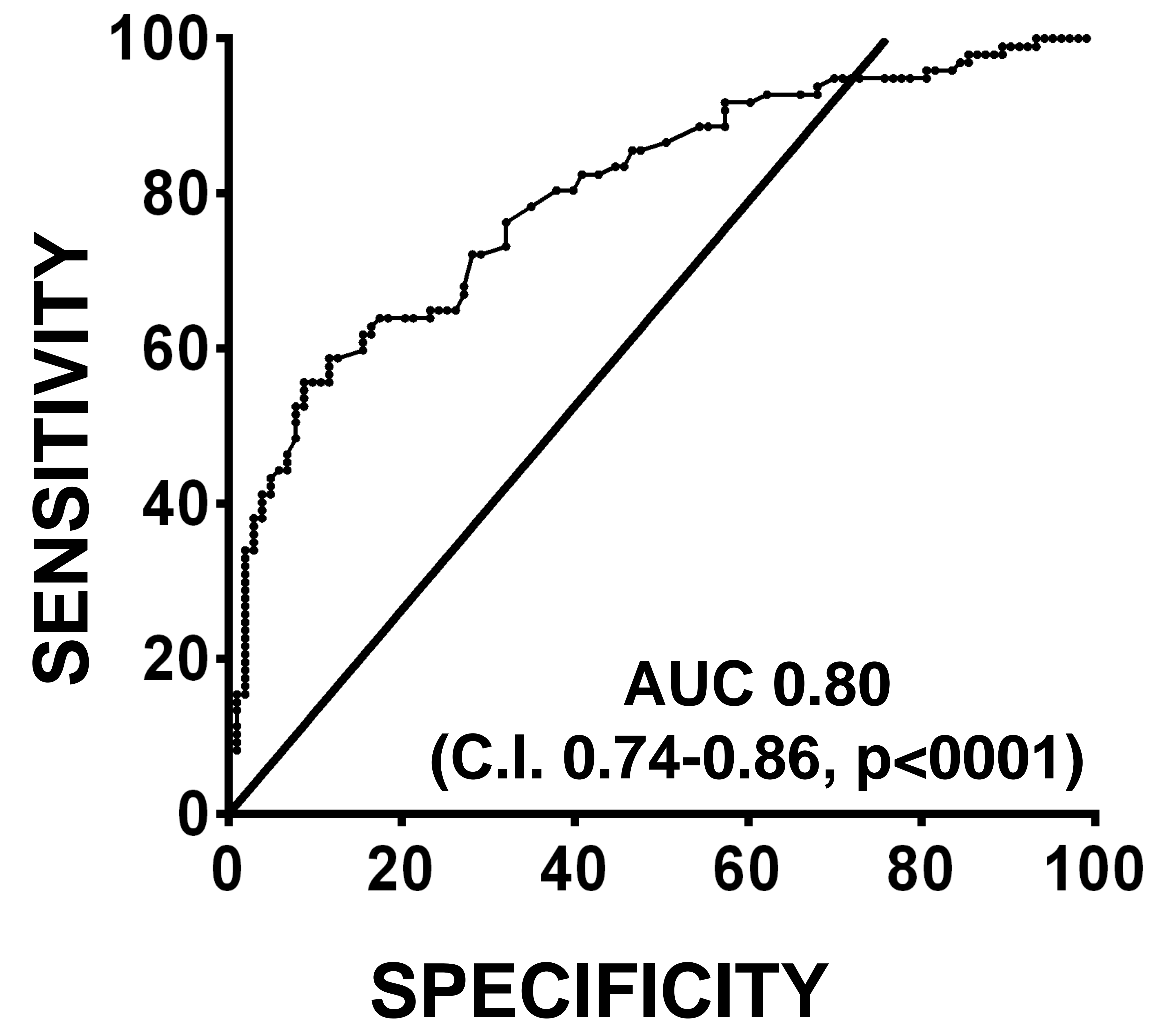
a

miR-1



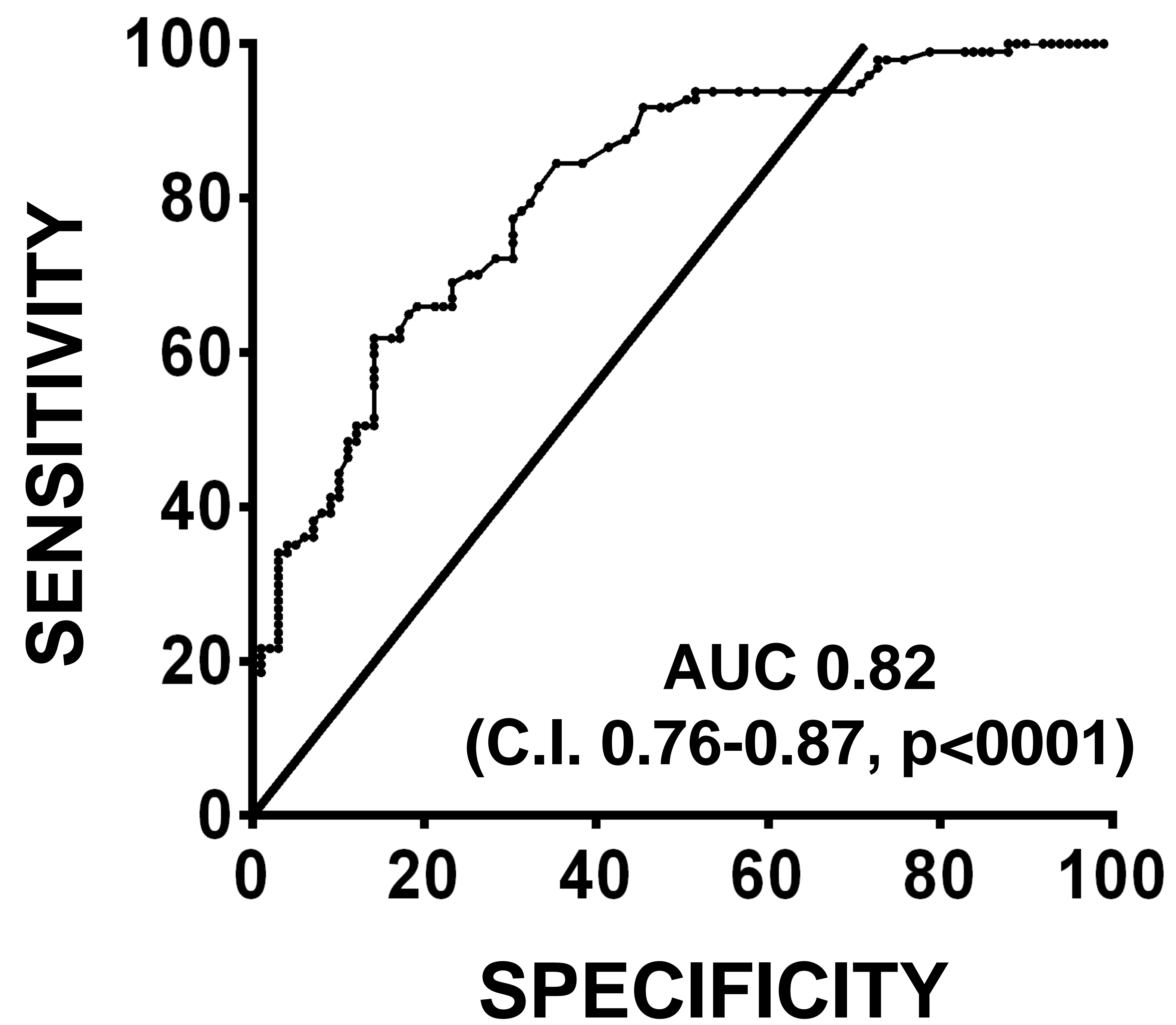
b

miR-133a



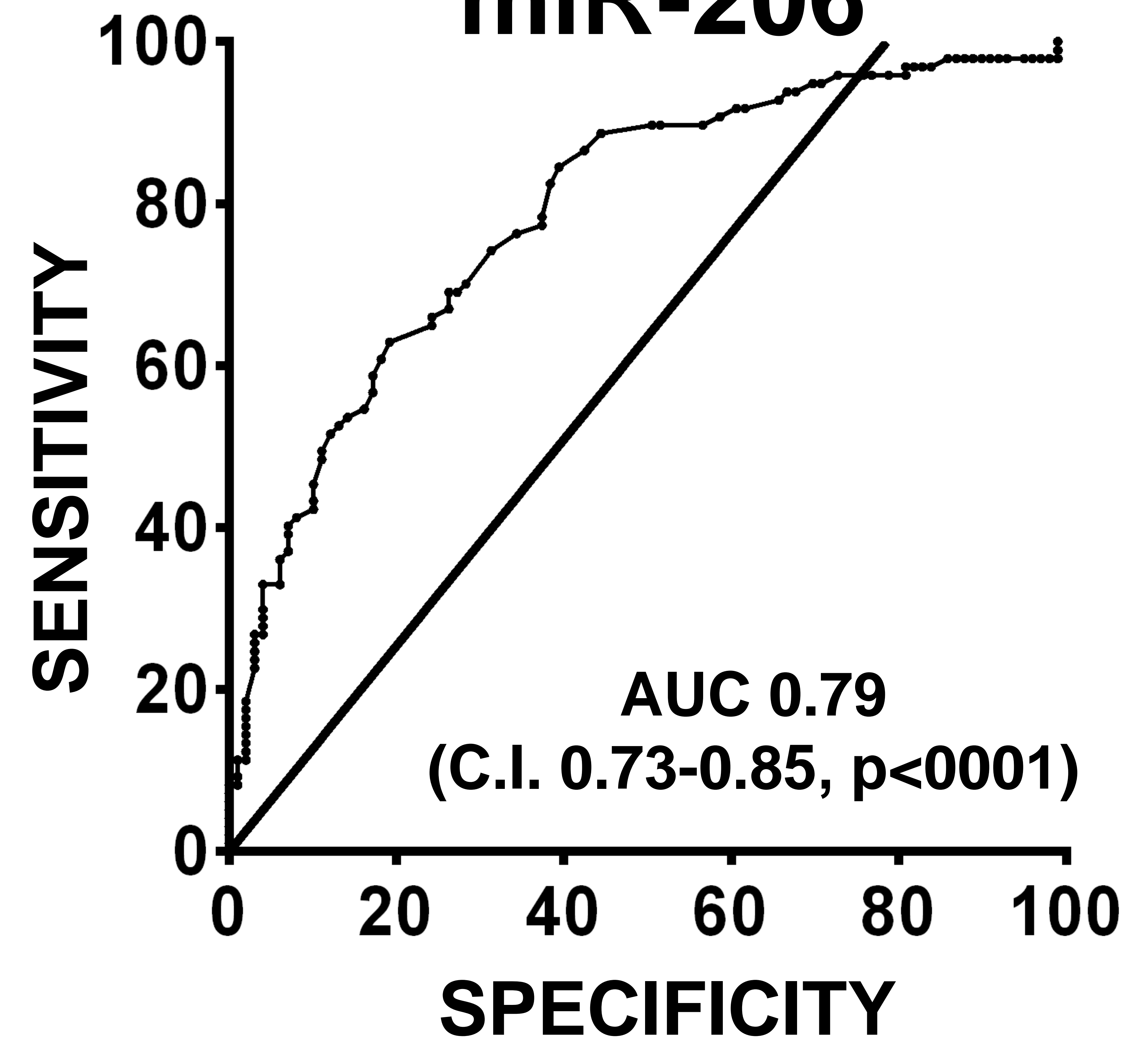
c

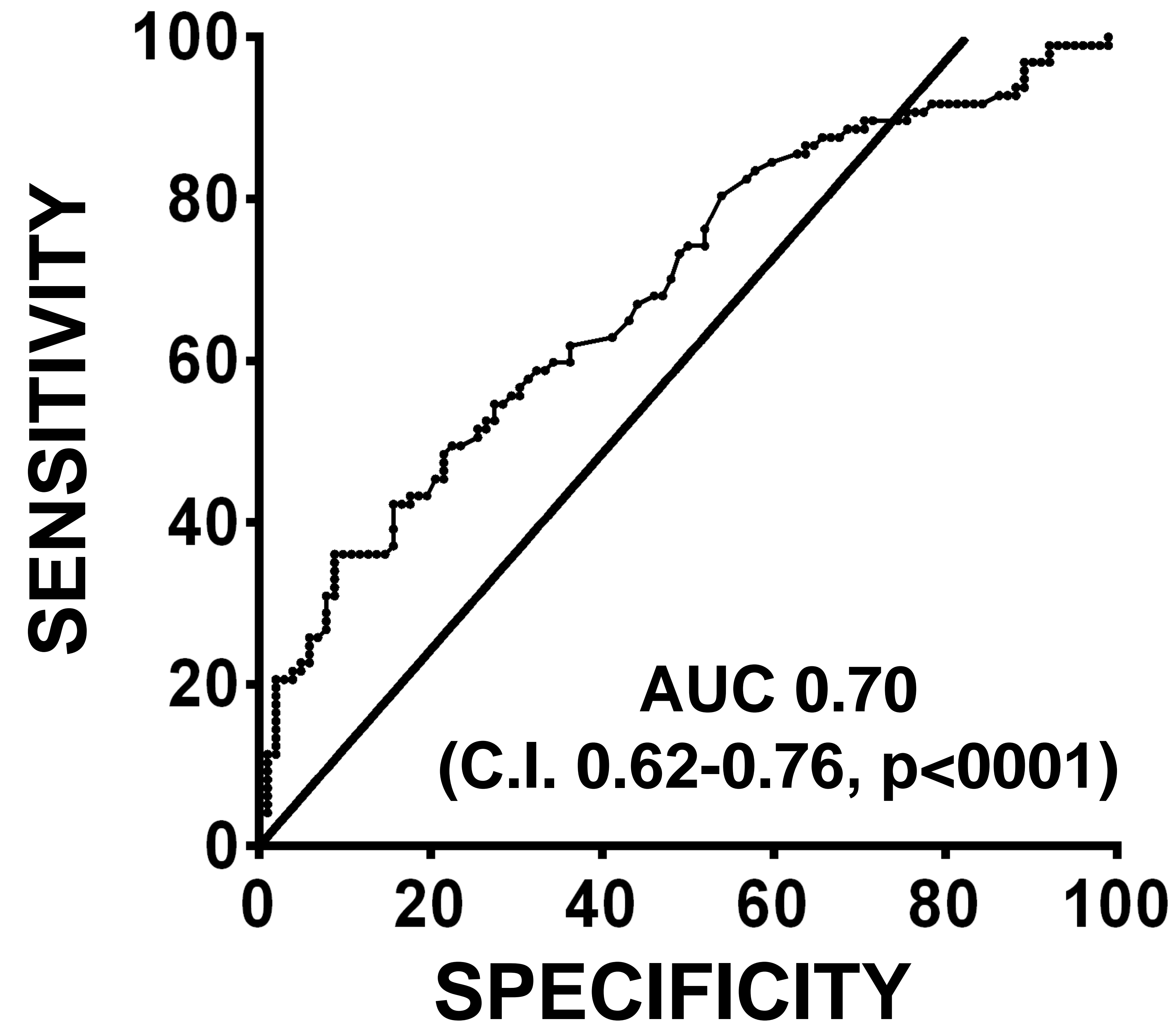
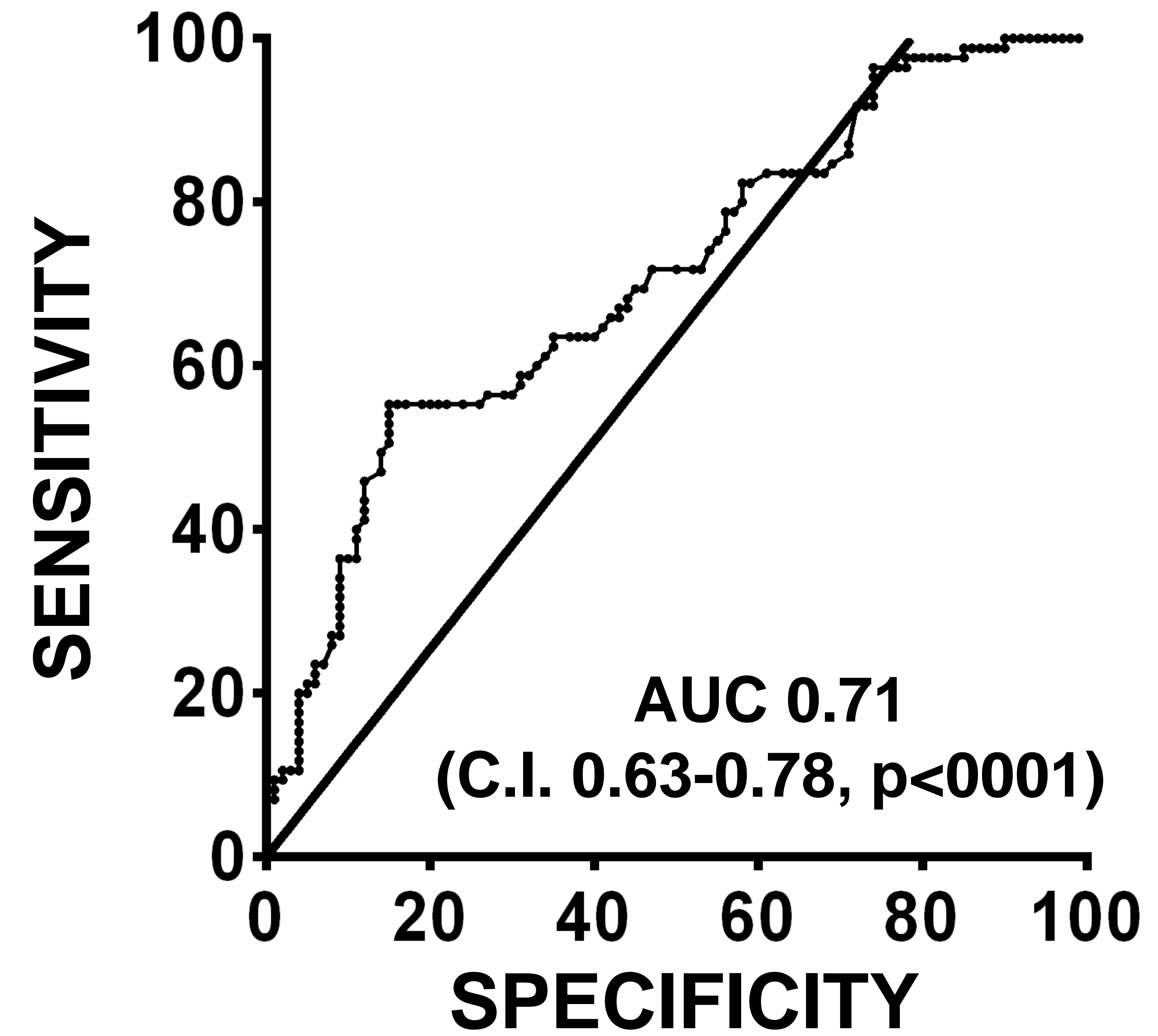
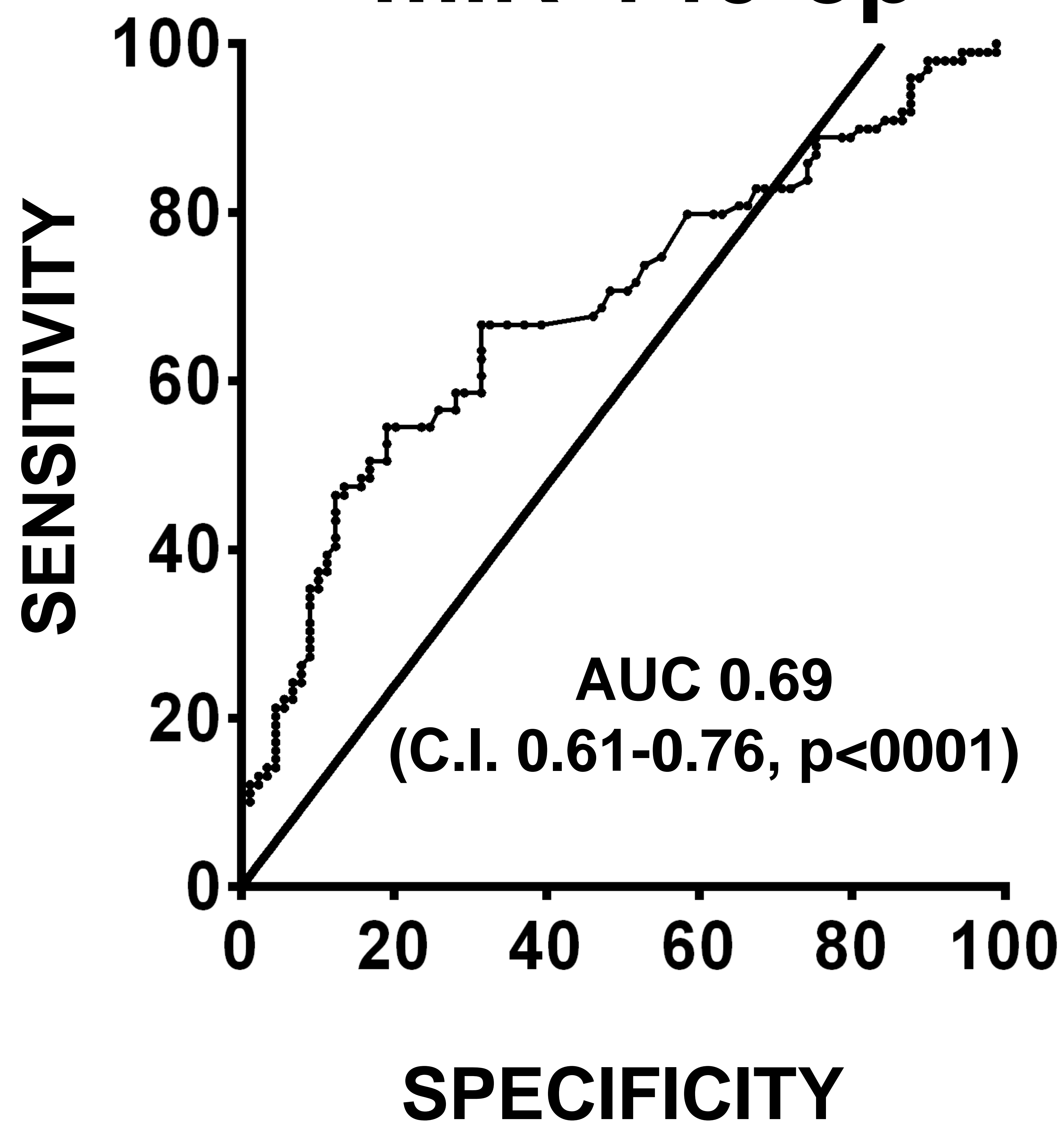
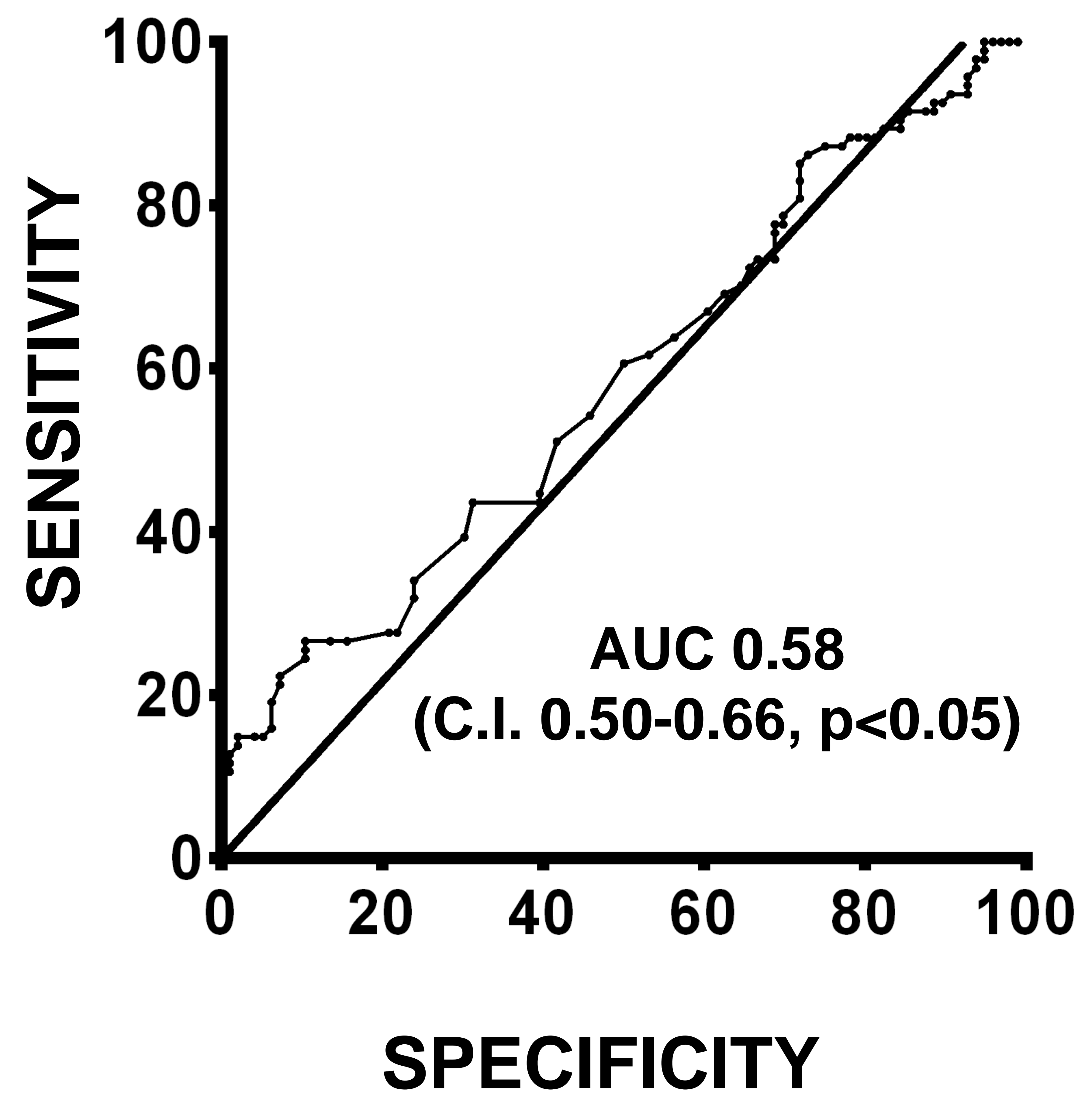
miR-133b

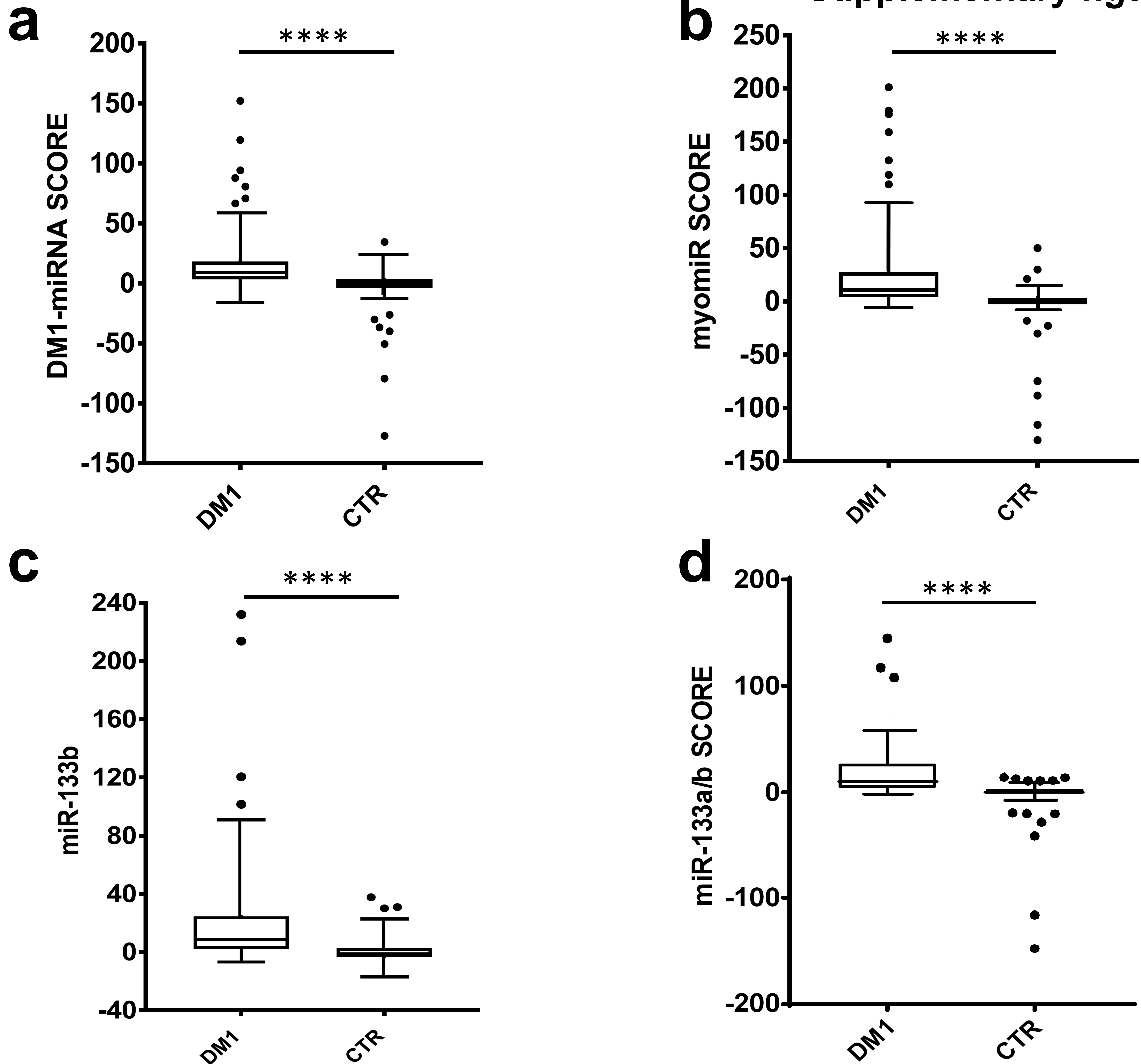


d

miR-206



e**miR-454****f****miR-574****g****miR-140-3p****h****miR-27b**



Supplementary figure S2. Outliers identification by Tukey's test . DM1-miRNA score (a), myomiR score (b), miR-133b (c) and miR-133a/b score (d) are represented after exclusion of outlier samples (individual dots) identified by Tukey's test. After outliers exclusion all differences were statistically significant (**** $p < 0.0001$).

Supplementary table S3

CLINICAL CHARACTERISTICS	DM2, n=30
Age at sampling (average \pm se)	54.7 \pm 2.7
Age of onset (average \pm se)	41.5 \pm 2.4
Sex (male/female)	13/17
MRC megascore	143.5 \pm 1.4
Myotonia (%)	54
Glucose (70-110 mg/dl)	112.3 \pm 13.6
Cholesterol (<200 mg/dl)	230.1 \pm 9.6
CK (male<190 mg/dl, female <125 mg/dl)	Male: 313.9 \pm 86.6 Female: 353.6.6 \pm 95.0
Arrhythmia (%)	12
Cataract (%)	32
ECG-QRS duration (60-110 ms)	99.1 \pm 4.5

Supplementary table S5

Intra-assay coefficients of variability (CV)

	AVERAGE CV %
miR-1	1,5
miR-133a	1,1
miR-133b	1,2
miR-140	1,0
miR-206	1,2
miR-27b	1,9
miR-454	1,2
miR-574	1,3
miR-39	1,7
miR-106a	2,0
mi-17-5p	1,9

DM1, n=103; CTR, n=111