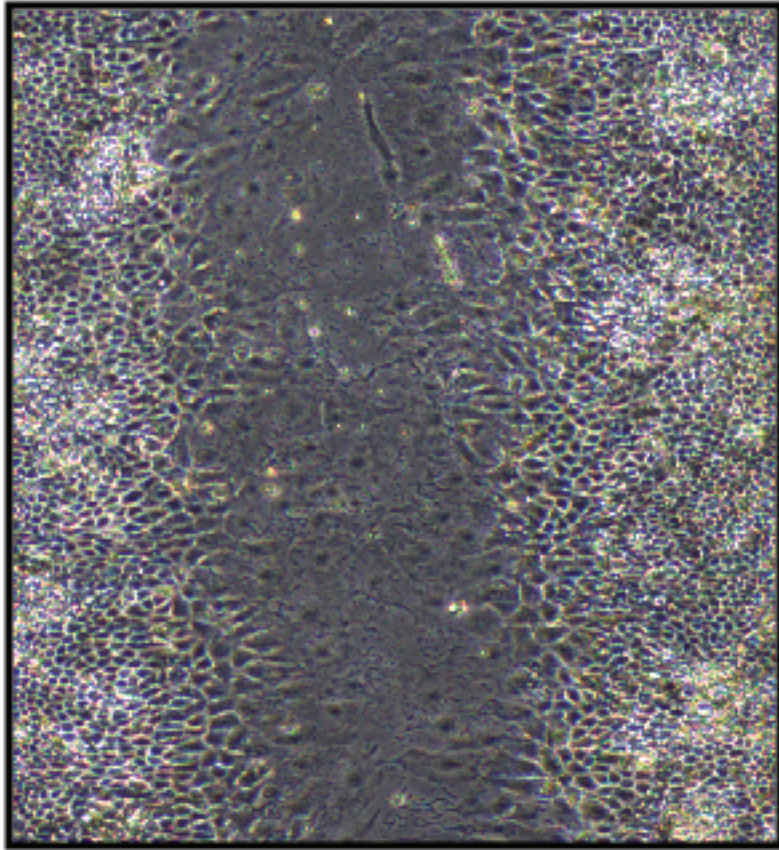
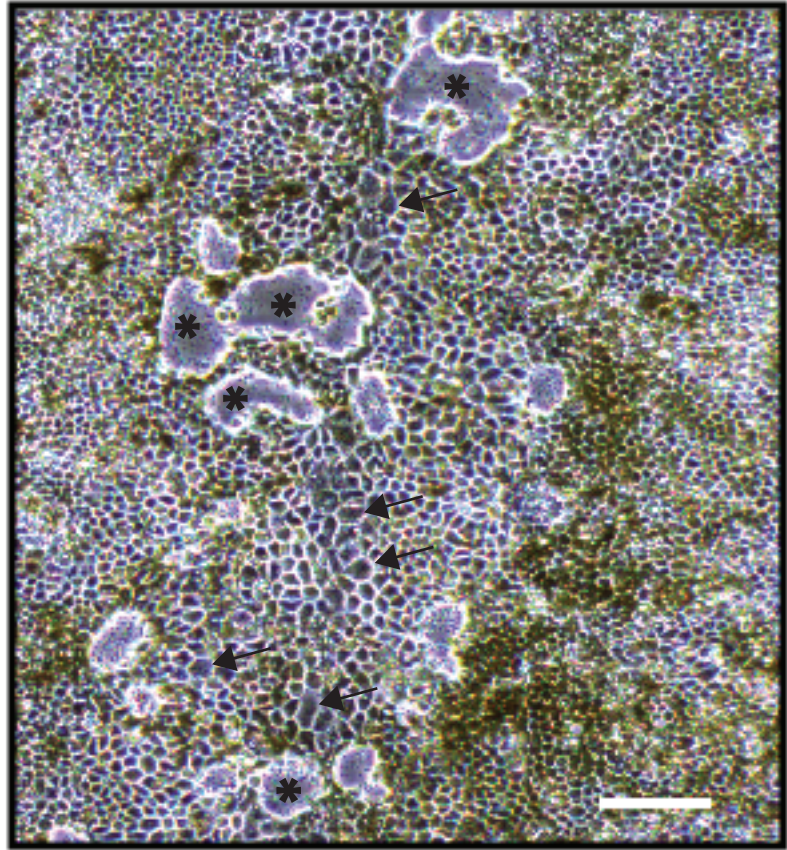


ROCKIV day 3



ROCKIV day 30



Supplemental Figure 1. ROCK2 inhibited cells, 3 days and 30 days following scratch. Cells appear flatter and larger, less epithelial in at day 3 (left panel). Cells fail to regain typical RPE size, and remain larger with some areas completely devoid of cells (examples marked by asterisks) at day 30 (right panel, arrows indicate large atypical cells). Scale bar = 200 μ m.