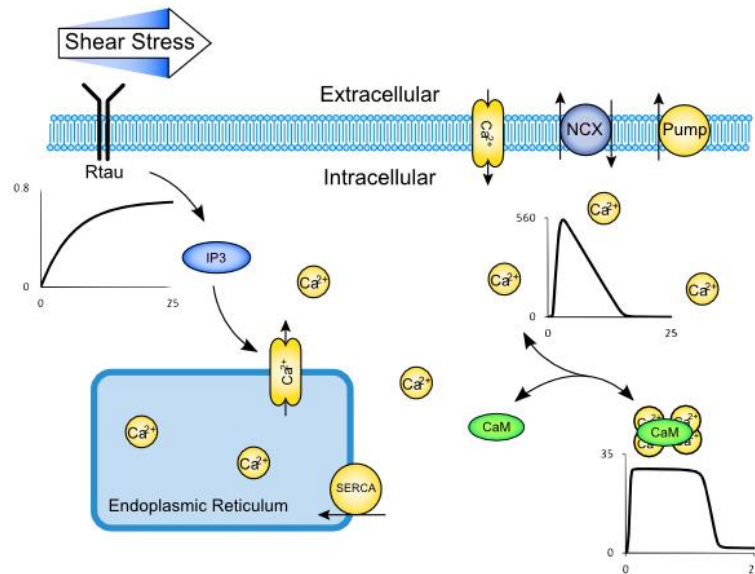


## Signalling Example: Simulation Output (plotted in Figure 1)

Figure 1 (reproduced in Figure S2-1) contained three traces. In order to obtain these traces, simulate the model found in 'ASignallingExample.cellml' for 25 seconds.



**Figure S2-1: Signalling Example Schema and Output (reproduced from Figure 1)**

The meaning and units of the y-axis for each trace (in order from top to bottom and left to right) is given in Table S2-1. The name of the CellML variable used in the plot is also given.

| Meaning                                     | Units         | CellML variable                              |
|---|---------------|--|
| Proportion of activated receptor            | Dimensionless | ShearStress_to_IP3:Rtau:amount               |
| Concentration of free intracellular calcium | Micro-molar   | Calcium_Handling:Ca_if:concentration         |
| Concentration of activated calmodulin       | Micro-molar   | Calmodulin_Activation:CaM_star:concentration |

**Table S2-1. Trace Information for Figure S2-1.**