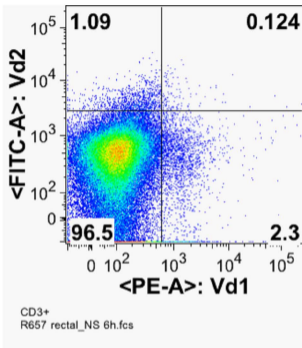


Supplemental Table I. Necropsied SIV-infected rhesus macaques

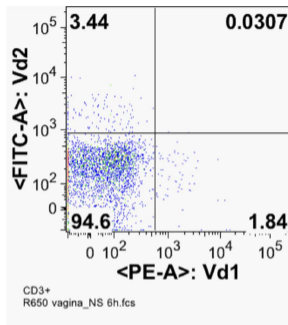
<b>Macaque</b>	<b>Tissue collected</b>	<b>Sex</b>	<b>Immunization history prior to infection</b>	<b>Viral load</b>	<b>Weeks post-infection</b>
P180	Blood	F	Ad-SIV/Env in MF59 <sup>a</sup>	50	23
R651	Blood	F	Ad-SIV/Env in MF59	1563628	39
G433	Blood	F	Ad-SIV/Env in MPL-SE <sup>b</sup>	12620	68-76
G434	Blood	F	Ad-SIV/Env in MPL-SE	10865797	68-76
G418	Blood	M	Ad-SIV/Env in MPL-SE	594	68-76
G414	Blood	M	Ad-SIV/Env in MPL-SE	6949	68-76
G408	Blood	M	Ad-SIV/Env in MPL-SE	12803	68-76
G407	Blood	M	Ad-SIV/Env in MPL-SE	103520	68-76
R249	Blood	M	Ad-SIV/Env in MF59	50	31
R254	Blood	M	Ad-SIV/ALVAC-SIV/gp120 in alum <sup>c</sup>	1685512	14
R277	Blood	M	SIV gp120 in MF59 <sup>c</sup>	1927722	14
G423	Blood	M	naïve <sup>b</sup>	50	68-76
M903	Blood	M	alum only <sup>d</sup>	193383	27
R407	Blood	M	Ad vector + MF59 <sup>a</sup>	7192380	39
P180	FRT / rectal	F	Ad-SIV/Env in MF59	50	44
R652	FRT / rectal	F	Ad-SIV/Env in MF59	72485	40
R248	FRT / rectal	F	Ad-SIV/Env in MF59	1208963	48
R651	FRT / rectal	F	Ad-SIV/Env in MF59	2478356	52
R663	FRT / rectal	F	Ad-SIV/Env in MF59	50	48
R647	FRT / rectal	F	Ad-SIV/Env in MF59	156	48
R280	FRT / rectal	F	Ad-SIV/Env in MF59	482	44
R666	FRT / rectal	F	Ad-SIV/Env in MF59	14246	45
R650	FRT / rectal	F	Ad-SIV/Env in MF59	15244	50
R660	FRT / rectal	F	Ad vector + MF59	21099	50
R645	rectal	M	Ad-SIV/Env in MF59	50	52
P602	rectal	M	Ad-SIV/Env in MF59	18429	51
R659	rectal	M	Ad-SIV/Env in MF59	443914	50
R249	rectal	M	Ad-SIV/Env in MF59	6178	51
R657	rectal	M	Ad-SIV/Env in MF59	190803	49
R407	rectal	M	Ad vector + MF59	7298622	52

<sup>a</sup>Tuero et al. (37)<sup>b</sup>Xiao et al. (38)<sup>c</sup>Franchini et al., in preparation<sup>d</sup>Pegu et al. (39)

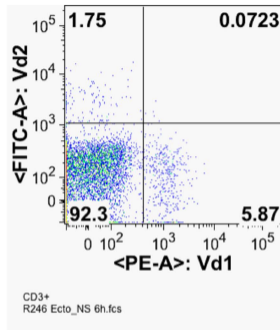
## Rectum



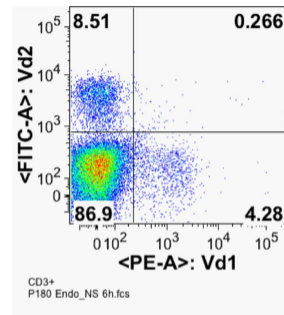
## Vagina



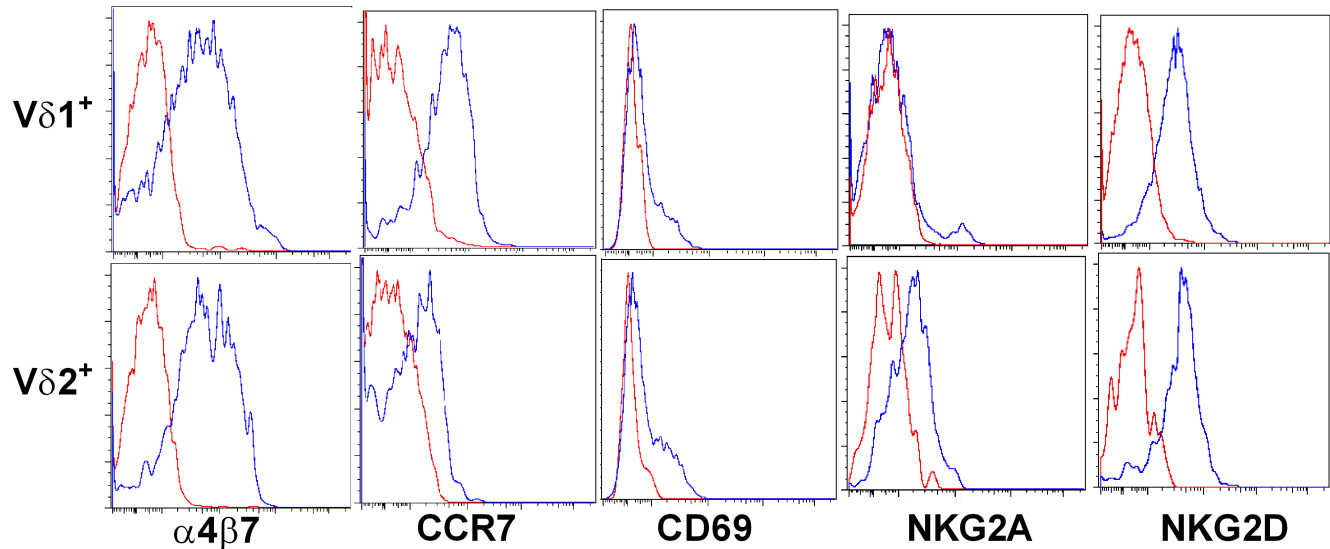
## Ectocervix



## Endocervix



**Supplemental Figure 1.** Representative flow cytometry gating strategy for  $V\delta 1$  and  $V\delta 2$  T cells in mucosal tissue: Rectum, vagina, ectocervix and endocervix. In the singlet, live lymphocytes gate  $CD3^+$  T cells were interrogated for the expression of  $V\delta 1$  or  $V\delta 2$  TCR.



**Supplemental Figure 2.** Expression of homing receptor and activation markers in T cells. Representative histograms showing the expression of  $\alpha$ 4 $\beta$ 7, CCR7, CD69, NKG2A and NKG2D in V $\delta$ 1 and V $\delta$ 2 T cells. Fluorochrome -matched isotype controls are represented by red histograms.