

# **Association of MTDH immunohistochemical expression with metastasis and prognosis in female reproduction malignancies: a systematic review and meta-analysis**

Yongbin Hou<sup>1</sup>, Lihua Yu<sup>1</sup>, Yonghua Mi<sup>1</sup>, Jiwang Zhang<sup>1</sup>, Ke Wang<sup>1</sup>, Liyi Hu<sup>1,2\*</sup>.

1 Department of clinical laboratory, Affiliated Yongchuan Hospital of Chongqing Medical University, Chongqing 402160, China

2 Department of CIK treatment laboratory, Affiliated Yongchuan Hospital of Chongqing Medical University, Chongqing 402160, China

\*Corresponding author:

Email: hlyhhy@163.com

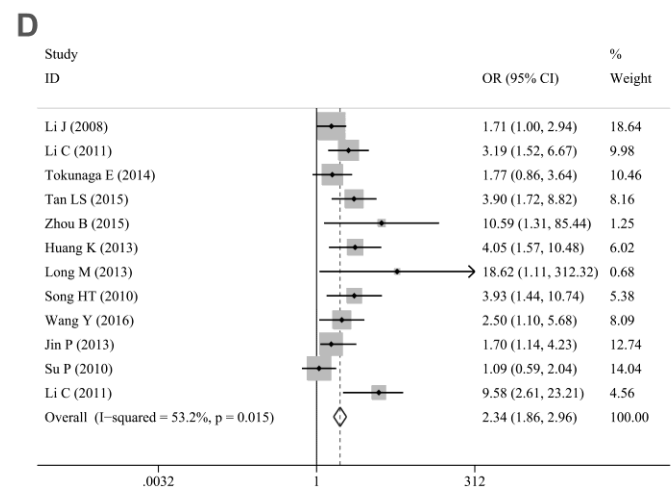
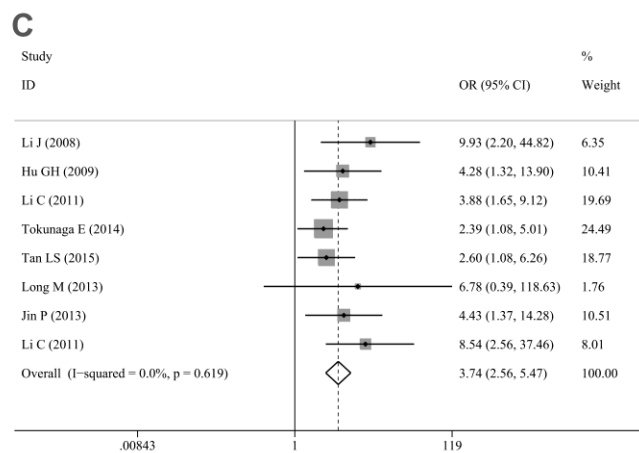
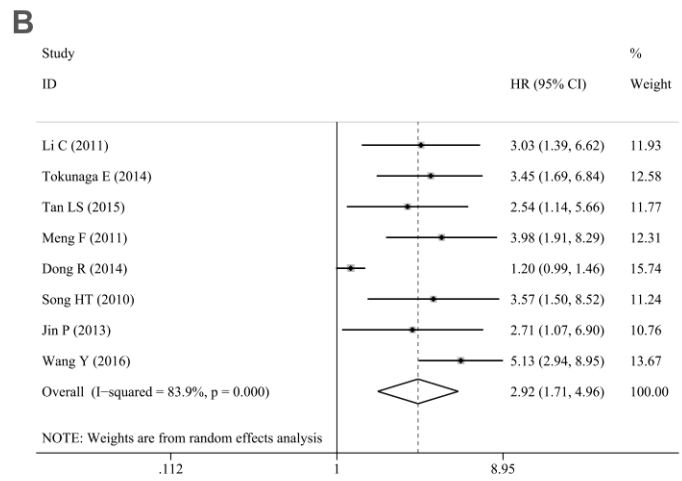
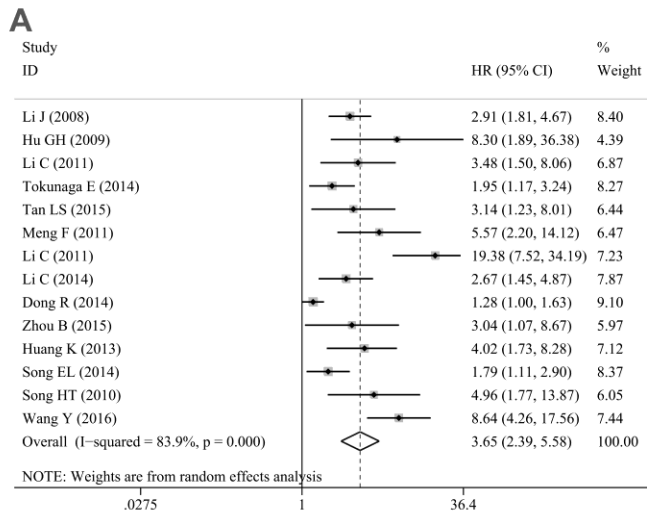


Figure S1. Forest plots of meta-analysis for the association of MTDH with meta-analysis and prognosis in all female reproduction malignancies. (A) mortality; (B) DFS; (C) distant metastasis; (D) lymph node metastasis.

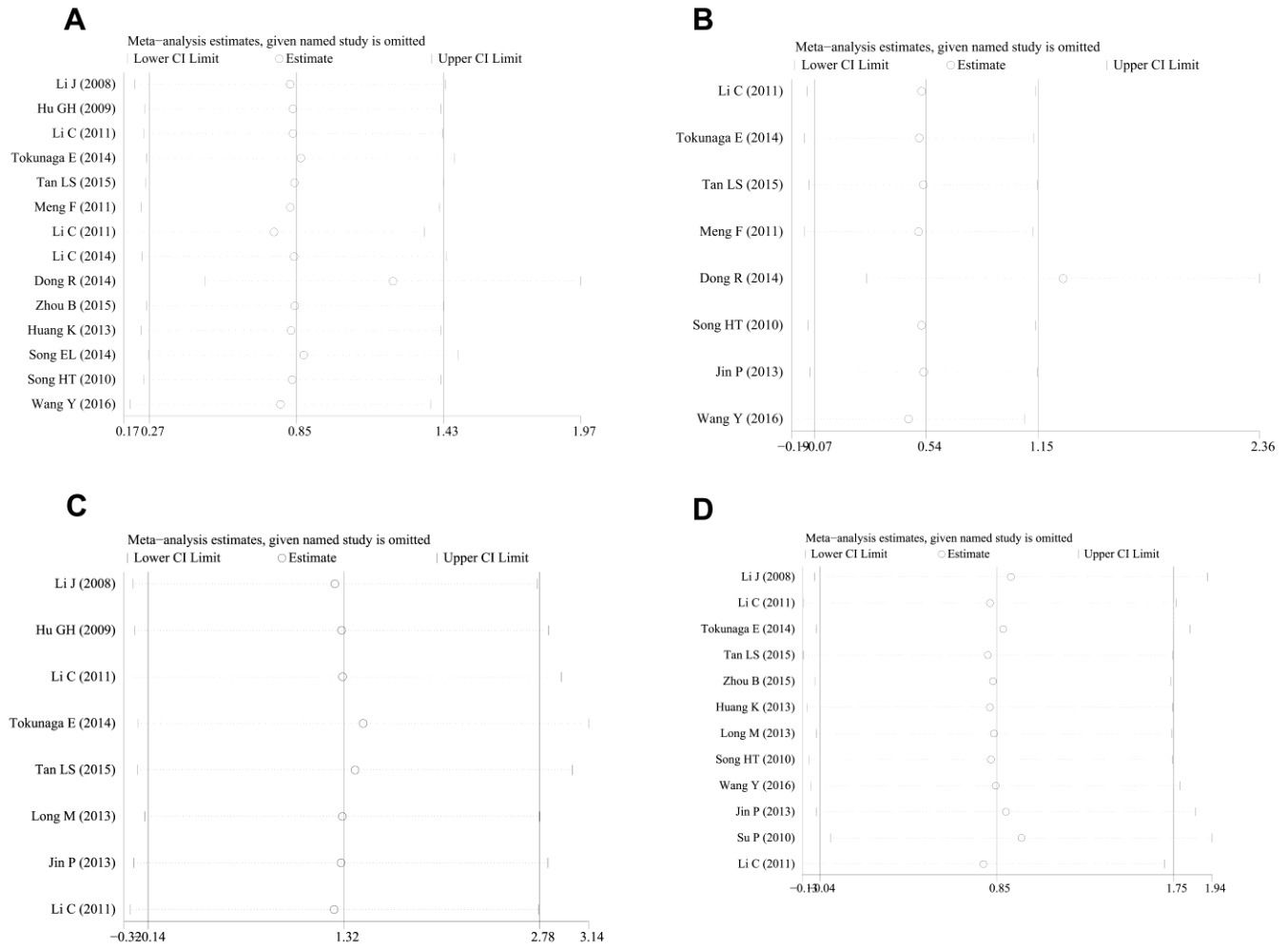


Figure S2. Sensitivity analyses of all included studies in female reproduction malignancies. (A) mortality; (B) DFS; (C) distant metastasis; (D) lymph node metastasis.

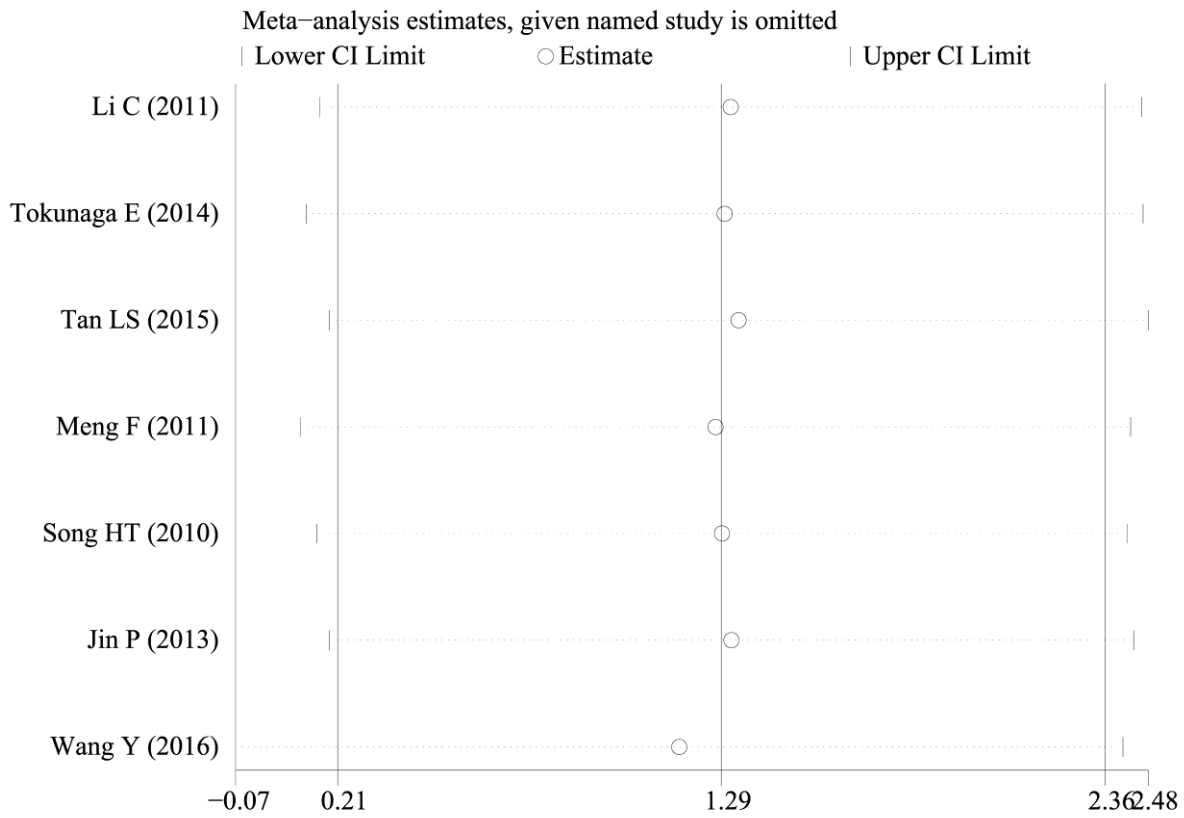


Figure 3S. Sensitivity analyses for DFS after excluding study published by Dong R et al.

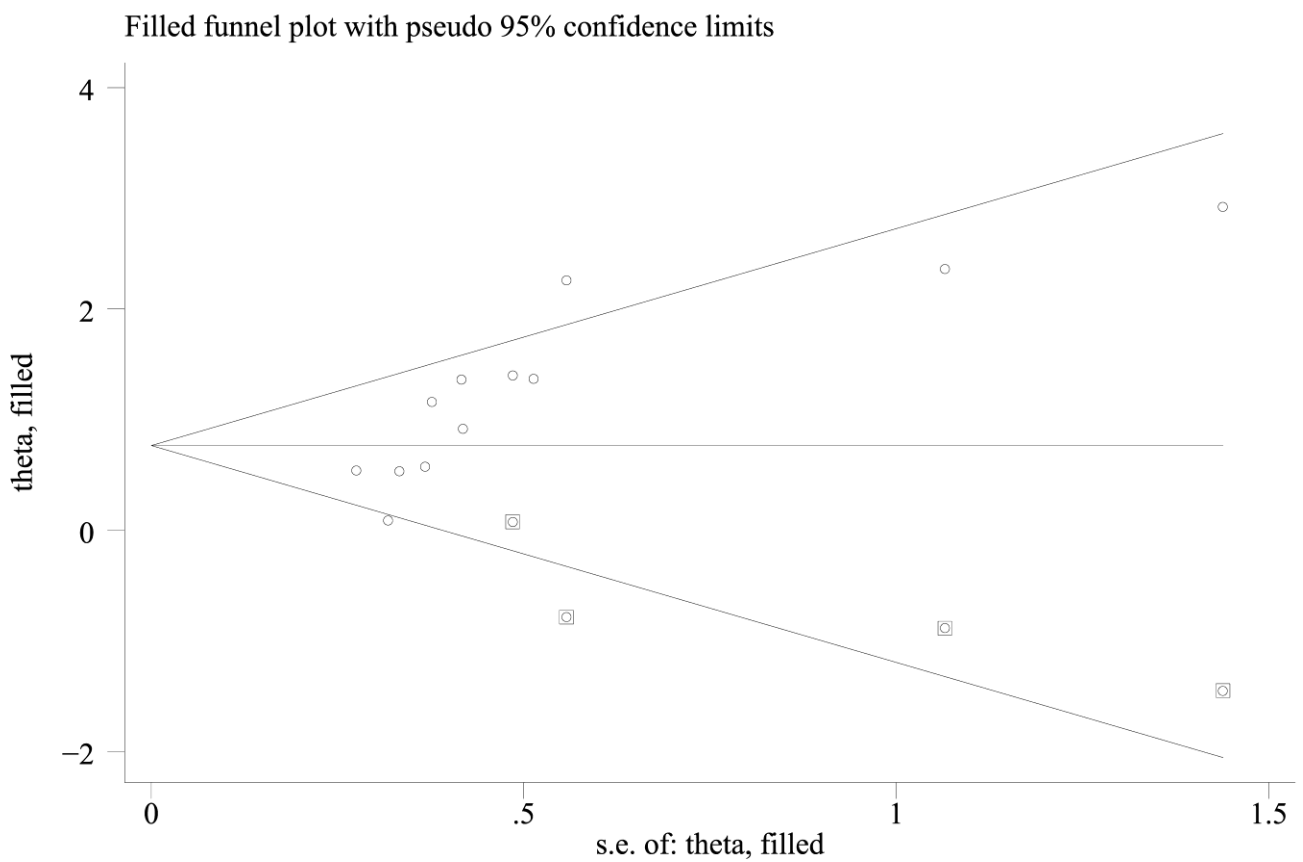


Figure S4. Funnel plot for lymph node metastasis group after enrolling missing studies.

