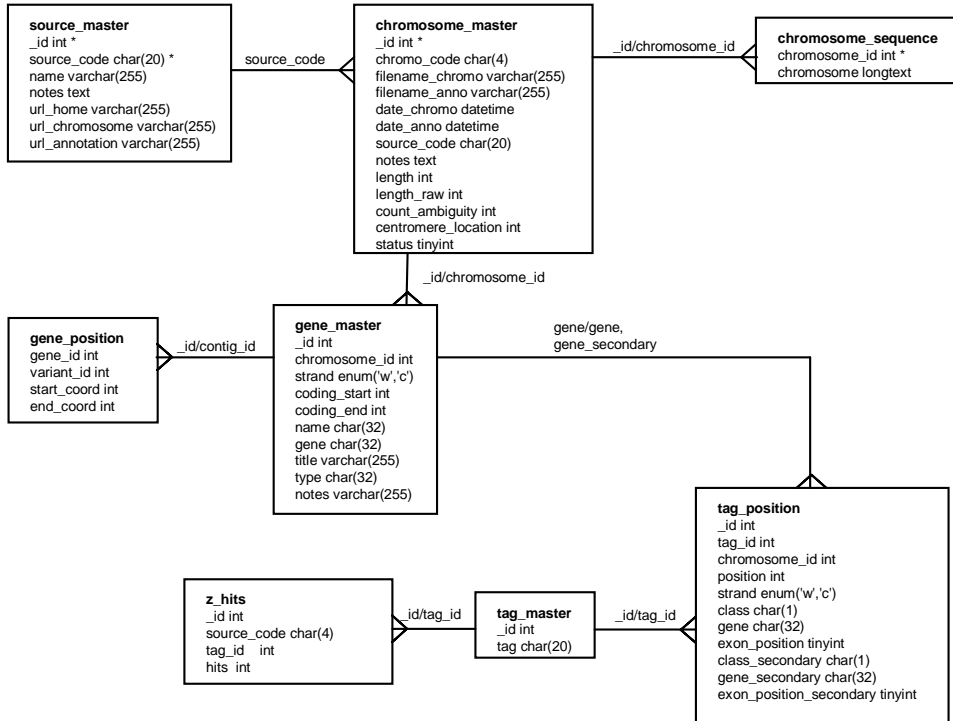


Supplemental Figure 1. Schema for Arabidopsis MPSS database.

The database is designed with two major sets of tables, one that contains the genomic annotation and genomic signature information and a second that contains the MPSS expression data. These genomic and expression data are linked through the “tag_master” table. The tables and fields are shown for each of the two major sets of tables. The lines connecting tables indicate one-to-one (simple lines) or one-to-many (branched lines) relationships.

Genomic data



Expression data

