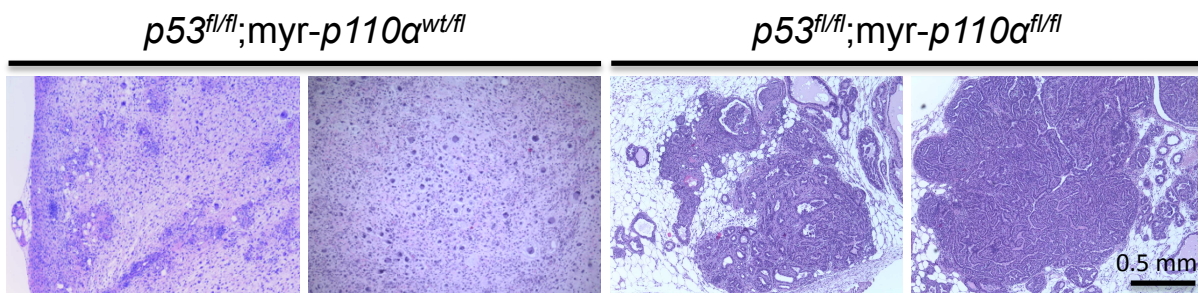


## Supplementary Figure 5

A



**Supplementary Figure 5. Increased gene dosage of *myr-p110 $\alpha$* , when combined with *p53* deletion, modifies tumor subtype to carcinoma.** Hematoxylin and eosin (H&E) staining of mammary tumors from  $p53^{fl/fl}; myr-p110\alpha^{wt/fl}$  and  $p53^{fl/fl}; myr-p110\alpha^{fl/fl}$  females. Pictures of H&E staining were taken with X40 magnification. Scale bar represents 0.5 mm and indicates scale for all images. Pictures are representative.