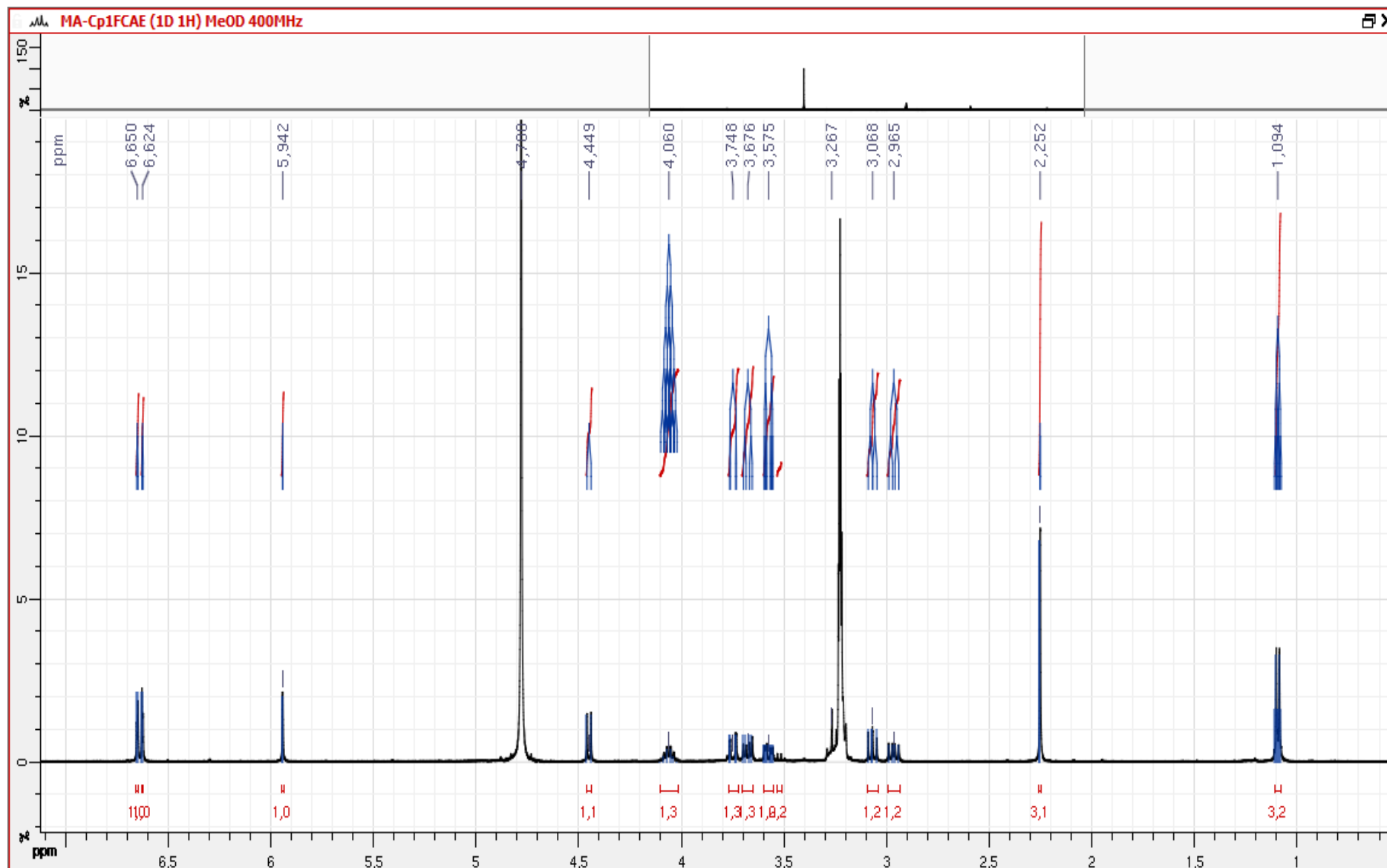
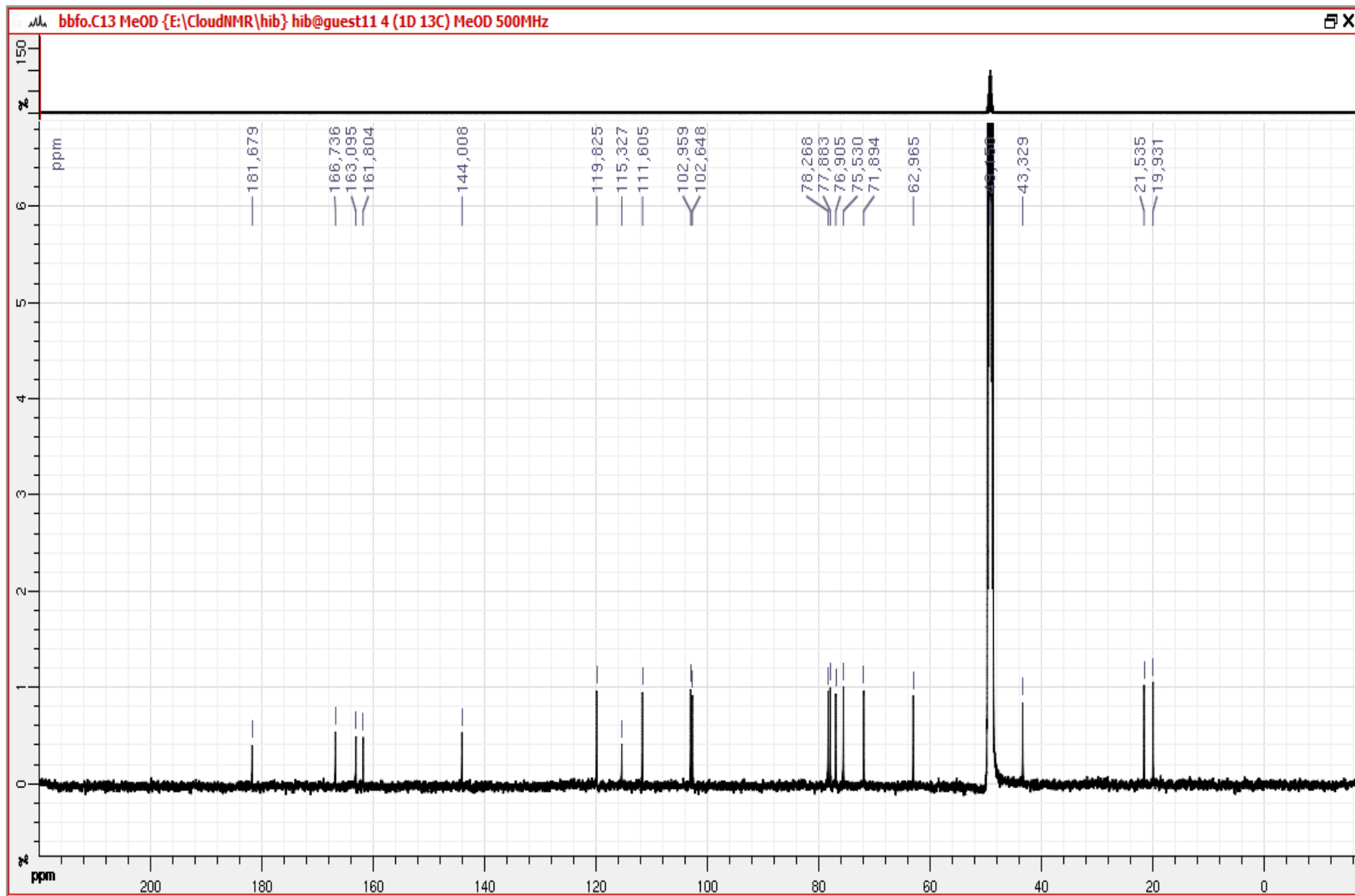


NMR and MS spectrum of the isolated compound (*Acthaside*)

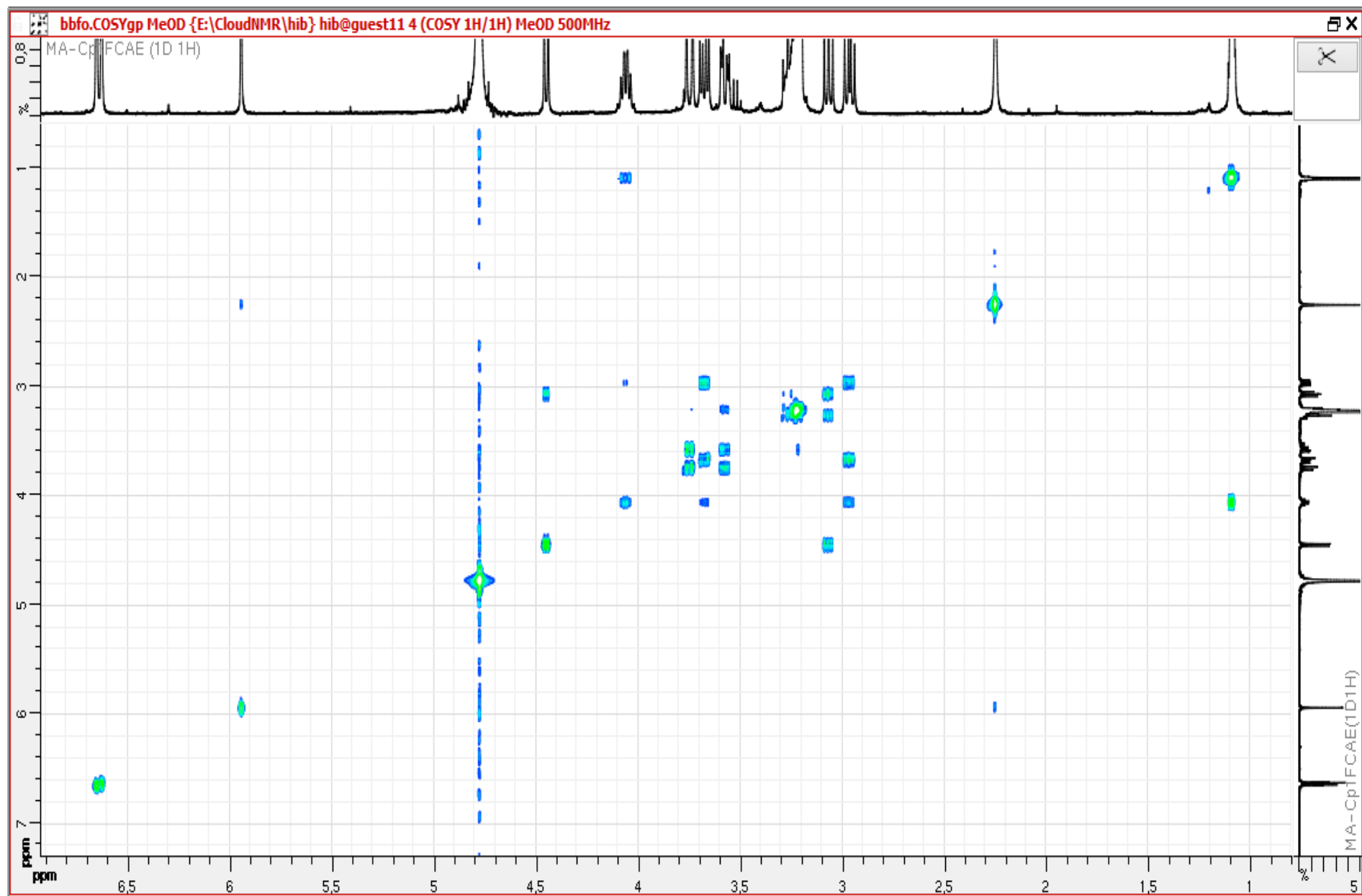
¹H NMR



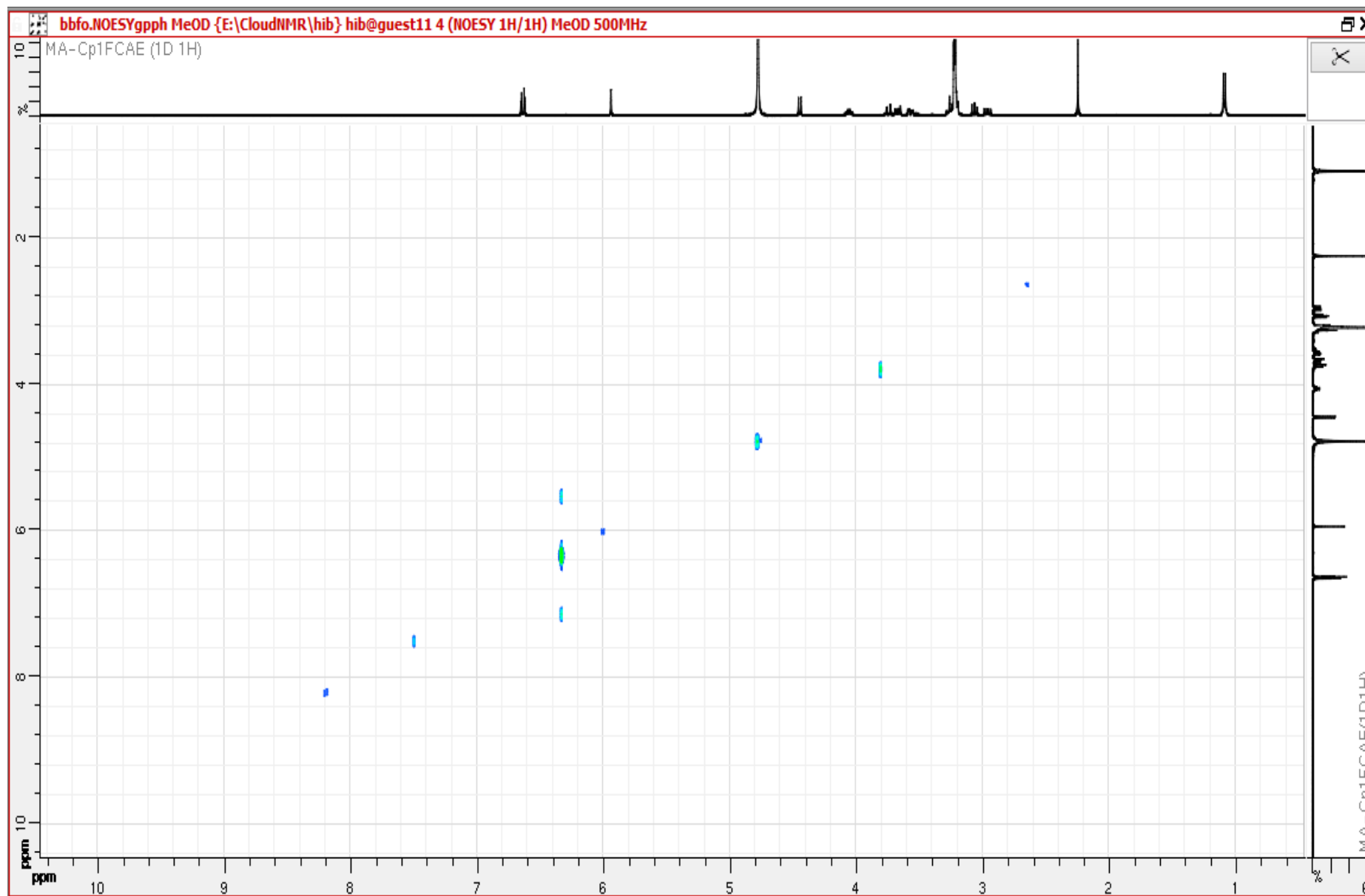
^{13}C NMR



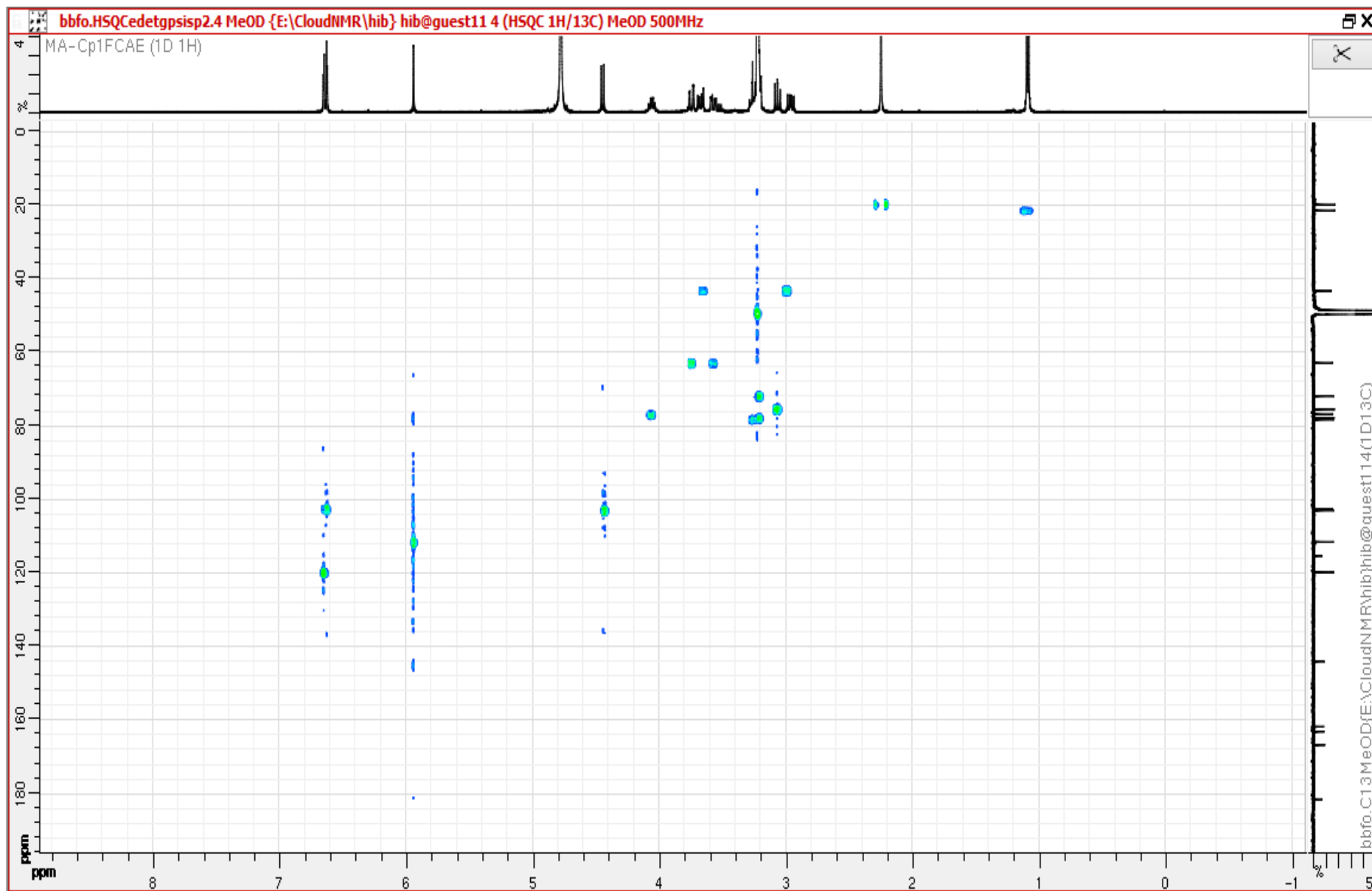
COSY spectral



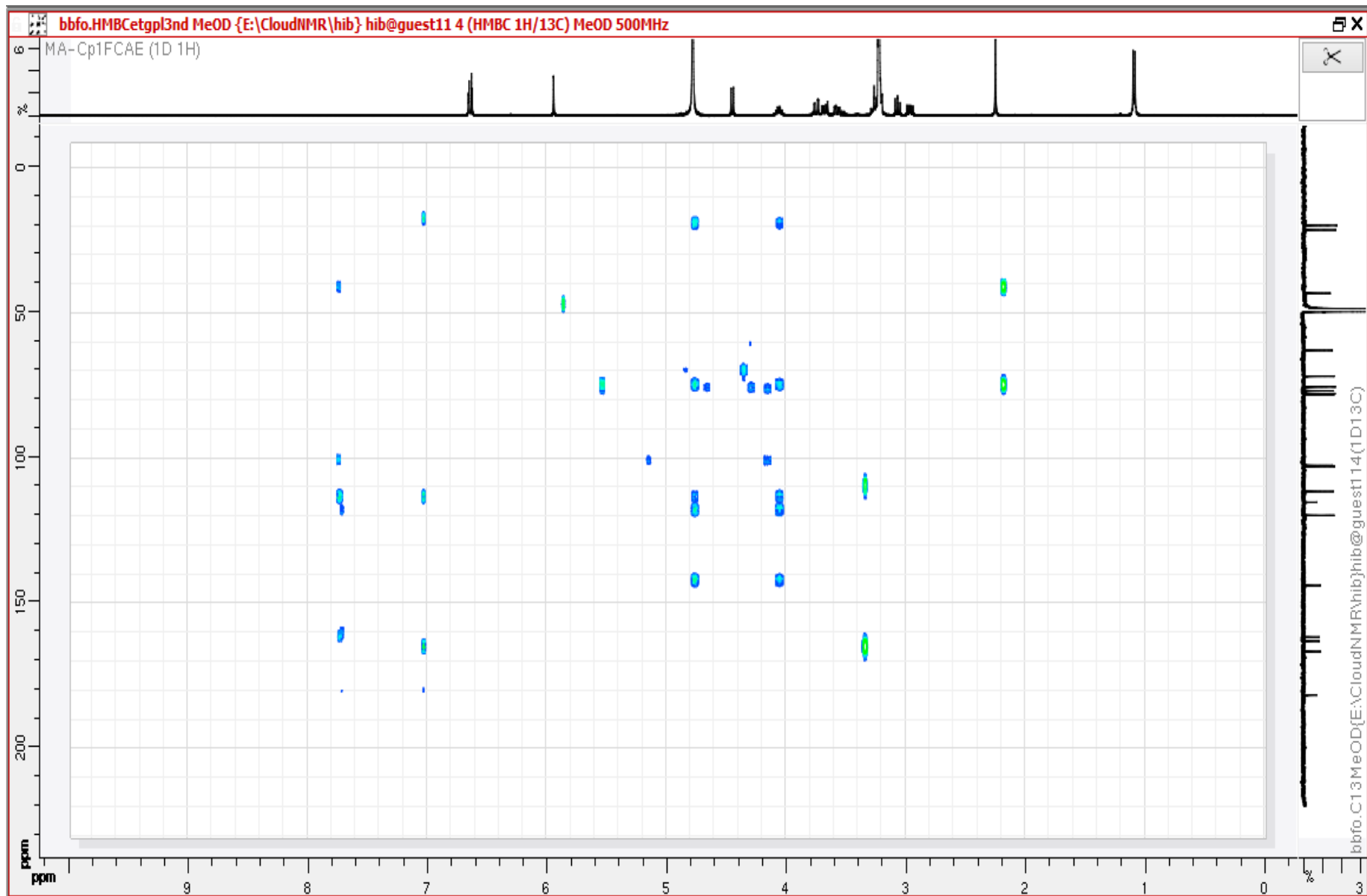
NOESY spectral



HSQC spectral



HMBC spectral



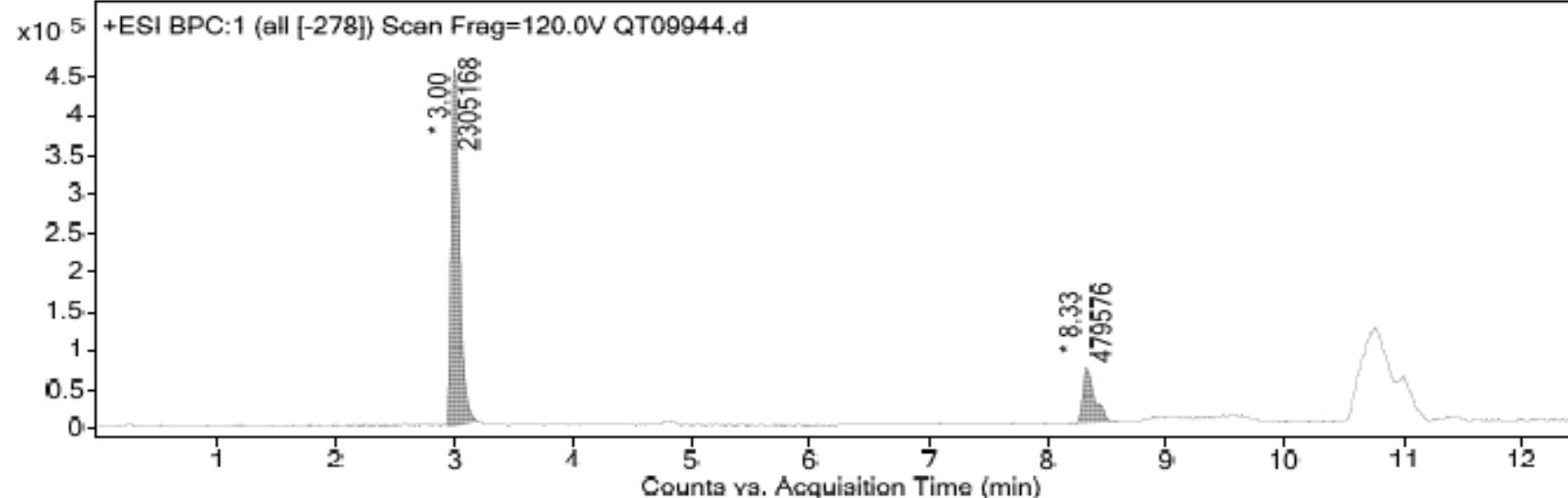
Qualitative Analysis Report

Data Filename	QT09944.d	Sample Name	CP1FcAe
Inj. Vol.	0.1	Position	P1-C3
Instrument Name	SCA Illkirch QToF	User Name	PW
Acq Method	C18-2,1x5x1,8.m	Acquired Time	2/19/2015 12:09:42 PM
IRM Calibration Status	Success	DA Method	C18-2,1x5x1,8.m
Comment			

Sample Group Info.

User Chromatograms

Fragmentor Voltage 120 Collision Energy 0 Ionization Mode ESI



Integration Peak List

Start	RT	End	Height	Area	Area %	AreaSum%
2.94	3	3.2	460053	2305168	100	82.78
8.24	8.33	8.57	70550	479576	20.8	17.22

Qualitative Analysis Report

Spectrum Source

Peak (1) in "+ BPC:1 (all [-278]) Scan"

Fragmentor Voltage

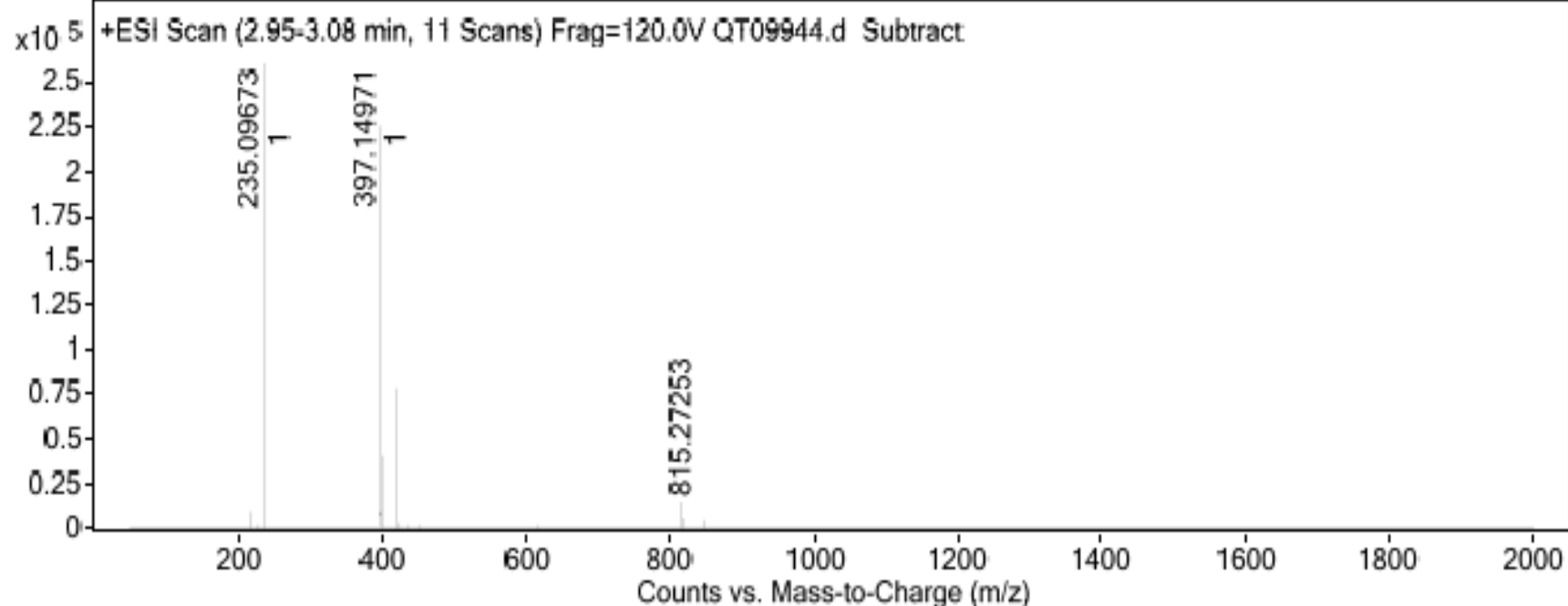
120

Collision Energy

0

Ionization Mode

ESI



Peak List

m/z	z	Abund	Formula	Ion
235.09673	1	265350.1	C13 H15 O4	(M+H)+
236.09981	1	29850.1	C13 H15 O4	(M+H)+
397.14971	1	232350.3	C19 H25 O9	(M+H)+
398.15266	1	39968.4	C19 H25 O9	(M+H)+
419.13118		78852.9		
815.27253		13898.5		

Qualitative Analysis Report

Spectrum Source

Peak (1) In "DAD1 - EWC:5lg=210,8 Ref=520,8

Sub"

