

Figure 1: The effect of the six transformation functions, t_0 - t_5 , on a spectrum from the Fiedler dataset.

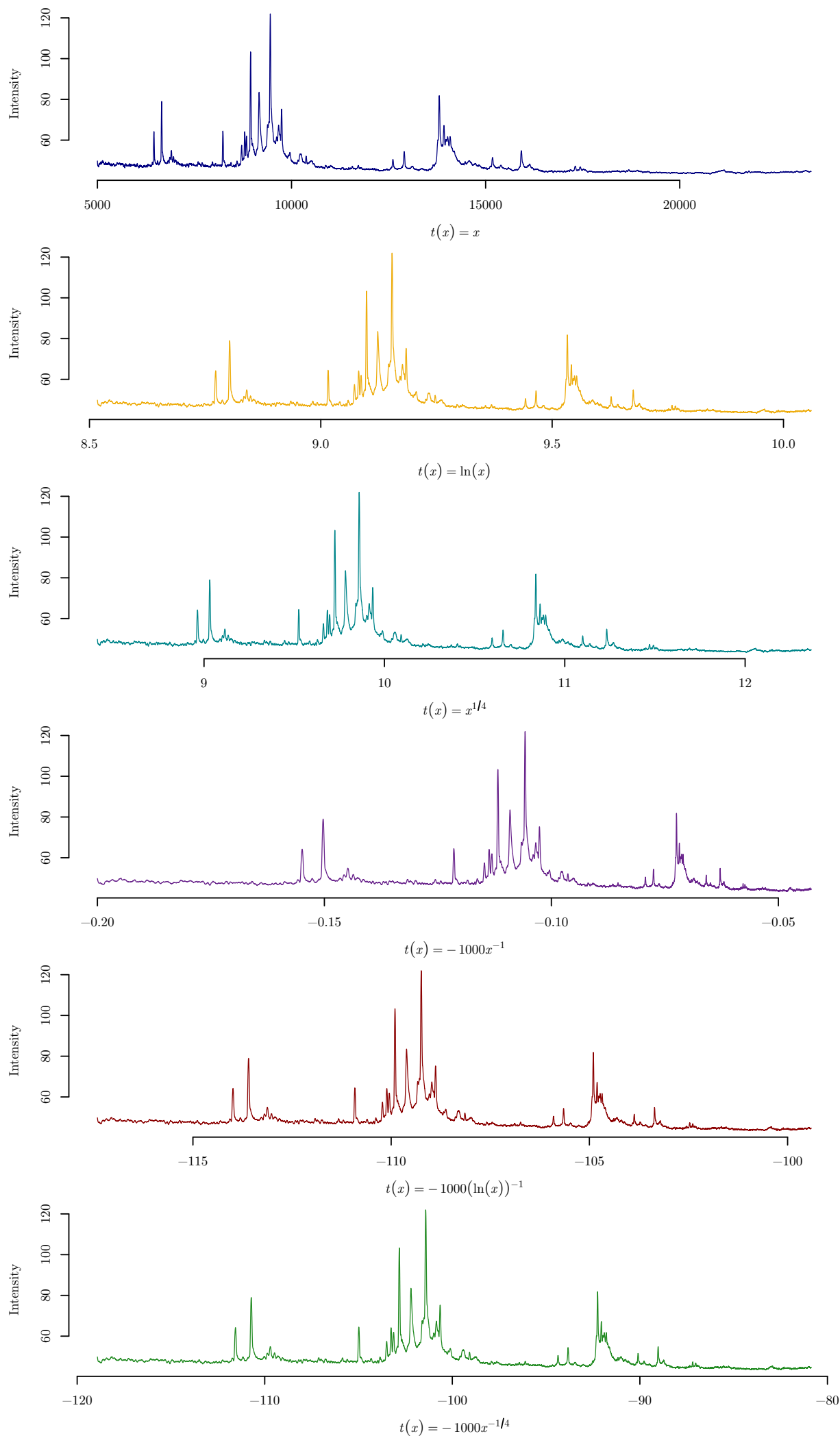


Figure 2: The effect of the six transformation functions, t_0 - t_5 , on a spectrum from the Yildiz dataset.

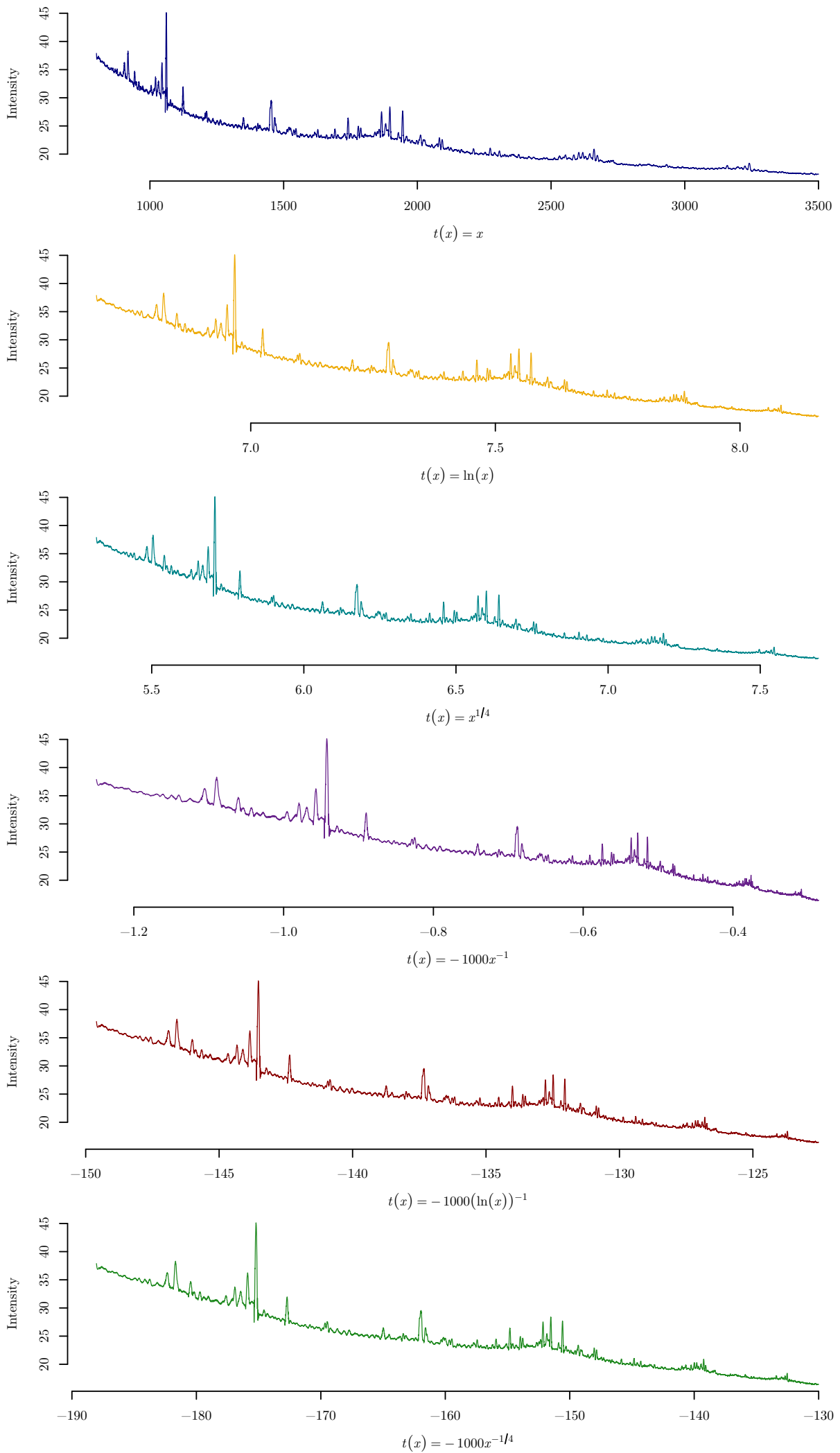


Figure 3: The effect of the six transformation functions, t_0 - t_5 , on a spectrum from the Wu dataset.

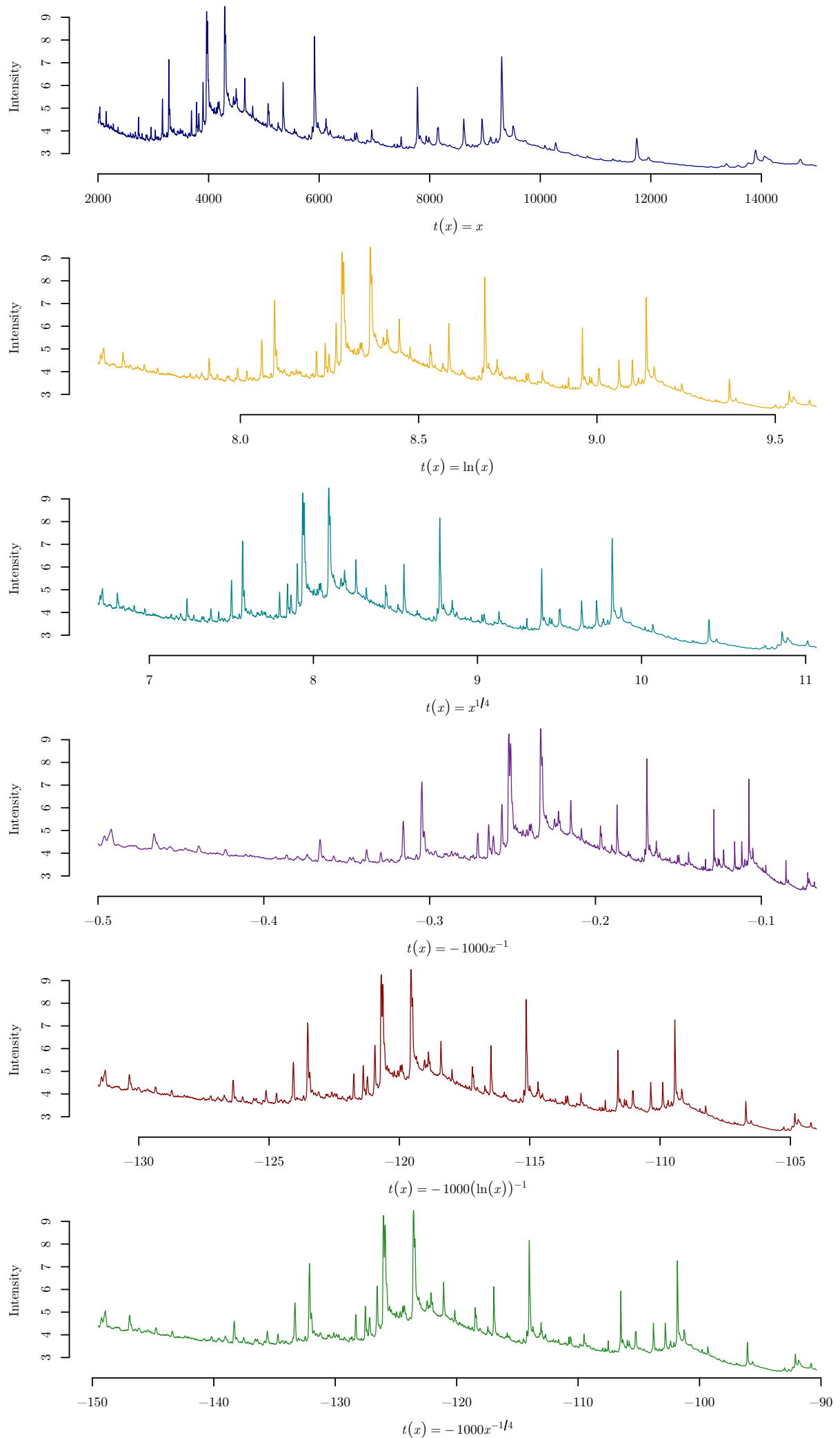


Figure 4: The effect of the six transformation functions, t_0 - t_5 , on a spectrum from the Adam dataset.

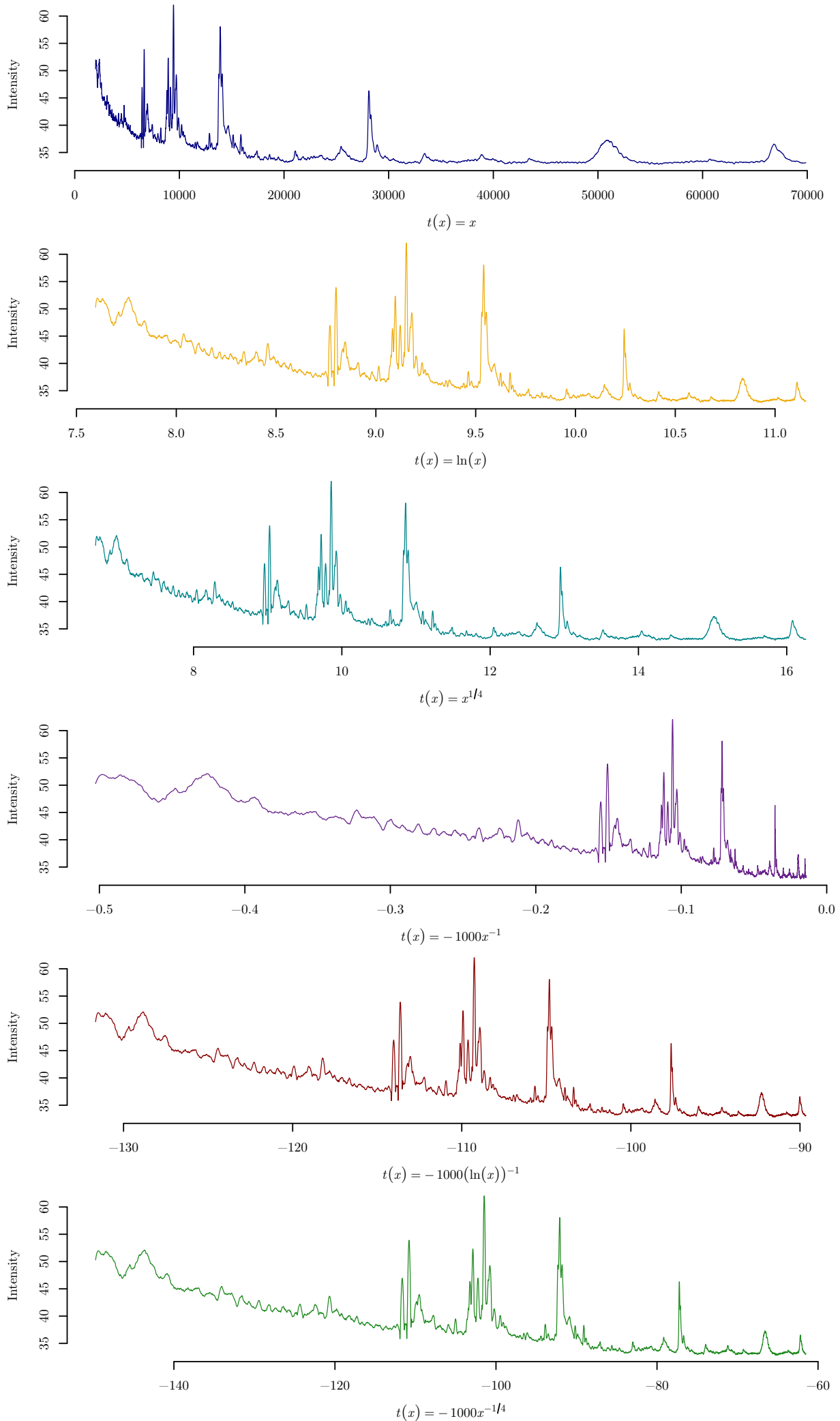


Figure 5: The effect of the six transformation functions, t_0 - t_5 , on a spectrum from the Taguchi dataset.

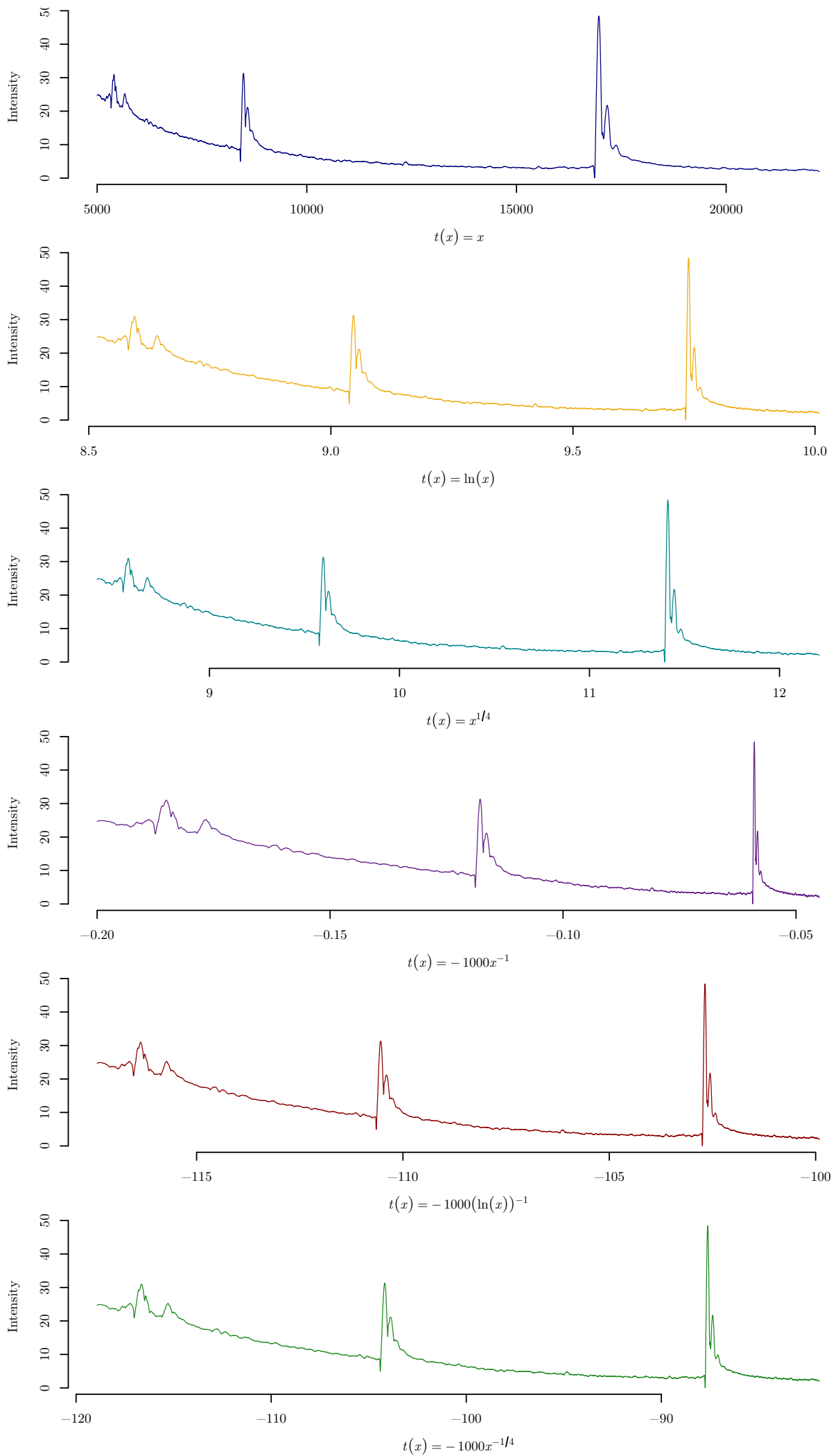


Figure 6: The effect of the six transformation functions, t_0 - t_5 , on a spectrum from the Mantini dataset.