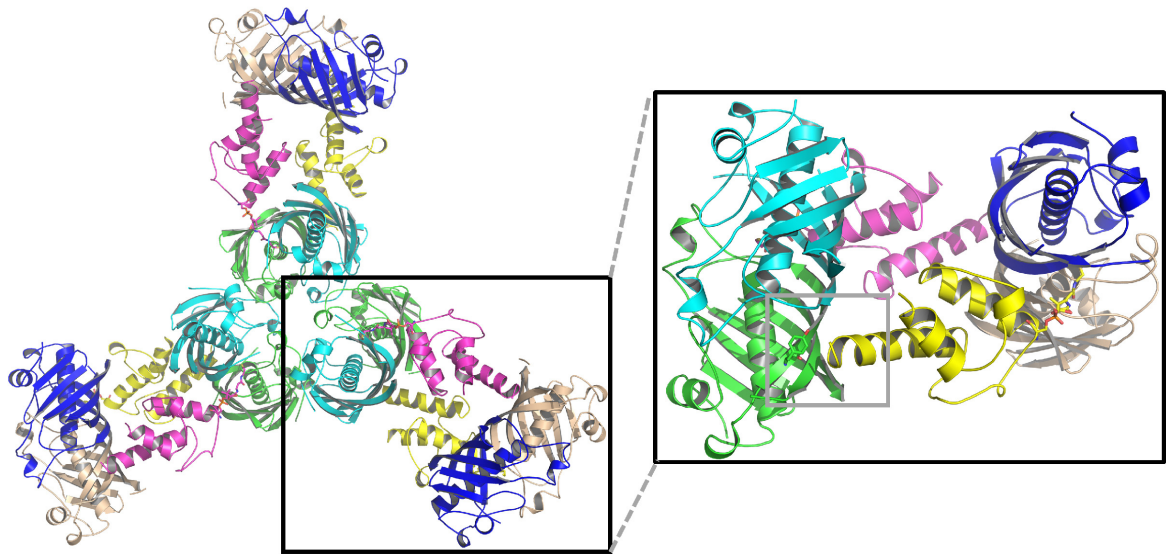
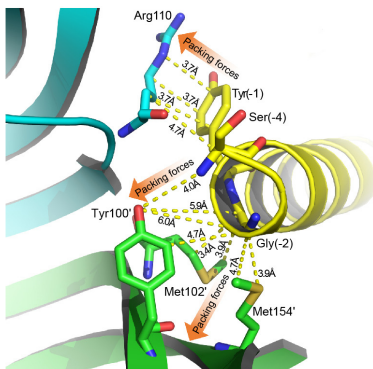


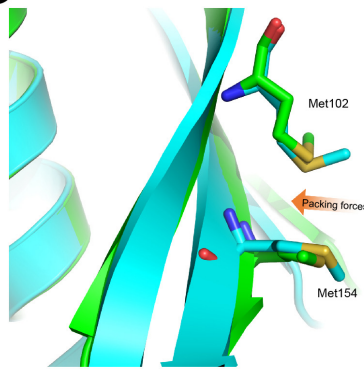
A



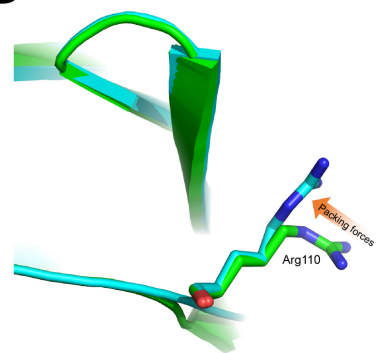
B



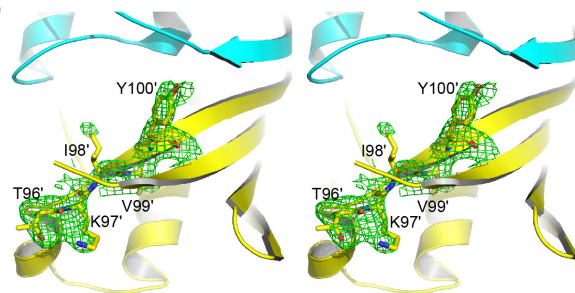
C



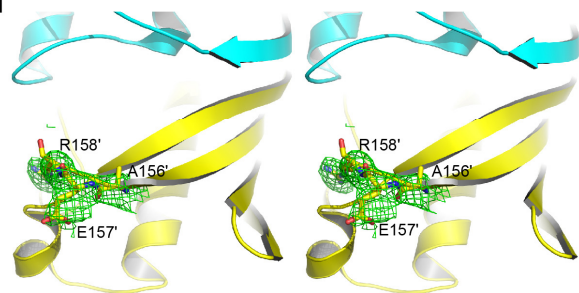
D



E



F



Supplementary information, Figure S9 The crystallographic packing of FabZ with N-terminus of holo-ACP from neighbor FabZ-ACP complex. **(A)** The interactions involved in the packing. FabZ hexamer (dimer A/B) and holo-ACP within the complex are colored in green, cyan, and magenta, respectively. FabZ dimer (A/B) and holo-ACP from neighbor FabZ hexamer-ACP

complex are colored in wheat, blue and yellow, respectively. The residues involved in the packing interactions are shown as sticks and labeled. Y-1, G-2 and S-4 refer to the extra residues added to the N-terminus of holo-ACP from pET32a expression vector after enterokinase protease cleavage. **(B)** The Stereo view of fofc omit electron density of FabZ residue 96'-100' in monomer A at 2.0 σ . **(C)** The Stereo view of fofc omit electron density of FabZ residue 156'-158' in monomer A at 2.0 σ . Due to the flexibility of residues 96'-97' (long fatty acid chain exit II, disordered in any other published FabZ structures) and 156'-158' (C-terminus, moving region within the beta-sheet layer), the density maps are only acceptable.