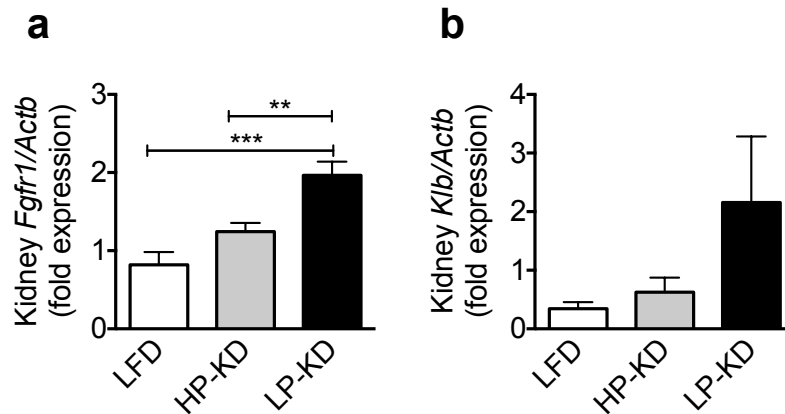


SUPPLEMENTAL FIGURE 3:



Renal expression of the *Fgf21* receptor complex *Fgfr1* and *Klb* following 8 weeks of KD feeding.

Eight weeks of feeding with LP-KD diet resulted in a significant up-regulation of (a) fibroblast growth factor receptor 1 (*Fgfr1*) and in a trend towards an increased β -klotho (*Klb*) expression in the isolated kidney cortex (b). All data are shown as means \pm SEM, N = 7 - 14 random samples per group. Statistical significance was analyzed by One Way ANOVA followed by Tukey's post hoc tests. P < 0.01 (**), P < 0.001 (***). Analyses were performed by using GraphPad Prism 6.0 (GraphPad, Inc, La Jolla, CA).