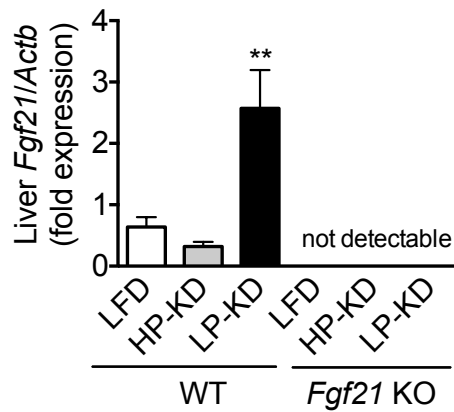


#### SUPPLEMENTAL FIGURE 4:



#### Hepatic FGF21 expression in FGF21 wild type and ko mice.

Two weeks of feeding with LP-KD diet increased hepatic *Fgf21* expression in WT mice. *Fgf21* expression was not detectable in *Fgf21* KO mice. All data are shown as means  $\pm$  SEM, N=8 (LFD), N=8 (HP-KD) N= 8 (LP-KD). Statistical significance was analyzed by One Way ANOVA followed by Tukey's post hoc tests.  $P < 0.001$  (\*\*\*). Analyses were performed by using GraphPad Prism 6.0 (GraphPad, Inc, La Jolla, CA).