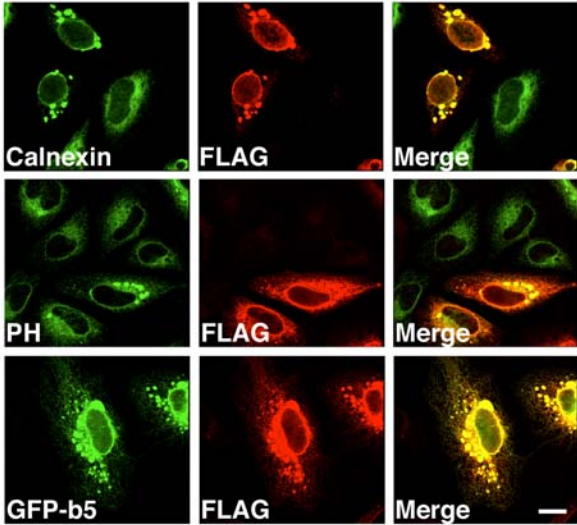
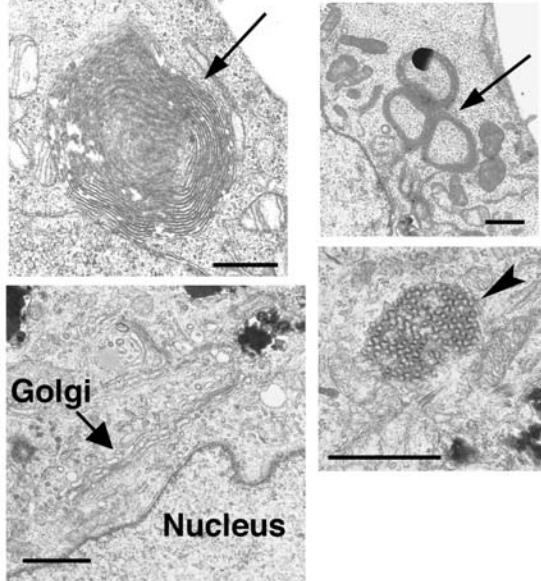


**Figure S2**

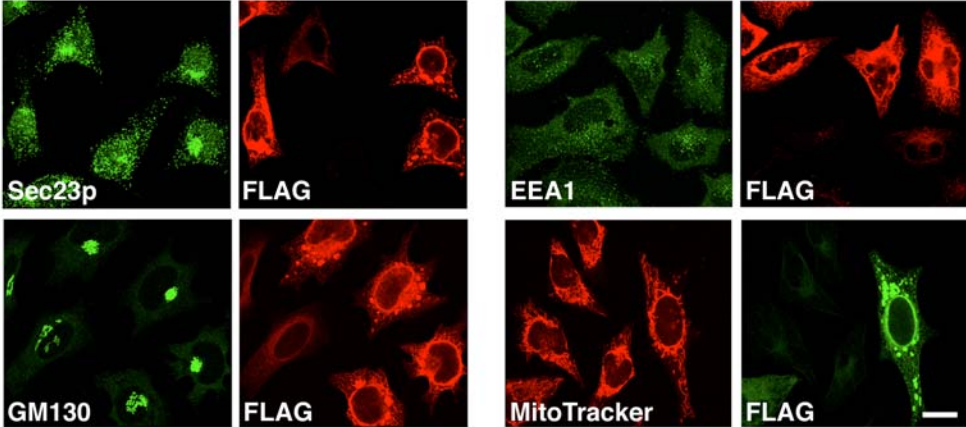
**A**



**B**



**C**



**Supplementary Figure 2** Overexpression of BNIP1 causes ER aggregation. **(A and C)** HeLa cells or those stably expressing GFP-b<sub>5</sub> were transfected with 1 µg of pFLAG-BNIP1. At 24 h after transfection, the cells were processed for morphological analysis. Double staining for organelle markers and FLAG tag. PH implies prolyl 4-hydroxylase. Bar, 20 µm. **(B)** Electron micrographs of BNIP1-overexpressing cells. Whorl-shaped and crystalloid ER structures are marked by arrows and an arrowhead, respectively. Bar, 1 µm.