

## Supplementary Materials for **Monkey vocal tracts are speech-ready**

W. Tecumseh Fitch, Bart de Boer, Neil Mathur, Asif A. Ghazanfar

Published 9 December 2016, *Sci. Adv.* **2**, e1600723 (2016)

DOI: 10.1126/sciadv.1600723

### **The PDF file includes:**

- Legends for audio files S1 and S2
- fig. S1. Monkey MRIs used to estimate the conversion factor from linear midsagittal diameter measurements to two-dimensional areas.
- fig. S2. Comparison of human female vowels in Dutch, which has vowels not present in English (red dashed line), with the macaque vocal tract model (gray dotted line).

### **Other Supplementary Material for this manuscript includes the following:**

(available at [advances.sciencemag.org/cgi/content/full/2/12/e1600723/DC1](http://advances.sciencemag.org/cgi/content/full/2/12/e1600723/DC1))

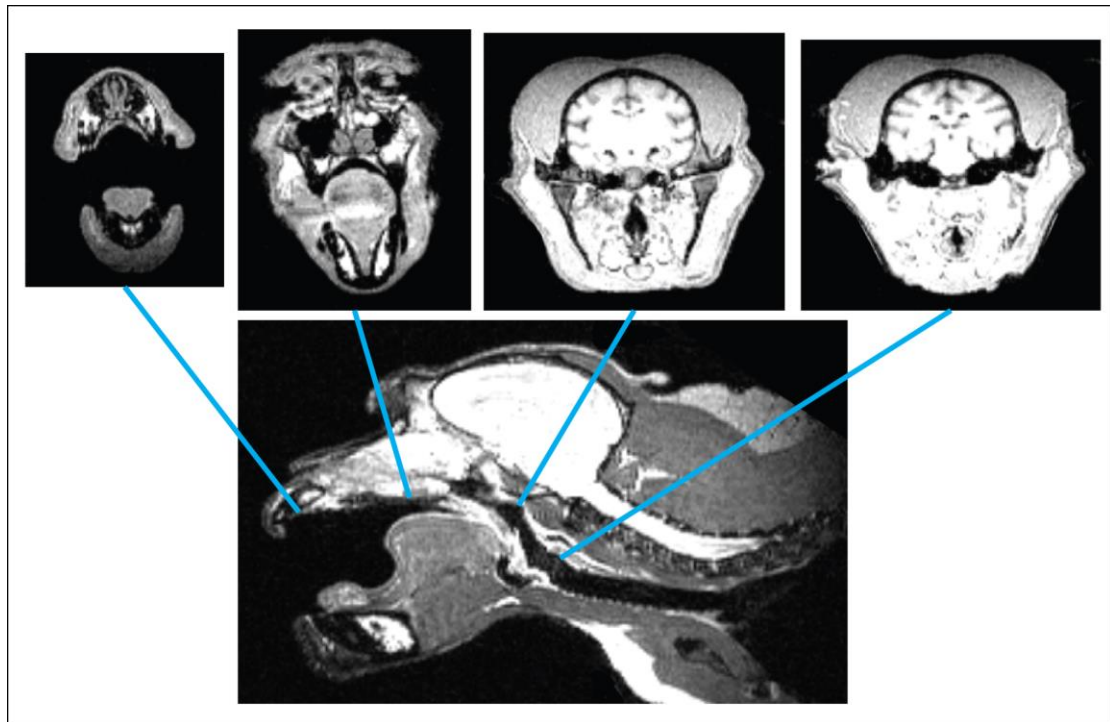
- audio file S1 (.wav format). Audio file of an adult human female saying “Will you marry me?,” resynthesized with a noisy source.
- audio file S2 (.wav format). Audio file of our macaque vocal model uttering the same phrase “Will you marry me?,” synthesized with the same noisy source.

**Supplementary Sound examples** (WAV files): These files are represented as spectrograms in Figure 4 in the main text.

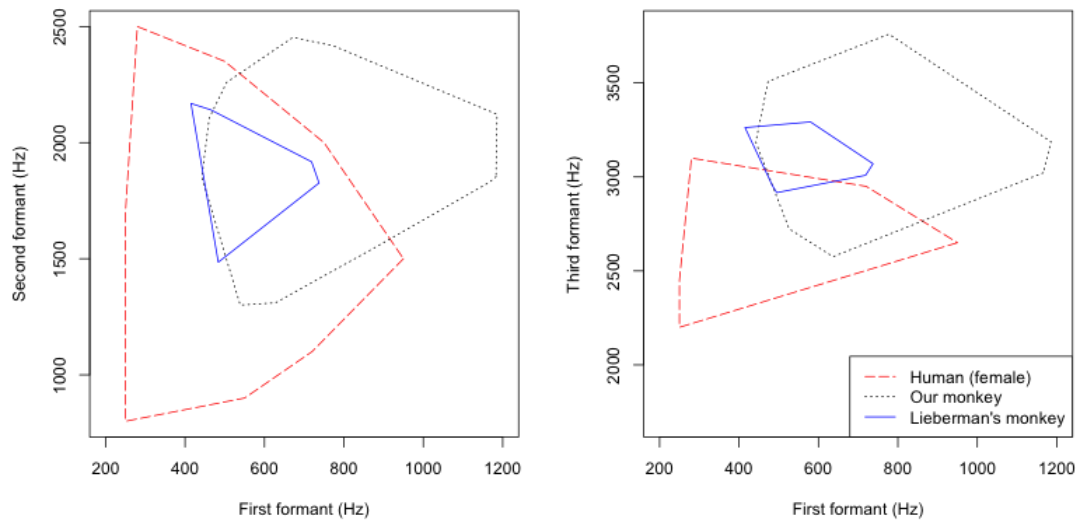
audio file S1. Audio file of an adult human female saying “Will you marry me”, resynthesized with a noisy source.

audio file S2. Audio file of our macaque vocal model uttering the same phrase “Will you marry me” synthesized with the same noisy source.

**Supplementary Figures:**



**fig. S1. Monkey MRIs used to estimate the conversion factor from linear midsagittal diameter measurements to two-dimensional areas.** Bottom pane is a midsagittal MRI image; upper panes are the cross-sectional MRI images from which areas were derived, and blue connecting lines indicate the location along the vocal tract from which each of these upper panes was taken.



**fig. S2. Comparison of human female vowels in Dutch, which has vowels not present in English (red dashed line), with the macaque vocal tract model (gray dotted line). The values from Lieberman *et al.* 1969 (6) are provided (blue solid line) for comparison.**