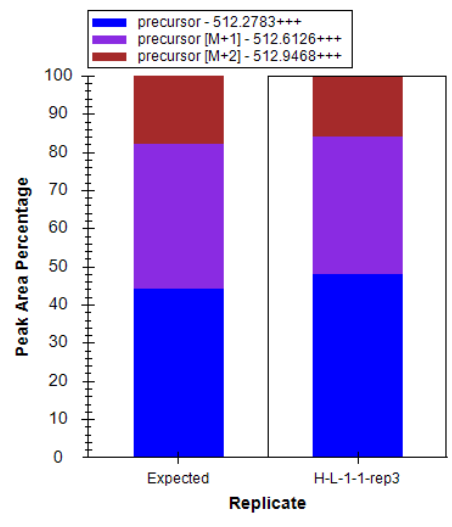
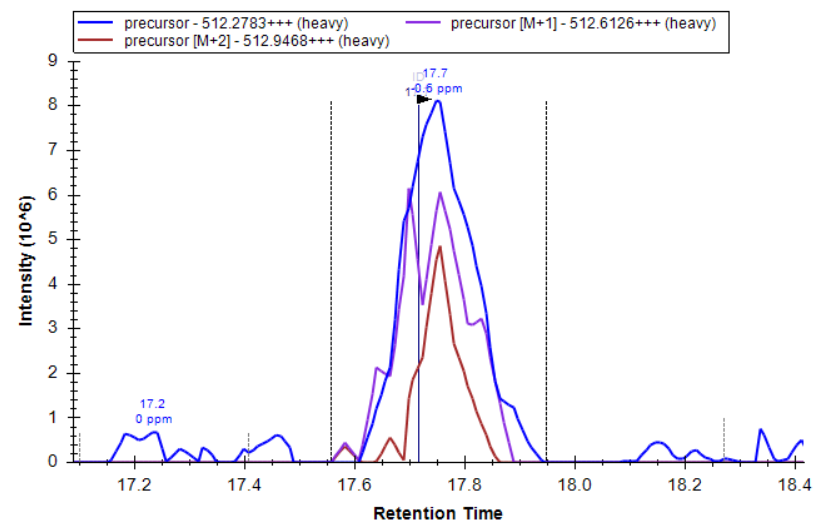
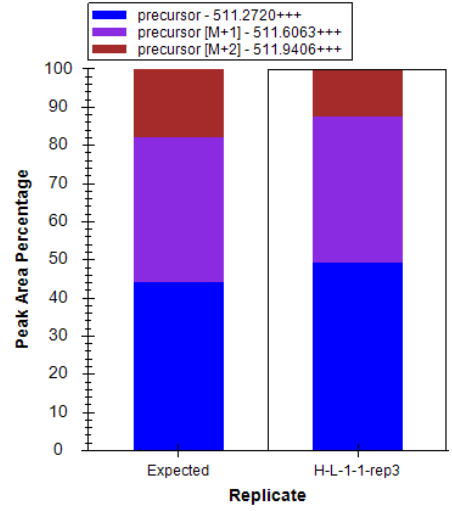
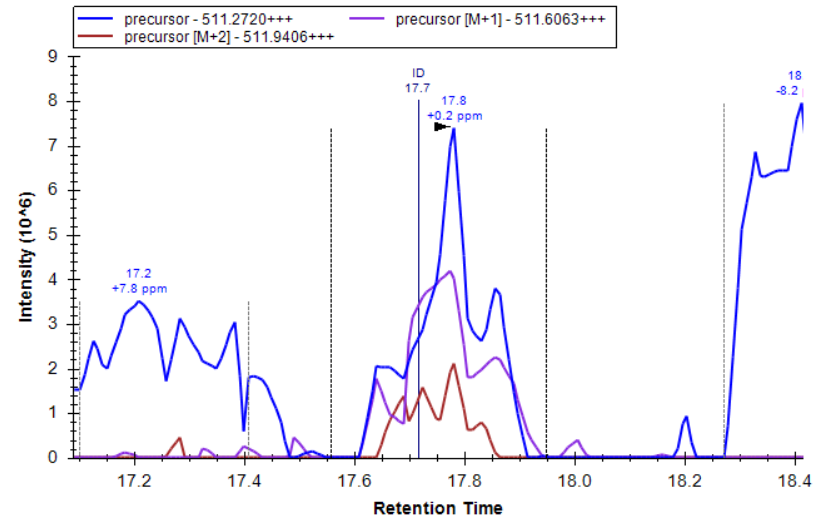


Mitochondrial Fraction

MS1 Chromatograms and
MS2 Fragmentation Patterns

Rpl42ab

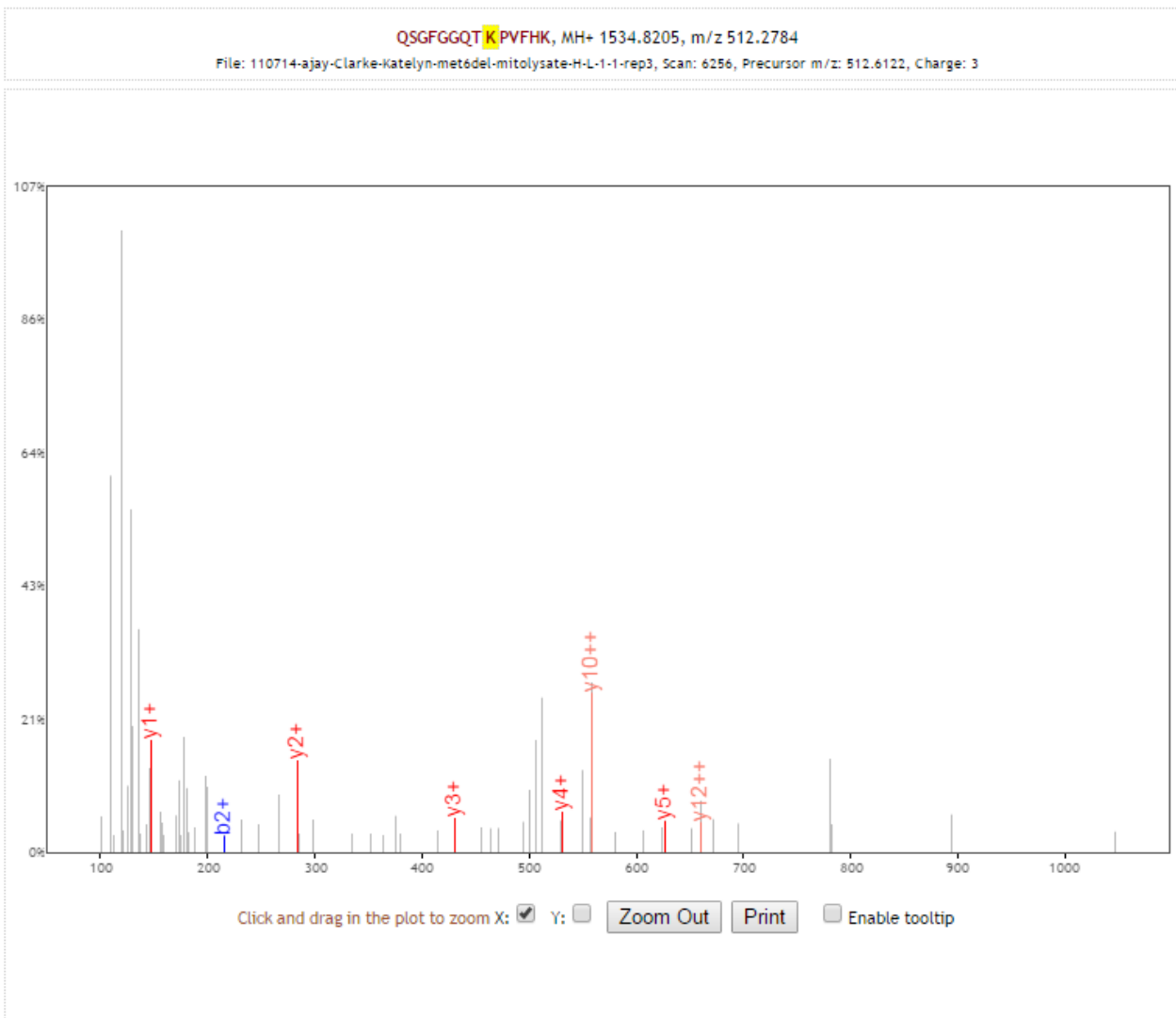
K.QSGFGGQTmono**K**PVFHK.K [46, 59]



Replicate 3

Rpl42ab

K.QSGFGGQTmono**K**PVFHK.K [46, 59]



b+	b2+	#	Seq #	y+	y2+
129.0659	65.0366	1	Q	14	
216.0979	108.5526	2	S	13	703.8846
273.1193	137.0633	3	G	12	660.3686
420.1878	210.5975	4	F	11	631.8579
477.2092	239.1082	5	G	10	558.3237
534.2307	267.6190	6	G	9	529.8129
662.2893	331.6483	7	Q	8	501.3022
763.3369	382.1721	8	T	7	437.2729
908.4665	454.7369	9	K	6	386.7491
1005.5193	503.2633	10	P	5	627.3613
1104.5877	552.7975	11	V	4	530.3085
1251.6561	626.3317	12	F	3	431.2401
1388.7150	694.8611	13	H	2	284.1717
		14	K	1	147.1128

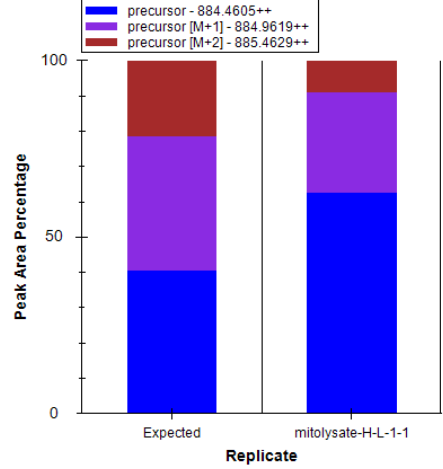
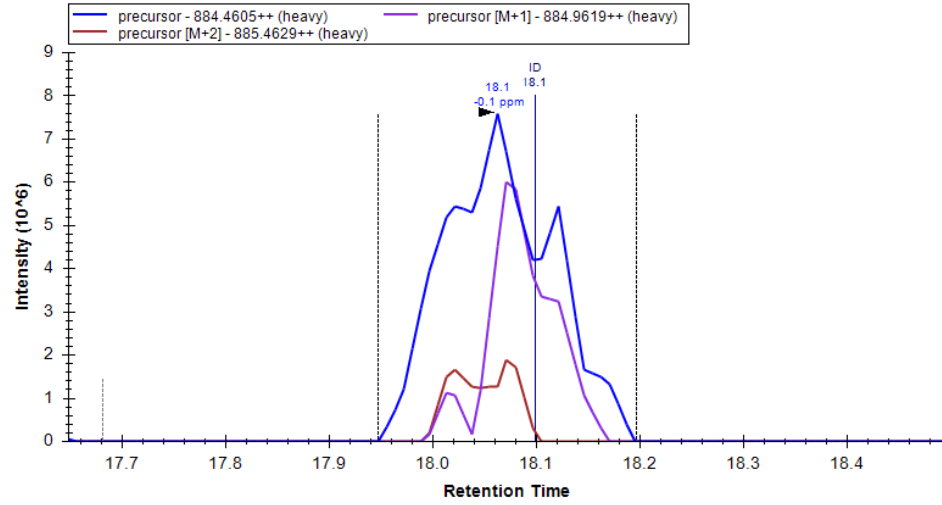
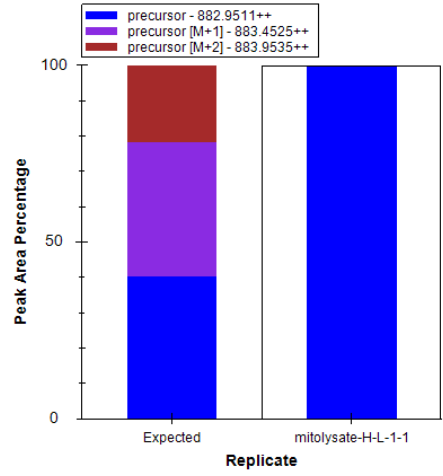
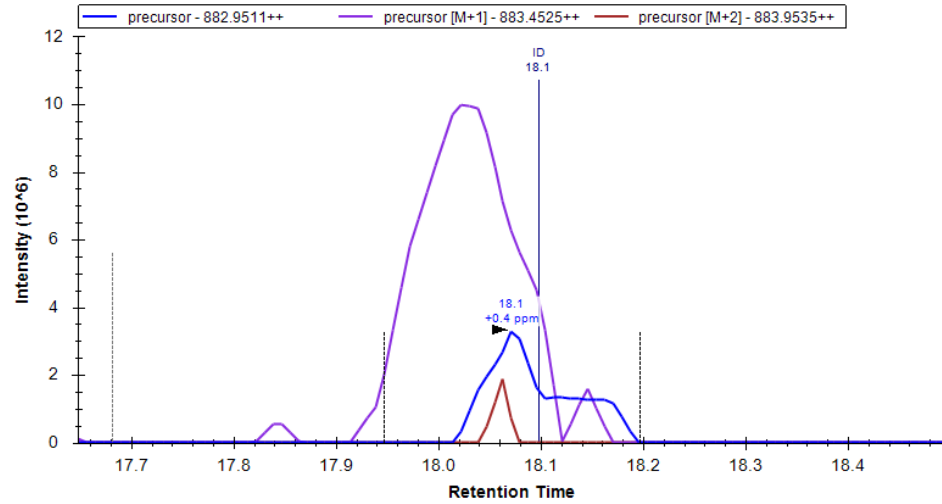
[Click] to move table

Static Modifications:
 C: 57.02146
 M: 3.0189

Variable Modifications:
 K: 17.0346

eEF1A

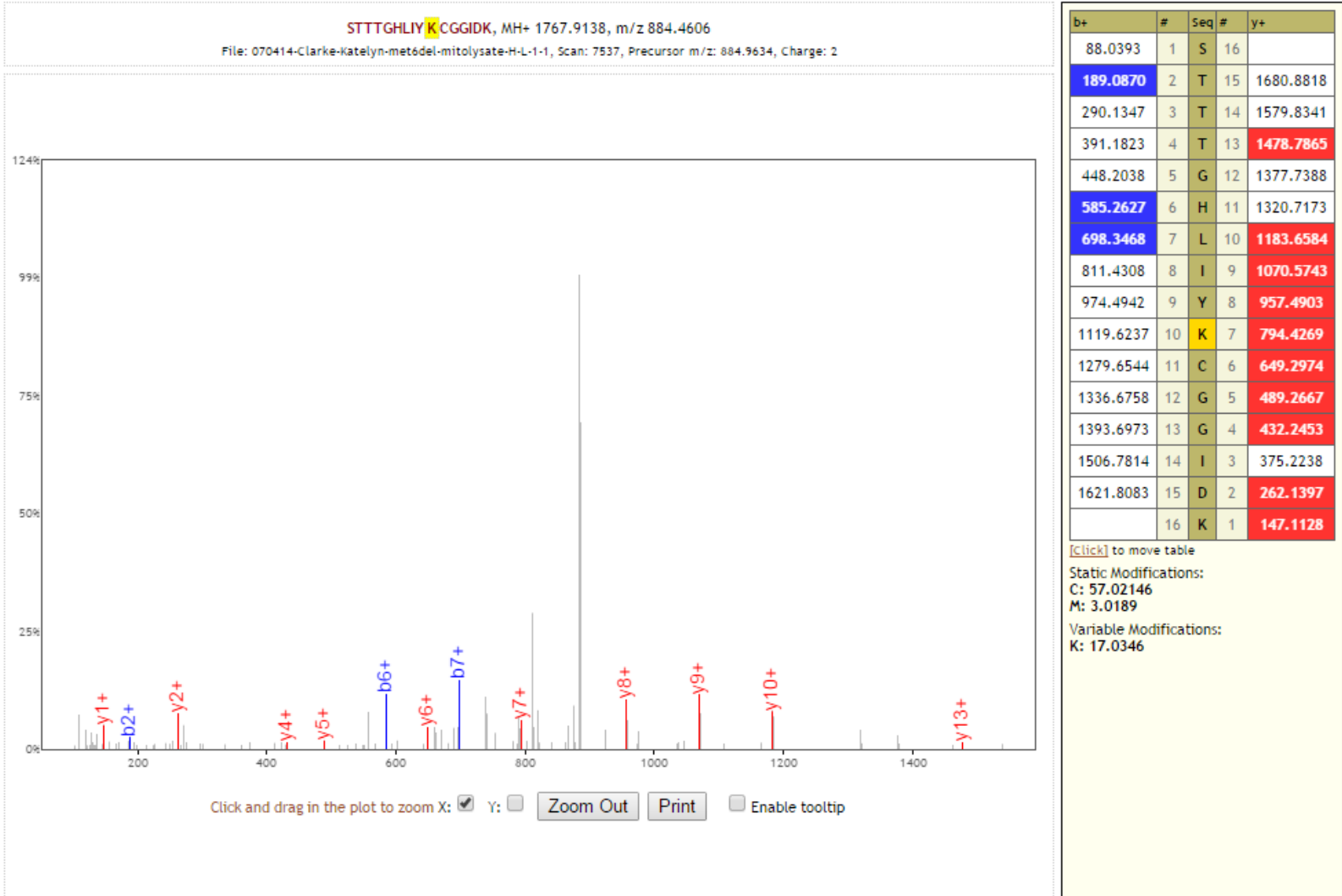
K.STTTGHLIYmono**K**CGGIDK.R [20, 35] (missed 1)



Replicate 1

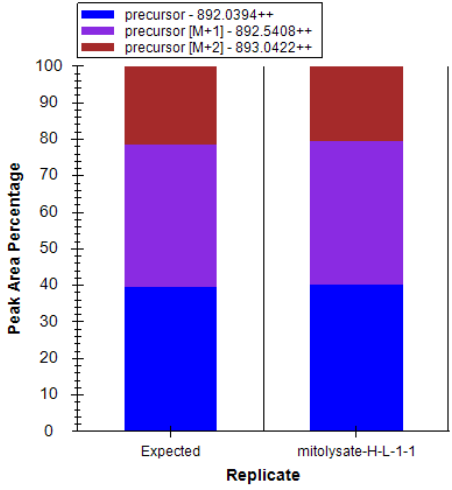
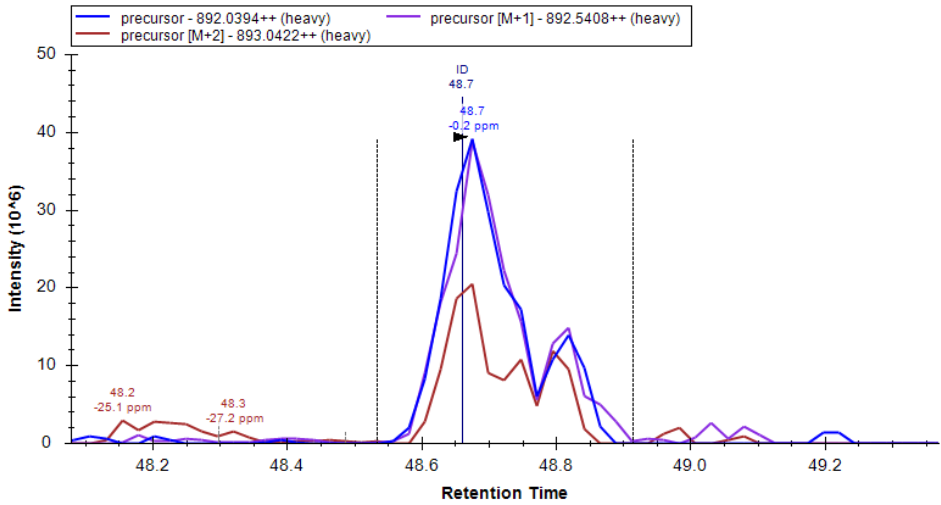
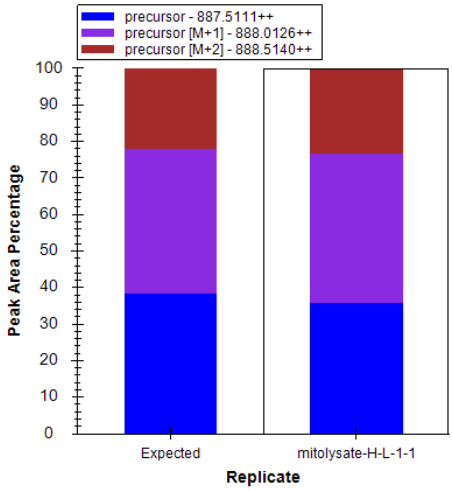
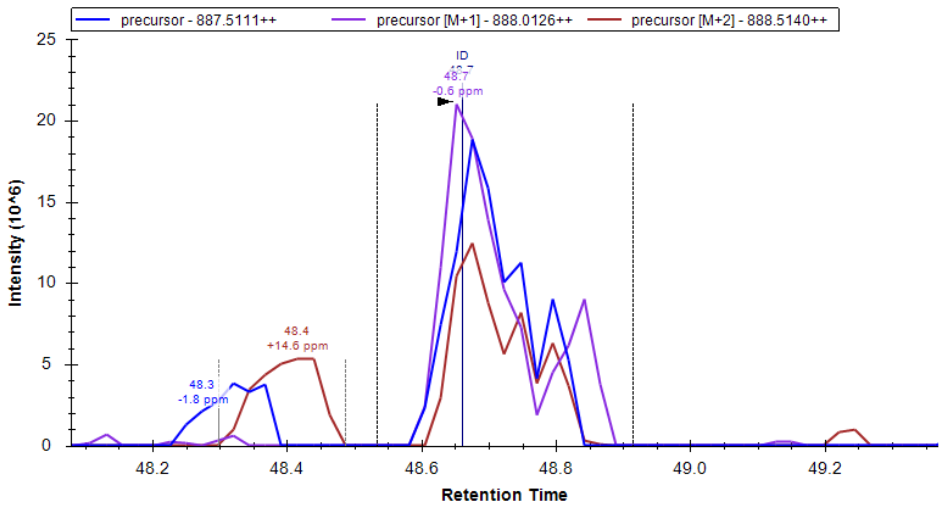
eEF1A

K.STTTGHLIYmono**K**CGGIDK.R [20, 35] (missed 1)



eEF1A

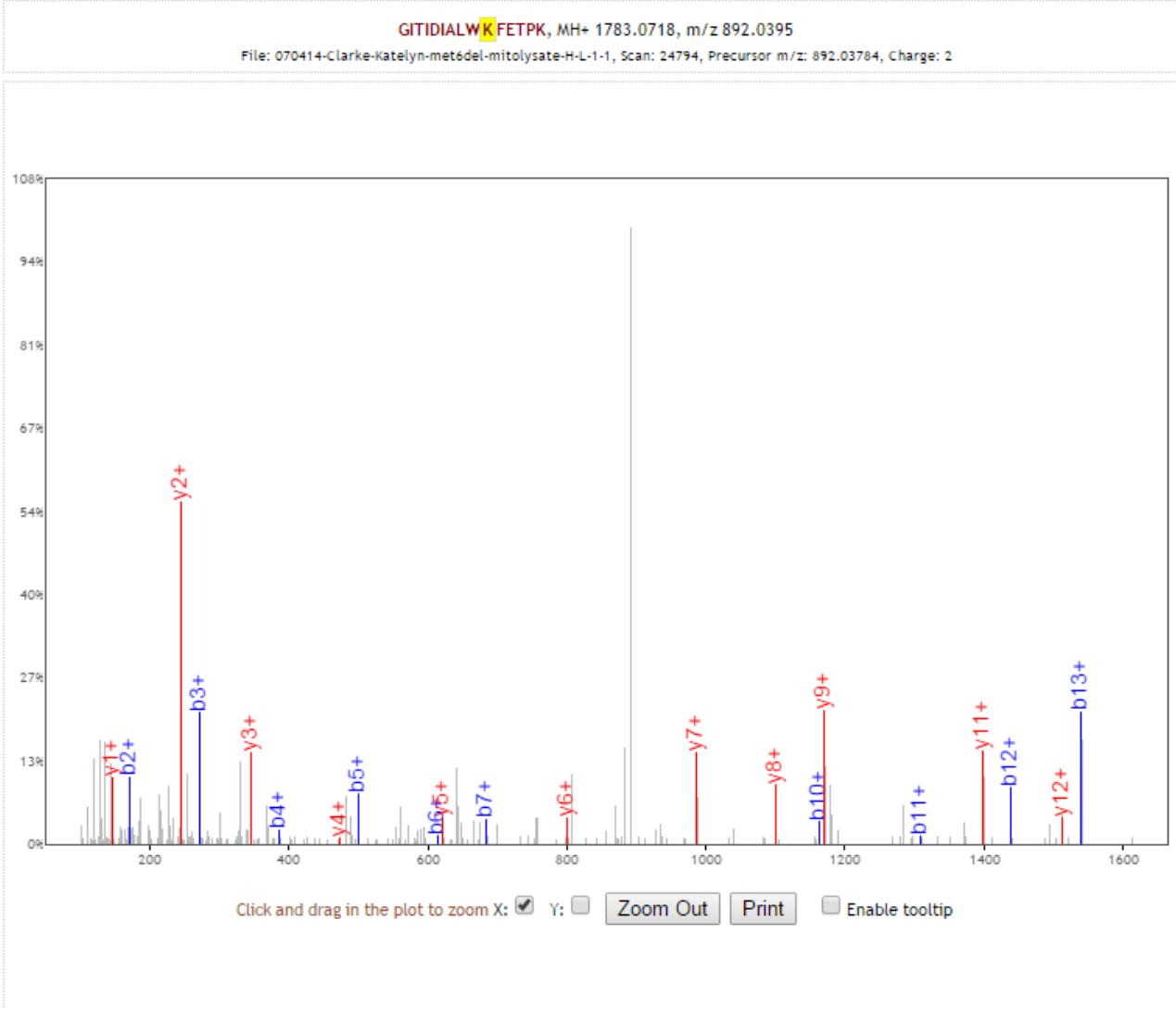
R.GITIDIALWtriKFETPK.Y [69, 83] (missed 1)



Replicate 1

eEF1A

R.GITIDIALWtri**K**FETPK.Y [69, 83] (missed 1)



b+	#	Seq	#	y+
58.0287	1	G	15	
171.1128	2	I	14	1726.0503
272.1605	3	T	13	1612.9663
385.2445	4	I	12	1511.9186
500.2715	5	D	11	1398.8345
613.3556	6	I	10	1283.8076
684.3927	7	A	9	1170.7235
797.4767	8	L	8	1099.6864
983.5560	9	W	7	986.6023
1162.7548	10	K	6	800.5230
1309.8232	11	F	5	621.3243
1438.8658	12	E	4	474.2558
1539.9135	13	T	3	345.2132
1636.9663	14	P	2	244.1656
	15	K	1	147.1128

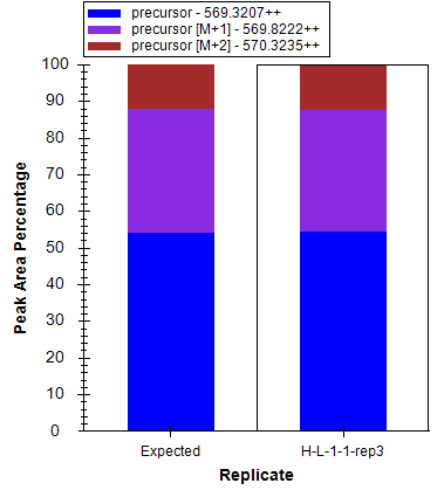
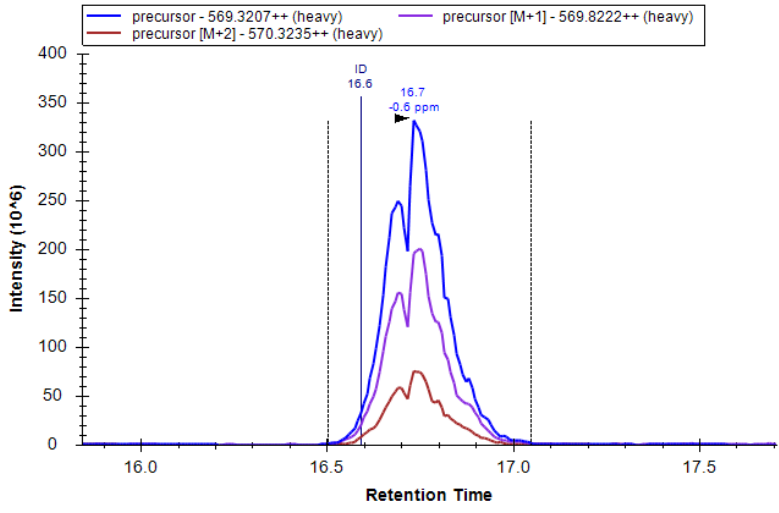
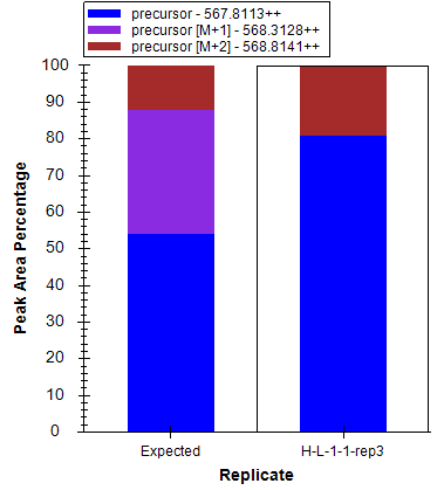
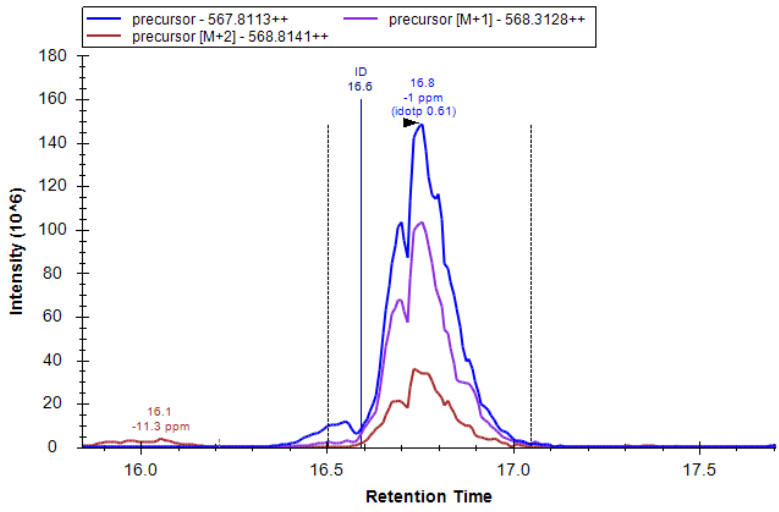
[\[Click\]](#) to move table

Static Modifications:
 C: 57.02146
 M: 3.0189

Variable Modifications:
 K: 51.1038

eEF1A

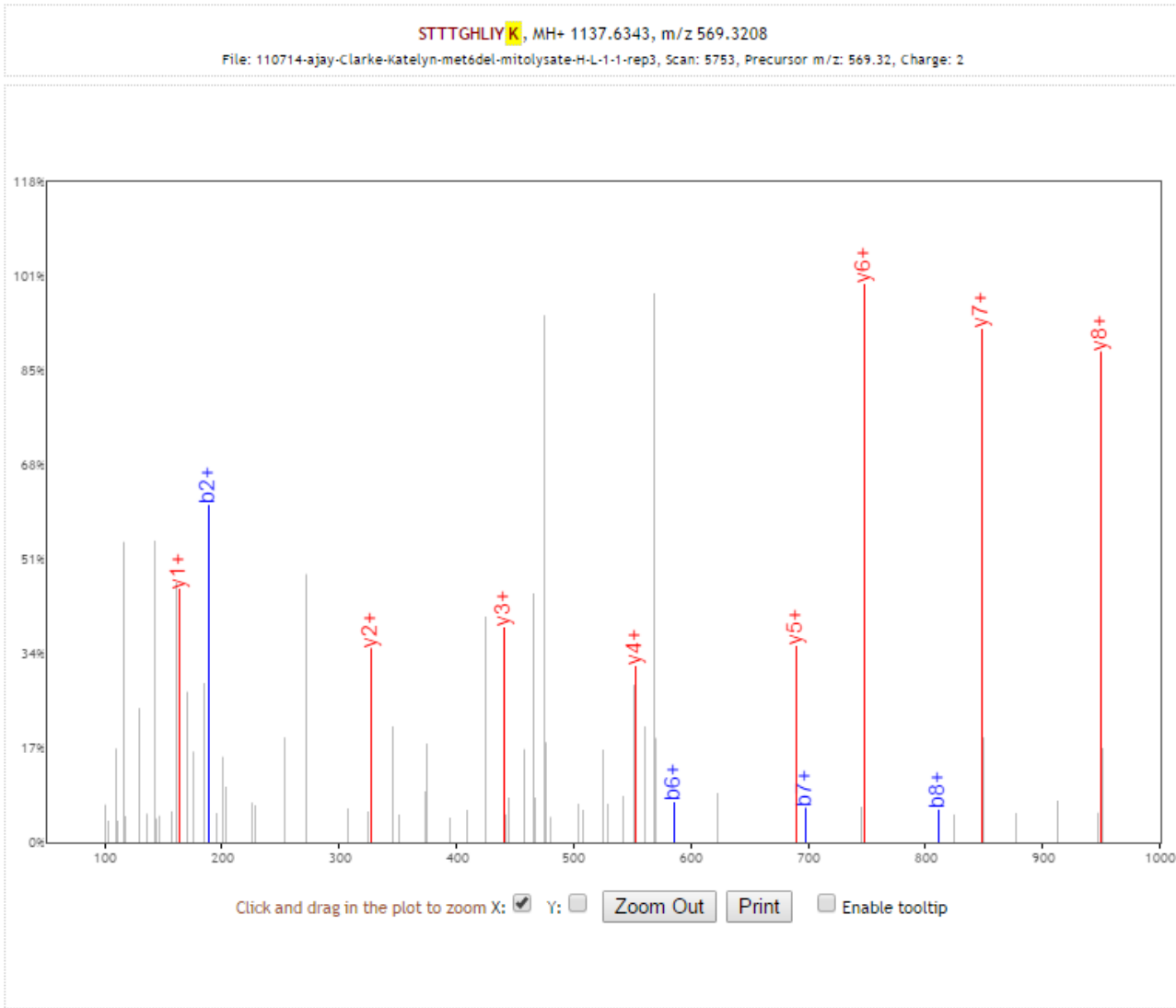
K.STTTGHLIYmonoK.C [20, 29]



Replicate 3

eEF1A

K.STTTGHLIYmonoK.C [20, 29]



b+	#	Seq #	y+
88.0393	1	S 10	
189.0870	2	T 9	1050.6023
290.1347	3	T 8	949.5546
391.1823	4	T 7	848.5069
448.2038	5	G 6	747.4592
585.2627	6	H 5	690.4378
698.3468	7	L 4	553.3789
811.4308	8	I 3	440.2948
974.4942	9	Y 2	327.2107
	10	K 1	164.1474

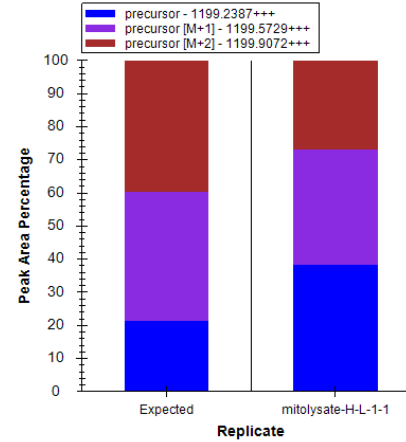
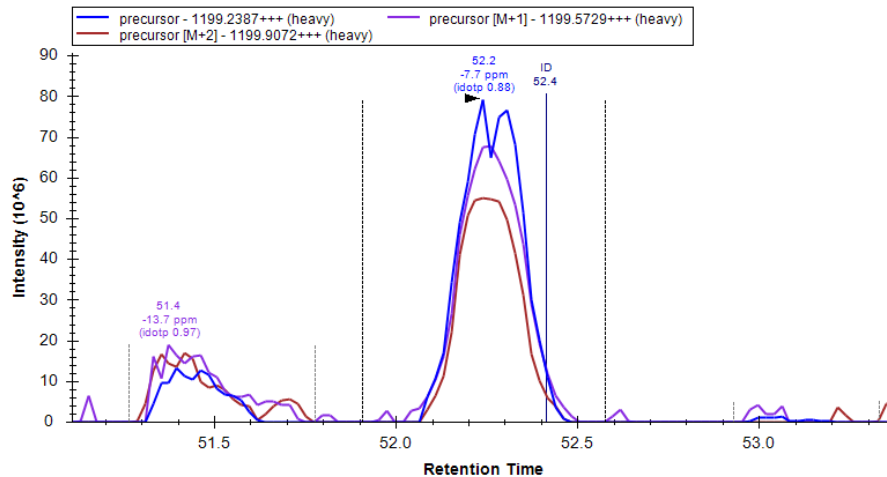
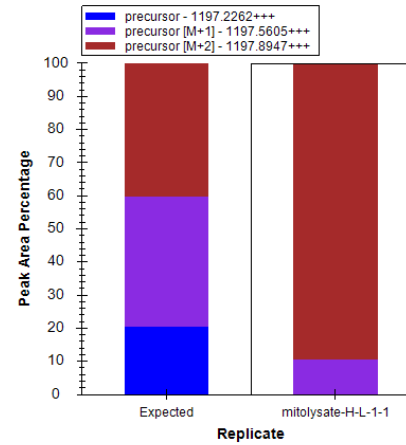
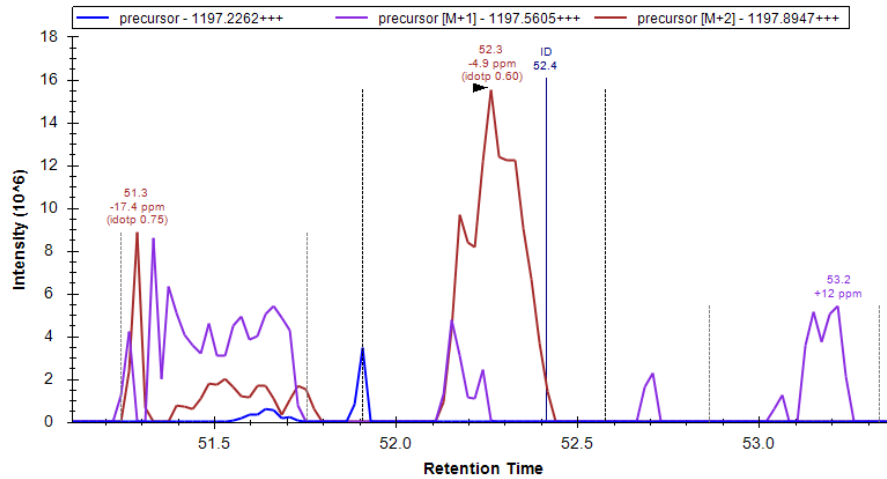
[\[Click\]](#) to move table

Static Modifications:
 C: 57.02146
 M: 3.0189

Variable Modifications:
 K: 17.0346

Pdb1

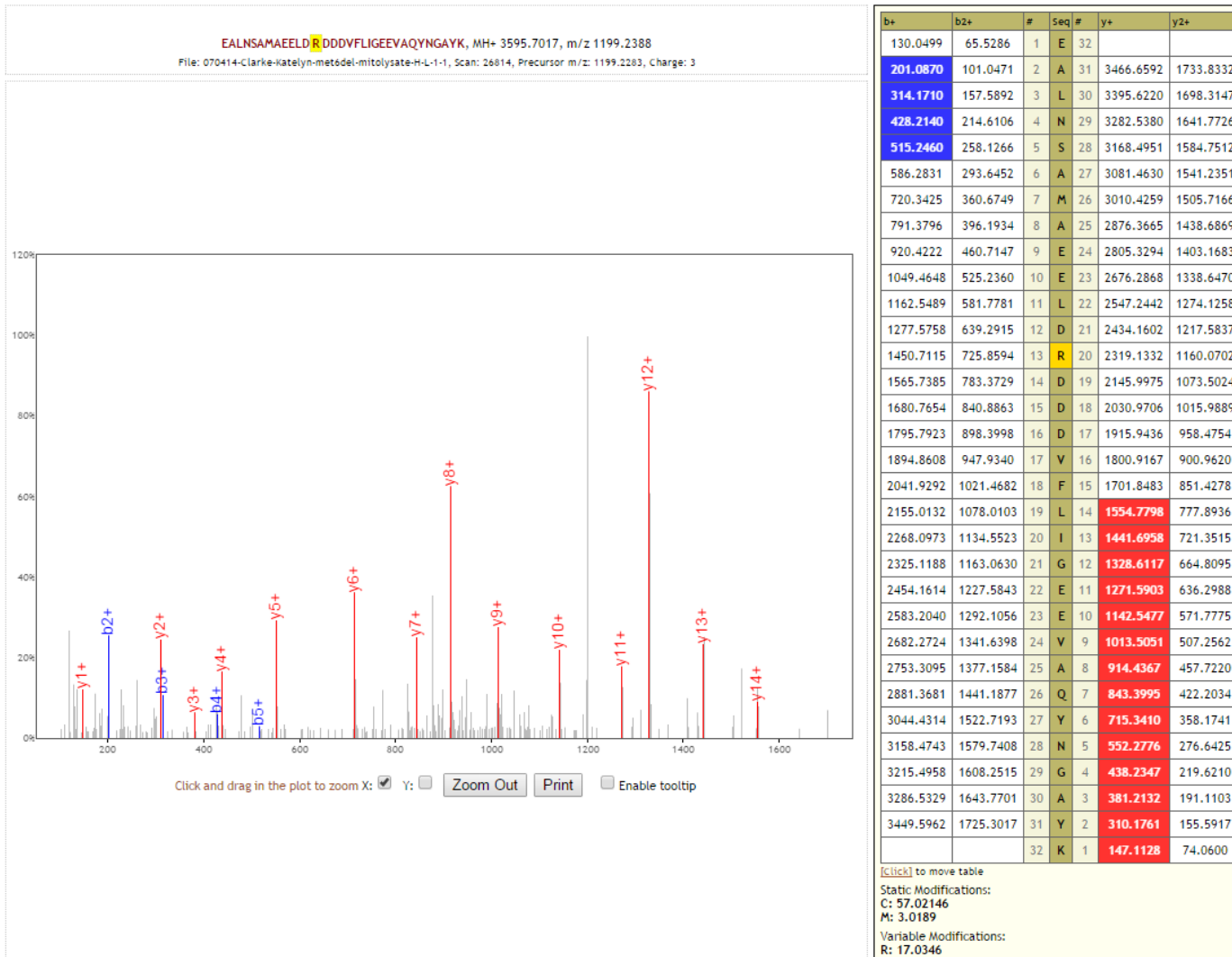
R.EALNSAMAEELDmono**R**DDDVFLIGEEVAQYNGAYK.V [42, 73]
(missed 1)



Replicate 1

Pdb1

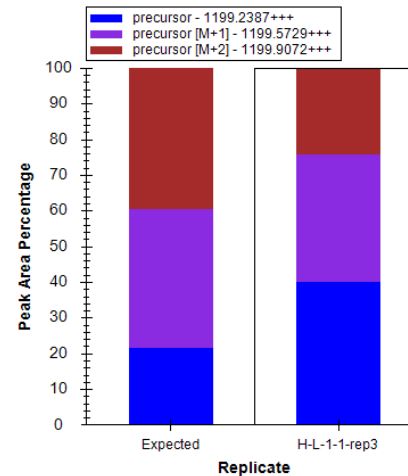
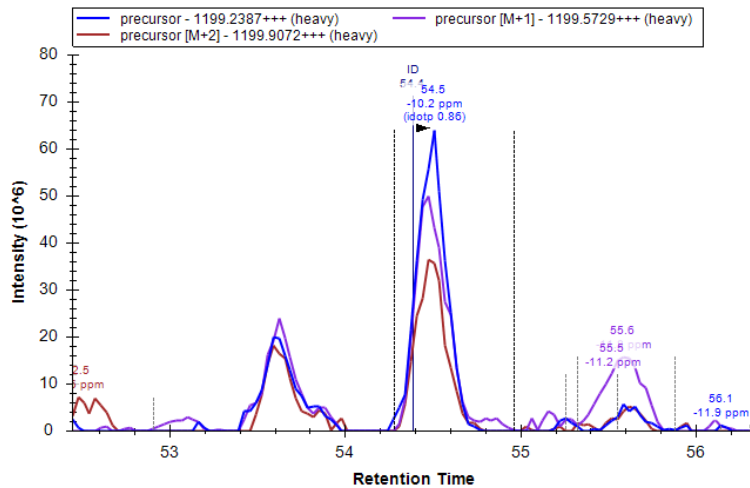
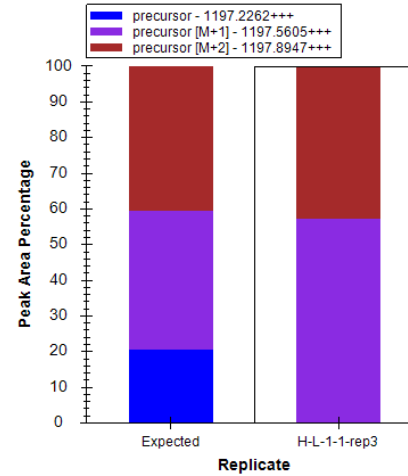
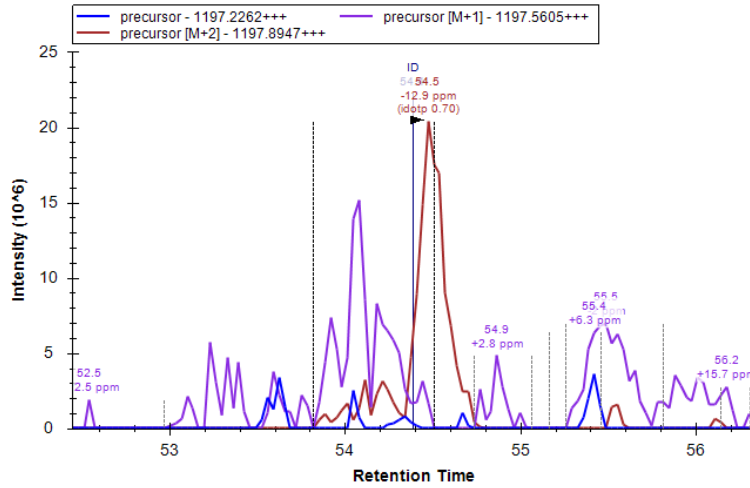
R.EALNSAMAEELDmono**R**DDDVFLIGEEVAQYNGAYK.V [42, 73] (missed 1)



Replicate 1

Pdb1

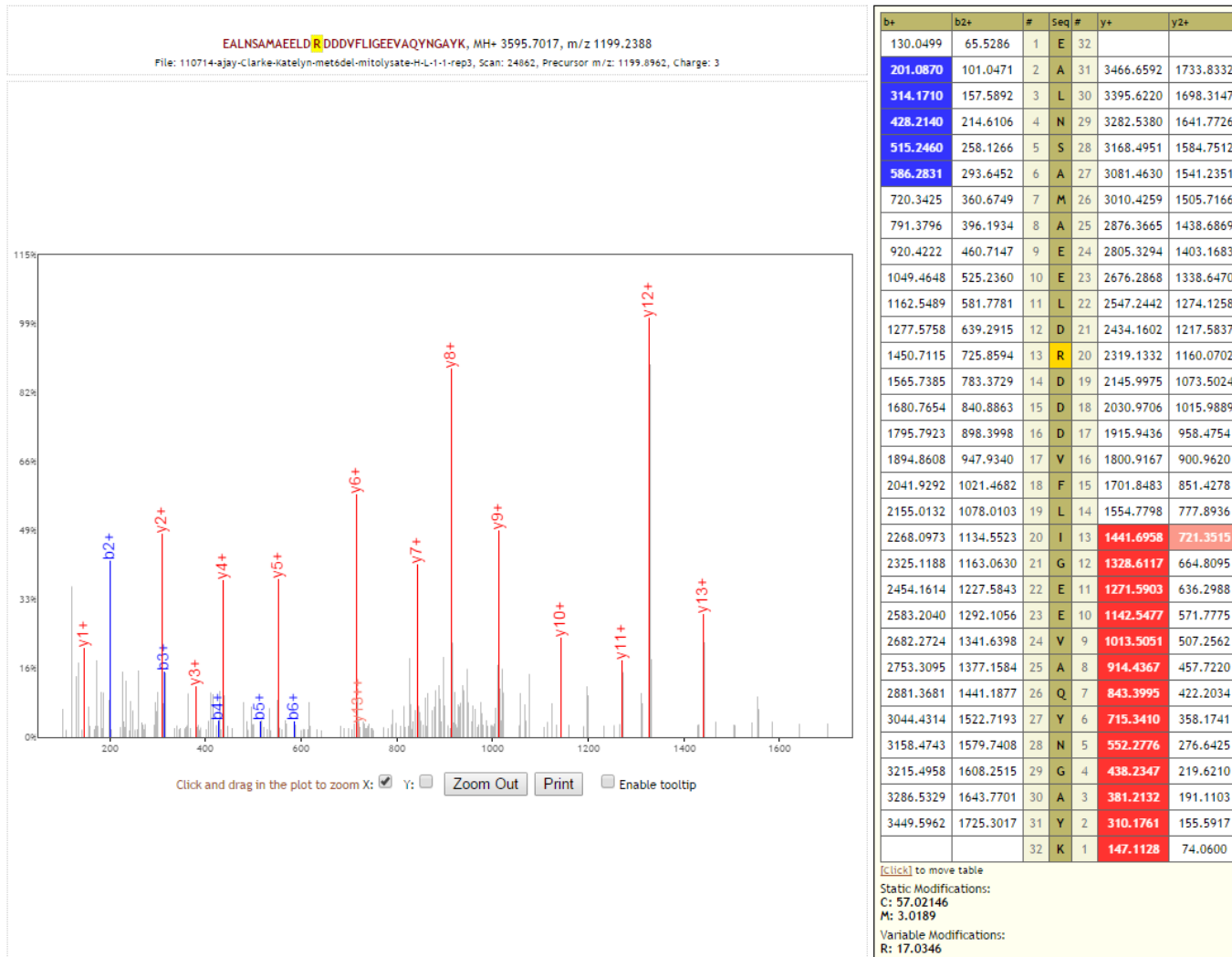
R.EALNSAMAEELDmono**R**DDDVFLIGEEVAQYNGAYK.V [42, 73]
(missed 1)



Replicate 3

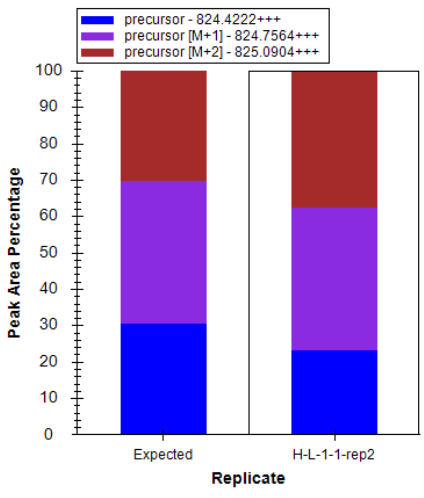
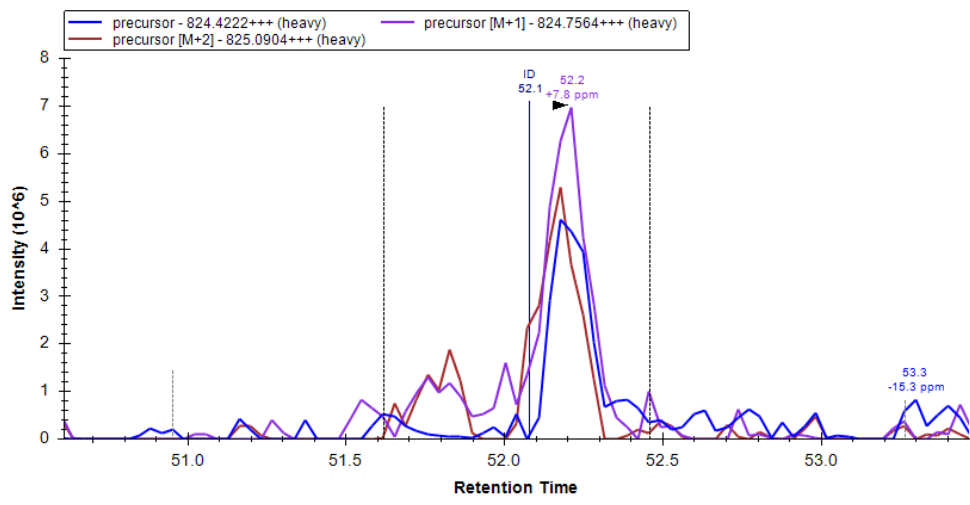
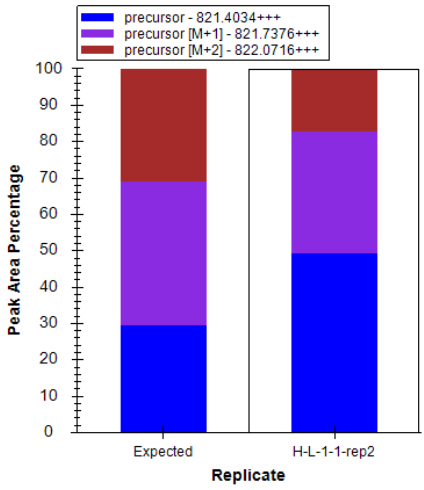
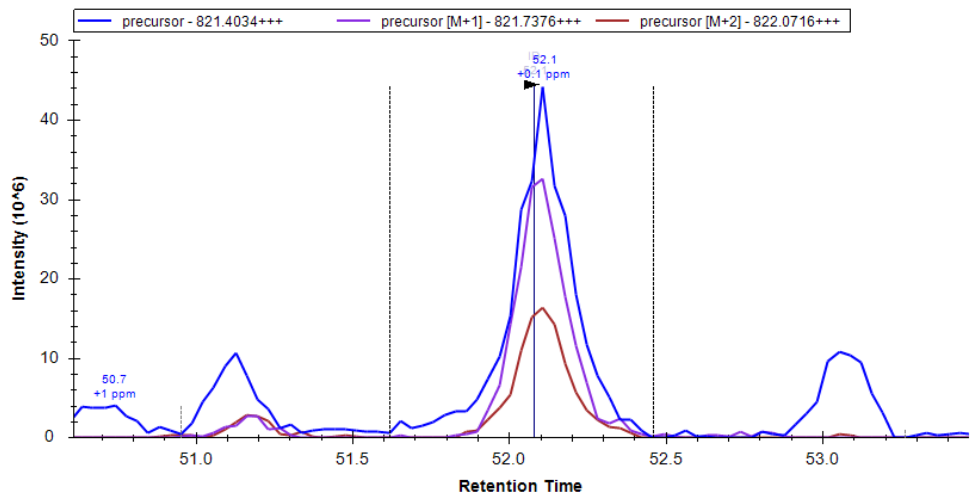
Pdb1

R.EALNSAMAEELDmono**R**DDDVFLIGEEVAQYNGAYK.V [42, 73]
(missed 1)



Ald5

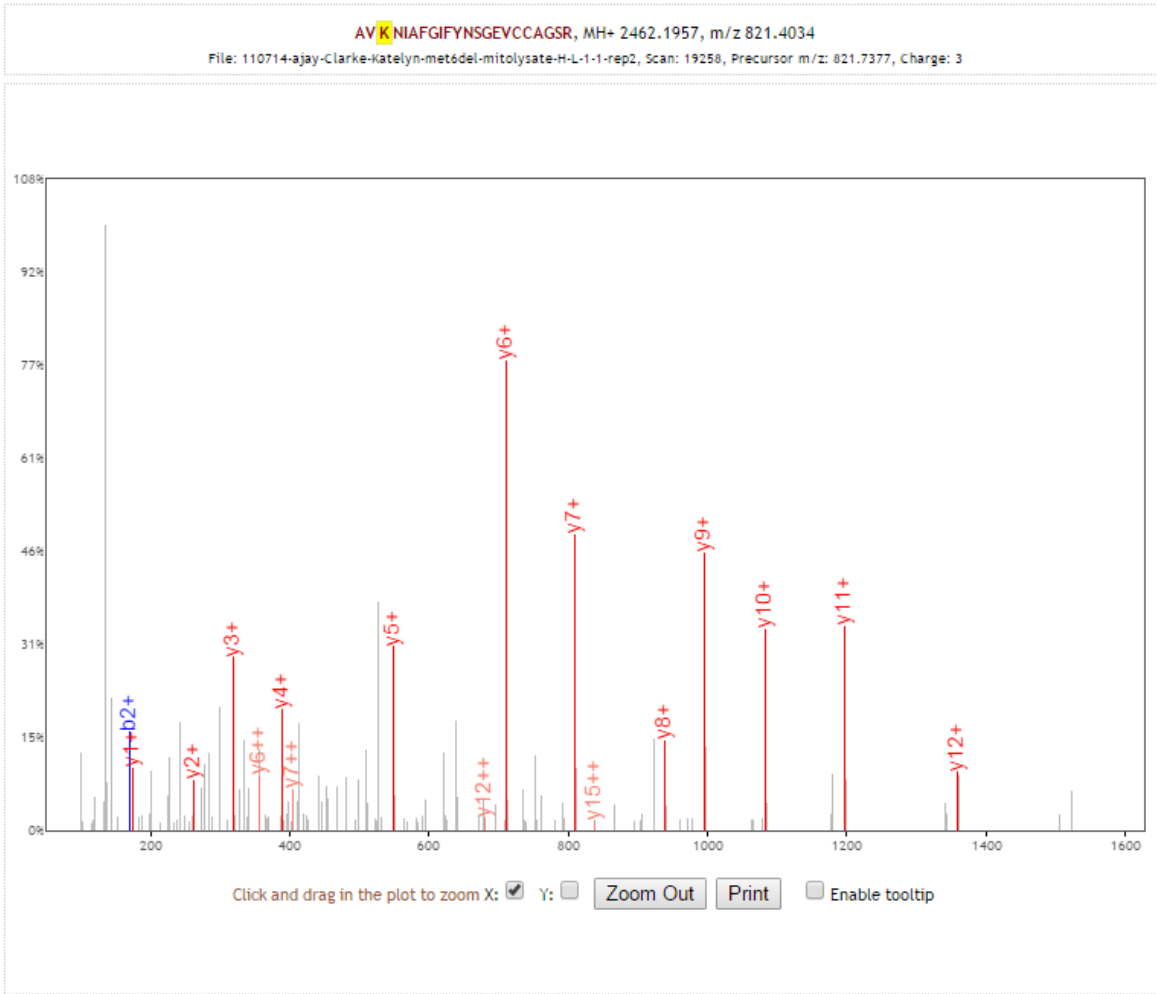
K.AVtri**K**NIAFGIFYNSGEVCCAGSR.I [305, 326] (missed 1)



Replicate 2

Ald5

K.AVtri**K**NIAFGIFYNSGEVCCAGSR.I [305, 326] (missed 1)

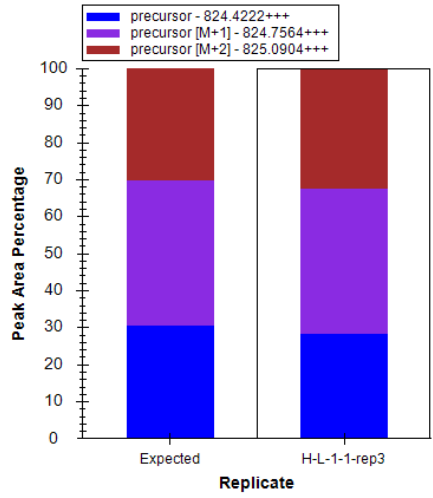
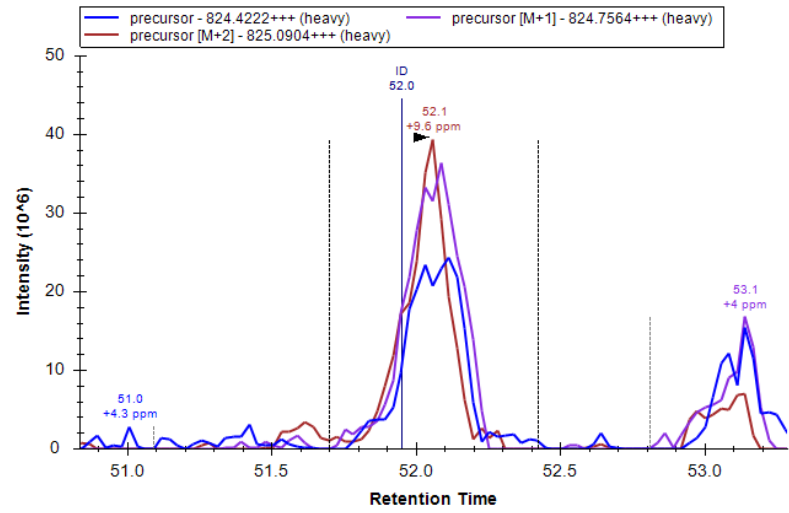
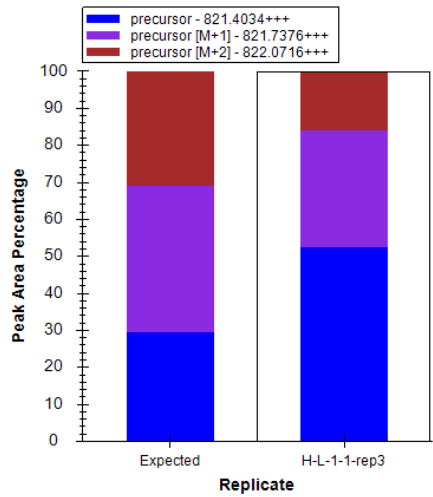
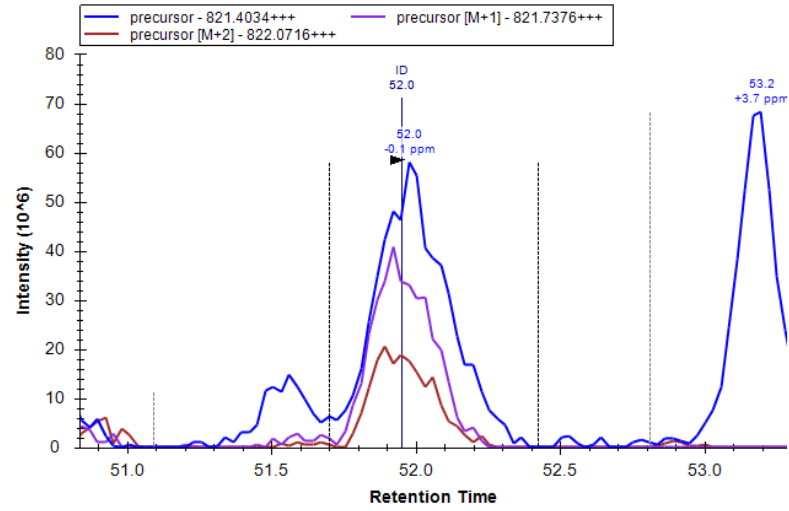


b+	b2+	#	Seq	#	y+	y2+
72.0444	36.5258	1	A	22		
171.1128	86.0600	2	V	21	2391.1585	1196.0829
341.2549	171.1311	3	K	20	2292.0901	1146.5487
455.2978	228.1525	4	N	19	2121.9481	1061.4777
568.3819	284.6946	5	I	18	2007.9051	1004.4562
639.4190	320.2131	6	A	17	1894.8211	947.9142
786.4874	393.7473	7	F	16	1823.7840	912.3956
843.5088	422.2581	8	G	15	1676.7155	838.8614
956.5929	478.8001	9	I	14	1619.6941	810.3507
1103.6613	552.3343	10	F	13	1506.6100	753.8086
1266.7247	633.8660	11	Y	12	1359.5416	680.2744
1380.7676	690.8874	12	N	11	1196.4783	598.7428
1467.7996	734.4034	13	S	10	1082.4353	541.7213
1524.8211	762.9142	14	G	9	995.4033	498.2053
1653.8637	827.4355	15	E	8	938.3819	469.6946
1752.9321	876.9697	16	V	7	809.3393	405.1733
1912.9627	956.9850	17	C	6	710.2708	355.6391
2072.9934	1037.0003	18	C	5	550.2402	275.6237
2144.0305	1072.5189	19	A	4	390.2096	195.6084
2201.0519	1101.0296	20	G	3	319.1724	160.0899
2288.0840	1144.5456	21	S	2	262.1510	131.5791
		22	R	1	175.1190	88.0631

[\[Click\]](#) to move table
 Static Modifications:
 C: 57.02146
 Variable Modifications:
 K: 42.0471

Ald5

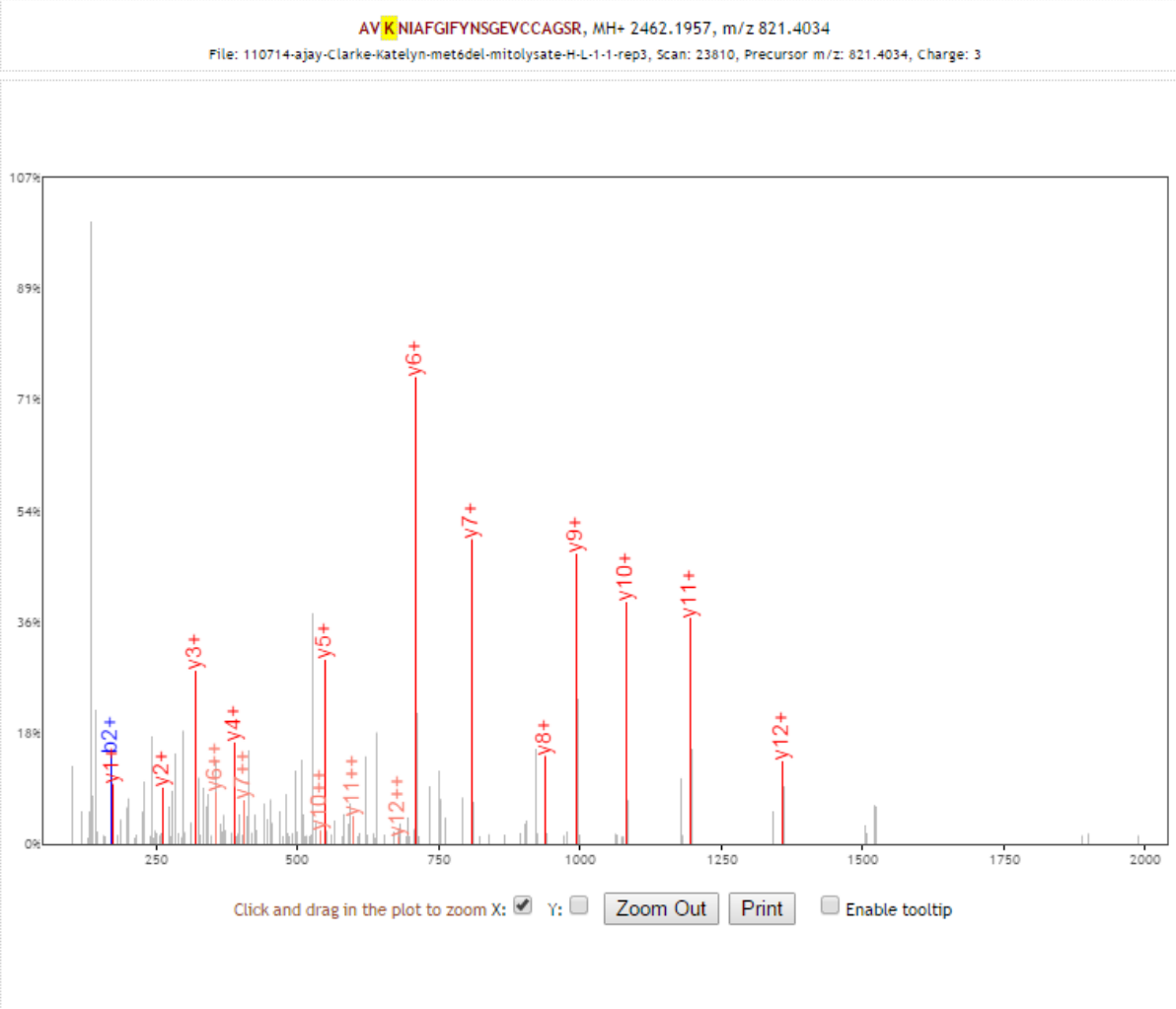
K.AVtri**K**NIAFGIFYNSGEVCCAGSR.I [305, 326] (missed 1)



Replicate 3

Ald5

K.AVtri**K**NIAFGIFYNSGEVCCAGSR.I [305, 326] (missed 1)

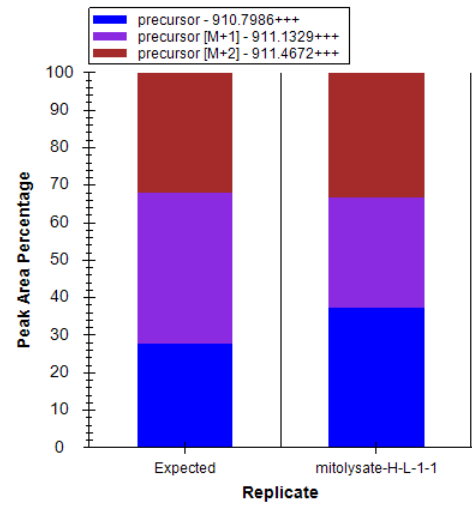
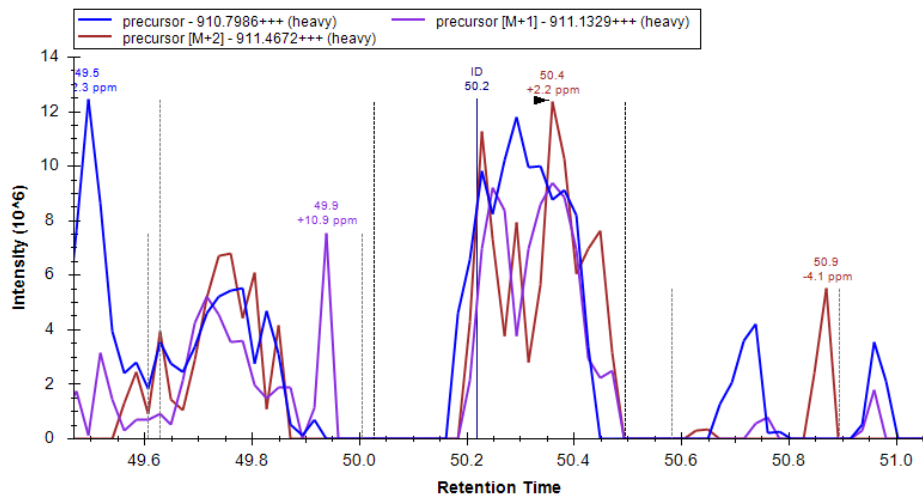
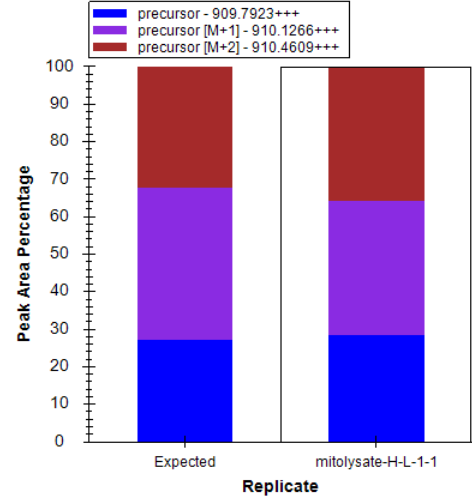
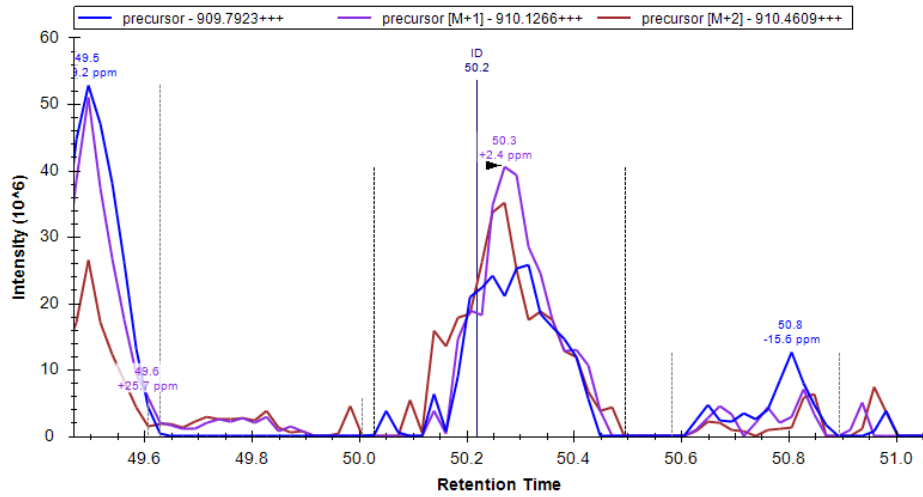


b+	b2+	#	Seq #	y+	y2+
72.0444	36.5258	1	A 22		
171.1128	86.0600	2	V 21	2391.1585	1196.0829
341.2549	171.1311	3	K 20	2292.0901	1146.5487
455.2978	228.1525	4	N 19	2121.9481	1061.4777
568.3819	284.6946	5	I 18	2007.9051	1004.4562
639.4190	320.2131	6	A 17	1894.8211	947.9142
786.4874	393.7473	7	F 16	1823.7840	912.3956
843.5088	422.2581	8	G 15	1676.7155	838.8614
956.5929	478.8001	9	I 14	1619.6941	810.3507
1103.6613	552.3343	10	F 13	1506.6100	753.8086
1266.7247	633.8660	11	Y 12	1359.5416	680.2744
1380.7676	690.8874	12	N 11	1196.4783	598.7428
1467.7996	734.4034	13	S 10	1082.4353	541.7213
1524.8211	762.9142	14	G 9	995.4033	498.2053
1653.8637	827.4355	15	E 8	938.3819	469.6946
1752.9321	876.9697	16	V 7	809.3393	405.1733
1912.9627	956.9850	17	C 6	710.2708	355.6391
2072.9934	1037.0003	18	C 5	550.2402	275.6237
2144.0305	1072.5189	19	A 4	390.2096	195.6084
2201.0519	1101.0296	20	G 3	319.1724	160.0899
2288.0840	1144.5456	21	S 2	262.1510	131.5791
		22	R 1	175.1190	88.0631

[\[Click\]](#) to move table
 Static Modifications:
 C: 57.02146
 Variable Modifications:
 K: 42.0471

Ssa4

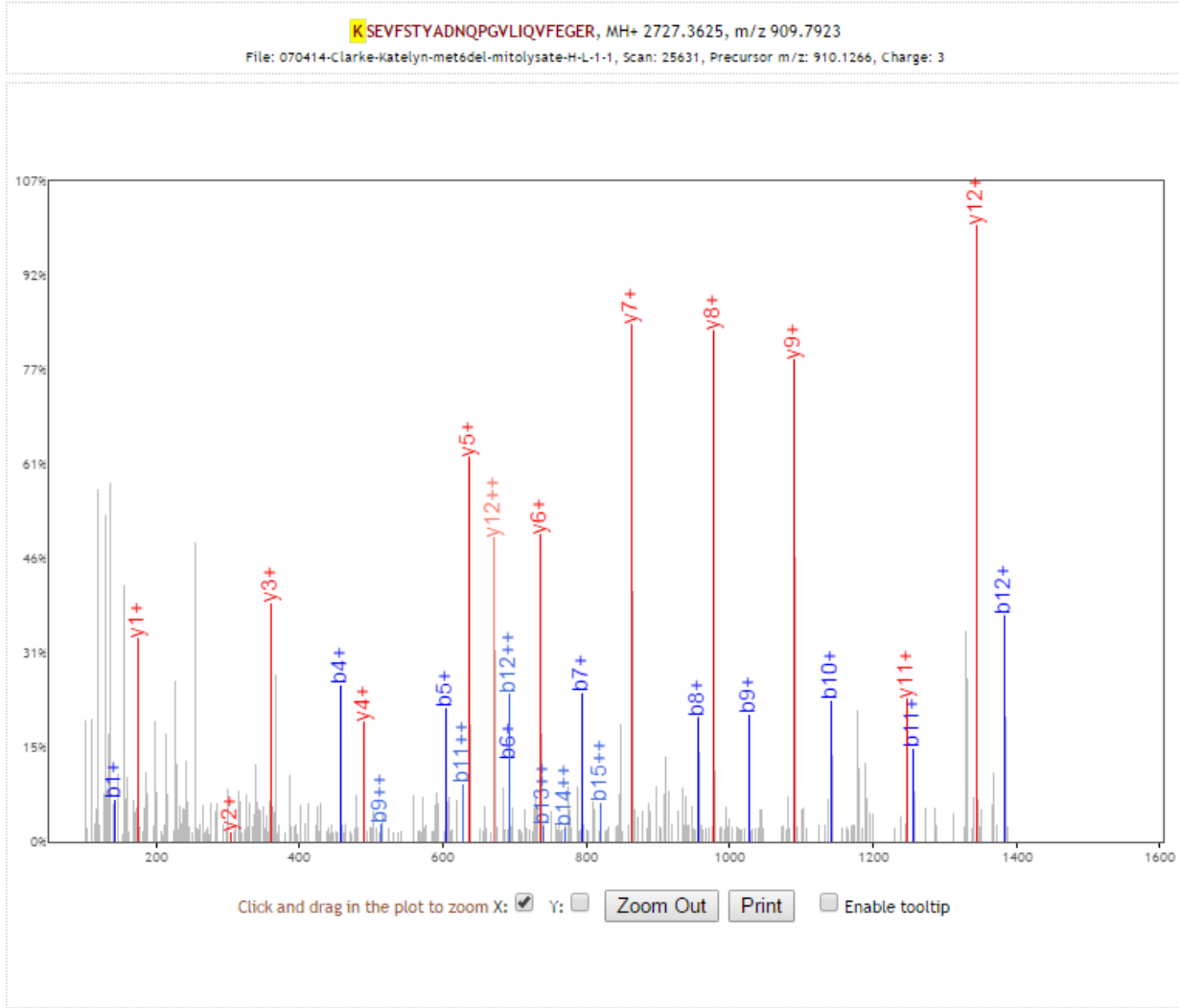
K.monoKSEVFSTYADNQPGLIQVFEGER.T [421, 444] (missed 1)



Replicate 1

Ssa4

K.mono**K**SEVFSTYADNQPGLVLIQVFEGE.R.T [421, 444] (missed 1)

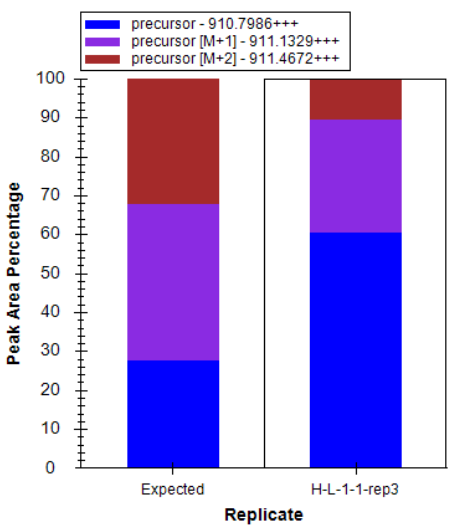
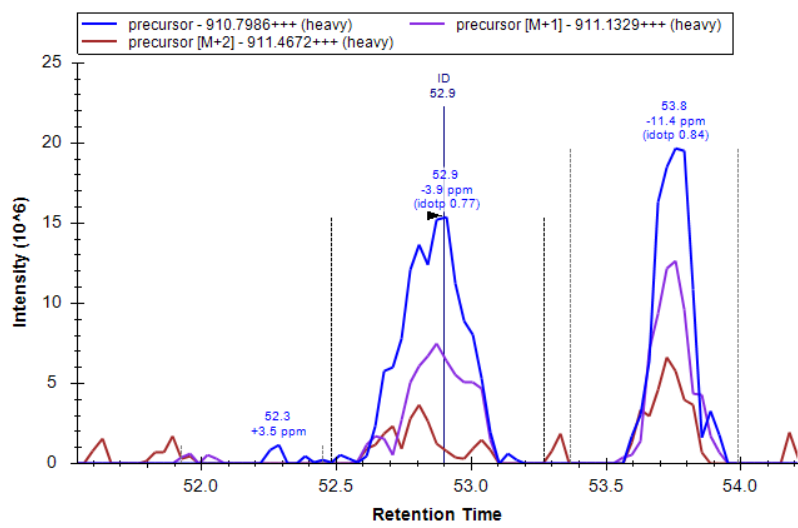
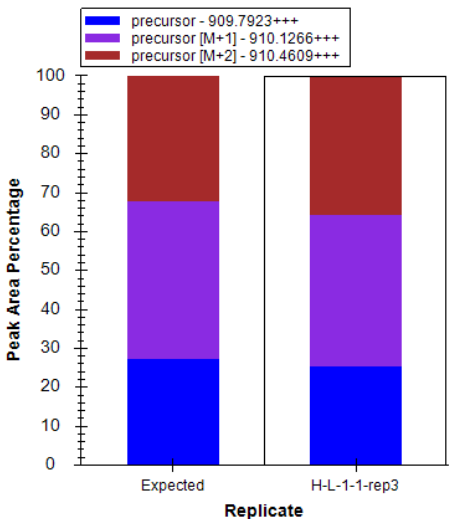
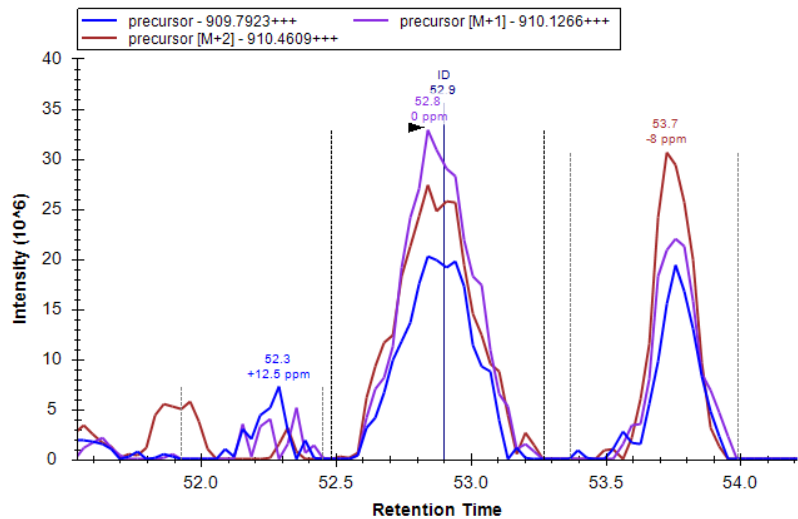


b+	b2+	#	Seq #	y+	y2+
143.1179	72.0626	1	K	24	
230.1500	115.5786	2	S	23	2585.2518 1293.1295
359.1926	180.0999	3	E	22	2498.2198 1249.6135
458.2610	229.6341	4	V	21	2369.1772 1185.0922
605.3294	303.1683	5	F	20	2270.1088 1135.5580
692.3614	346.6843	6	S	19	2123.0404 1062.0238
793.4091	397.2082	7	T	18	2036.0083 1018.5078
956.4724	478.7399	8	Y	17	1934.9607 967.9840
1027.5095	514.2584	9	A	16	1771.8973 886.4523
1142.5365	571.7719	10	D	15	1700.8602 850.9338
1256.5794	628.7933	11	N	14	1585.8333 793.4203
1384.6380	692.8226	12	Q	13	1471.7904 736.3988
1481.6907	741.3490	13	P	12	1343.7318 672.3695
1538.7122	769.8597	14	G	11	1246.6790 623.8431
1637.7806	819.3940	15	V	10	1189.6575 595.3324
1750.8647	875.9360	16	L	9	1090.5891 545.7982
1863.9488	932.4780	17	I	8	977.5051 489.2562
1992.0073	996.5073	18	Q	7	864.4210 432.7141
2091.0757	1046.0415	19	V	6	736.3624 368.6849
2238.1442	1119.5757	20	F	5	637.2940 319.1506
2367.1868	1184.0970	21	E	4	490.2256 245.6164
2424.2082	1212.6077	22	G	3	361.1830 181.0951
2553.2508	1277.1290	23	E	2	304.1615 152.5844
		24	R	1	175.1190 88.0631

[\[click\]](#) to move table
 Static Modifications:
 C: 57.02146
 Variable Modifications:
 K: 14.0157

Ssa4

K.mono**K**SEVFSTYADNQPGLIQVFEGER.T [421, 444] (missed 1)



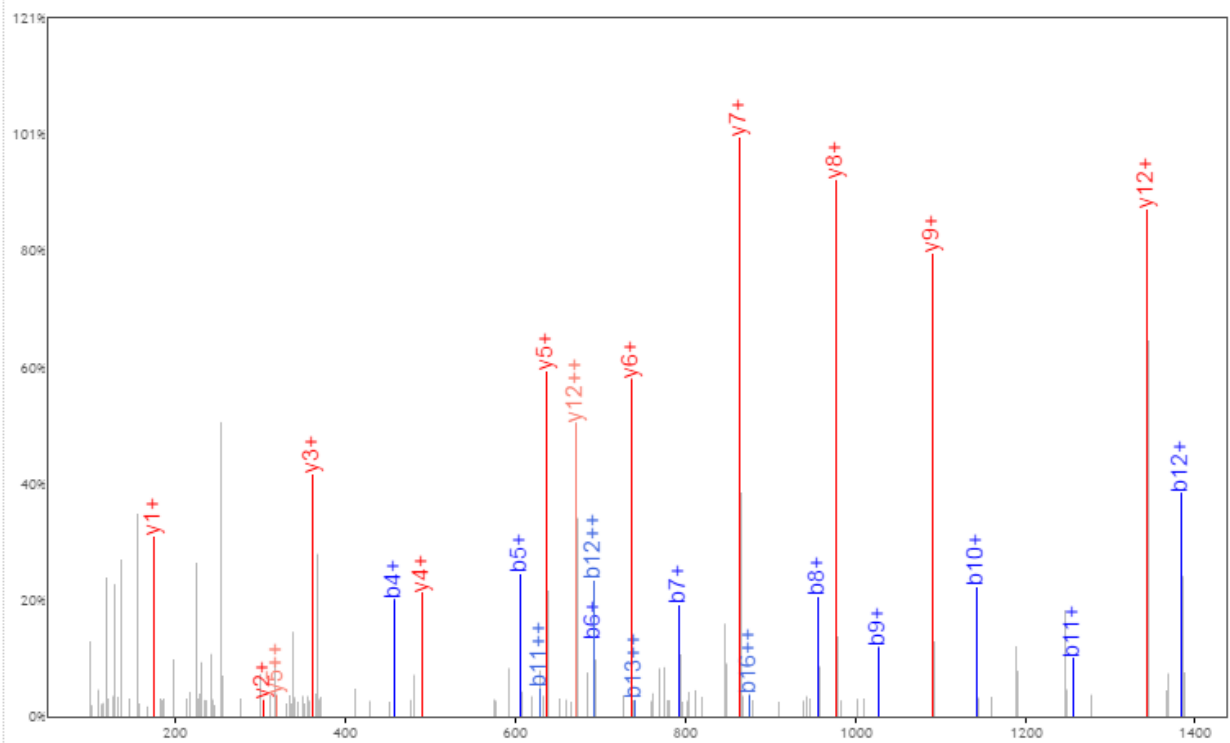
Replicate 3

Ssa4

K.mono**K**SEVFSTYADNQPGLVLIQVFEGE.R.T [421, 444] (missed 1)

KSEVFSTYADNQPGLVLIQVFEGE.R, MH+ 2727.3625, m/z 909.7923

File: 110714-ajay-Clarke-Katelyn-met6del-mitolytate-H-L-1-1-rep3, Scan: 24214, Precursor m/z: 910.1284, Charge: 3



Click and drag in the plot to zoom X: Y: Zoom Out Print Enable tooltip

b+	b2+	#	Seq #	y+	y2+
143.1179	72.0626	1	K 24		
230.1500	115.5786	2	S 23	2585.2518	1293.1295
359.1926	180.0999	3	E 22	2498.2198	1249.6135
458.2610	229.6341	4	V 21	2369.1772	1185.0922
605.3294	303.1683	5	F 20	2270.1088	1135.5580
692.3614	346.6843	6	S 19	2123.0404	1062.0238
793.4091	397.2082	7	T 18	2036.0083	1018.5078
956.4724	478.7399	8	Y 17	1934.9607	967.9840
1027.5095	514.2584	9	A 16	1771.8973	886.4523
1142.5365	571.7719	10	D 15	1700.8602	850.9338
1256.5794	628.7933	11	N 14	1585.8333	793.4203
1384.6380	692.8226	12	Q 13	1471.7904	736.3988
1481.6907	741.3490	13	P 12	1343.7318	672.3695
1538.7122	769.8597	14	G 11	1246.6790	623.8431
1637.7806	819.3940	15	V 10	1189.6575	595.3324
1750.8647	875.9360	16	L 9	1090.5891	545.7982
1863.9488	932.4780	17	I 8	977.5051	489.2562
1992.0073	996.5073	18	Q 7	864.4210	432.7141
2091.0757	1046.0415	19	V 6	736.3624	368.6849
2238.1442	1119.5757	20	F 5	637.2940	319.1506
2367.1868	1184.0970	21	E 4	490.2256	245.6164
2424.2082	1212.6077	22	G 3	361.1830	181.0951
2553.2508	1277.1290	23	E 2	304.1615	152.5844
		24	R 1	175.1190	88.0631

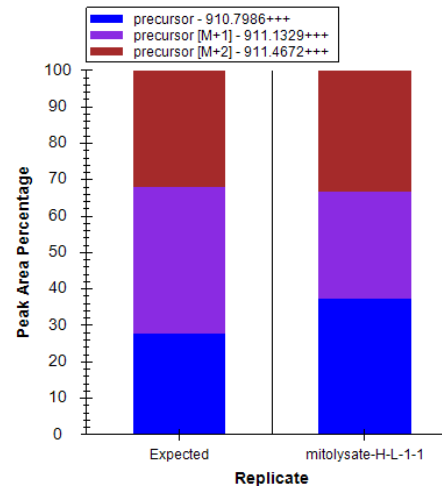
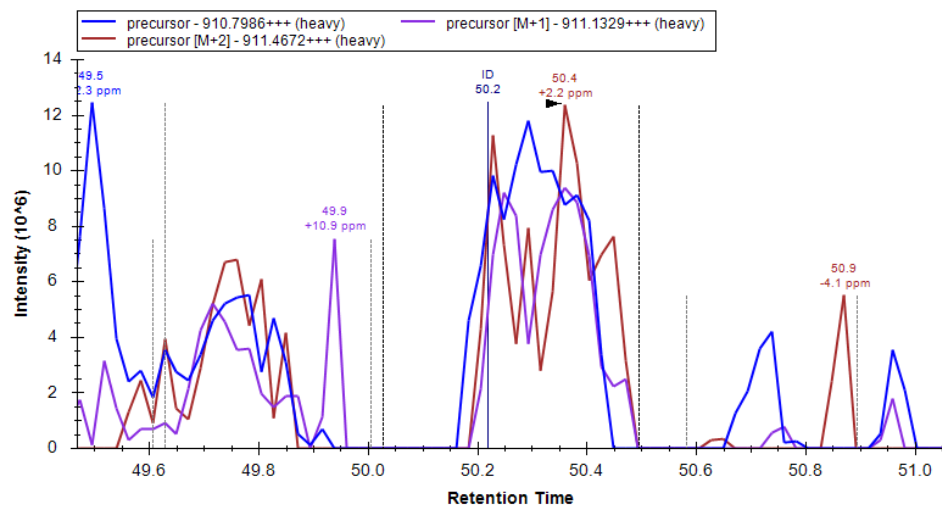
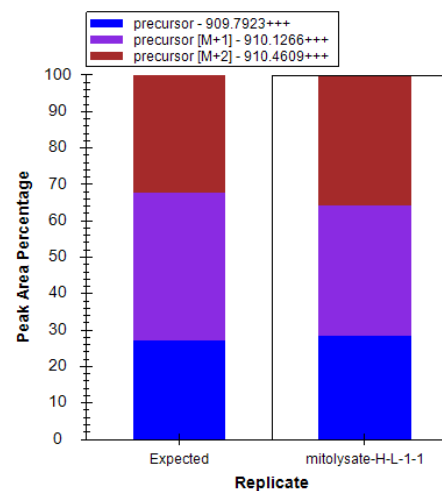
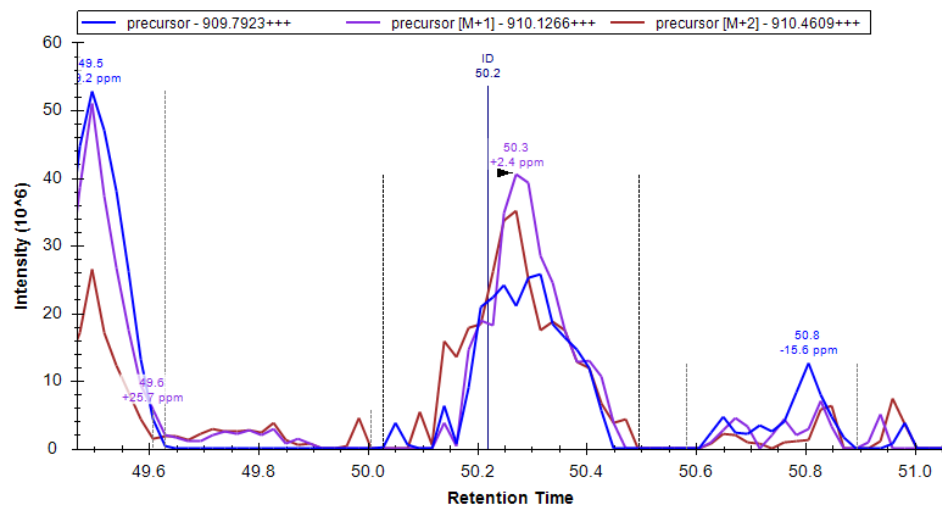
[\[click\]](#) to move table

Static Modifications:
C: 57.02146

Variable Modifications:
K: 14.0157

Ssa2

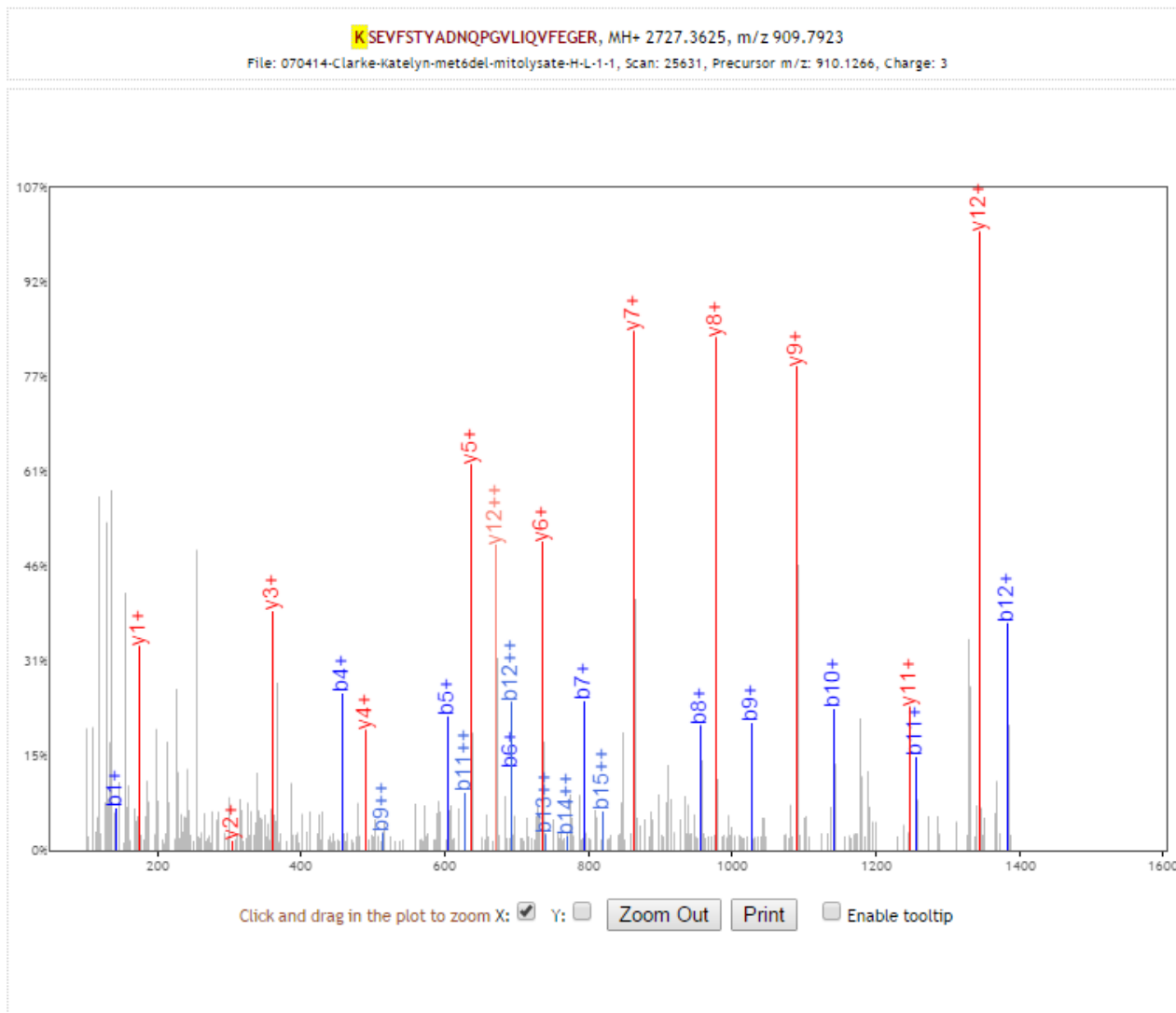
K.mono**K**SEVFSTYADNQPGLIQVFEGER.A [420, 443] (missed 1)



Replicate 1

Ssa2

K.mono**K**SEVFSTYADNQPGLVLIQVFEGE.R.A [420, 443] (missed 1)



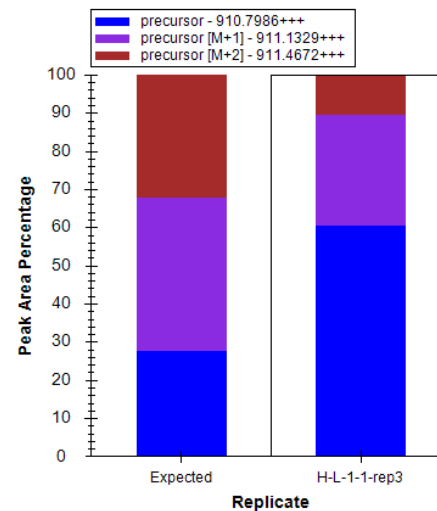
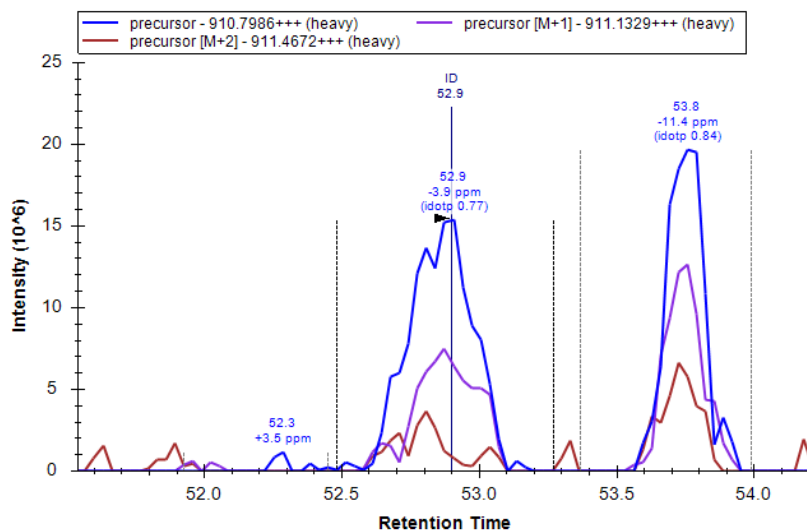
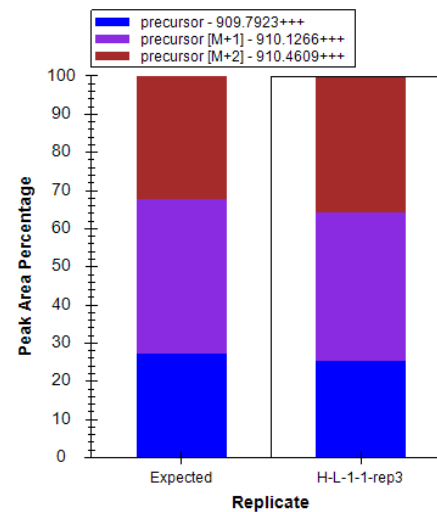
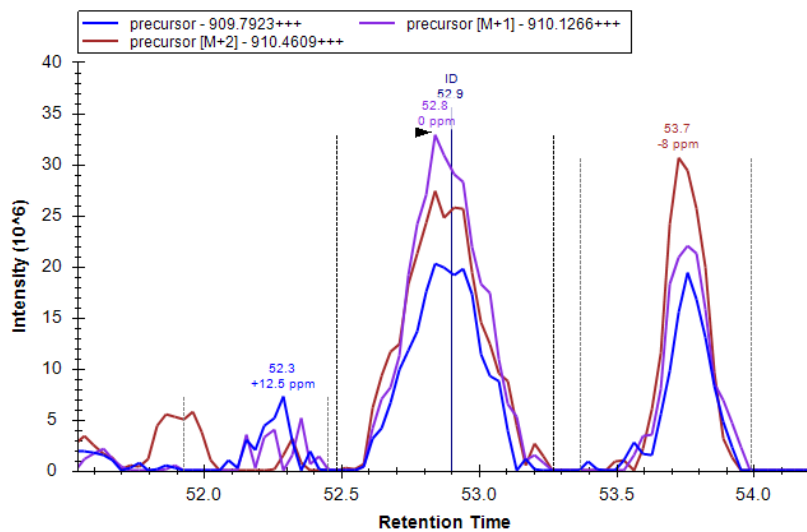
b+	b2+	#	Seq #	y+	y2+
143.1179	72.0626	1	K	24	
230.1500	115.5786	2	S	23	2585.2518 1293.1295
359.1926	180.0999	3	E	22	2498.2198 1249.6135
458.2610	229.6341	4	V	21	2369.1772 1185.0922
605.3294	303.1683	5	F	20	2270.1088 1135.5580
692.3614	346.6843	6	S	19	2123.0404 1062.0238
793.4091	397.2082	7	T	18	2036.0083 1018.5078
956.4724	478.7399	8	Y	17	1934.9607 967.9840
1027.5095	514.2584	9	A	16	1771.8973 886.4523
1142.5365	571.7719	10	D	15	1700.8602 850.9338
1256.5794	628.7933	11	N	14	1585.8333 793.4203
1384.6380	692.8226	12	Q	13	1471.7904 736.3988
1481.6907	741.3490	13	P	12	1343.7318 672.3695
1538.7122	769.8597	14	G	11	1246.6790 623.8431
1637.7806	819.3940	15	V	10	1189.6575 595.3324
1750.8647	875.9360	16	L	9	1090.5891 545.7982
1863.9488	932.4780	17	I	8	977.5051 489.2562
1992.0073	996.5073	18	Q	7	864.4210 432.7141
2091.0757	1046.0415	19	V	6	736.3624 368.6849
2238.1442	1119.5757	20	F	5	637.2940 319.1506
2367.1868	1184.0970	21	E	4	490.2256 245.6164
2424.2082	1212.6077	22	G	3	361.1830 181.0951
2553.2508	1277.1290	23	E	2	304.1615 152.5844
		24	R	1	175.1190 88.0631

[\[Click\]](#) to move table
Static Modifications:
C: 57.02146
Variable Modifications:
K: 14.0157

Replicate 1

Ssa2

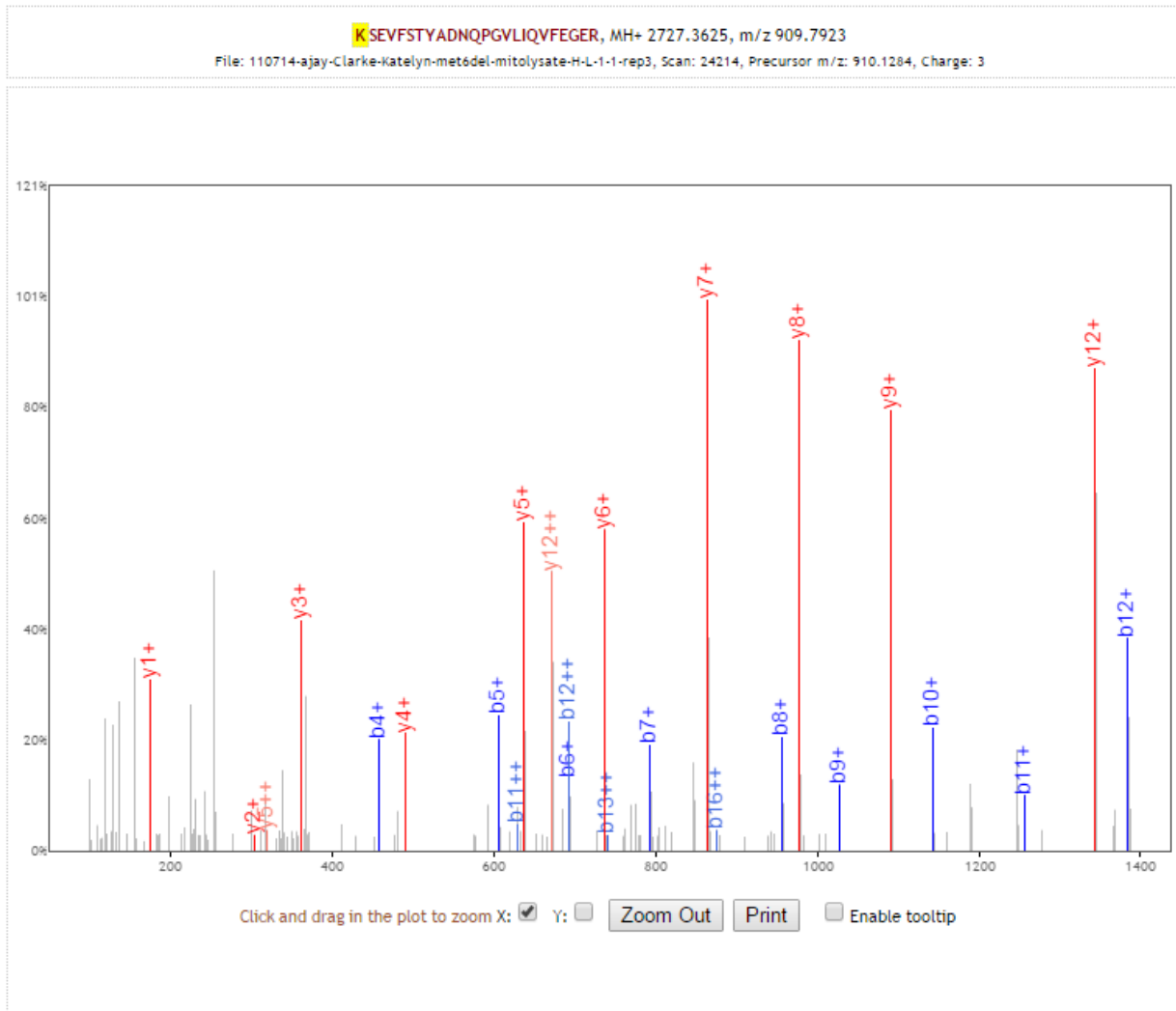
K.mono**K**SEVFSTYADNQPGLIQLVFEGER.A [420, 443] (missed 1)



Replicate 3

Ssa2

K.mono**K**SEVFSTYADNQPGLIQVFEGER.A [420, 443] (missed 1)

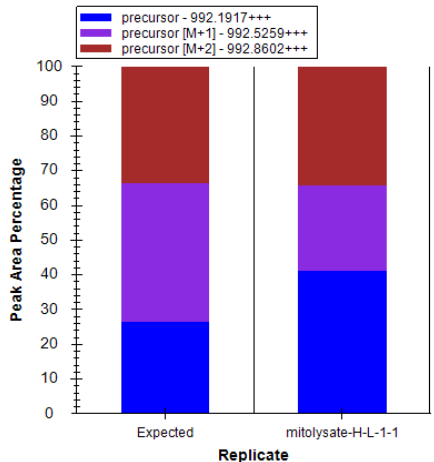
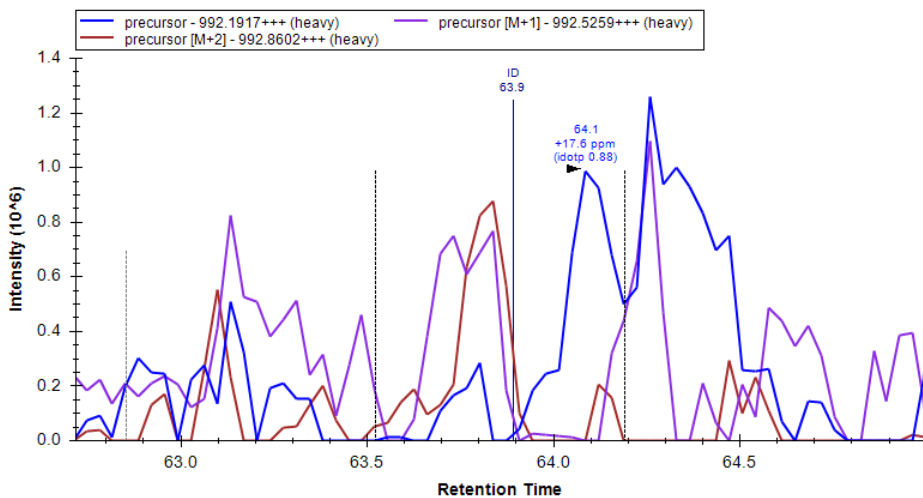
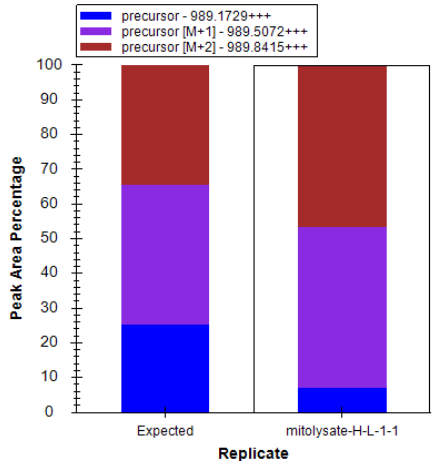
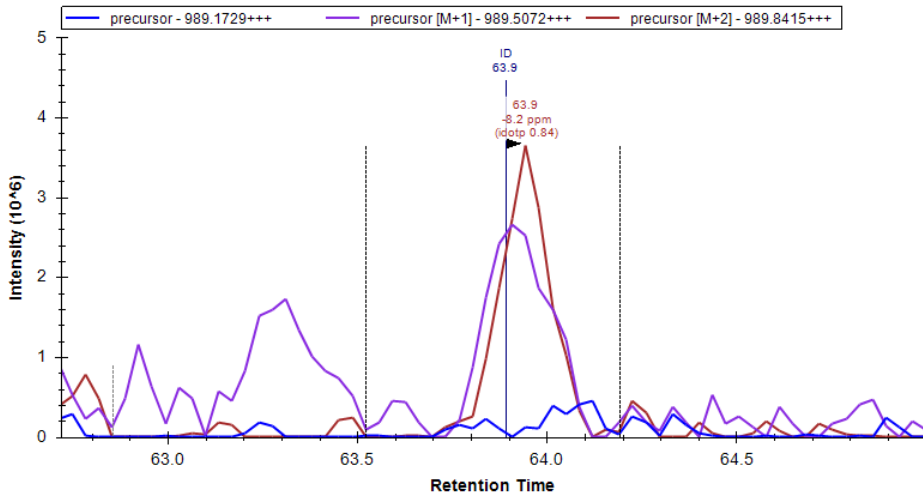


b+	b2+	#	Seq #	y+	y2+
143.1179	72.0626	1	K	24	
230.1500	115.5786	2	S	23	2585.2518 1293.1295
359.1926	180.0999	3	E	22	2498.2198 1249.6135
458.2610	229.6341	4	V	21	2369.1772 1185.0922
605.3294	303.1683	5	F	20	2270.1088 1135.5580
692.3614	346.6843	6	S	19	2123.0404 1062.0238
793.4091	397.2082	7	T	18	2036.0083 1018.5078
956.4724	478.7399	8	Y	17	1934.9607 967.9840
1027.5095	514.2584	9	A	16	1771.8973 886.4523
1142.5365	571.7719	10	D	15	1700.8602 850.9338
1256.5794	628.7933	11	N	14	1585.8333 793.4203
1384.6380	692.8226	12	Q	13	1471.7904 736.3988
1481.6907	741.3490	13	P	12	1343.7318 672.3695
1538.7122	769.8597	14	G	11	1246.6790 623.8431
1637.7806	819.3940	15	V	10	1189.6575 595.3324
1750.8647	875.9360	16	L	9	1090.5891 545.7982
1863.9488	932.4780	17	I	8	977.5051 489.2562
1992.0073	996.5073	18	Q	7	864.4210 432.7141
2091.0757	1046.0415	19	V	6	736.3624 368.6849
2238.1442	1119.5757	20	F	5	637.2940 319.1506
2367.1868	1184.0970	21	E	4	490.2256 245.6164
2424.2082	1212.6077	22	G	3	361.1830 181.0951
2553.2508	1277.1290	23	E	2	304.1615 152.5844
		24	R	1	175.1190 88.0631

[\[Click\]](#) to move table
 Static Modifications:
 C: 57.02146
 Variable Modifications:
 K: 14.0157

Hsp60

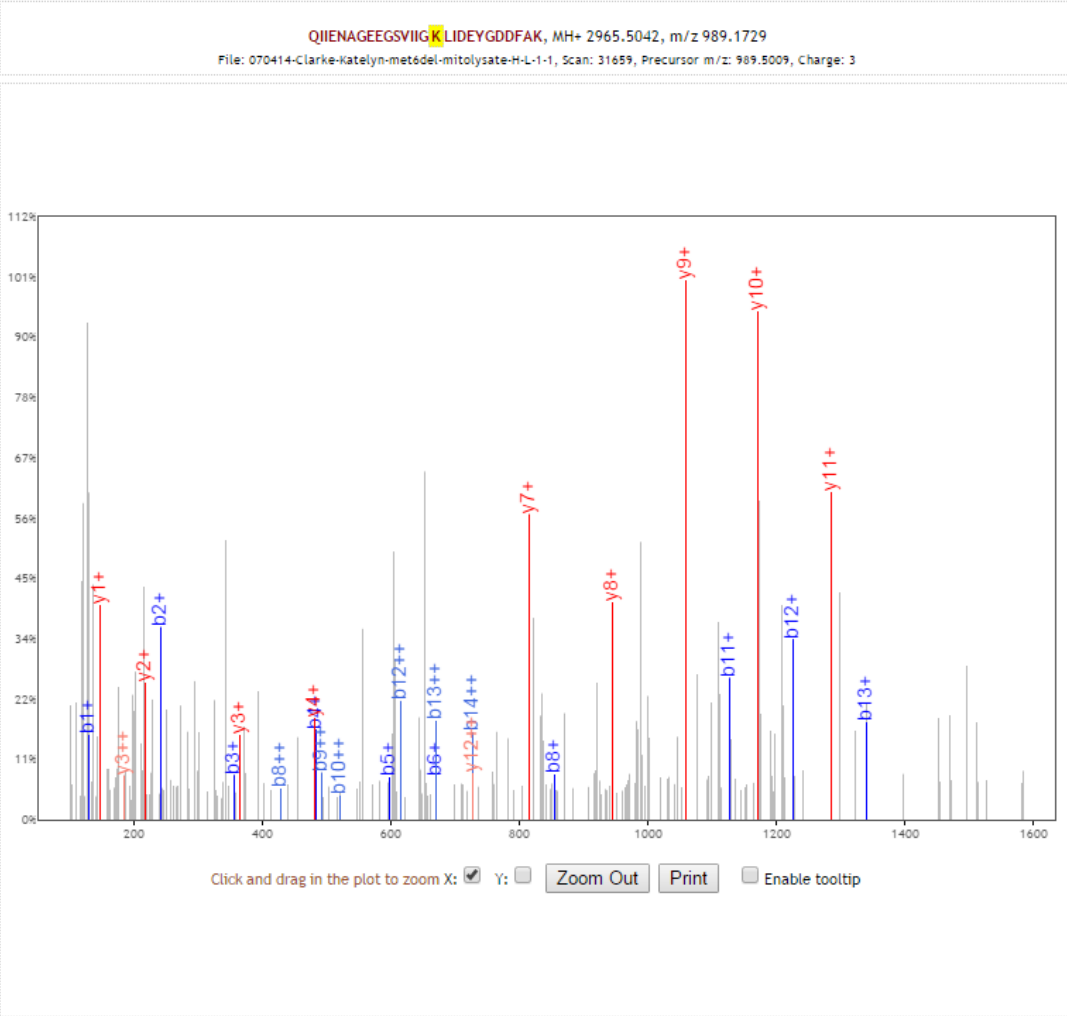
K.QIENAGEEGSVIIGtri**K**LIDEYGDDFAK.G [474, 500] (missed 1)



Replicate 1

Hsp60

K.QIENAGEEGSVIIGtri**K**LIDEYGDDFAK.G [474, 500] (missed 1)

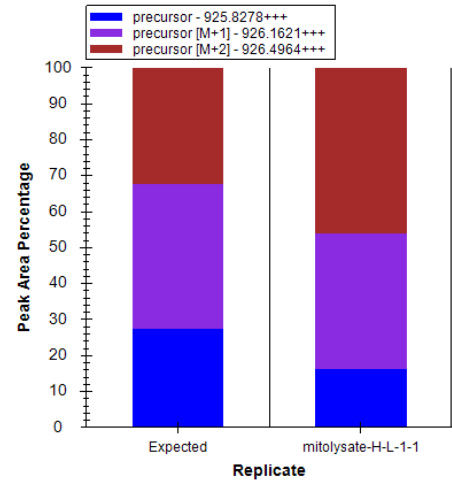
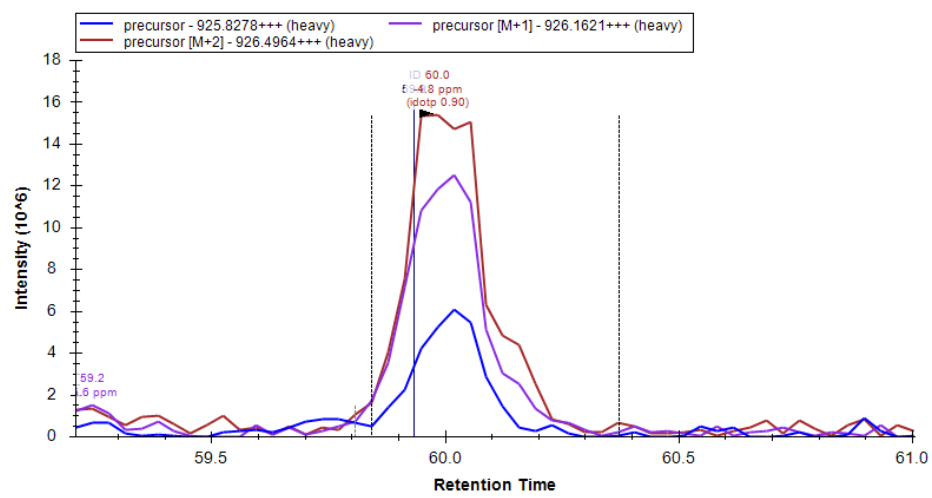
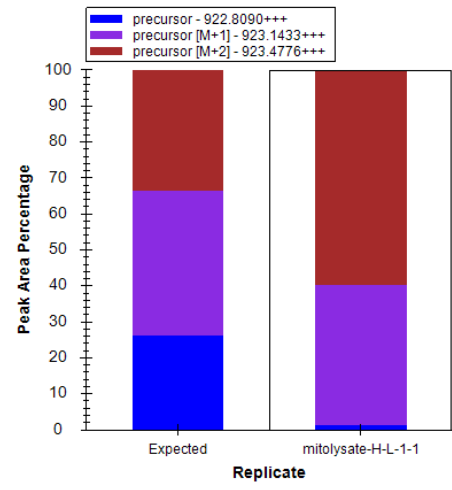
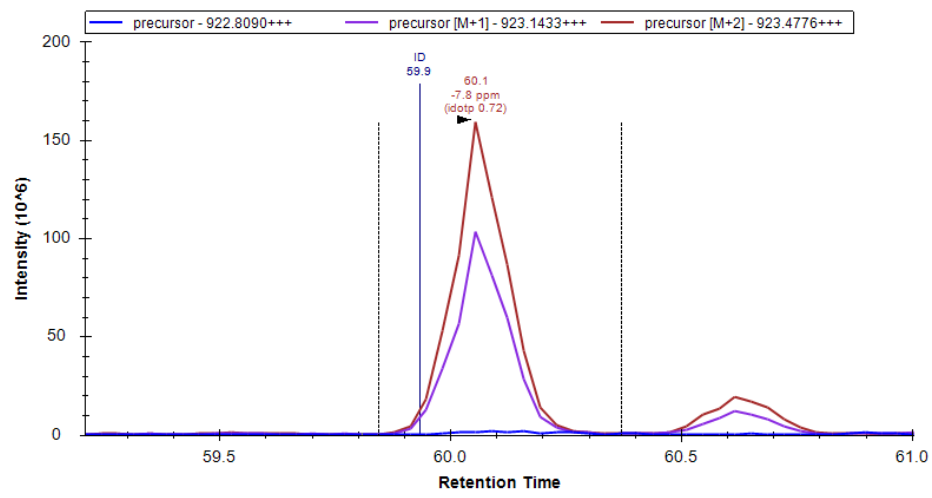


b+	b2+	#	Seq #	y+	y2+
129.0659	65.0366	1	Q	27	
242.1499	121.5786	2	I	26	2837.4456 1419.2265
355.2340	178.1206	3	I	25	2724.3616 1362.6844
484.2766	242.6419	4	E	24	2611.2775 1306.1424
598.3195	299.6634	5	N	23	2482.2349 1241.6211
669.3566	335.1819	6	A	22	2368.1920 1184.5996
726.3781	363.6927	7	G	21	2297.1549 1149.0811
855.4207	428.2140	8	E	20	2240.1334 1120.5703
984.4633	492.7353	9	E	19	2111.0908 1056.0491
1041.4847	521.2460	10	G	18	1982.0482 991.5278
1128.5168	564.7620	11	S	17	1925.0268 963.0170
1227.5852	614.2962	12	V	16	1837.9947 919.5010
1340.6692	670.8383	13	I	15	1738.9263 869.9668
1453.7533	727.3803	14	I	14	1625.8423 813.4248
1510.7748	755.8910	15	G	13	1512.7582 756.8827
1680.9168	840.9621	16	K	12	1455.7367 728.3720
1794.0009	897.5041	17	L	11	1285.5947 643.3010
1907.0850	954.0461	18	I	10	1172.5106 586.7589
2022.1119	1011.5596	19	D	9	1059.4265 530.2169
2151.1545	1076.0809	20	E	8	944.3996 472.7034
2314.2178	1157.6125	21	Y	7	815.3570 408.1821
2371.2393	1186.1233	22	G	6	652.2937 326.6505
2486.2662	1243.6368	23	D	5	595.2722 298.1397
2601.2932	1301.1502	24	D	4	480.2453 240.6263
2748.3616	1374.6844	25	F	3	365.2183 183.1128
2819.3987	1410.2030	26	A	2	218.1499 109.5786
		27	K	1	147.1128 74.0600

[\[Click\]](#) to move table
 Static Modifications:
 C: 57.02146
 Variable Modifications:
 K: 42.0471

Ald4

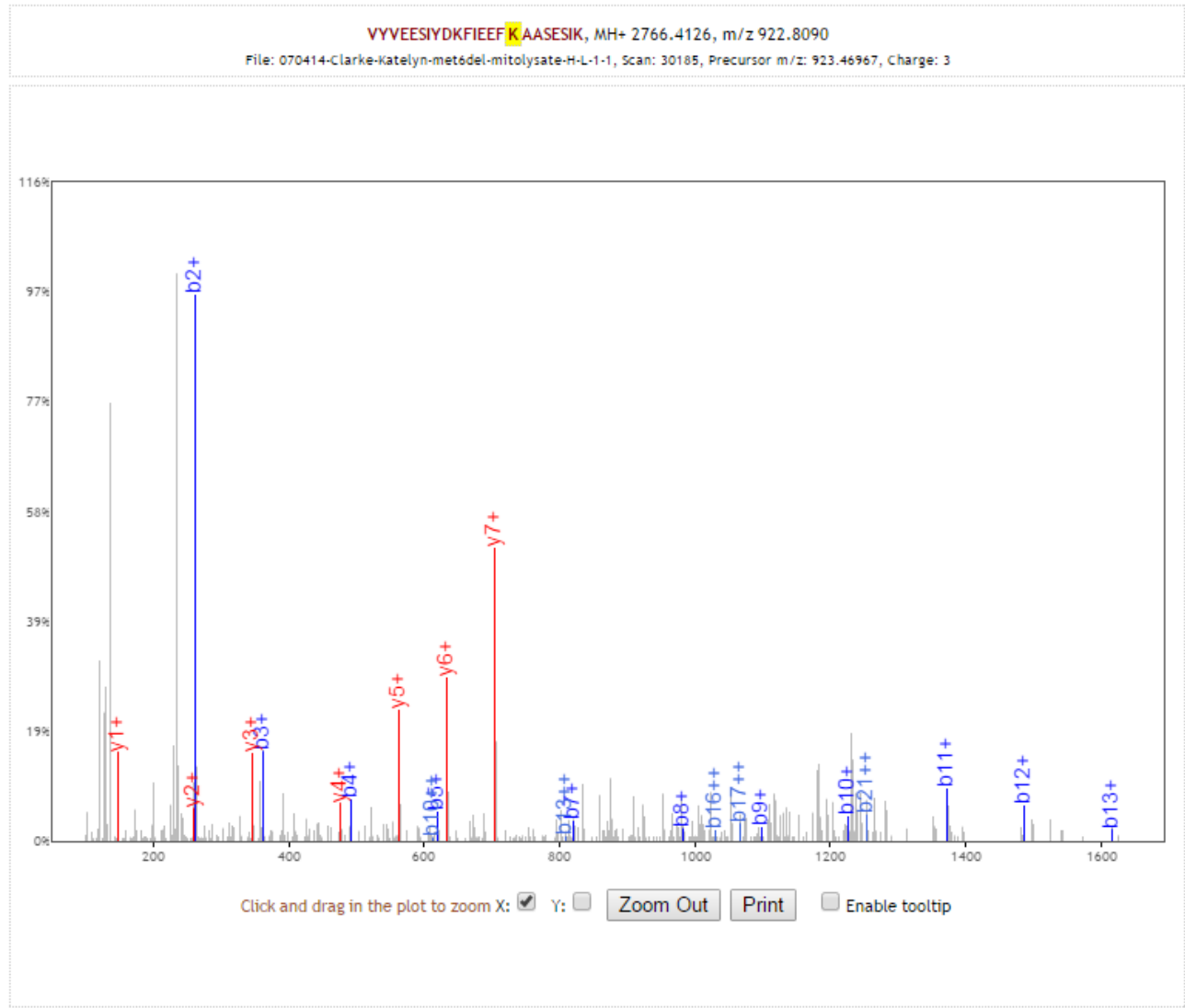
R.VYVEESIYDKFIEEFtri**K**AASESIK.V [329, 351] (missed 2)



Replicate 1

Ald4

R.VYVEESIYDKFIEEFtri**K**AASESIK.V [329, 351] (missed 2)



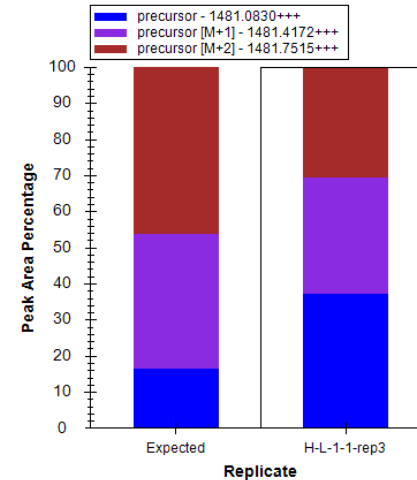
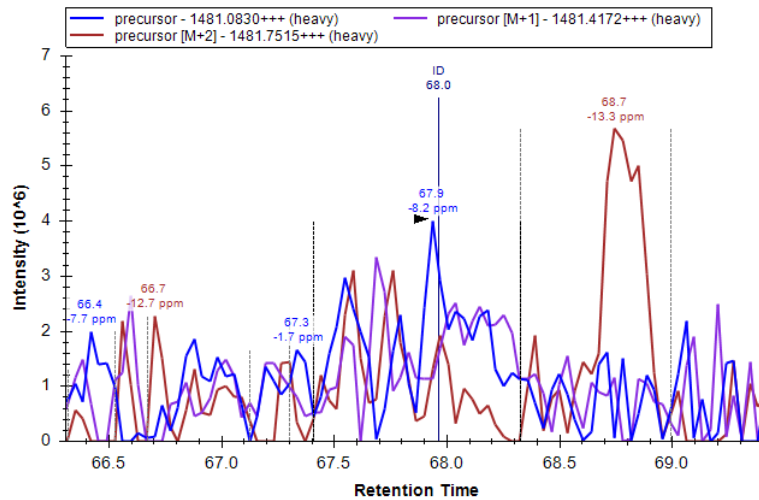
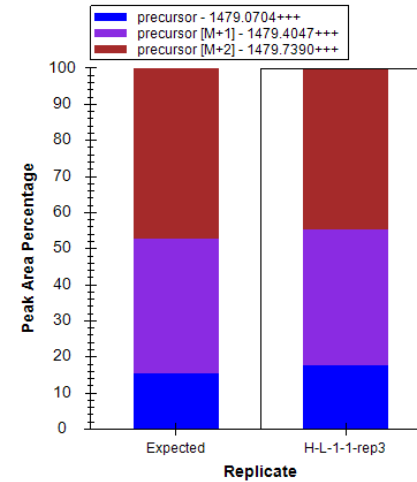
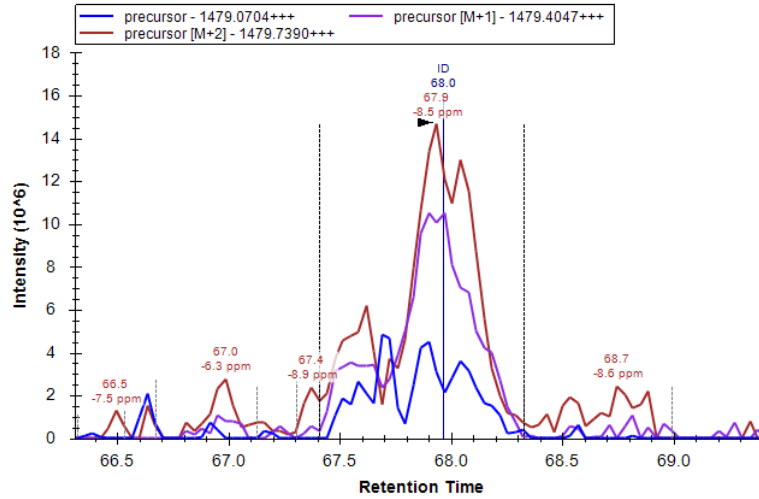
b+	b2+	#	Seq #	y+	y2+
100.0757	50.5415	1	V 23		
263.1390	132.0731	2	Y 22	2667.3441	1334.1757
362.2074	181.6074	3	V 21	2504.2808	1252.6440
491.2500	246.1287	4	E 20	2405.2124	1203.1098
620.2926	310.6499	5	E 19	2276.1698	1138.5885
707.3246	354.1660	6	S 18	2147.1272	1074.0672
820.4087	410.7080	7	I 17	2060.0952	1030.5512
983.4720	492.2397	8	Y 16	1947.0111	974.0092
1098.4990	549.7531	9	D 15	1783.9478	892.4775
1226.5939	613.8006	10	K 14	1668.9208	834.9641
1373.6624	687.3348	11	F 13	1540.8259	770.9166
1486.7464	743.8768	12	I 12	1393.7575	697.3824
1615.7890	808.3981	13	E 11	1280.6734	640.8403
1744.8316	872.9194	14	E 10	1151.6308	576.3190
1891.9000	946.4537	15	F 9	1022.5882	511.7977
2062.0421	1031.5247	16	K 8	875.5198	438.2635
2133.0792	1067.0432	17	A 7	705.3777	353.1925
2204.1163	1102.5618	18	A 6	634.3406	317.6740
2291.1483	1146.0778	19	S 5	563.3035	282.1554
2420.1909	1210.5991	20	E 4	476.2715	238.6394
2507.2230	1254.1151	21	S 3	347.2289	174.1181
2620.3070	1310.6572	22	I 2	260.1969	130.6021
		23	K 1	147.1128	74.0600

[\[Click\]](#) to move table
 Static Modifications:
 C: 57.02146
 Variable Modifications:
 K: 42.0471

Aco1

K.DLLSADKDAEYDEVVEIDLNTLEPYINGPFTPLATPVSDiK.M

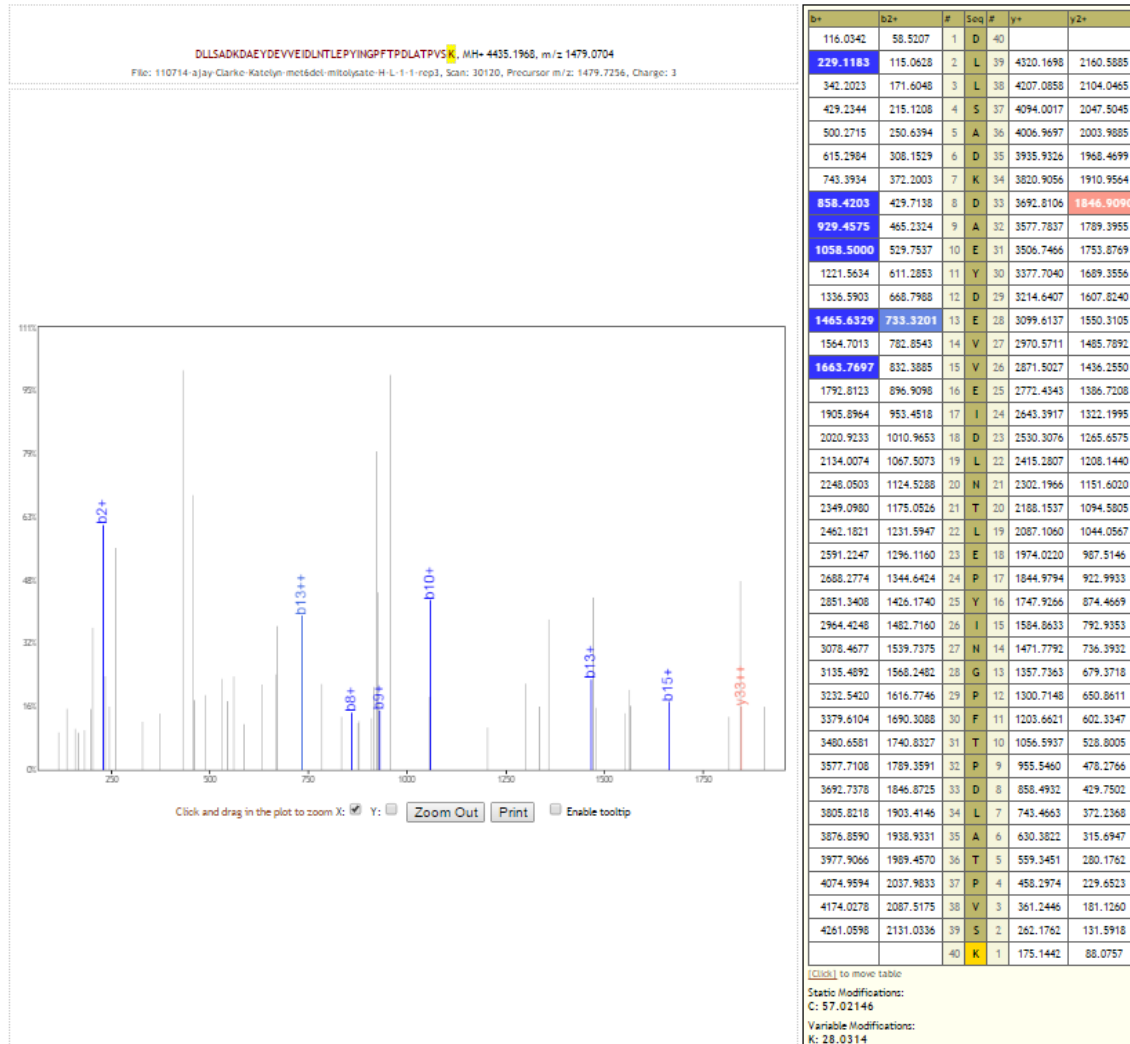
[320, 359] (missed 1)



Replicate 3

Aco1

K.DLLSADKDAEYDEVVEIDLNTLEPYINGPFTPLATPVSDiK.M [320, 359] (missed 1)



Replicate 3